

# Improving the Health of Texans

## Texas House Public Health Committee

3/3/2015

*David Lakey, M.D.*

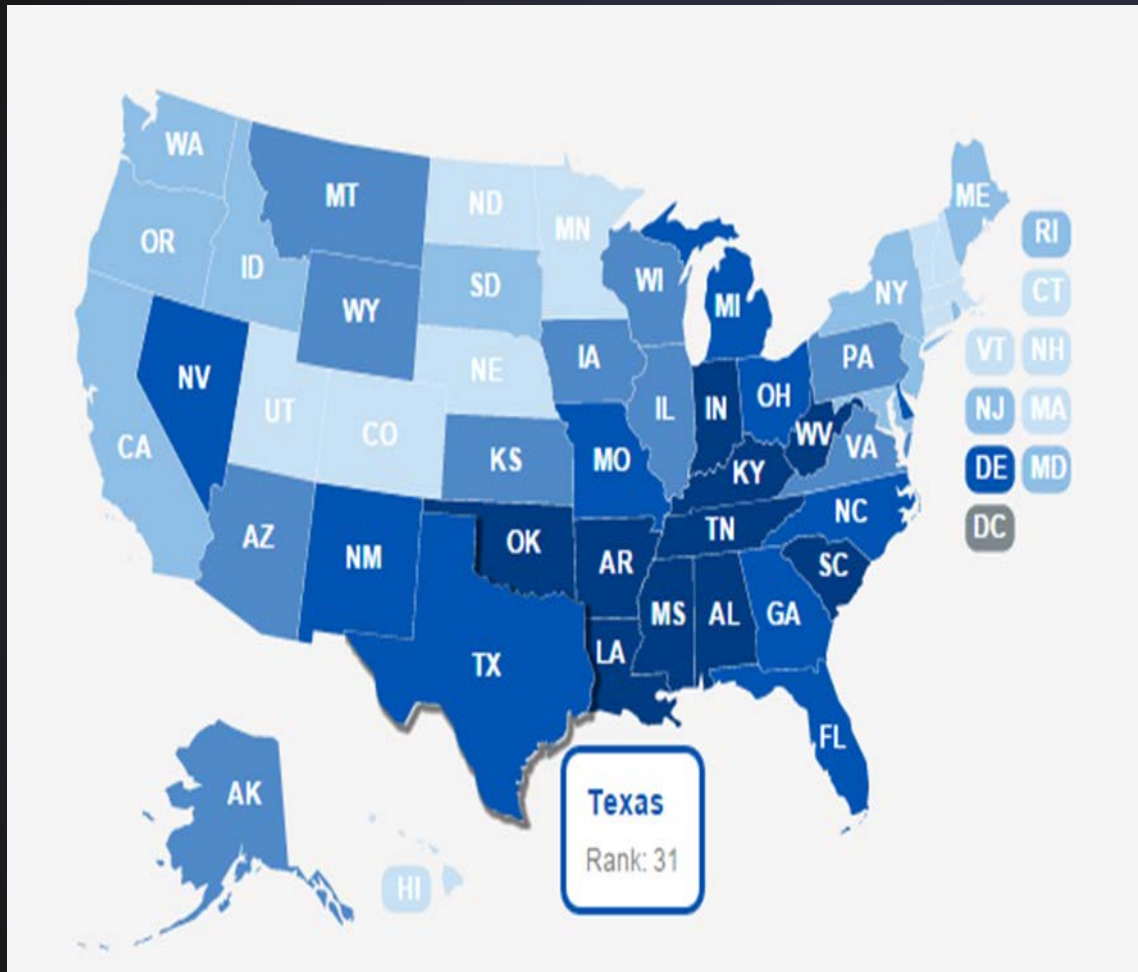
*Associate Vice Chancellor for Population Health  
The University of Texas System*

*Senior Vice President for Population Health  
Isadore Roosth Distinguished Professor  
The University of Texas Health Science Center at Tyler*



THE UNIVERSITY of TEXAS SYSTEM  
*Nine Universities. Six Health Institutions. Unlimited Possibilities.*

# Overall State Health Rankings

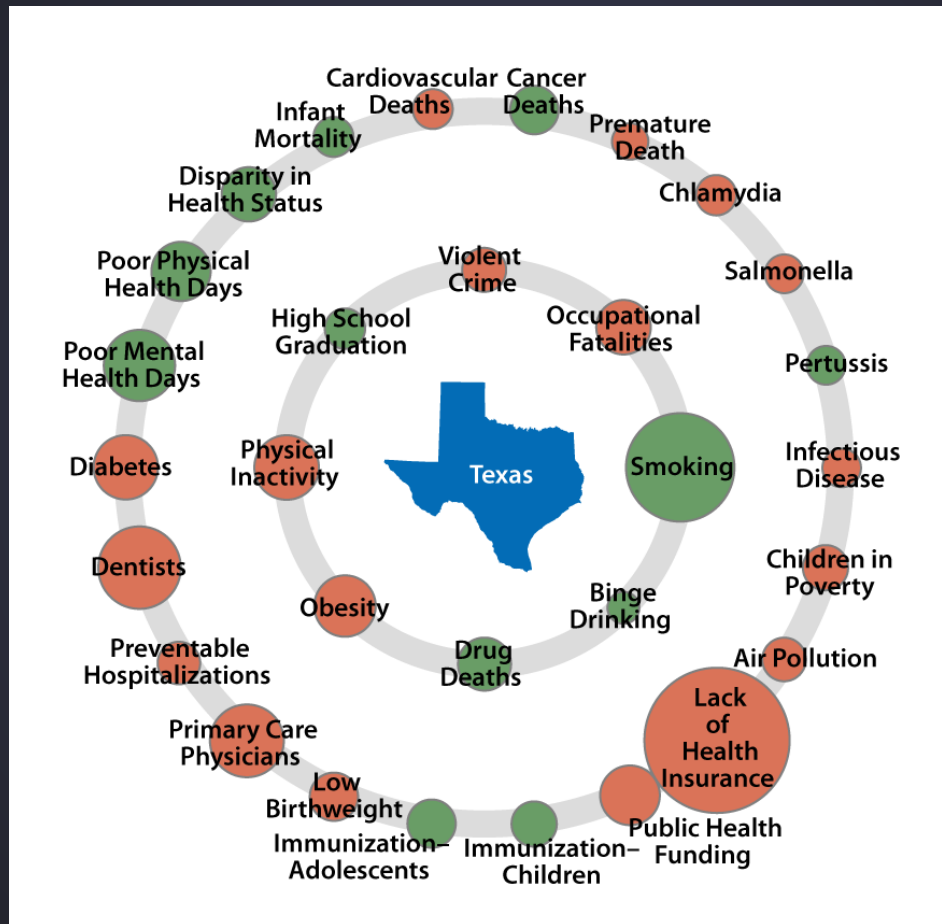


Source: America's Health Rankings, United Health Foundation 2014 Annual Report

# Core Measure Impact

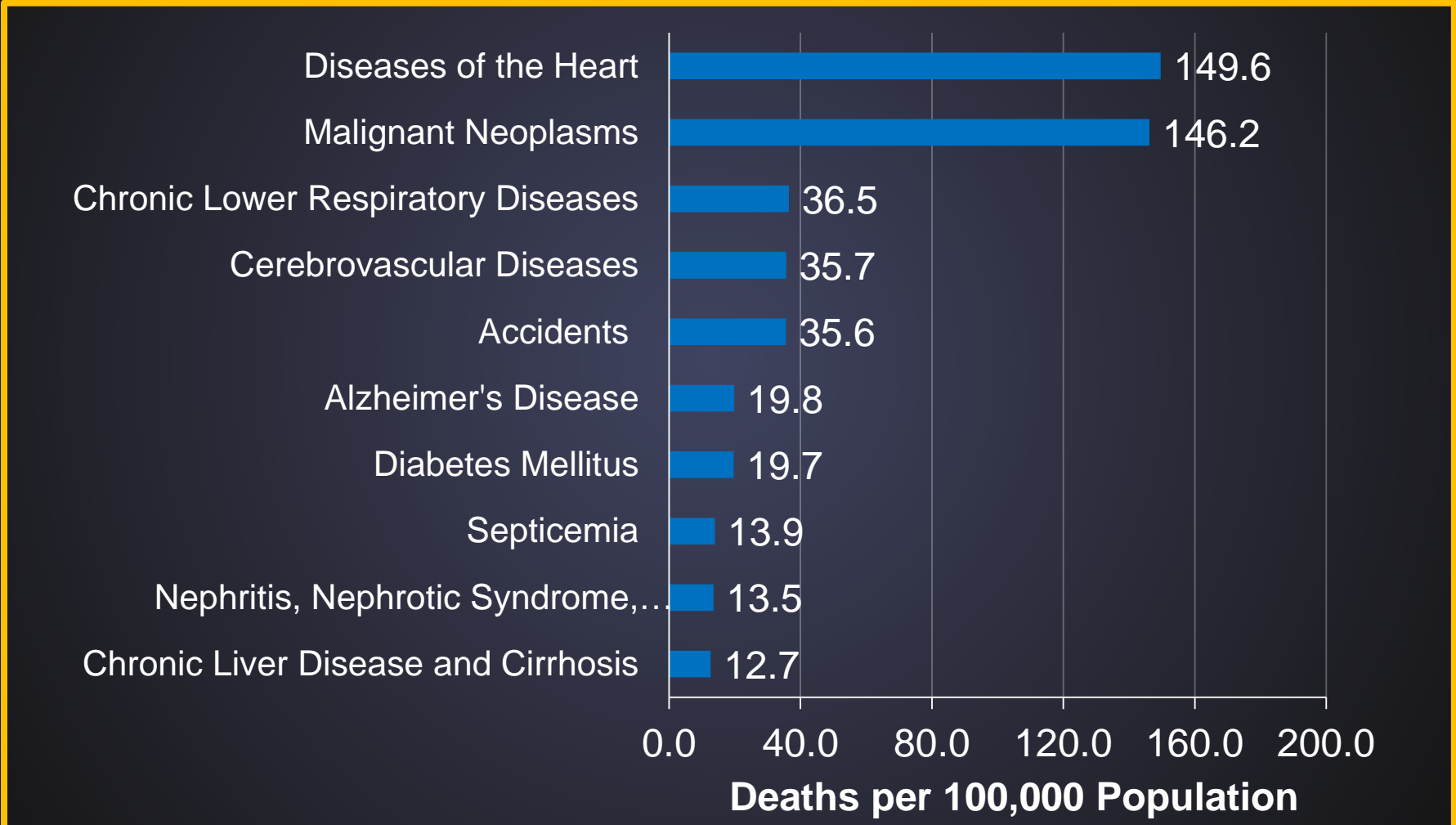
Shows the impacts of core measures on a state's overall ranking

Texas – 2014  
Overall Ranking  
31



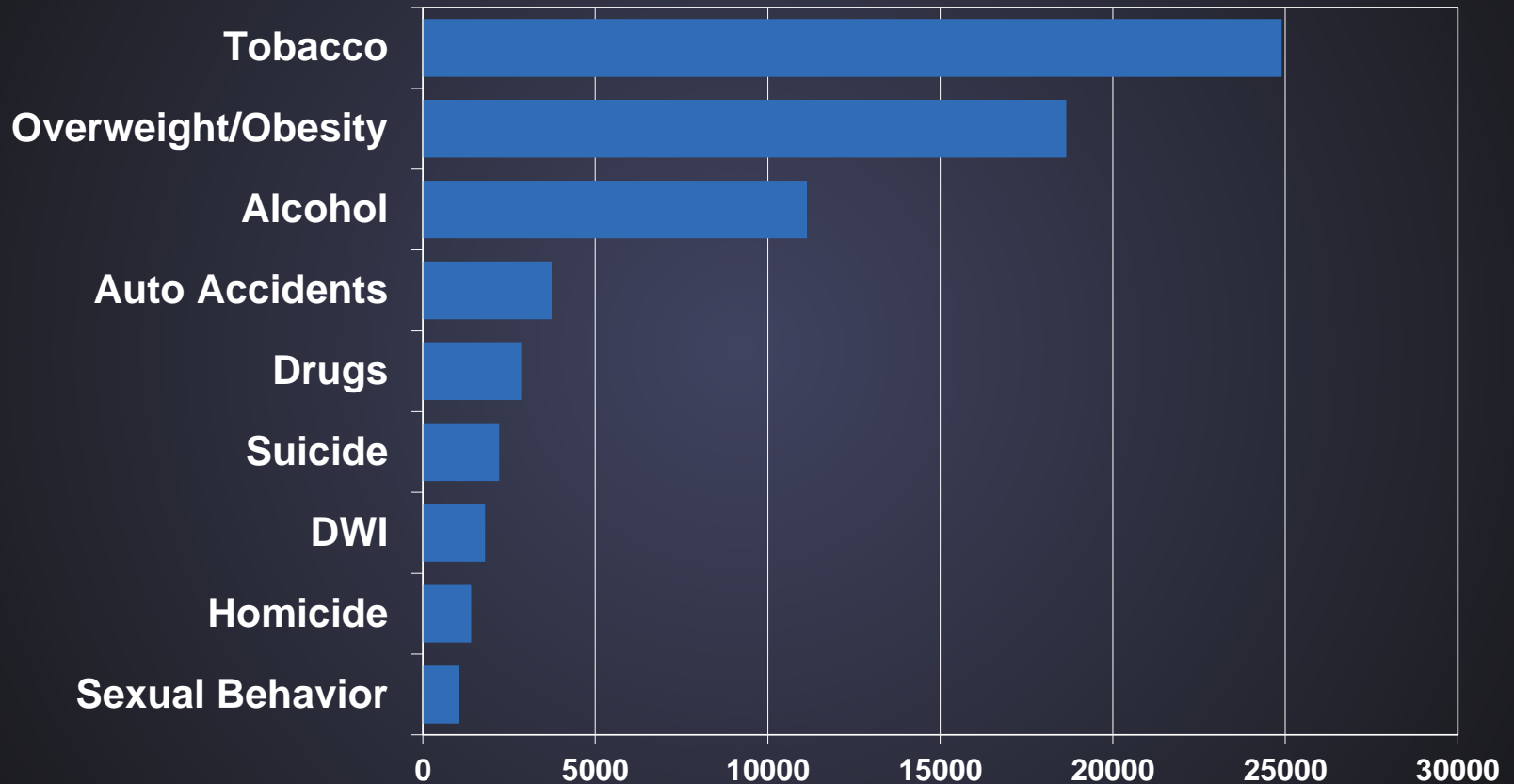
■ Above the national norm  
■ Below the national norm

# Leading Causes of Death-Texas 2012



Data Source: Vital Statistics Unit, Center for Health Statistics, DSHS

# Actual Causes of Death Shaped by Behavior



Source: Chronic Disease in Texas 2007, DSHS

# 5 Leading Causes of Death for Males, number of deaths and rates (numbers per 100,000), Texas 2010

Age Group								
	1-14	15-24	25-34	35-44	45-54	55-64	65-74	75+
1	Accidents (Injuries) 200 (7.3)	Accidents (Injuries) 844 (44.4)	Accidents (Injuries) 904 (49.6)	Accidents (Injuries) 799 (46.4)	Diseases of the Heart 1,916 (112.5)	Malignant Neoplasms (Cancer) 4,264 (339.2)	Malignant Neoplasms (Cancer) 5,340 (77.1)	Diseases of the Heart 9,989 (2,227.1)
2	Malignant Neoplasms (Cancer) 63 (2.3)	Intentional Self-Harm (Suicide) 332 (17.5)	Intentional Self-Harm (Suicide) 357 (20.6)	Diseases of the Heart 579 (33.6)	Malignant Neoplasms (Cancer) 1,879 (110.3)	Diseases of the Heart 3,596 (286.1)	Diseases of the Heart 3,833 (557.8)	Malignant Neoplasms (Cancer) 7,501 (1,672.4)
3	Assault (Homicide) 36 (1.3)	Assault (Homicide) 292 (15.4)	Assault (Homicide) 277 (15.2)	Malignant Neoplasms (Cancer) 420 (24.4)	Accidents (Injuries) 952 (55.9)	Accidents (Injuries) 694 (55.2)	Chronic lower Respiratory Diseases 1,136 (165.3)	Chronic lower Respiratory Diseases 2,549 (568.3)
4	Congenital Malformations 26 (0.9)	Malignant Neoplasms (Cancer) 85 (4.5)	Diseases of the Heart 181 (9.9)	Intentional Self-Harm (Suicide) 404 (23.4)	Chronic liver Disease & Cirrhosis 574 (33.7)	Chronic liver Disease & Cirrhosis 661 (52.6)	Cerebrovascular Disease (Stroke) 729 (106.1)	Cerebrovascular Disease (Stroke) 2,127 (474.2)
5	Diseases of the Heart 17 (0.6)	Diseases of the Heart 52 (2.7)	Malignant Neoplasms (Cancer) 144 (7.9)	HIV 162 (9.4)	Intentional Self-Harm (Suicide) 491 (28.8)	Diabetes Mellitus 569 (45.3)	Diabetes Mellitus 588 (85.6)	Alzheimer's Disease 1,445 (322.2)

# Annual potentially preventable deaths based on average death rates for the three states with the lowest rates for each cause

Centers for Disease Control and Prevention

**MMWR**

Morbidity and Mortality Weekly Report

Weekly / Vol. 63 / No. 17

May 2, 2014

## Potentially Preventable Deaths from the Five Leading Causes of Death — United States, 2008–2010

Paula W. Yoon, ScD<sup>1</sup>, Brigham Bastian<sup>2</sup>, Robert N. Anderson, PhD<sup>2</sup>, Janet L. Collins, PhD<sup>3</sup>, Harold W. Jaffe, MD<sup>4</sup>  
(Author affiliations at end of text)

# Potentially Preventable Deaths in Texas

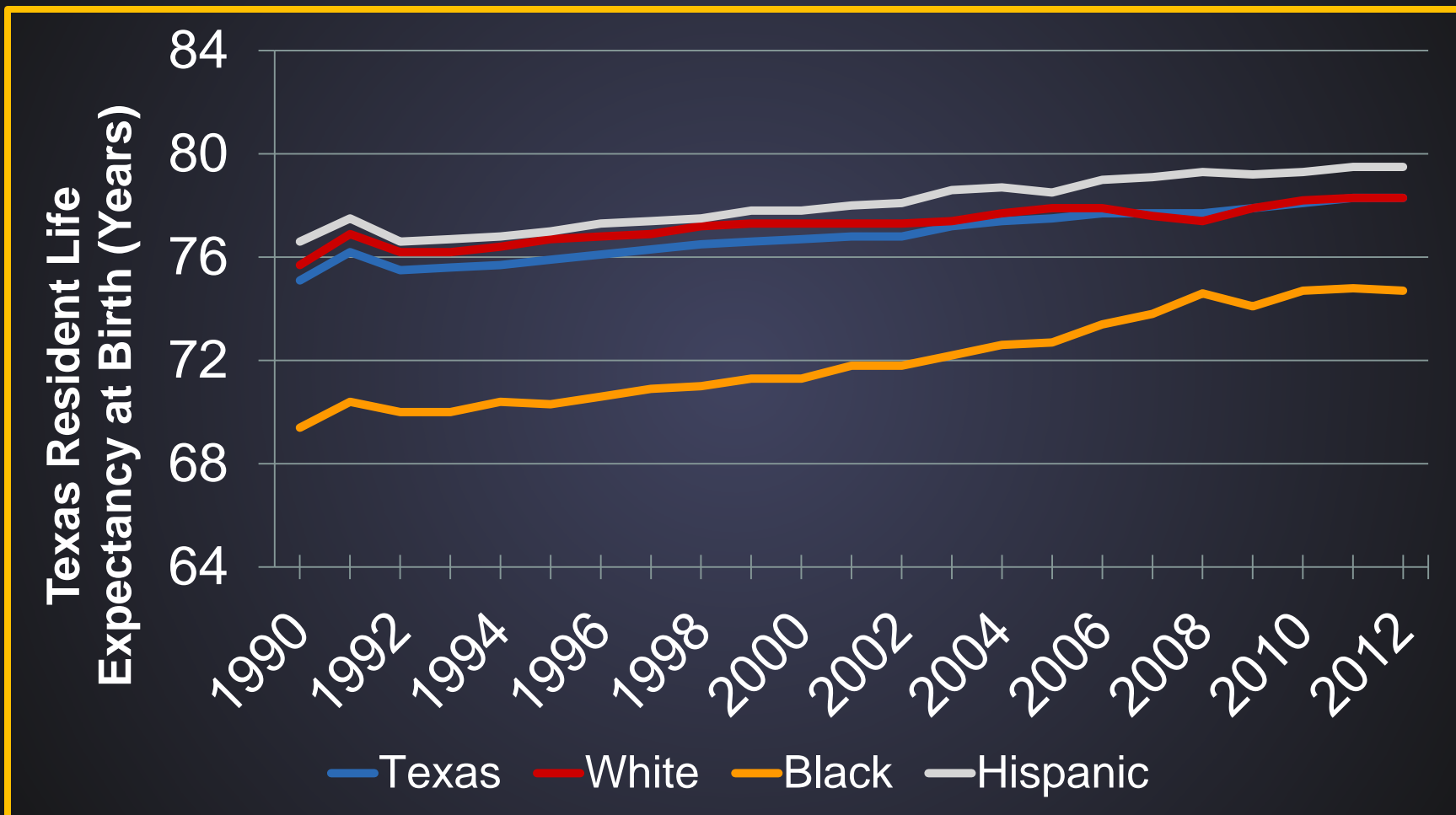
	Observed	Expected	Potentially Preventable	Percent Preventable Texas	Percent Preventable United States
Heart Disease	19,939	12,683	7,256	36%	34%
Cancer	27,141	22,143	4,998	18%	21%
Chronic Lower Respiratory Disease	5,061	3,139	1,922	38%	39%
CVD/ Stroke	4,254	2,471	1,783	42%	33%
Unintentional Injury	7,612	4,551	3,061	40%	39%



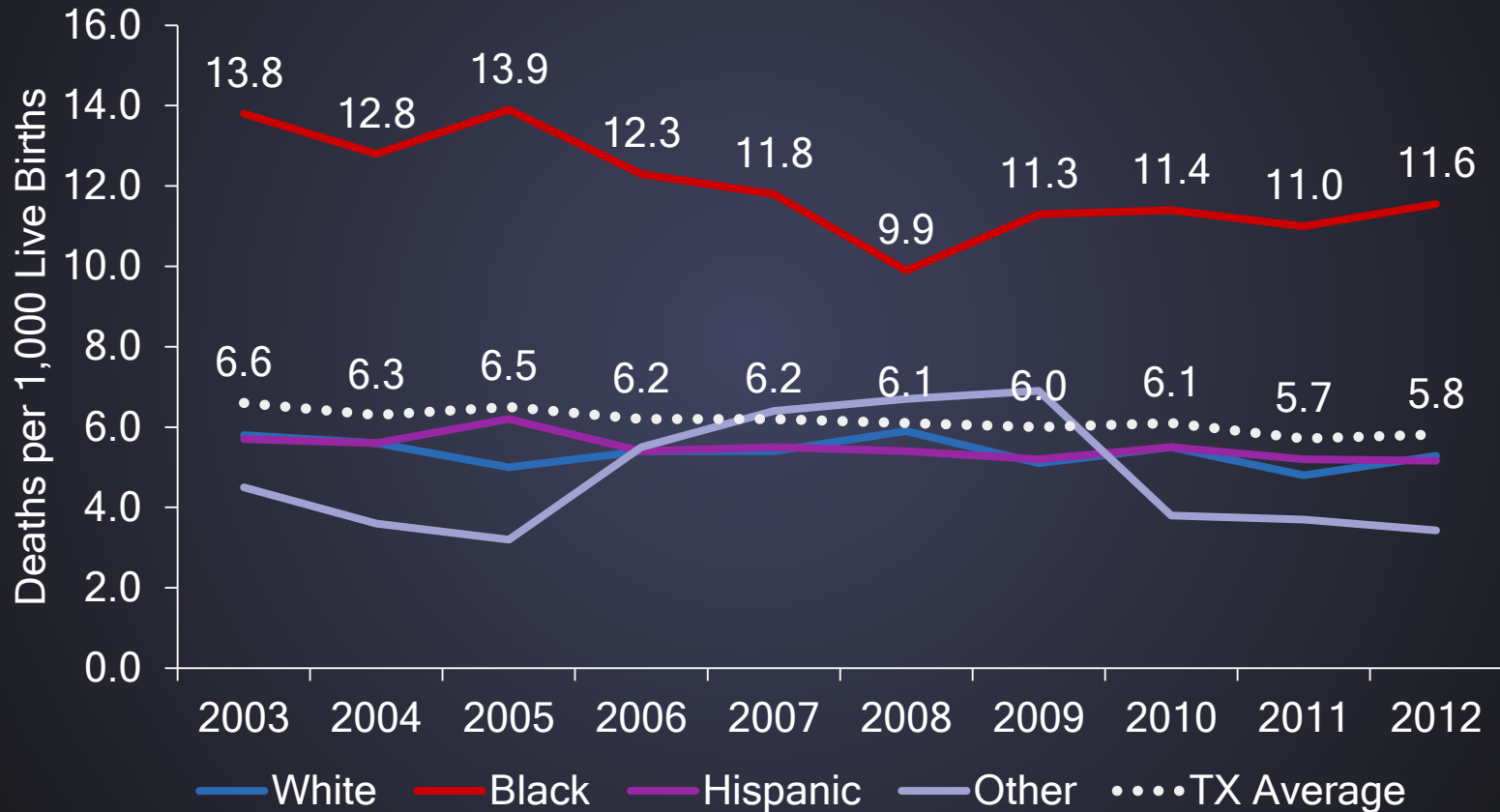
# Health Disparities

- Racial and Ethnic
- Geographic
- Educational and Income

# Life Expectancy in Texas by Race and Ethnicity



# Infant Mortality Rate by Race / Ethnicity (2003–2012)

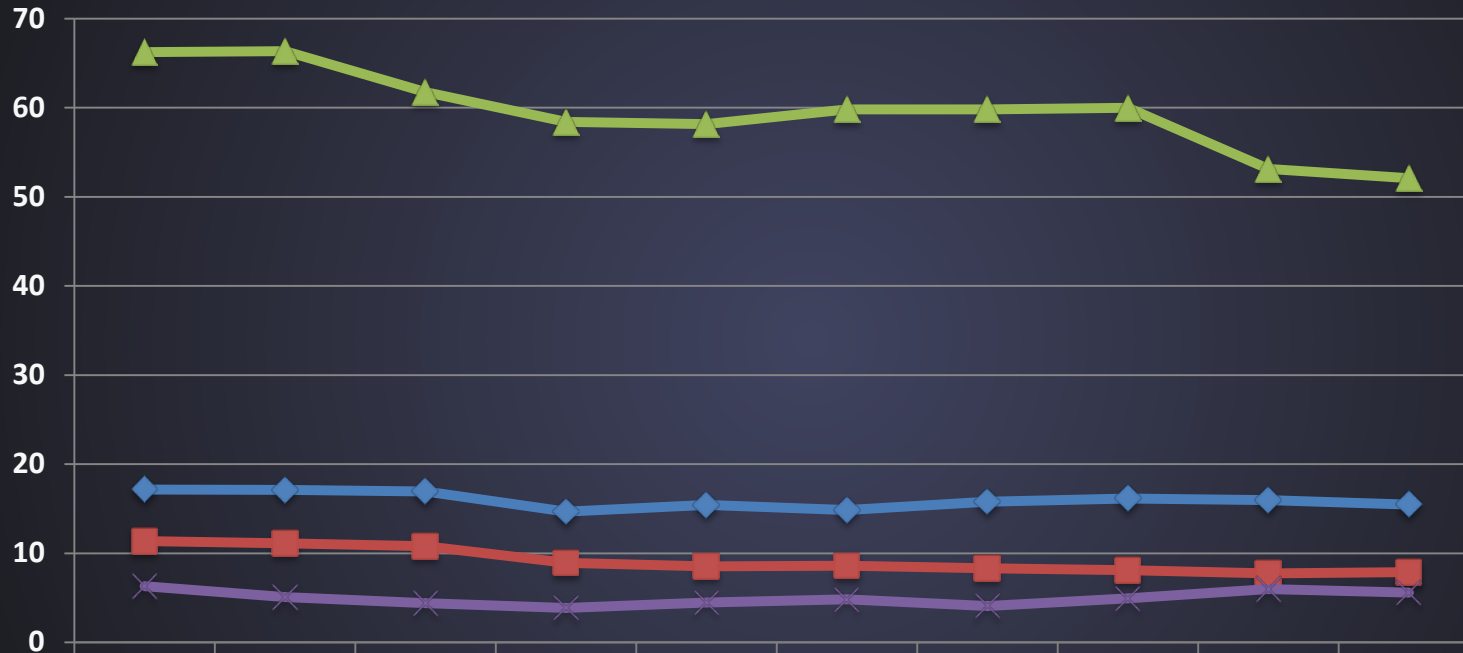


Source: Texas data from Death Vital Records, DSHS, Center for Health Statistics; Prepared by FCHS, Office of Program Decisions Support

# Texas HIV Rates by Race and Year of Diagnosis

## 2003-2012

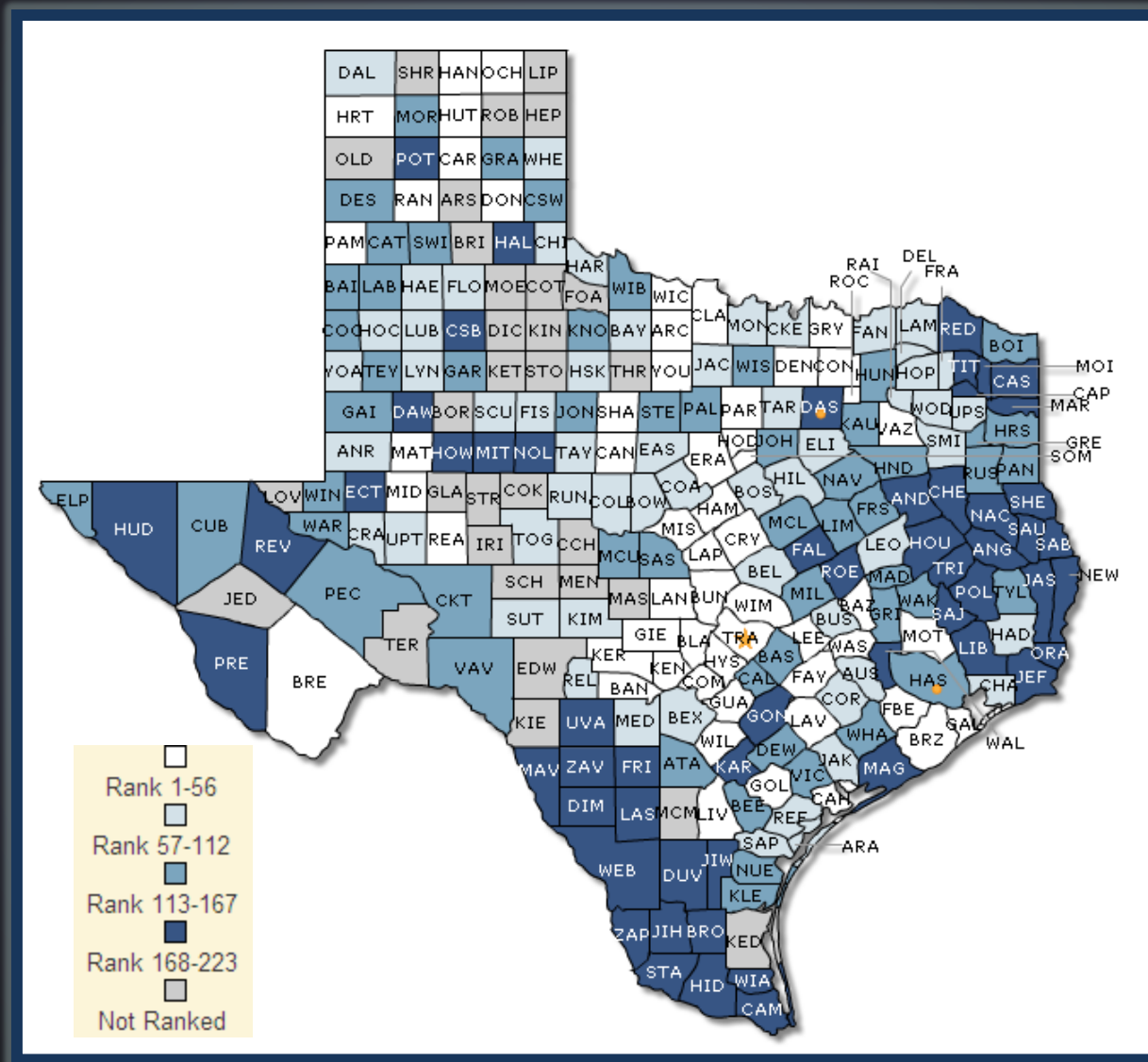
Cases per 100,000



	2003	2004	2005	2006	2007	2008	2009	2010	2011	2012
White	11.4	11.1	10.8	8.9	8.5	8.6	8.3	8.1	7.8	7.9
Black	66.2	66.4	61.8	58.4	58.2	59.8	59.8	60.0	53.1	52.1
Hispanic	17.1	17.1	16.9	14.7	15.4	14.8	15.8	16.1	16.0	15.5
Other	6.3	5.1	4.4	3.9	4.5	4.8	4.1	4.9	6.0	5.6

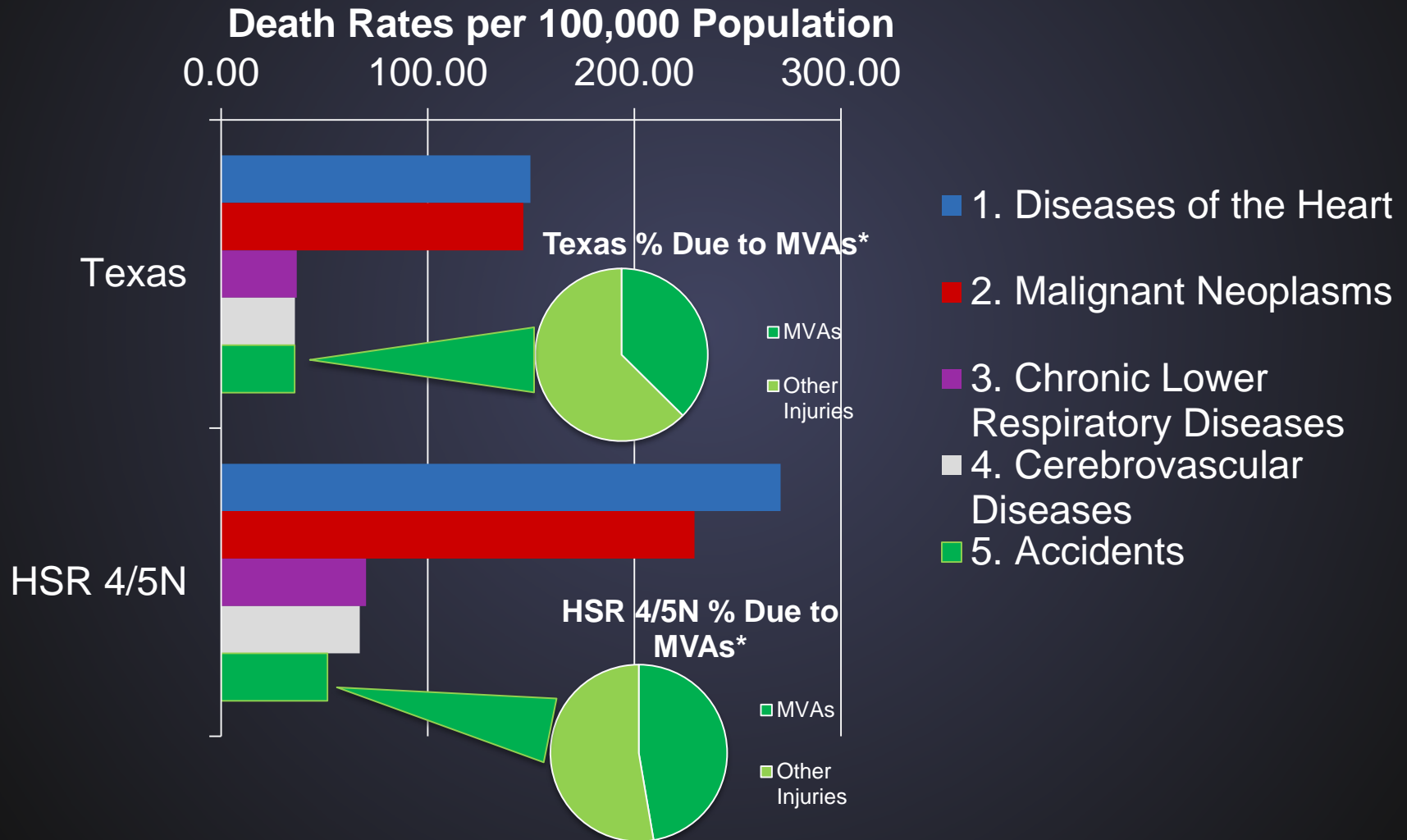
Year

# Texas County Health Rankings





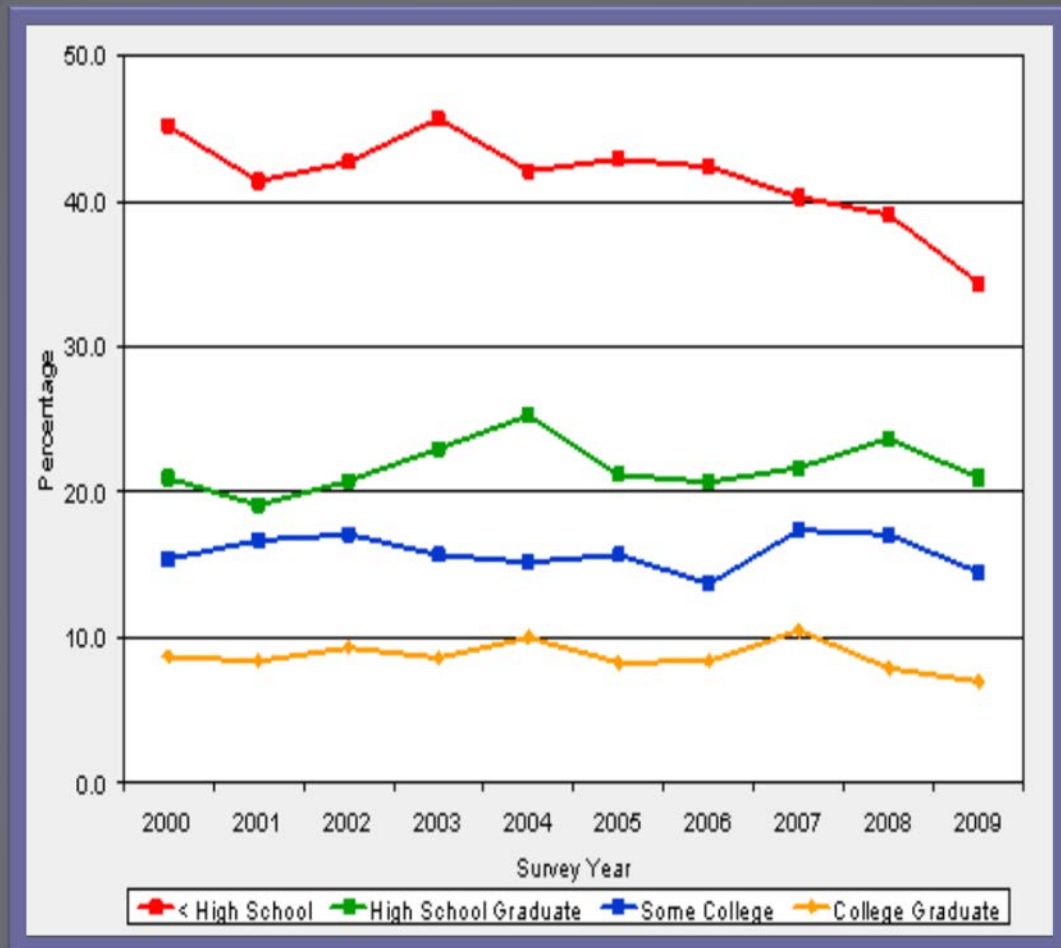
# 2012 Leading Causes of Death, All Ages



\*MVs = Motor Vehicle Accidents

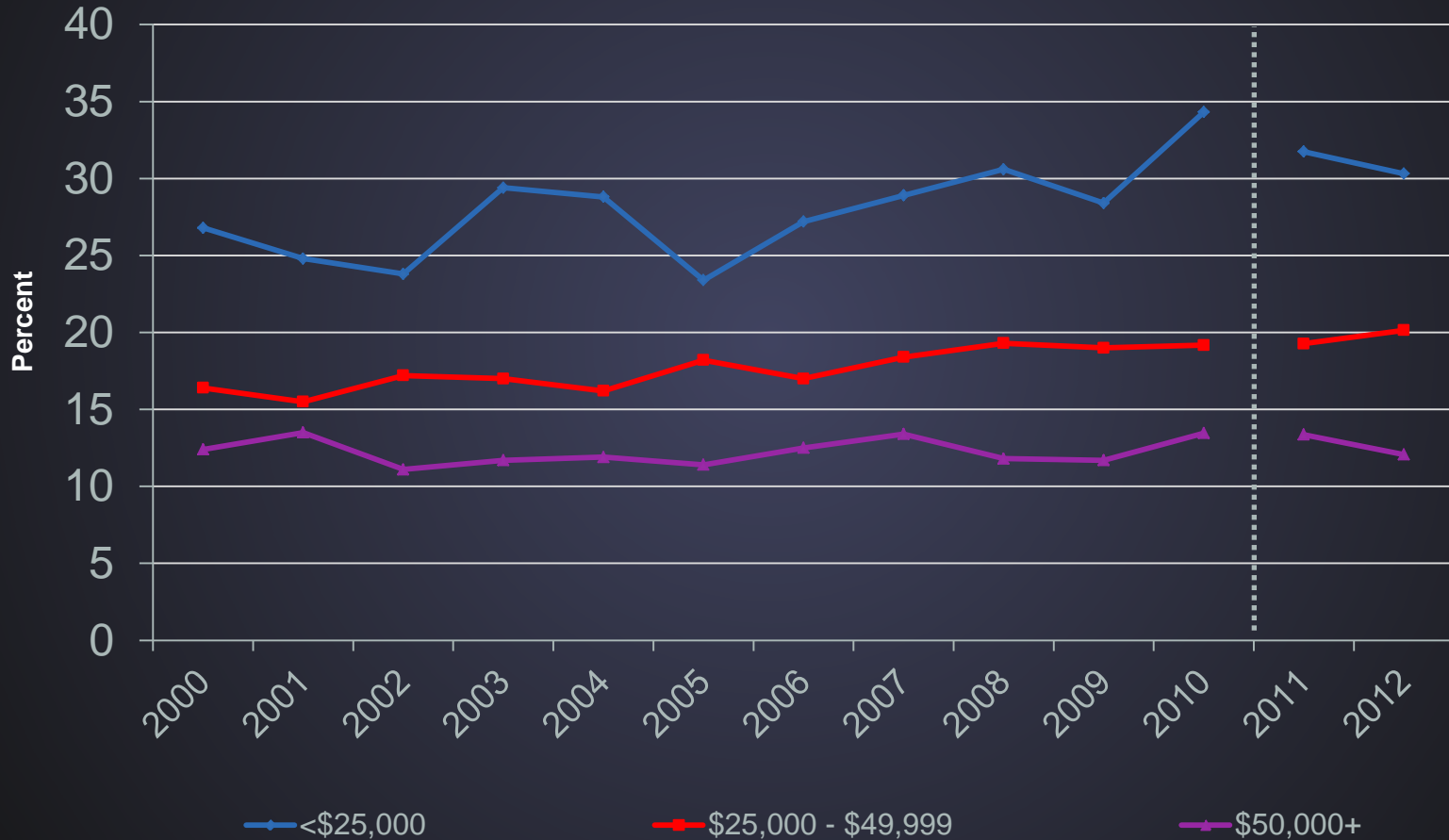
# General Health “Fair to Poor” in Texas by Education

2000 – 2009  
Behavioral Risk  
Factor  
Surveillance  
System





# Physical Health Not Good 5+ Days in Texas by Income Level

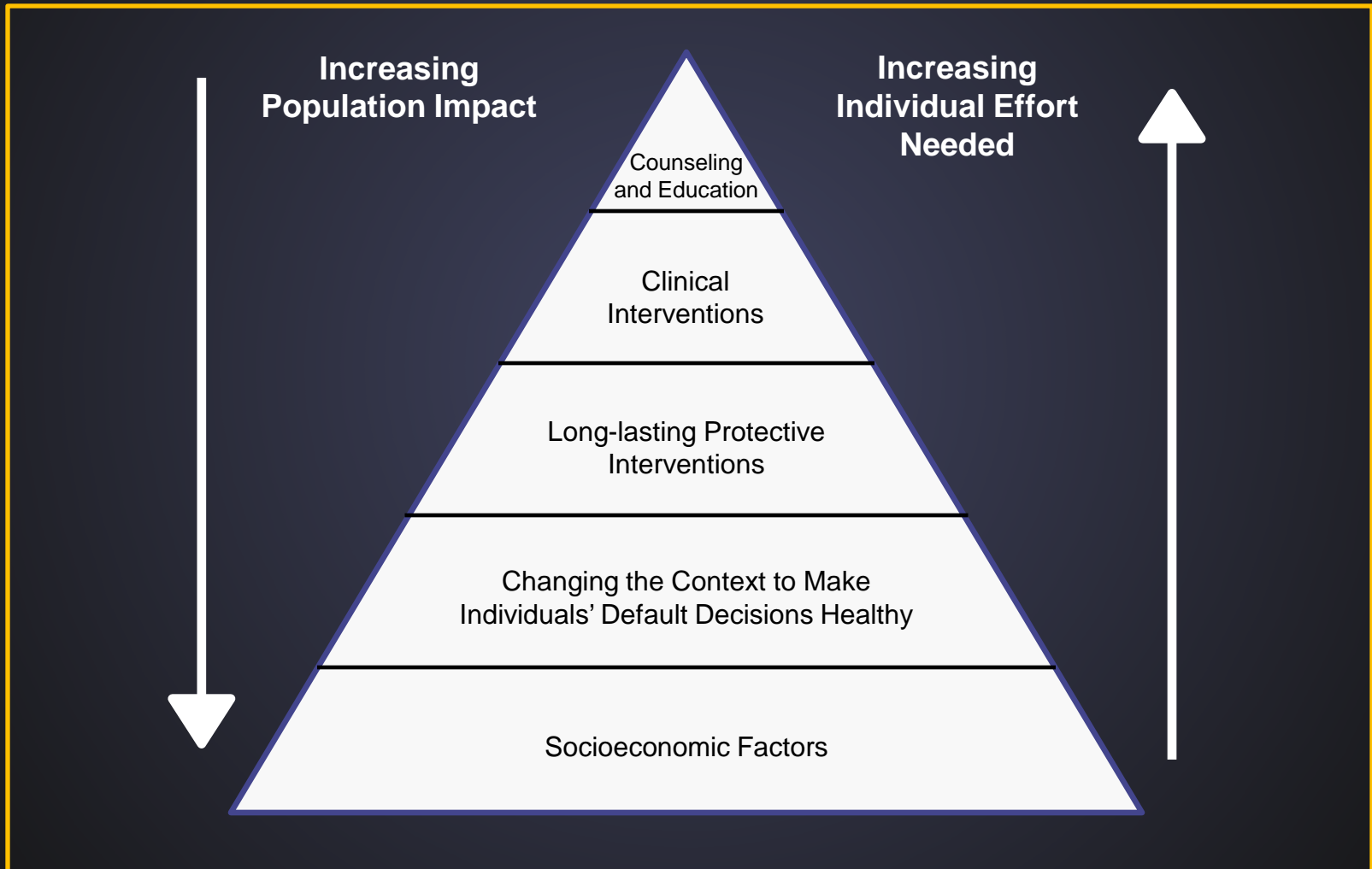


# Public Health Priority Issues for Texas

- **Prematurity / Infant Mortality**
- **Chronic Diseases**
  - **Obesity and Diabetes**
  - **Heart Disease**
- **Infectious Diseases**
  - **Vaccine Preventable Diseases**
  - **Emerging Infectious Diseases**
  - **HIV**
- **Women's health**
- **Cancer Prevention**
- **Mental Health**
- **Substance Abuse**
- **Trauma/ Accidents**
- **Healthcare Quality and Access**
- **Disparities**

# The Health Impact Pyramid

## A Framework for Public Health Action



# Partnerships to Improve Health





# The Health Status of Texas 2014



October 2014



- Home
- Categorized Indicators
- Alphabetical Indicators
- Maps
- Definitions
- Resources And Help
- About...

## Texas Health Indicators

Use the links at the top of the page or any of the three options below to navigate the content of this site.

**Categorized Indicators**

- Trend Charts
- Tables
- Maps

**Alphabetical Indicators**

- Trend Charts
- Tables
- Maps

**Maps**

- County Maps
- Public Health Region Maps

**Hot Topics**

- [Obesity \(Adults\)](#)
- [Suicide Deaths](#)
- [Heart Disease Deaths](#)
- [Infant Deaths](#)
- [Obesity \(Youth\)](#)

### Survey

Please take the time to fill out our [survey](#) so that we can better serve your needs.



**Improving the Health of Texans**

**Thank You!**