

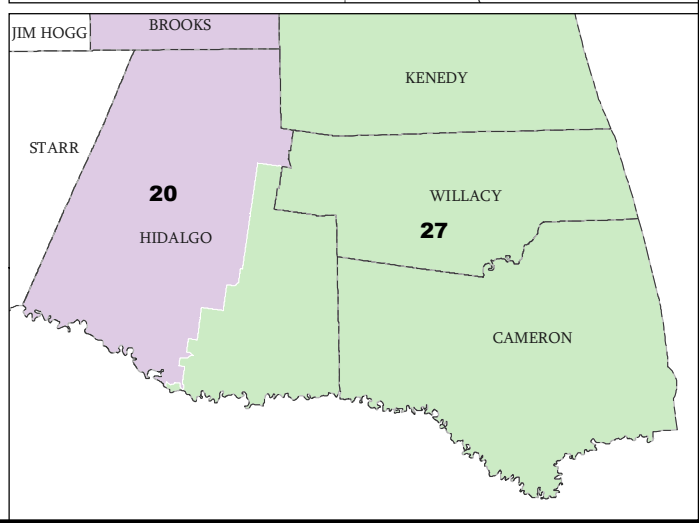
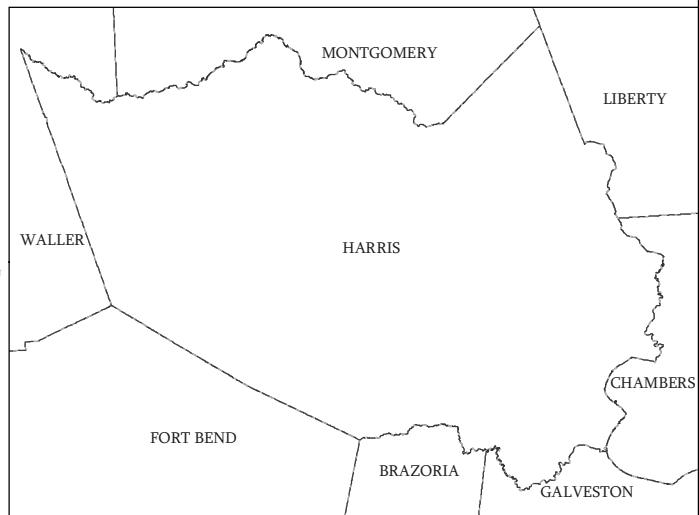
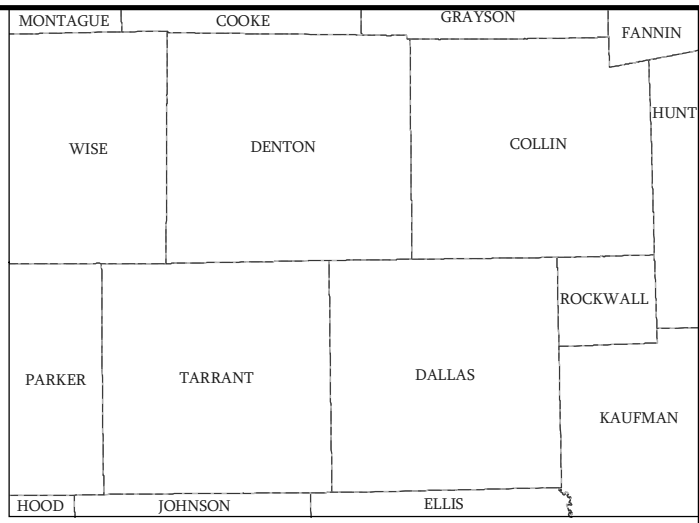
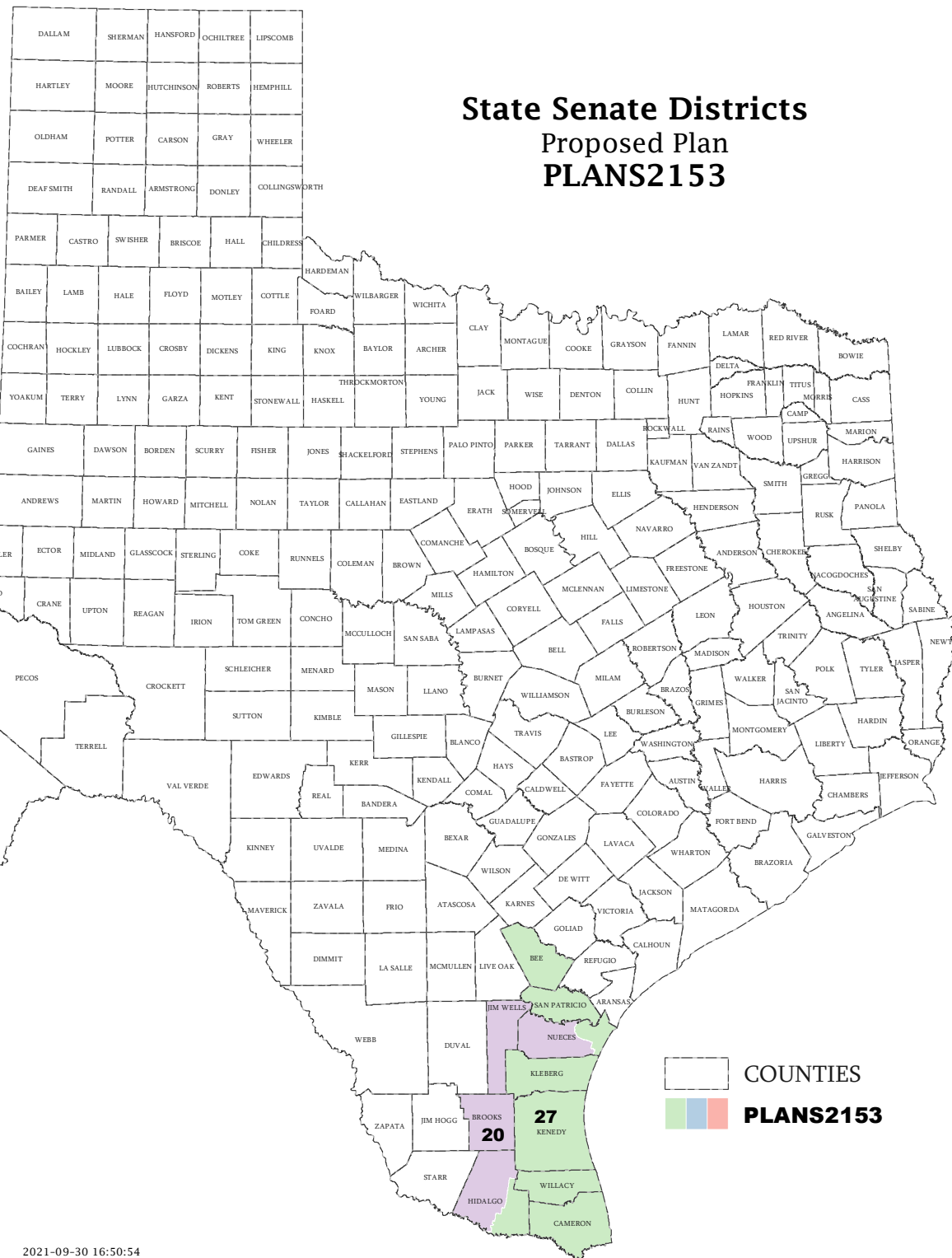
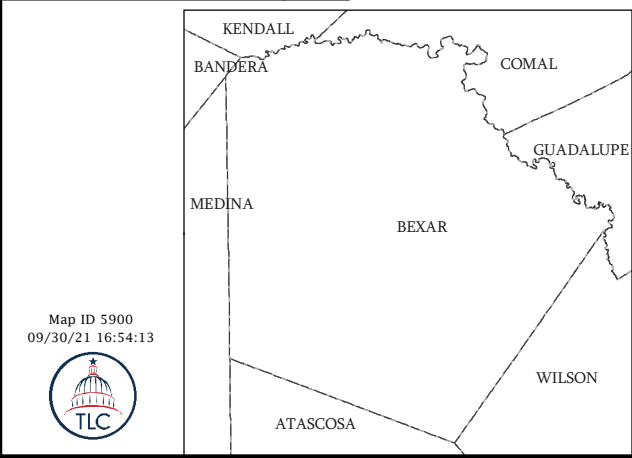
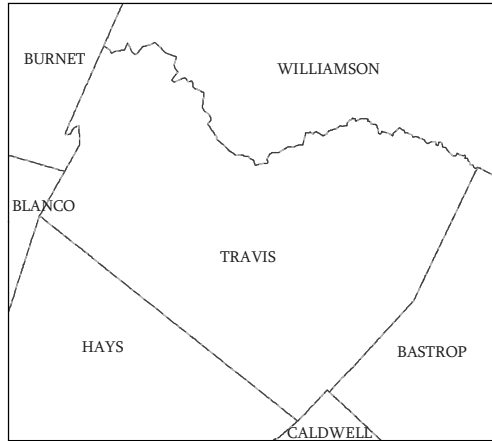
FLOOR AMENDMENT NO. \_\_\_\_\_

BY: \_\_\_\_\_

PLAN NUMBER: PLANS2153  
DISTRICTS AMENDED: 20 and 27  
REGIONS AFFECTED: SOUTH TEXAS

- 1 Amend C.S.S.B. No. 4 (PLANS2130) by striking Districts 20 and
- 2 27 as established by PLANS2130 and substituting Districts 20 and 27
- 3 as established by PLANS2153.

# State Senate Districts Proposed Plan PLANS2153

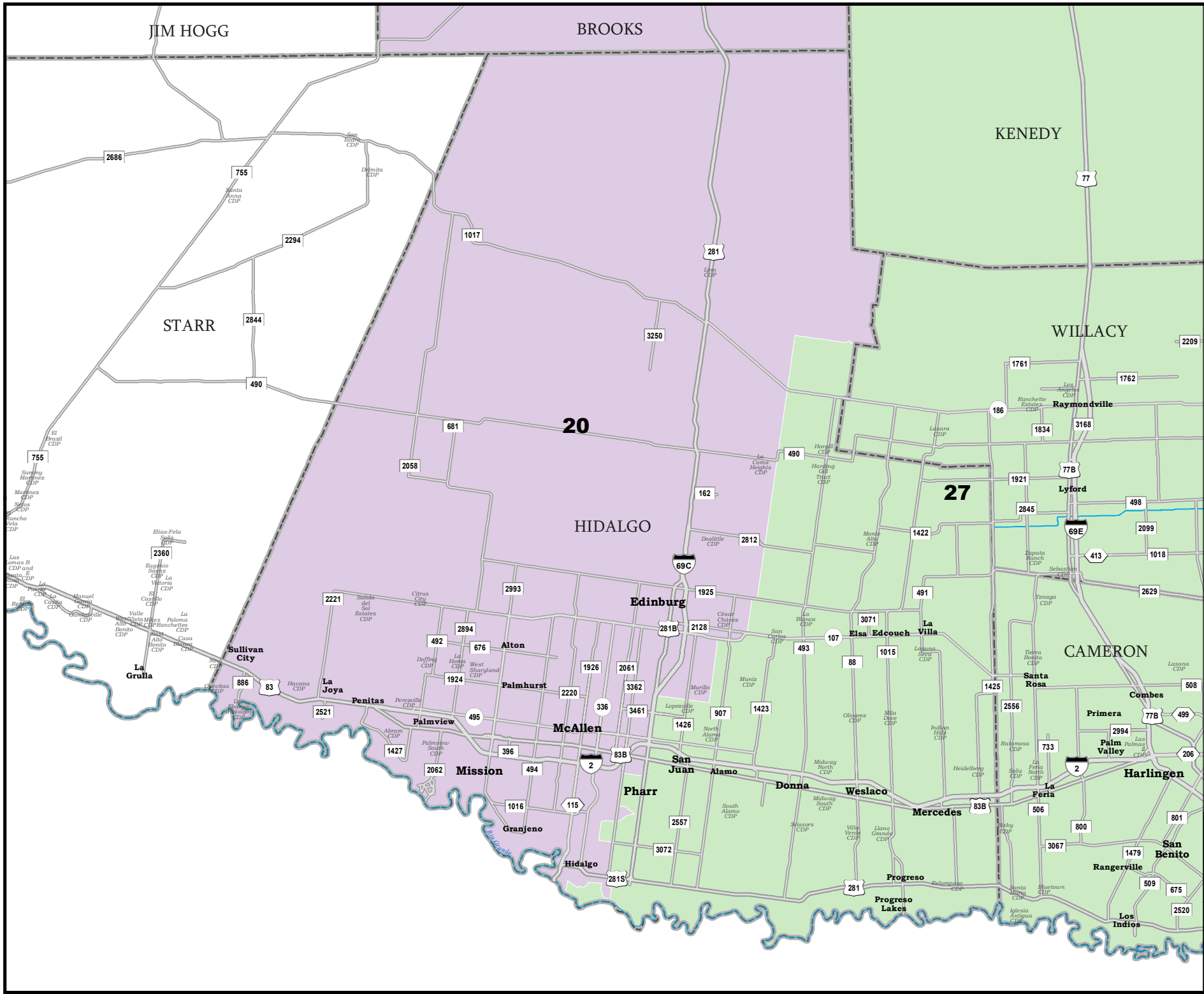


COUNTIES  
   **PLANS2153**

Map ID 5900  
09/30/21 16:54:13



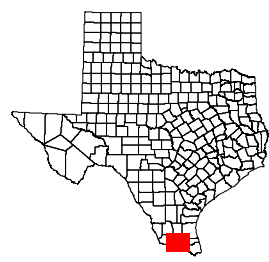
48577  
2020 Census  
PLANS2153 2021-09-30 16:50:54

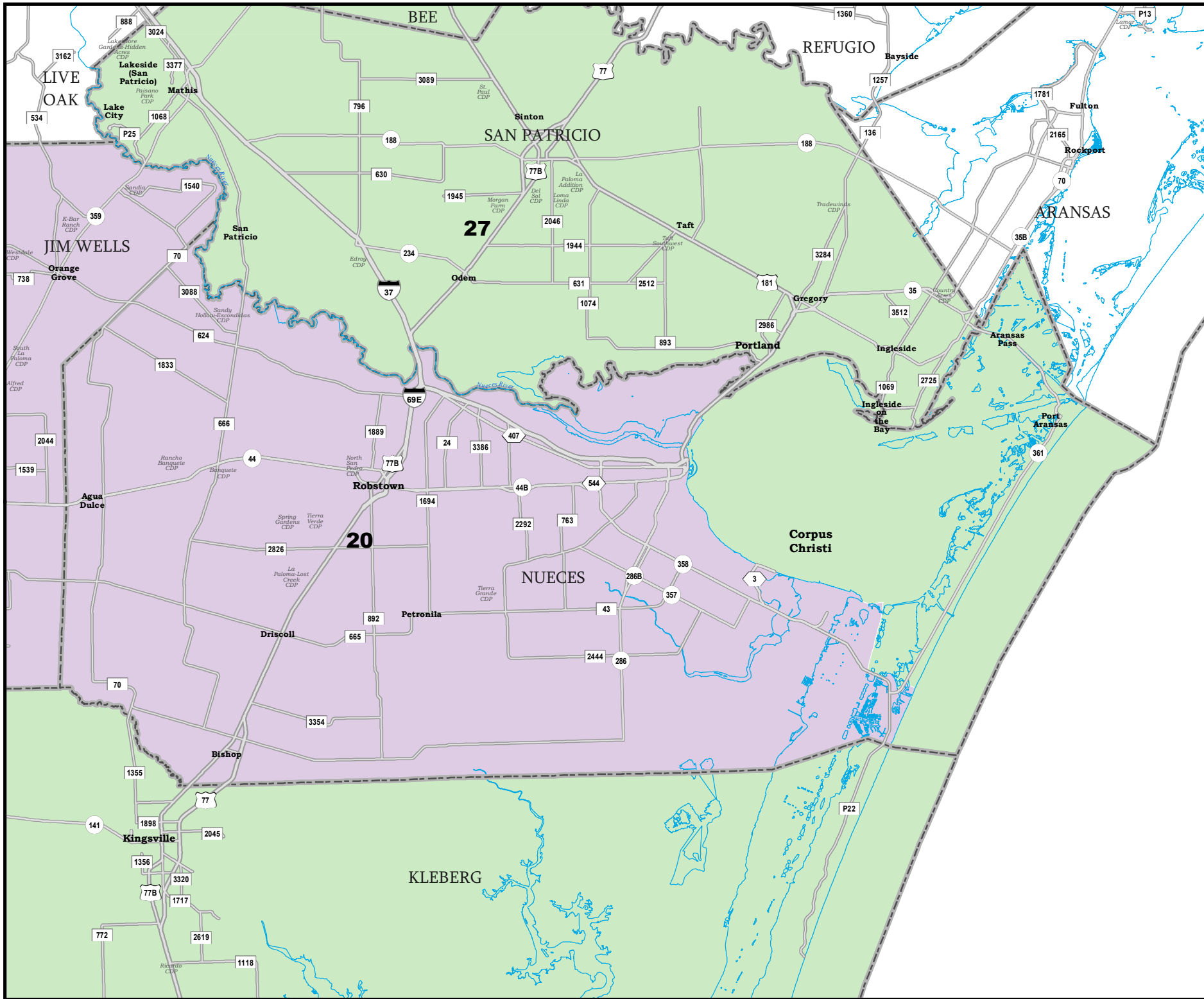


# HIDALGO COUNTY

## State Senate Districts Proposed Plan PLANS2153

 COUNTIES  
 **PLANS2153**

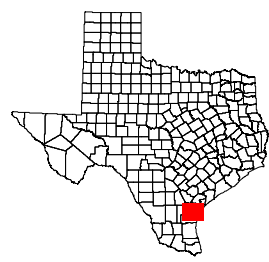




# NUECES COUNTY

## State Senate Districts Proposed Plan PLANS2153

 COUNTIES  
 **PLANS2153**



## District Population Analysis with County Subtotals

### SENATE DISTRICTS - PLANS2153

Total State Population	29,145,505
Total Districts Required	31
Ideal District Population	940,178
Unassigned Population	27,303,206
Districts in Plan	2
Unassigned Geography	Yes
Districts Contiguous	Yes

	<b>Population</b>	<b>-----Deviation-----</b>	
		<b>Total</b>	<b>Percent</b>
Plan Overall Range		2,427	0.26%
Smallest District (27)	919,936	-20,242	-2.15%
Largest District (20)	922,363	-17,815	-1.89%
Average (mean)	921,150	19,029	2.02%

PLANS2153

## District Population Analysis with County Subtotals

### SENATE DISTRICTS - PLANS2153

	Deviation		Total	Anglo	Non-Anglo	Asian	Black	Hispanic	B+H	%Anglo	%Non-Anglo	%Asian	%Black	%Hispanic	%B+H
<b>DISTRICT 20</b>	-17,815	Total:	922,363	147,057	775,306	20,095	23,577	730,013	748,025	15.9	84.1	2.2	2.6	79.1	81.1
	-1.89 %	VAP:	674,398	122,972	551,426	14,976	16,583	516,191	530,221	18.2	81.8	2.2	2.5	76.5	78.6
Brooks (100%)			7,076	724	6,352	48	47	6,242	6,271	10.2	89.8	0.7	0.7	88.2	88.6
Hidalgo (60%)			526,367	35,911	490,456	9,266	5,454	476,121	479,441	6.8	93.2	1.8	1.0	90.5	91.1
Jim Wells (100%)			38,891	6,963	31,928	216	414	30,835	31,082	17.9	82.1	0.6	1.1	79.3	79.9
Nueces (99%)			350,029	103,459	246,570	10,565	17,662	216,815	231,231	29.6	70.4	3.0	5.0	61.9	66.1
<b>DISTRICT 27</b>	-20,242	Total:	919,936	101,059	818,877	7,906	11,289	798,201	805,821	11.0	89.0	0.9	1.2	86.8	87.6
	-2.15 %	VAP:	654,991	85,438	569,553	5,986	7,900	553,372	559,537	13.0	87.0	0.9	1.2	84.5	85.4
Bee (100%)			31,047	8,600	22,447	307	2,558	19,392	21,804	27.7	72.3	1.0	8.2	62.5	70.2
Cameron (100%)			421,017	37,107	383,910	3,637	3,410	376,680	378,477	8.8	91.2	0.9	0.8	89.5	89.9
Hidalgo (40%)			344,414	17,427	326,987	1,430	1,648	323,880	324,456	5.1	94.9	0.4	0.5	94.0	94.2
Kenedy (100%)			350	73	277	10	12	261	264	20.9	79.1	2.9	3.4	74.6	75.4
Kleberg (100%)			31,040	6,728	24,312	973	1,361	21,920	23,006	21.7	78.3	3.1	4.4	70.6	74.1
Nueces (1%)			3,149	2,706	443	60	17	237	249	85.9	14.1	1.9	0.5	7.5	7.9
San Patricio (100%)			68,755	26,613	42,142	1,278	1,725	38,220	39,491	38.7	61.3	1.9	2.5	55.6	57.4
Willacy (100%)			20,164	1,805	18,359	211	558	17,611	18,074	9.0	91.0	1.0	2.8	87.3	89.6

**Population and Voter Data  
 with Voter Registration Comparison  
 SENATE DISTRICTS - PLANS2153**

District	Deviation		Population								Total Voter Registration			Non-Suspense Voter Registration			
			Total	%Anglo	%Non-Anglo	%Asian	%Black	%Hispanic	%B+H	General Election	Turnout	Total	SSVR	TO/VR	Total	SSVR	TO/VR
20	-17,815	Total:	922,363	15.9	84.1	2.2	2.6	79.1	81.1	2020	282,089	478,692	66.4 %	58.9 %	432,727	67.5 %	65.2 %
	-1.89%	VAP:	674,398	18.2	81.8	2.2	2.5	76.5	78.6	2018	201,113	453,195	66.5 %	44.4 %	406,816	68.1 %	49.4 %
27	-20,242	Total:	919,936	11.0	89.0	0.9	1.2	86.8	87.6	2020	252,913	465,477	75.8 %	54.3 %	427,287	76.4 %	59.2 %
	-2.15%	VAP:	654,991	13.0	87.0	0.9	1.2	84.5	85.4	2018	176,448	439,918	76.2 %	40.1 %	403,313	77.1 %	43.7 %

For technical reasons, election results in Texas Legislative Council reports may vary slightly from the official election results. Complete official results for all elections are maintained by the Office of the Texas Secretary of State.  
 SSVR = Spanish surname voter registration

**Plan Fit Verification**  
**SENATE DISTRICTS**  
**PLANS2153 Compared with PLANS2130**

**The amendment fits into the base plan.**



# Incumbents by District

## SENATE DISTRICTS - PLANS2153

District	Incumbents
20	Hinojosa - D
27	Lucio, Jr. - D