

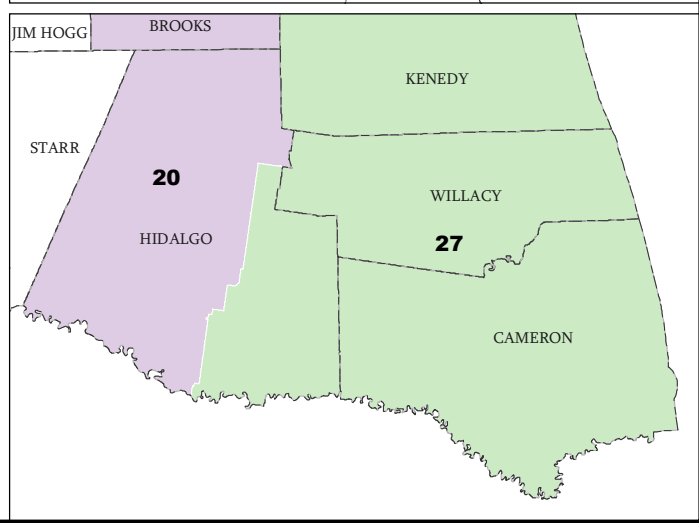
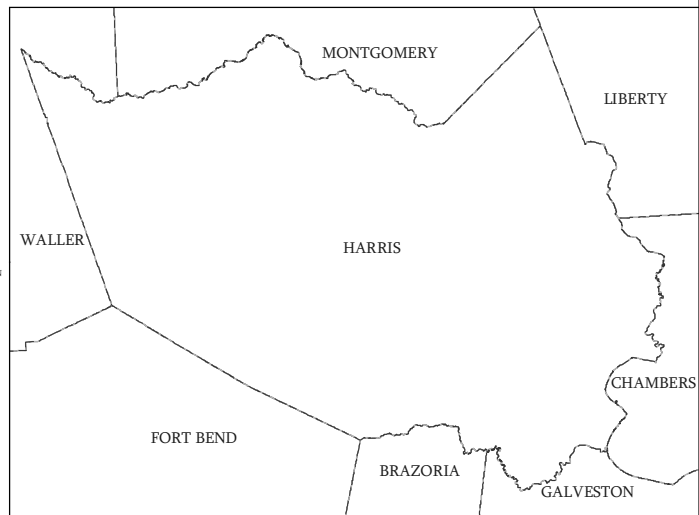
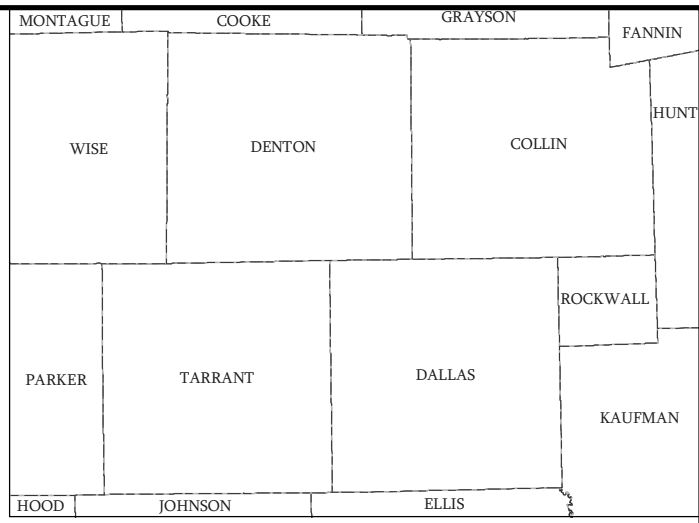
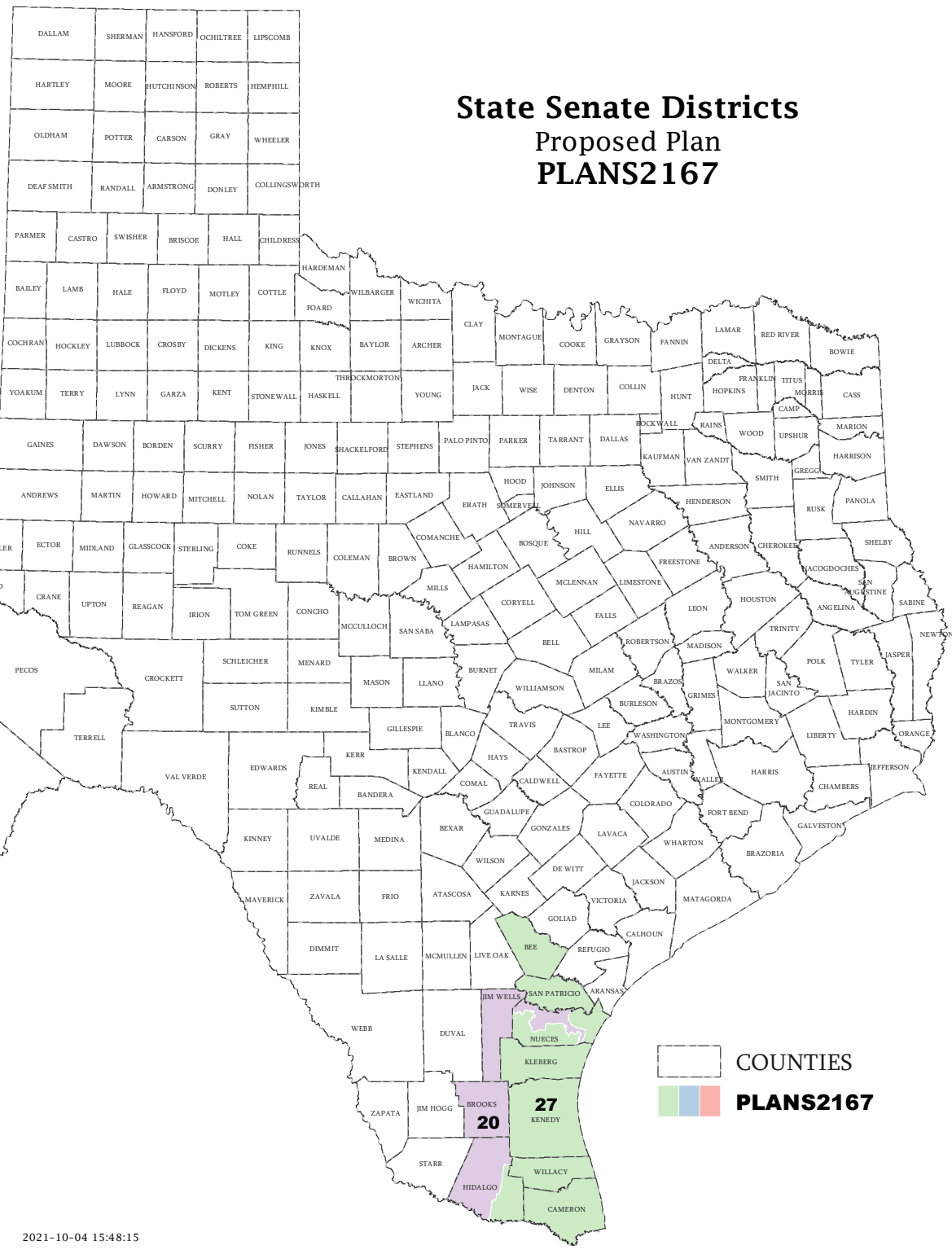
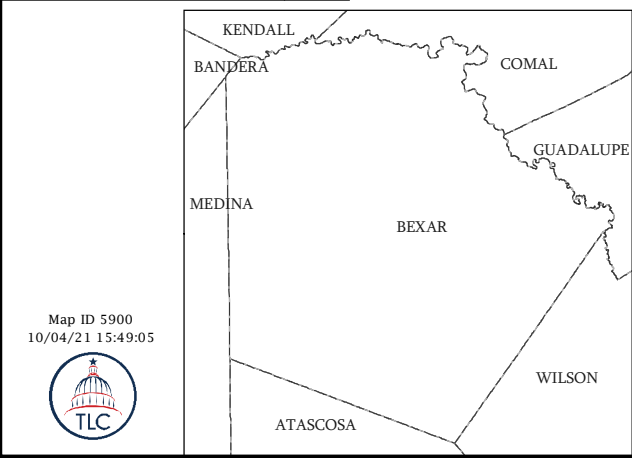
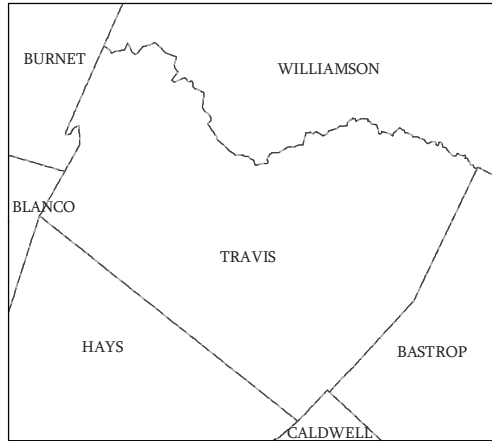
FLOOR AMENDMENT NO. _____

BY: _____

PLAN NUMBER: PLANS2167
DISTRICTS AMENDED: 20 and 27
REGIONS AFFECTED: SOUTH TEXAS

- 1 Amend C.S.S.B. No. 4 (PLANS2130) by striking Districts 20 and
- 2 27 as established by PLANS2130 and substituting Districts 20 and
- 3 27 as established by PLANS2167.

State Senate Districts Proposed Plan PLANS2167

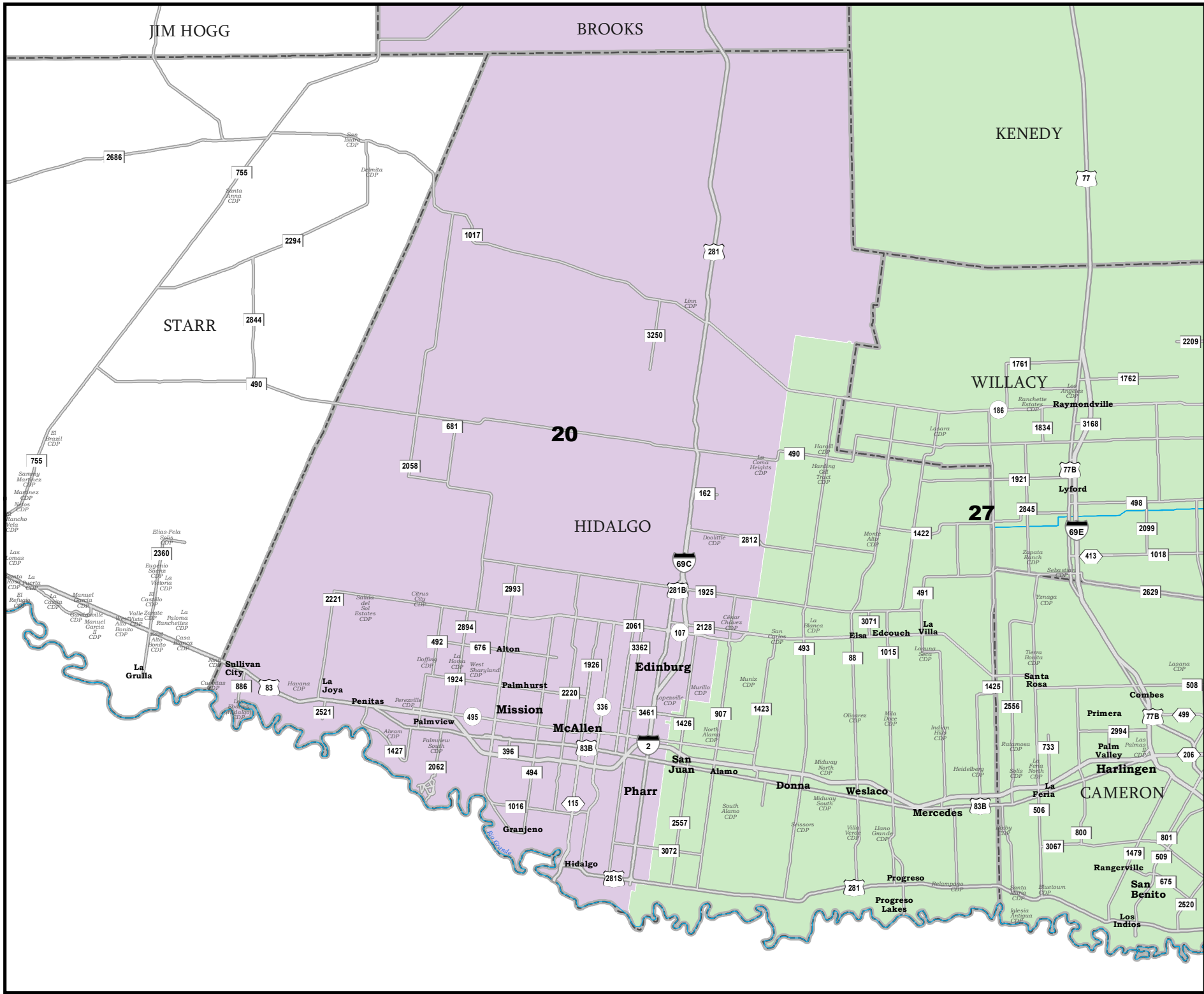


COUNTIES
 PLANS2167

Map ID 5900
10/04/21 15:49:05



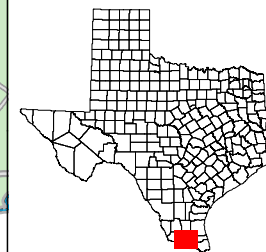
48944
2020 Census
PLANS2167 2021-10-04 15:48:15

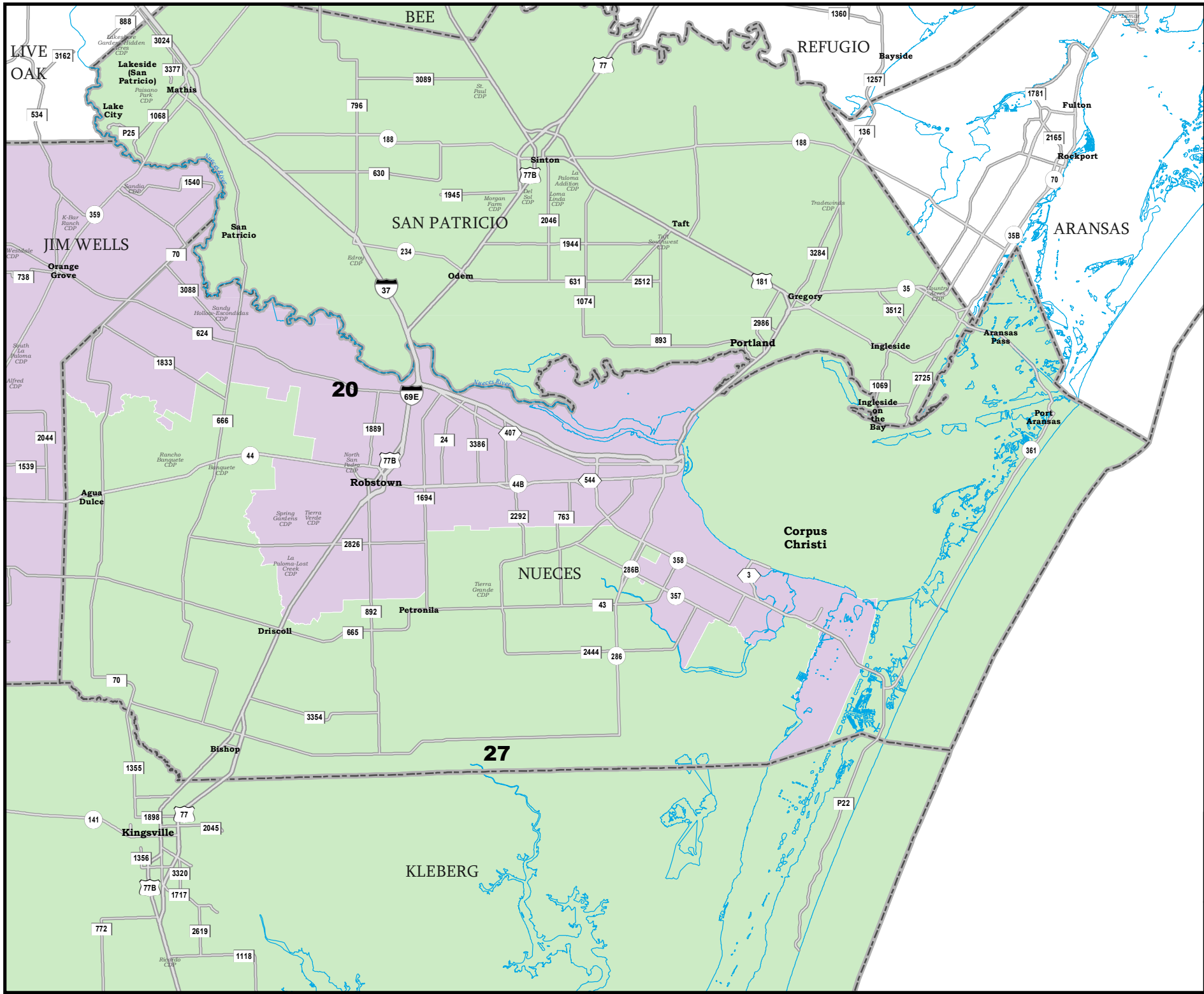


HIDALGO COUNTY

State Senate Districts Proposed Plan PLANS2167

 COUNTIES
 **PLANS2167**

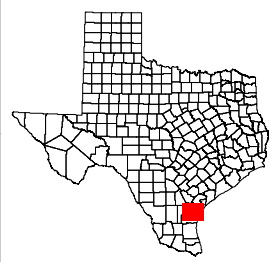




NUECES COUNTY

State Senate Districts Proposed Plan PLANS2167

 COUNTIES
 **PLANS2167**



48944
 2020 Census
 PLANS2167 2021-10-04 15:48:15

Map ID 5900
 10/04/21 15:49:05


District Population Analysis with County Subtotals
SENATE DISTRICTS - PLANS2167

Total State Population	29,145,505
Total Districts Required	31
Ideal District Population	940,178
Unassigned Population	27,303,206
Districts in Plan	2
Unassigned Geography	Yes
Districts Contiguous	Yes

	Population	-----Deviation-----	
		Total	Percent
Plan Overall Range		2,003	0.21%
Smallest District (20)	920,148	-20,030	-2.13%
Largest District (27)	922,151	-18,027	-1.92%
Average (mean)	921,150	19,029	2.03%

PLANS2167

District Population Analysis with County Subtotals

SENATE DISTRICTS - PLANS2167

	Deviation		Total	Anglo	Non-Anglo	Asian	Black	Hispanic	B+H	%Anglo	%Non-Anglo	%Asian	%Black	%Hispanic	%B+H
DISTRICT 20	-20,030	Total:	920,148	122,663	797,485	17,448	21,459	757,422	773,642	13.3	86.7	1.9	2.3	82.3	84.1
	-2.13 %	VAP:	669,192	103,447	565,745	13,056	15,085	534,495	547,170	15.5	84.5	2.0	2.3	79.9	81.8
Brooks (100%)			7,076	724	6,352	48	47	6,242	6,271	10.2	89.8	0.7	0.7	88.2	88.6
Hidalgo (68%)			587,843	38,455	549,388	9,514	5,718	534,525	537,945	6.5	93.5	1.6	1.0	90.9	91.5
Jim Wells (100%)			38,891	6,963	31,928	216	414	30,835	31,082	17.9	82.1	0.6	1.1	79.3	79.9
Nueces (81%)			286,338	76,521	209,817	7,670	15,280	185,820	198,344	26.7	73.3	2.7	5.3	64.9	69.3
DISTRICT 27	-18,027	Total:	922,151	125,453	796,698	10,553	13,407	770,792	780,204	13.6	86.4	1.1	1.5	83.6	84.6
	-1.92 %	VAP:	660,197	104,963	555,234	7,906	9,398	535,068	542,588	15.9	84.1	1.2	1.4	81.0	82.2
Bee (100%)			31,047	8,600	22,447	307	2,558	19,392	21,804	27.7	72.3	1.0	8.2	62.5	70.2
Cameron (100%)			421,017	37,107	383,910	3,637	3,410	376,680	378,477	8.8	91.2	0.9	0.8	89.5	89.9
Hidalgo (32%)			282,938	14,883	268,055	1,182	1,384	265,476	265,952	5.3	94.7	0.4	0.5	93.8	94.0
Kenedy (100%)			350	73	277	10	12	261	264	20.9	79.1	2.9	3.4	74.6	75.4
Kleberg (100%)			31,040	6,728	24,312	973	1,361	21,920	23,006	21.7	78.3	3.1	4.4	70.6	74.1
Nueces (19%)			66,840	29,644	37,196	2,955	2,399	31,232	33,136	44.4	55.6	4.4	3.6	46.7	49.6
San Patricio (100%)			68,755	26,613	42,142	1,278	1,725	38,220	39,491	38.7	61.3	1.9	2.5	55.6	57.4
Willacy (100%)			20,164	1,805	18,359	211	558	17,611	18,074	9.0	91.0	1.0	2.8	87.3	89.6

**Population and Voter Data
 with Voter Registration Comparison
 SENATE DISTRICTS - PLANS2167**

District	Deviation		Population								Total Voter Registration			Non-Suspense Voter Registration			
			Total	%Anglo	%Non-Anglo	%Asian	%Black	%Hispanic	%B+H	General Election	Turnout	Total	SSVR	TO/VR	Total	SSVR	TO/VR
20	-20,030	Total:	920,148	13.3	86.7	1.9	2.3	82.3	84.1	2020	268,726	464,013	70.0 %	57.9 %	420,953	71.1 %	63.8 %
	-2.13%	VAP:	669,192	15.5	84.5	2.0	2.3	79.9	81.8	2018	191,618	440,450	70.1 %	43.5 %	397,437	71.5 %	48.2 %
27	-18,027	Total:	922,151	13.6	86.4	1.1	1.5	83.6	84.6	2020	266,276	480,156	72.0 %	55.5 %	439,061	72.8 %	60.6 %
	-1.92%	VAP:	660,197	15.9	84.1	1.2	1.4	81.0	82.2	2018	185,943	452,663	72.5 %	41.1 %	412,692	73.5 %	45.1 %

For technical reasons, election results in Texas Legislative Council reports may vary slightly from the official election results. Complete official results for all elections are maintained by the Office of the Texas Secretary of State.
 SSVR = Spanish surname voter registration

Plan Fit Verification
SENATE DISTRICTS
PLANS2167 Compared with PLANS2130

The amendment fits into the base plan.

Incumbents by District

SENATE DISTRICTS - PLANS2167

District	Incumbents
20	Hinojosa - D
27	Lucio, Jr. - D