

## District Population Analysis with County Subtotals

### CONGRESSIONAL DISTRICTS - PLANC2115

|                           |            |
|---------------------------|------------|
| Total State Population    | 29,145,505 |
| Total Districts Required  | 38         |
| Ideal District Population | 766,987    |
| Unassigned Population     | 26,844,124 |
| Districts in Plan         | 3          |
| Unassigned Geography      | Yes        |
| Districts Contiguous      | Yes        |

|                       | <b>Population</b> | <b>-----Deviation-----</b> |                |
|-----------------------|-------------------|----------------------------|----------------|
|                       |                   | <b>Total</b>               | <b>Percent</b> |
| Plan Overall Range    |                   | 13,604                     | 1.78%          |
| Smallest District (9) | 760,495           | -6,492                     | -0.85%         |
| Largest District (29) | 774,099           | 7,112                      | 0.93%          |
| Average (mean)        | 767,127           | 4,601                      | 0.60%          |

PLANC2115

## District Population Analysis with County Subtotals

### CONGRESSIONAL DISTRICTS - PLAN2115

|                    | Deviation |        | Total   | Anglo   | Non-Anglo | Asian  | Black   | Hispanic | B+H     | %Anglo | %Non-Anglo | %Asian | %Black | %Hispanic | %B+H |
|--------------------|-----------|--------|---------|---------|-----------|--------|---------|----------|---------|--------|------------|--------|--------|-----------|------|
| <b>DISTRICT 9</b>  | -6,492    | Total: | 760,495 | 69,653  | 690,842   | 96,437 | 294,648 | 304,646  | 588,693 | 9.2    | 90.8       | 12.7   | 38.7   | 40.1      | 77.4 |
|                    | -0.85 %   | VAP:   | 568,178 | 60,353  | 507,825   | 78,985 | 218,529 | 211,967  | 424,279 | 10.6   | 89.4       | 13.9   | 38.5   | 37.3      | 74.7 |
| Fort Bend (20%)    |           |        | 167,714 | 16,790  | 150,924   | 22,758 | 79,818  | 49,851   | 127,355 | 10.0   | 90.0       | 13.6   | 47.6   | 29.7      | 75.9 |
| Harris (13%)       |           |        | 592,781 | 52,863  | 539,918   | 73,679 | 214,830 | 254,795  | 461,338 | 8.9    | 91.1       | 12.4   | 36.2   | 43.0      | 77.8 |
| <b>DISTRICT 18</b> | -200      | Total: | 766,787 | 117,041 | 649,746   | 38,398 | 283,624 | 329,959  | 604,945 | 15.3   | 84.7       | 5.0    | 37.0   | 43.0      | 78.9 |
|                    | -0.03 %   | VAP:   | 575,769 | 102,776 | 472,993   | 31,810 | 213,356 | 227,208  | 435,916 | 17.9   | 82.1       | 5.5    | 37.1   | 39.5      | 75.7 |
| Harris (16%)       |           |        | 766,787 | 117,041 | 649,746   | 38,398 | 283,624 | 329,959  | 604,945 | 15.3   | 84.7       | 5.0    | 37.0   | 43.0      | 78.9 |
| <b>DISTRICT 29</b> | 7,112     | Total: | 774,099 | 73,069  | 701,030   | 25,349 | 101,577 | 577,046  | 671,019 | 9.4    | 90.6       | 3.3    | 13.1   | 74.5      | 86.7 |
|                    | 0.93 %    | VAP:   | 554,805 | 62,227  | 492,578   | 19,594 | 71,885  | 401,244  | 469,246 | 11.2   | 88.8       | 3.5    | 13.0   | 72.3      | 84.6 |
| Harris (16%)       |           |        | 774,099 | 73,069  | 701,030   | 25,349 | 101,577 | 577,046  | 671,019 | 9.4    | 90.6       | 3.3    | 13.1   | 74.5      | 86.7 |

Population and Voter Data  
 with Voter Registration Comparison

CONGRESSIONAL DISTRICTS - PLAN2115

| District | Deviation |        | Population |        |            |        |        |           |      | Total Voter Registration |         |         | Non-Suspense Voter Registration |        |         |        |        |
|----------|-----------|--------|------------|--------|------------|--------|--------|-----------|------|--------------------------|---------|---------|---------------------------------|--------|---------|--------|--------|
|          |           |        | Total      | %Anglo | %Non-Anglo | %Asian | %Black | %Hispanic | %B+H | General Election         | Turnout | Total   | SSVR                            | TO/VR  | Total   | SSVR   | TO/VR  |
| 9        | -6,492    | Total: | 760,495    | 9.2    | 90.8       | 12.7   | 38.7   | 40.1      | 77.4 | 2020                     | 234,798 | 375,305 | 19.4 %                          | 62.6 % | 344,917 | 19.9 % | 68.1 % |
|          | -0.85%    | VAP:   | 568,178    | 10.6   | 89.4       | 13.9   | 38.5   | 37.3      | 74.7 | 2018                     | 171,178 | 357,315 | 18.5 %                          | 47.9 % | 322,672 | 19.2 % | 53.1 % |
| 18       | -200      | Total: | 766,787    | 15.3   | 84.7       | 5.0    | 37.0   | 43.0      | 78.9 | 2020                     | 240,648 | 398,604 | 21.0 %                          | 60.4 % | 360,897 | 21.7 % | 66.7 % |
|          | -0.03%    | VAP:   | 575,769    | 17.9   | 82.1       | 5.5    | 37.1   | 39.5      | 75.7 | 2018                     | 178,753 | 381,897 | 19.9 %                          | 46.8 % | 341,206 | 20.6 % | 52.4 % |
| 29       | 7,112     | Total: | 774,099    | 9.4    | 90.6       | 3.3    | 13.1   | 74.5      | 86.7 | 2020                     | 180,980 | 324,695 | 56.7 %                          | 55.7 % | 303,598 | 57.7 % | 59.6 % |
|          | 0.93%     | VAP:   | 554,805    | 11.2   | 88.8       | 3.5    | 13.0   | 72.3      | 84.6 | 2018                     | 132,362 | 309,369 | 56.0 %                          | 42.8 % | 285,263 | 57.3 % | 46.4 % |

For technical reasons, election results in Texas Legislative Council reports may vary slightly from the official election results. Complete official results for all elections are maintained by the Office of the Texas Secretary of State.  
 SSVR = Spanish surname voter registration

Plan Fit Verification  
**CONGRESSIONAL DISTRICTS**  
**PLANC2115 Compared with PLANC2116**

**The amendment DOES NOT FIT into the base plan.**

The amendment affects districts in the base plan that are not in the amendment.

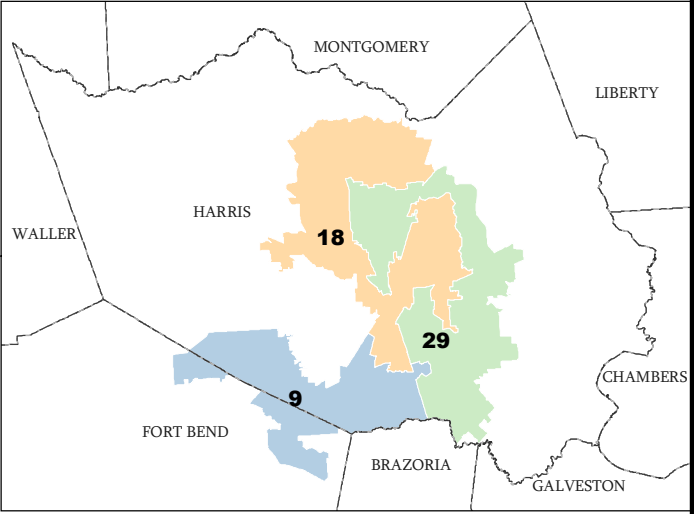
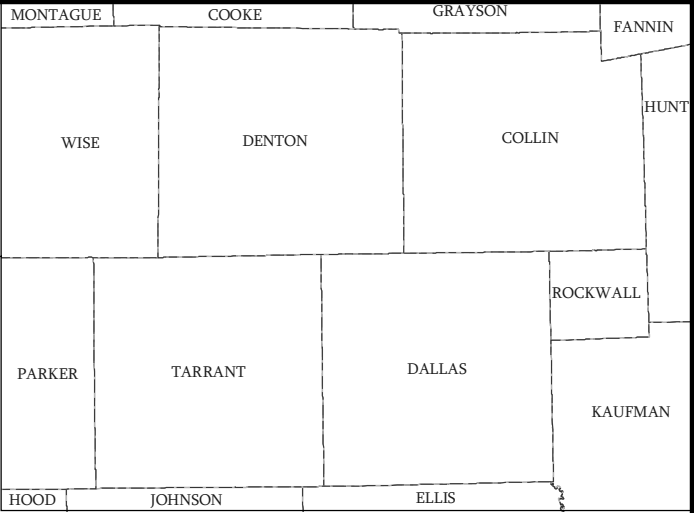
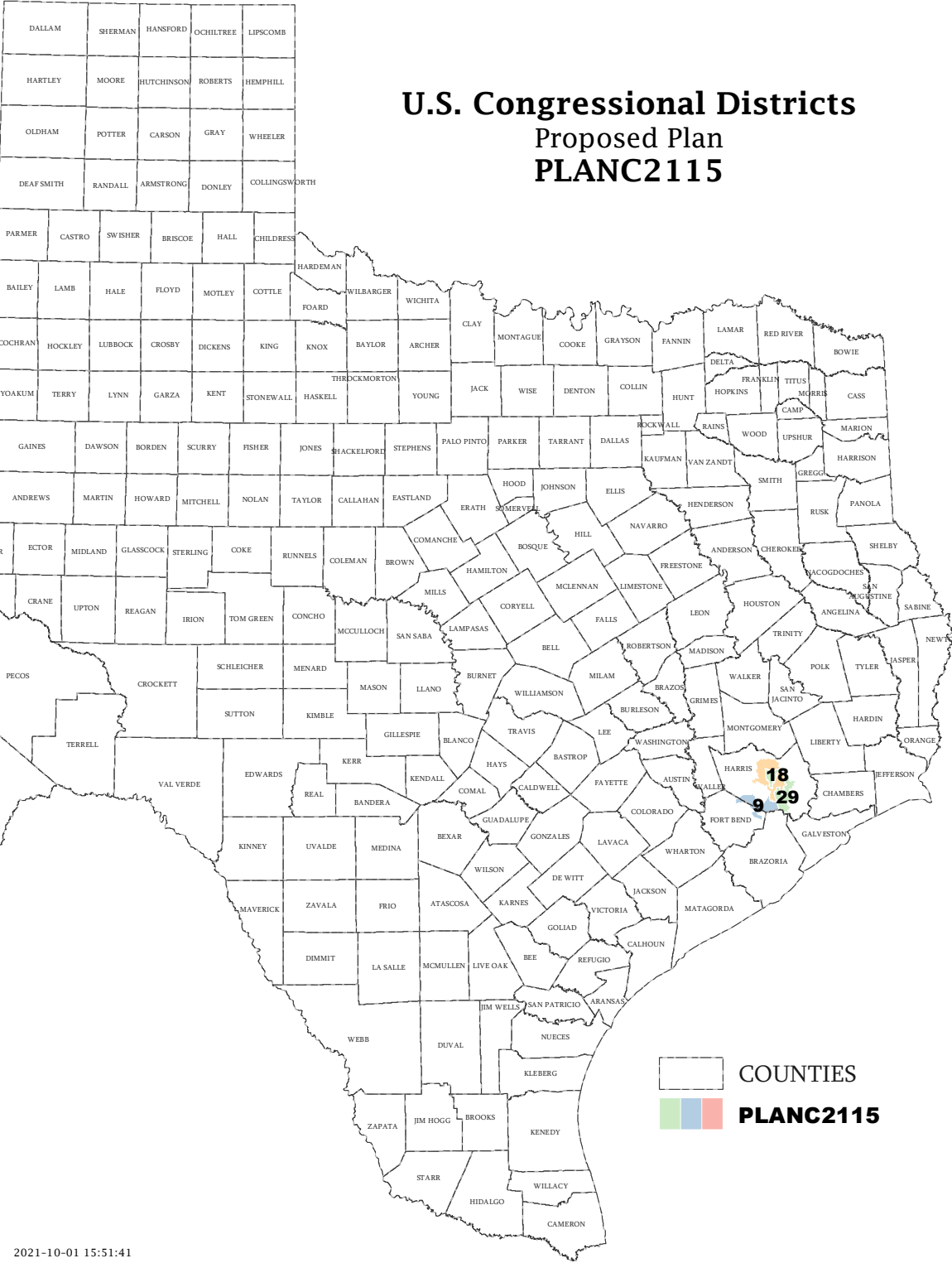
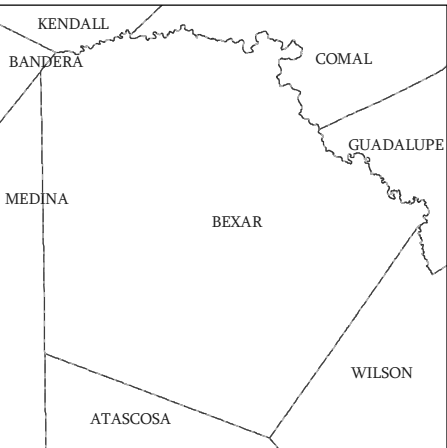
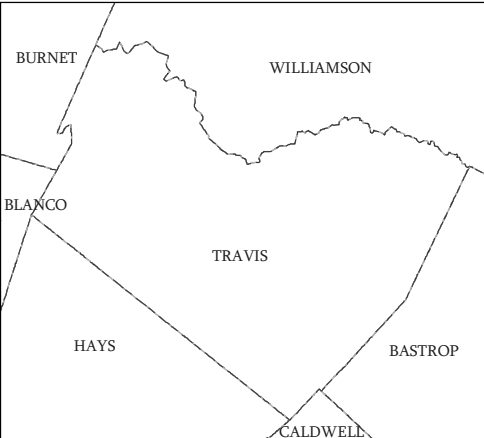
**WARNING:** The amendment unassigns 47821 blocks that were assigned in the base plan.

# Incumbents by District

## CONGRESSIONAL DISTRICTS - PLANC2115

| District | Incumbents      |
|----------|-----------------|
| 9        | Green - D       |
| 18       | Jackson Lee - D |
| 29       | Garcia - D      |

# U.S. Congressional Districts Proposed Plan PLANC2115

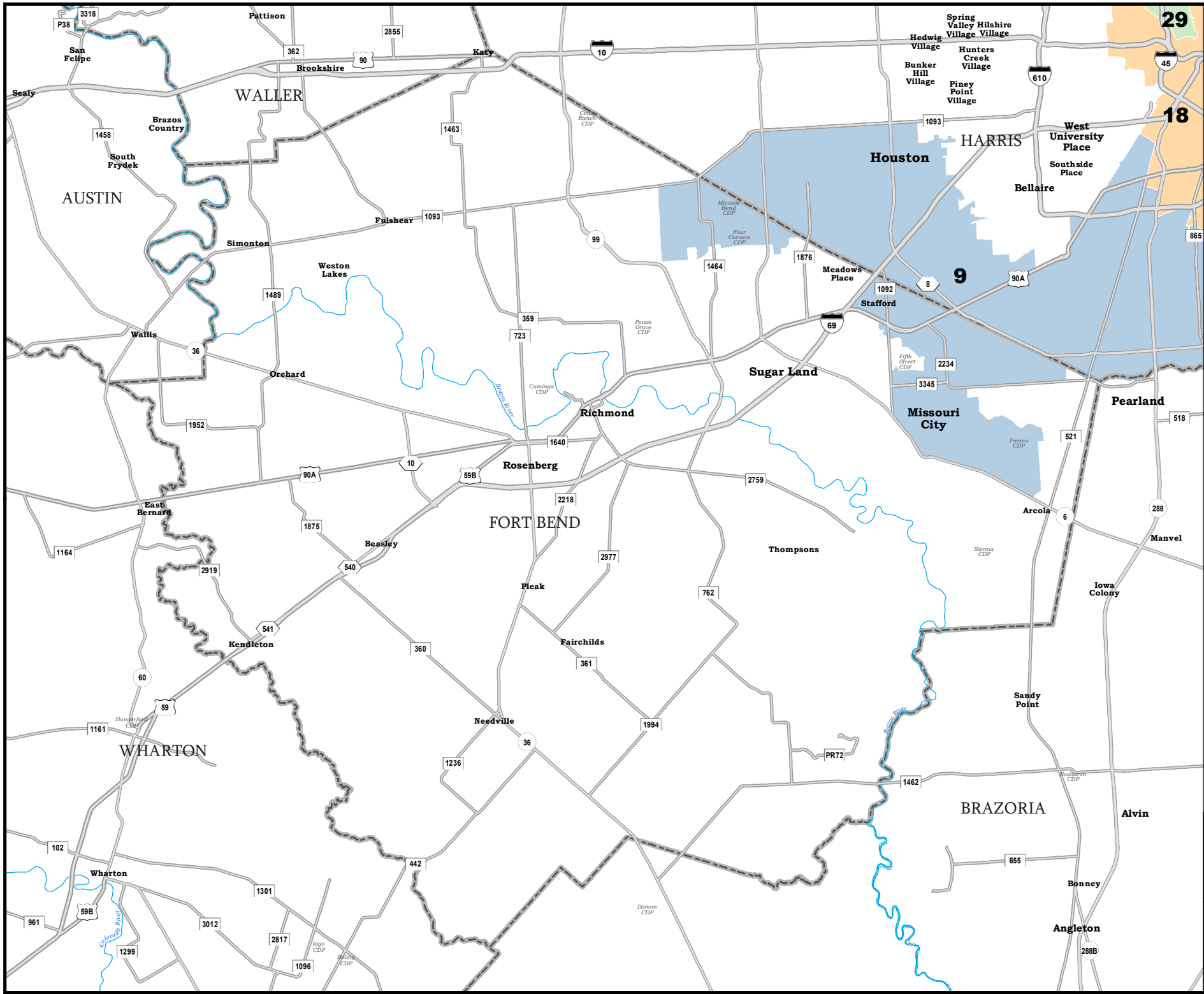


 COUNTIES  
 **PLANC2115**

Map ID 5900  
10/01/21 15:59:04



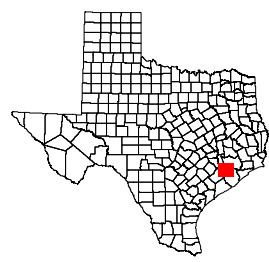
48666  
2020 Census  
PLANC2115 2021-10-01 15:51:41

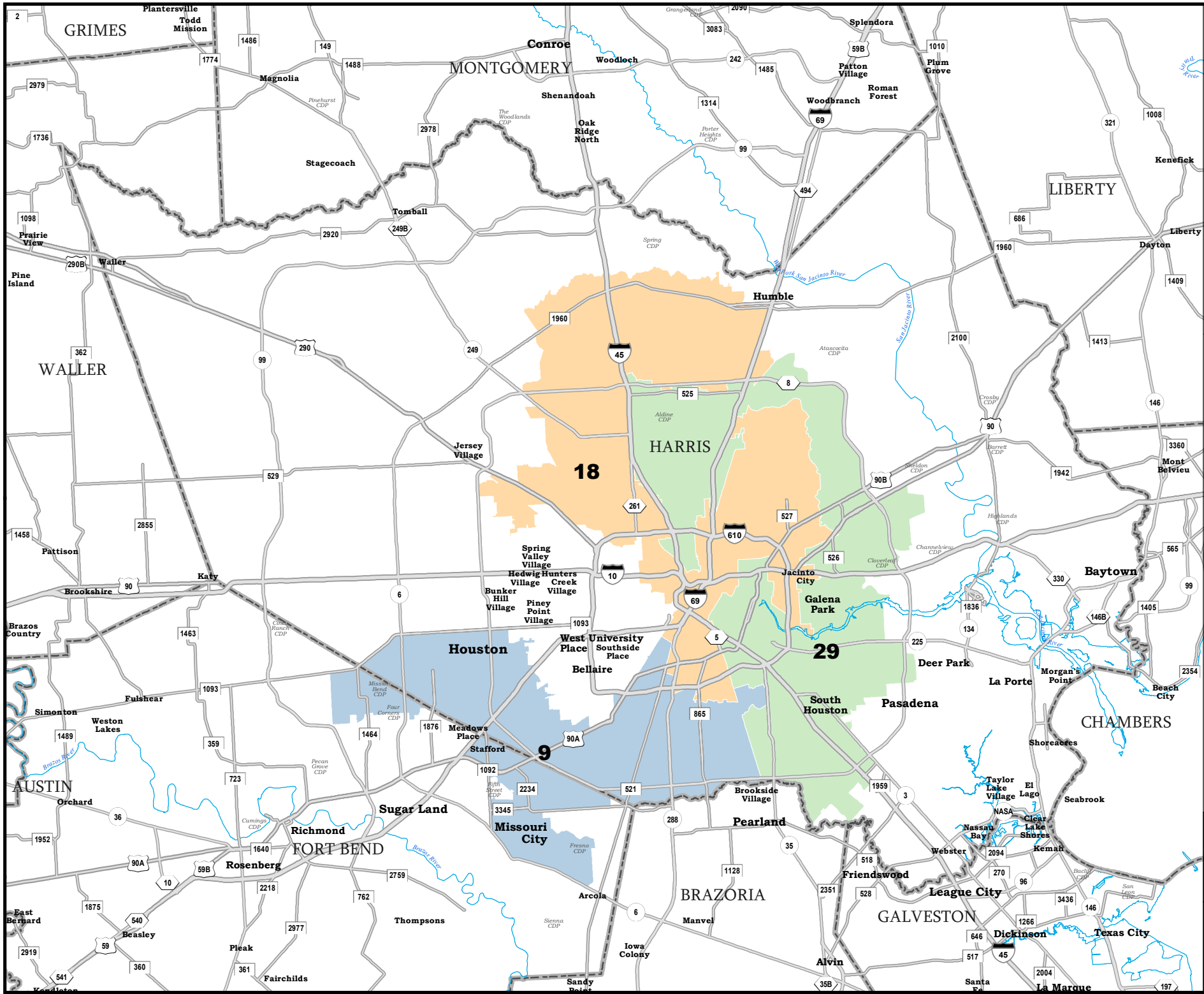


# FORT BEND COUNTY

## U.S. Congressional Districts Proposed Plan PLANC2115

 COUNTIES  
 **PLANC2115**

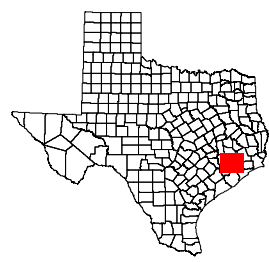





# HARRIS COUNTY

## U.S. Congressional Districts Proposed Plan PLANC2115

 COUNTIES  
 **PLANC2115**



Map ID 5900  
 10/01/21 15:59:04  
  
 48666  
 2020 Census  
 PLANC2115 2021-10-01 15:51:41