

## District Population Analysis with County Subtotals

### CONGRESSIONAL DISTRICTS - PLANC2141

Total State Population	29,145,505
Total Districts Required	38
Ideal District Population	766,987
Unassigned Population	26,844,544
Districts in Plan	3
Unassigned Geography	Yes
Districts Contiguous	Yes

	<b>Population</b>	<b>-----Deviation-----</b>	
		<b>Total</b>	<b>Percent</b>
Plan Overall Range		20	0.00%
Smallest District (4)	766,980	-7	0.00%
Largest District (5)	767,000	13	0.00%
Average (mean)	766,987	9	0.00%

PLANC2141

## District Population Analysis with County Subtotals

### CONGRESSIONAL DISTRICTS - PLAN2141

	Deviation		Total	Anglo	Non-Anglo	Asian	Black	Hispanic	B+H	%Anglo	%Non-Anglo	%Asian	%Black	%Hispanic	%B+H
<b>DISTRICT 1</b>	-6	Total:	766,981	481,498	285,483	12,695	126,096	128,126	250,999	62.8	37.2	1.7	16.4	16.7	32.7
	0.00 %	VAP:	586,395	388,616	197,779	8,991	91,888	81,194	171,765	66.3	33.7	1.5	15.7	13.8	29.3
Camp (100%)			12,464	6,734	5,730	154	2,092	3,222	5,262	54.0	46.0	1.2	16.8	25.9	42.2
Cass (100%)			28,454	21,028	7,426	199	4,941	1,336	6,224	73.9	26.1	0.7	17.4	4.7	21.9
Gregg (100%)			124,239	68,050	56,189	2,137	27,498	24,040	50,879	54.8	45.2	1.7	22.1	19.3	41.0
Harrison (100%)			68,839	42,039	26,800	718	14,553	9,839	24,107	61.1	38.9	1.0	21.1	14.3	35.0
Hunt (14%)			13,630	10,562	3,068	117	202	2,086	2,263	77.5	22.5	0.9	1.5	15.3	16.6
Marion (100%)			9,725	6,869	2,856	96	2,026	389	2,380	70.6	29.4	1.0	20.8	4.0	24.5
Morris (100%)			11,960	7,707	4,253	97	2,703	1,182	3,848	64.4	35.6	0.8	22.6	9.9	32.2
Panola (100%)			22,491	16,098	6,393	178	3,509	2,190	5,633	71.6	28.4	0.8	15.6	9.7	25.0
Rains (100%)			12,164	10,130	2,034	103	360	1,109	1,446	83.3	16.7	0.8	3.0	9.1	11.9
Rockwall (45%)			48,847	29,992	18,855	1,848	4,740	11,102	15,581	61.4	38.6	3.8	9.7	22.7	31.9
Rusk (100%)			52,214	32,022	20,192	349	9,032	9,579	18,445	61.3	38.7	0.7	17.3	18.3	35.3
Sabine (100%)			9,894	8,307	1,587	82	852	393	1,200	84.0	16.0	0.8	8.6	4.0	12.1
San Augustine (100%)			7,918	5,270	2,648	64	1,897	639	2,487	66.6	33.4	0.8	24.0	8.1	31.4
Shelby (100%)			24,022	14,416	9,606	458	4,095	4,685	8,702	60.0	40.0	1.9	17.0	19.5	36.2
Smith (100%)			233,479	134,452	99,027	5,402	41,819	47,281	87,936	57.6	42.4	2.3	17.9	20.3	37.7
Titus (3%)			906	629	277	7	64	174	236	69.4	30.6	0.8	7.1	19.2	26.0
Upshur (100%)			40,892	31,287	9,605	319	3,592	3,986	7,462	76.5	23.5	0.8	8.8	9.7	18.2
Wood (100%)			44,843	35,906	8,937	367	2,121	4,894	6,908	80.1	19.9	0.8	4.7	10.9	15.4
<b>DISTRICT 4</b>	-7	Total:	766,980	436,528	330,452	99,974	100,708	108,043	205,295	56.9	43.1	13.0	13.1	14.1	26.8
	0.00 %	VAP:	578,578	349,716	228,862	69,324	70,967	71,037	140,502	60.4	39.6	12.0	12.3	12.3	24.3
Bowie (100%)			92,893	55,855	37,038	1,506	25,188	7,602	32,451	60.1	39.9	1.6	27.1	8.2	34.9
Collin (29%)			307,284	136,375	170,909	82,102	41,225	42,655	82,230	44.4	55.6	26.7	13.4	13.9	26.8
Delta (100%)			5,230	4,189	1,041	63	402	394	765	80.1	19.9	1.2	7.7	7.5	14.6
Denton (6%)			51,193	27,361	23,832	11,709	5,538	5,683	10,940	53.4	46.6	22.9	10.8	11.1	21.4
Fannin (100%)			35,662	27,042	8,620	319	2,628	4,218	6,760	75.8	24.2	0.9	7.4	11.8	19.0
Franklin (100%)			10,359	7,876	2,483	104	534	1,455	1,943	76.0	24.0	1.0	5.2	14.0	18.8
Grayson (100%)			135,543	95,211	40,332	2,686	9,856	20,868	30,196	70.2	29.8	2.0	7.3	15.4	22.3
Hopkins (100%)			36,787	25,976	10,811	420	2,847	6,484	9,237	70.6	29.4	1.1	7.7	17.6	25.1
Lamar (100%)			50,088	35,354	14,734	645	7,310	4,412	11,570	70.6	29.4	1.3	14.6	8.8	23.1
Morris (0%)			13	9	4	1	2	0	2	69.2	30.8	7.7	15.4	0.0	15.4
Red River (100%)			11,587	8,499	3,088	97	1,895	766	2,608	73.3	26.7	0.8	16.4	6.6	22.5
Titus (97%)			30,341	12,781	17,560	322	3,283	13,506	16,593	42.1	57.9	1.1	10.8	44.5	54.7
<b>DISTRICT 5</b>	13	Total:	767,000	361,021	405,979	42,768	120,728	229,405	345,261	47.1	52.9	5.6	15.7	29.9	45.0
	0.00 %	VAP:	569,821	292,864	276,957	31,959	82,349	150,115	230,417	51.4	48.6	5.6	14.5	26.3	40.4
Dallas (16%)			421,027	132,349	288,678	35,782	83,536	165,469	245,666	31.4	68.6	8.5	19.8	39.3	58.3
Henderson (100%)			82,150	61,854	20,296	794	5,694	11,242	16,696	75.3	24.7	1.0	6.9	13.7	20.3

## District Population Analysis with County Subtotals

### CONGRESSIONAL DISTRICTS - PLAN2141

	Deviation		Total	Anglo	Non-Anglo	Asian	Black	Hispanic	B+H	%Anglo	%Non-Anglo	%Asian	%Black	%Hispanic	%B+H
<b>DISTRICT 5</b>	13	Total:	767,000	361,021	405,979	42,768	120,728	229,405	345,261	47.1	52.9	5.6	15.7	29.9	45.0
	0.00 %	VAP:	569,821	292,864	276,957	31,959	82,349	150,115	230,417	51.4	48.6	5.6	14.5	26.3	40.4
Kaufman (100%)			145,310	78,626	66,684	3,026	24,448	36,165	59,668	54.1	45.9	2.1	16.8	24.9	41.1
Rockwall (55%)			58,972	40,206	18,766	2,685	5,032	9,458	14,230	68.2	31.8	4.6	8.5	16.0	24.1
Van Zandt (100%)			59,541	47,986	11,555	481	2,018	7,071	9,001	80.6	19.4	0.8	3.4	11.9	15.1

Population and Voter Data  
 with Voter Registration Comparison

CONGRESSIONAL DISTRICTS - PLAN2141

District	Deviation		Population							Total Voter Registration			Non-Suspense Voter Registration				
			Total	%Anglo	%Non-Anglo	%Asian	%Black	%Hispanic	%B+H	General Election	Turnout	Total	SSVR	TO/VR	Total	SSVR	TO/VR
1	-6 0.00%	Total:	766,981	62.8	37.2	1.7	16.4	16.7	32.7	2020	338,129	497,699	6.0 %	67.9 %	452,765	6.1 %	74.7 %
		VAP:	586,395	66.3	33.7	1.5	15.7	13.8	29.3	2018	254,439	469,123	5.5 %	54.2 %	427,178	5.6 %	59.6 %
4	-7 0.00%	Total:	766,980	56.9	43.1	13.0	13.1	14.1	26.8	2020	331,906	471,565	6.0 %	70.4 %	424,740	6.0 %	78.1 %
		VAP:	578,578	60.4	39.6	12.0	12.3	12.3	24.3	2018	243,428	437,523	5.6 %	55.6 %	388,546	5.6 %	62.7 %
5	13 0.00%	Total:	767,000	47.1	52.9	5.6	15.7	29.9	45.0	2020	300,571	441,693	13.8 %	68.0 %	403,134	14.0 %	74.6 %
		VAP:	569,821	51.4	48.6	5.6	14.5	26.3	40.4	2018	223,315	411,904	12.8 %	54.2 %	372,781	13.2 %	59.9 %

For technical reasons, election results in Texas Legislative Council reports may vary slightly from the official election results. Complete official results for all elections are maintained by the Office of the Texas Secretary of State.  
 SSVR = Spanish surname voter registration

**Plan Fit Verification**  
**CONGRESSIONAL DISTRICTS**  
**PLANC2141 Compared with PLANC2135**

**The amendment fits into the base plan.**

# Incumbents by District

## CONGRESSIONAL DISTRICTS - PLANC2141

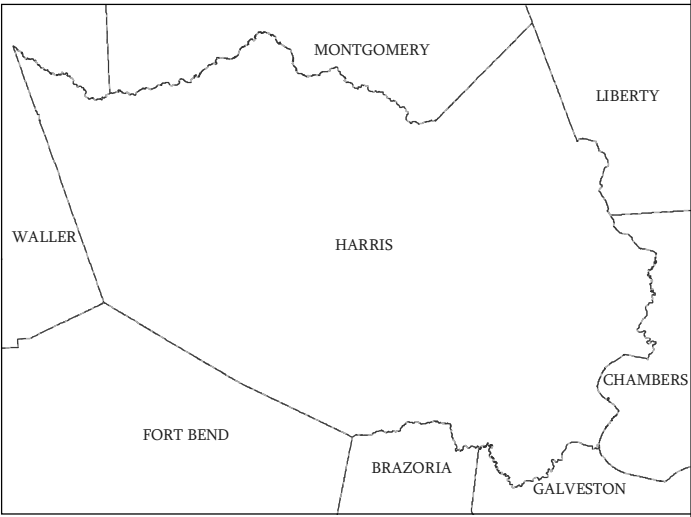
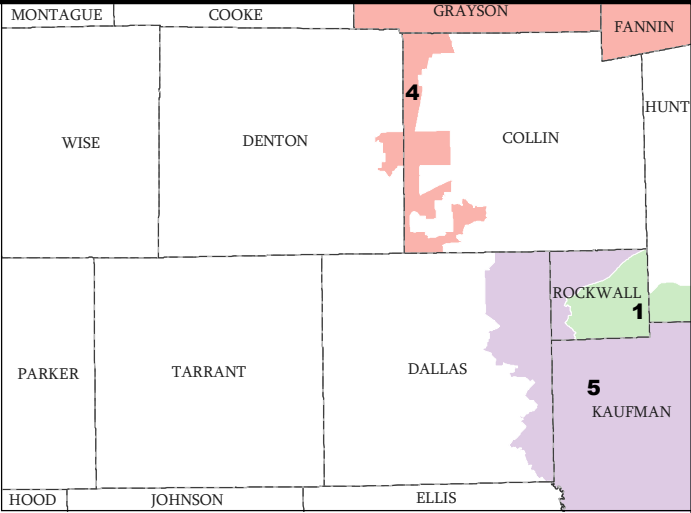
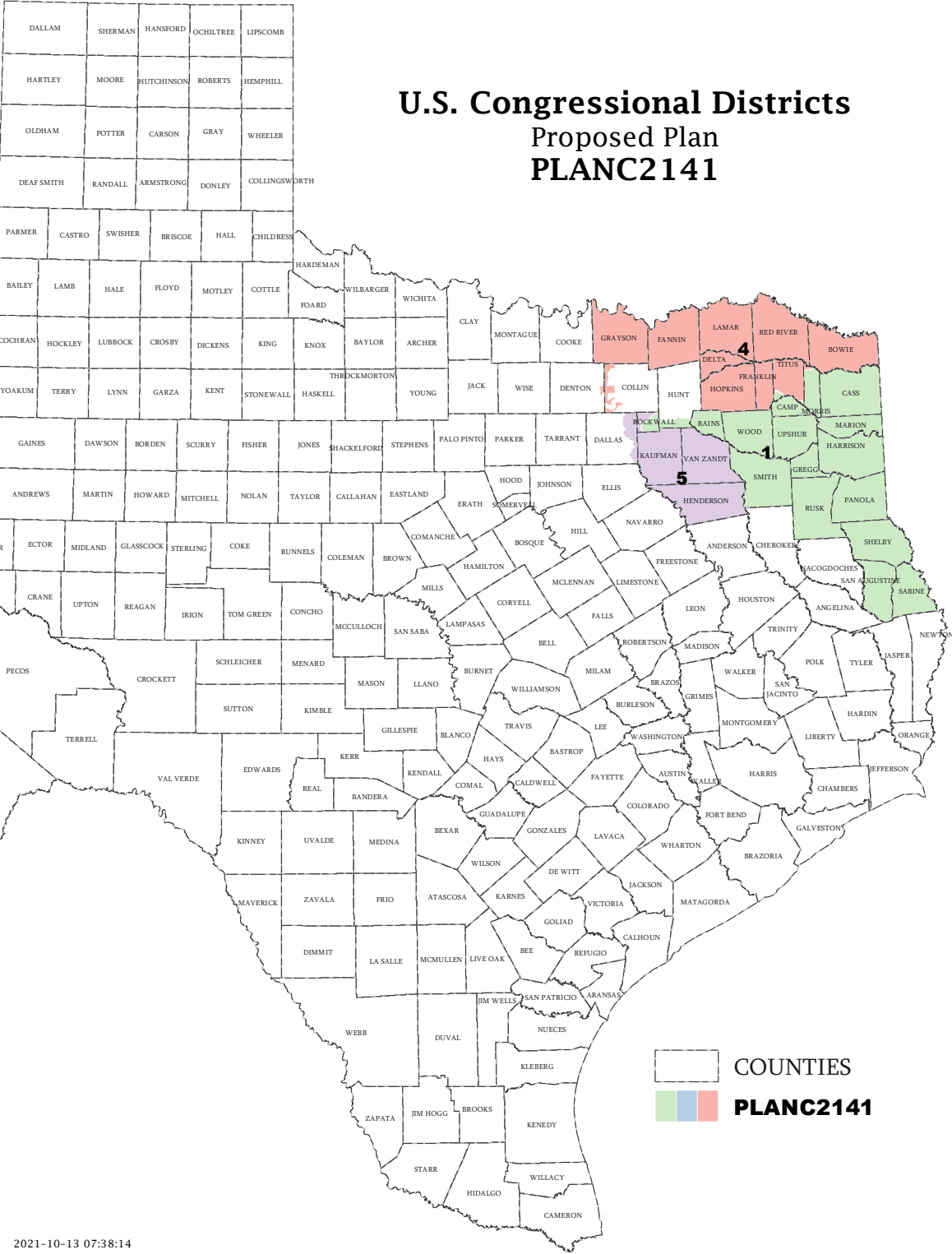
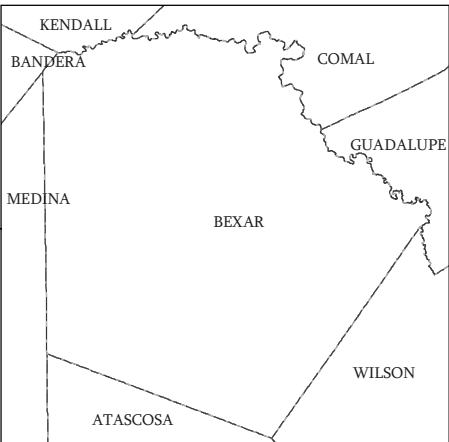
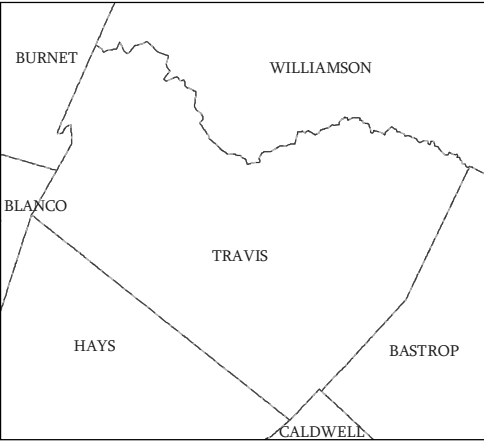
District	Incumbents
1	Gohmert - R
4	Fallon - R
5	Gooden - R

**American Community Survey Special Tabulation  
 Using Census and American Community Survey Data  
 CONGRESSIONAL DISTRICTS - PLANC2141**

2020 Census			Special Tabulation of Citizen Voting Age Population (CVAP) from the 2015-2019 American Community Survey with Margins of Error												
			CVAP	Hispanic CVAP % Hispanic	Not Hispanic or Latino Citizen Voting Age Population (CVAP)										
District	Total	VAP			% Black Alone	% Black + White	% Black + American Indian	% White Alone	% American Indian Alone	% Asian Alone	% Native Hawaiian Alone	% American Indian + White	% Asian + White	% Remainder 2 or More Other	
1	766,981	586,395	544,045 (±6,580)	8.5 (±0.4)	16.6 (±0.6)	0.2 (±0.1)	0.1(±0.1)	72.7 (±0.5)	0.3 (±0.1)	0.8 (±0.1)	0.1 (±0.1)	0.5 (±0.1)	0.1 (±0.1)	0.1 (±0.1)	
4	766,980	578,578	499,625 (±5,542)	8.3 (±0.4)	11.9 (±0.5)	0.4 (±0.1)	0.1(±0.1)	71.8 (±0.5)	0.6 (±0.1)	5.3 (±0.3)	0.1 (±0.1)	0.9 (±0.1)	0.3 (±0.1)	0.2 (±0.1)	
5	767,000	569,821	467,530 (±6,110)	17.1 (±0.6)	14.2 (±0.6)	0.4 (±0.1)	0.1(±0.1)	62.7 (±0.6)	0.5 (±0.1)	4.1 (±0.3)	0.0 (±0.1)	0.6 (±0.1)	0.2 (±0.1)	0.2 (±0.1)	

The American Community Survey provided estimated citizen voting age population (CVAP) data at the block group level in a Special Tabulation. Because the MOE can only be calculated using whole block groups, all block groups with more than 50% of the population in a district are included in the analysis. The Red-118 report provides a summary of the block groups used in the analysis.  
 The percent for each CVAP population category is that group's CVAP divided by the CVAP total.  
 Numbers in parentheses are margins of error at 90% confidence level.

# U.S. Congressional Districts Proposed Plan PLANC2141



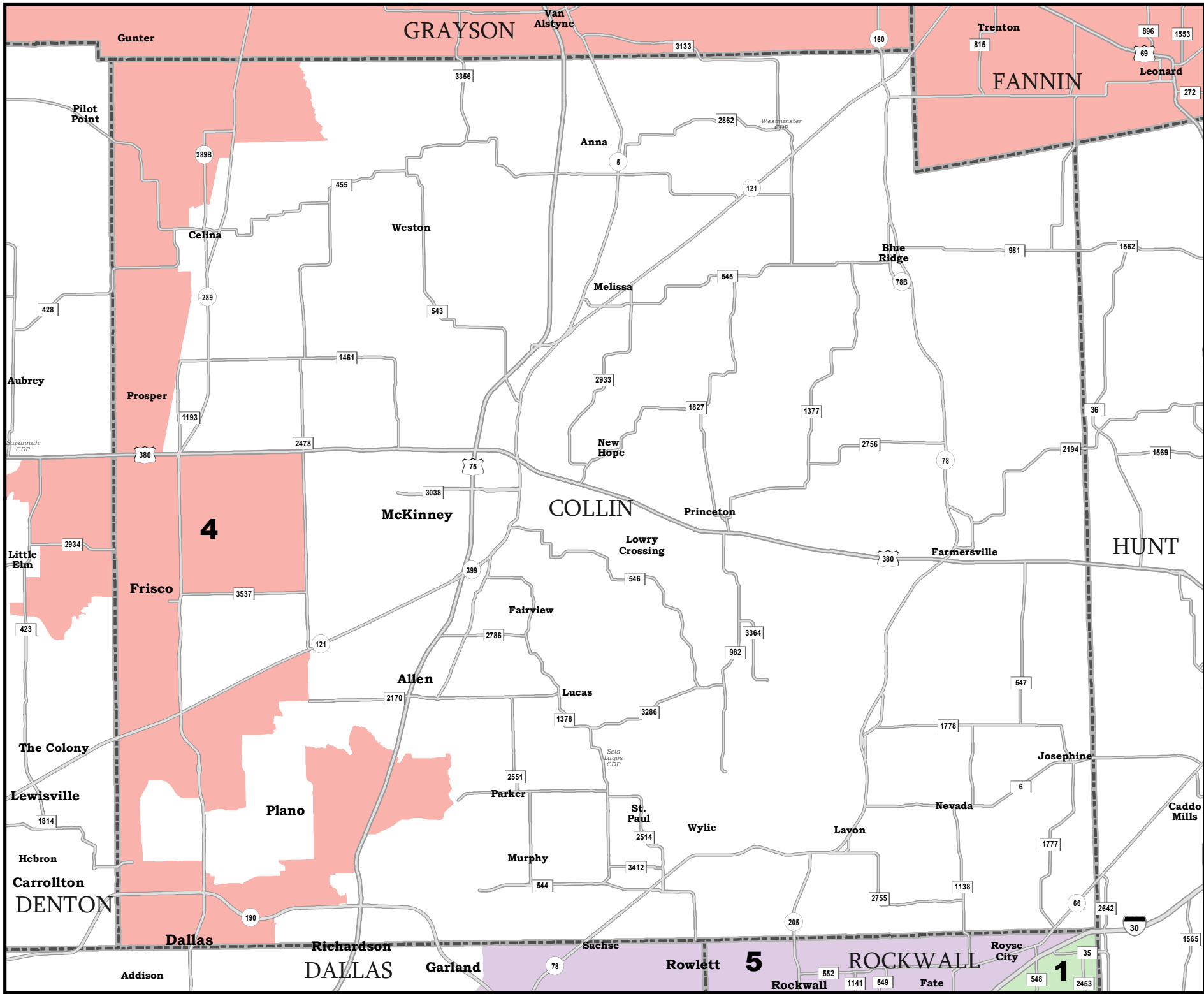
 COUNTIES  
   **PLANC2141**

Map ID 5900  
10/13/21 07:39:29



49909  
2020 Census  
PLANC2141 2021-10-13 07:38:14

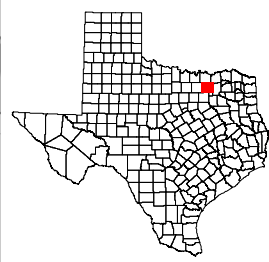





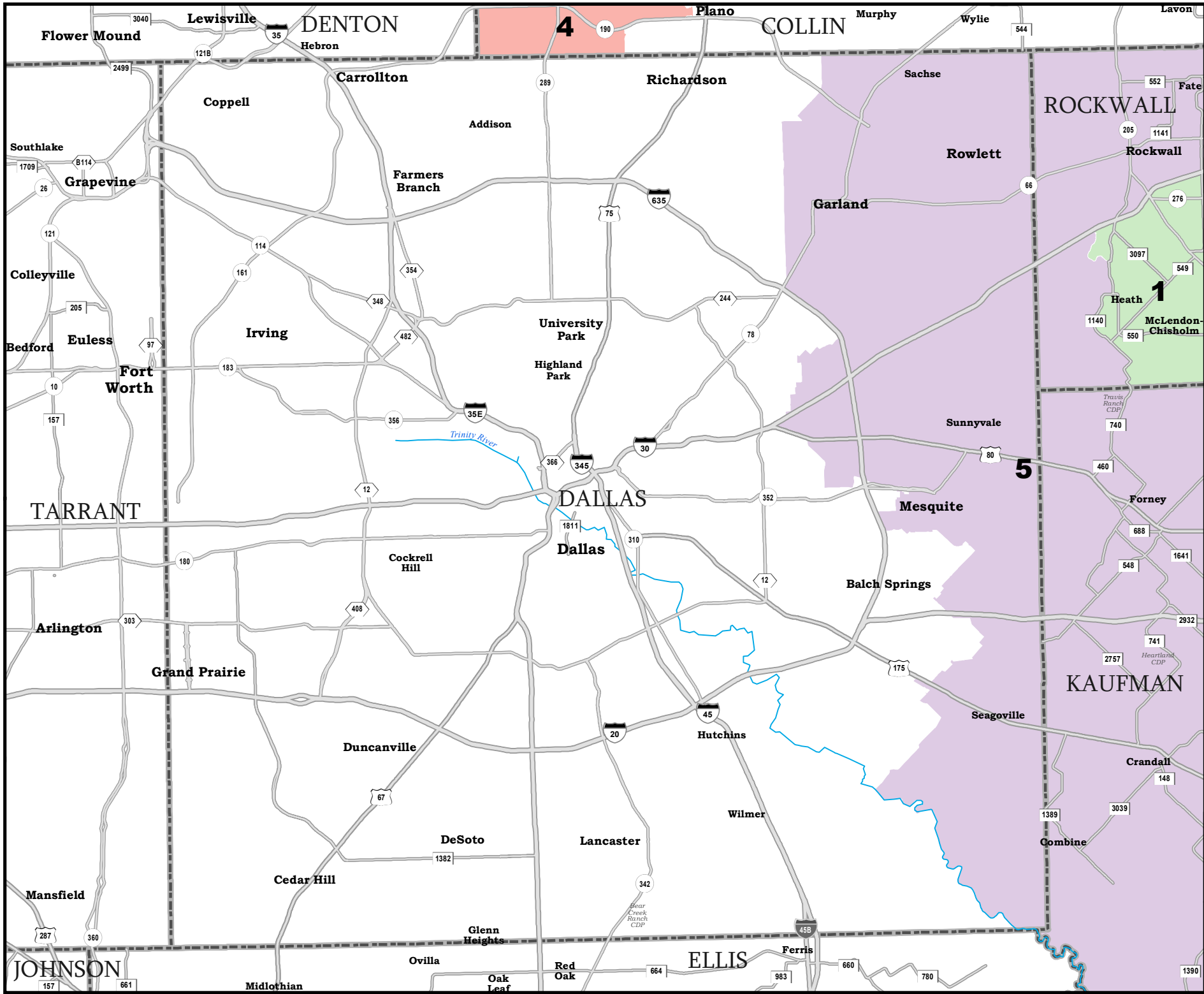
# COLLIN COUNTY

## U.S. Congressional Districts Proposed Plan PLANC2141

 COUNTIES  
 **PLANC2141**



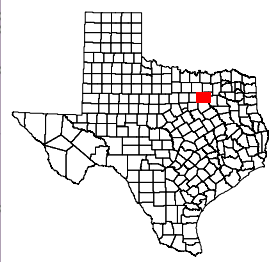
Map ID 5900  
 10/13/21 07:39:29  
 49909  
 2020 Census  
 PLANC2141 2021-10-13 07:38:14  


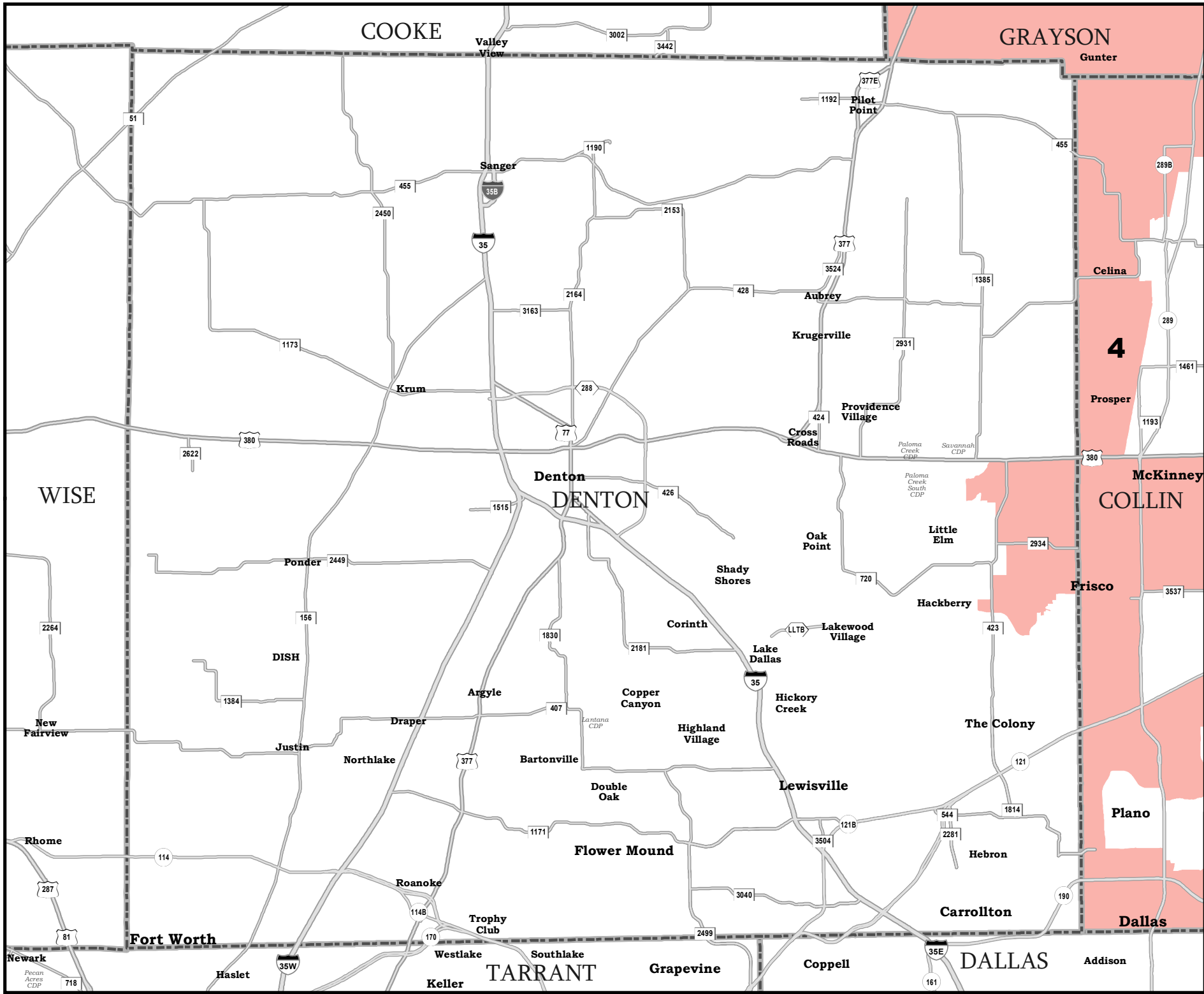


# DALLAS COUNTY

## U.S. Congressional Districts Proposed Plan PLANC2141

 COUNTIES  
 **PLANC2141**

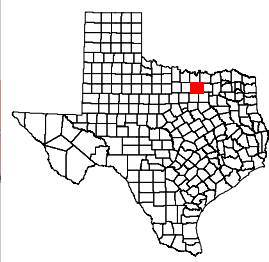




# DENTON COUNTY

## U.S. Congressional Districts Proposed Plan PLANC2141

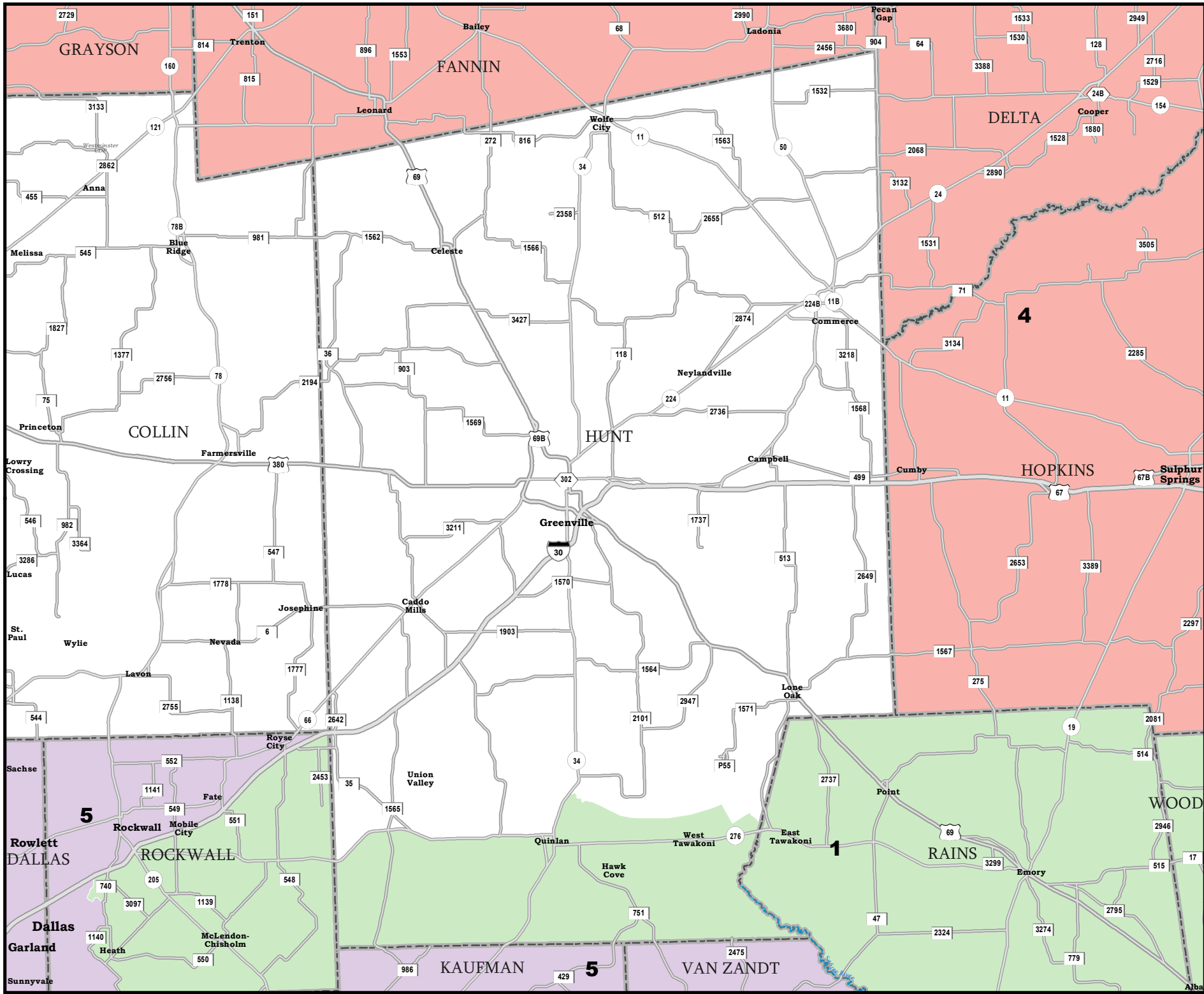
 COUNTIES  
 **PLANC2141**



Map ID 5900  
10/13/21 07:39:29



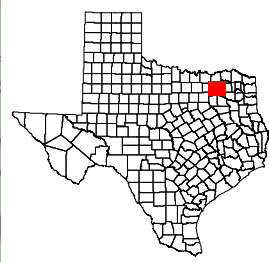
49909  
2020 Census  
PLANC2141 2021-10-13 07:38:14

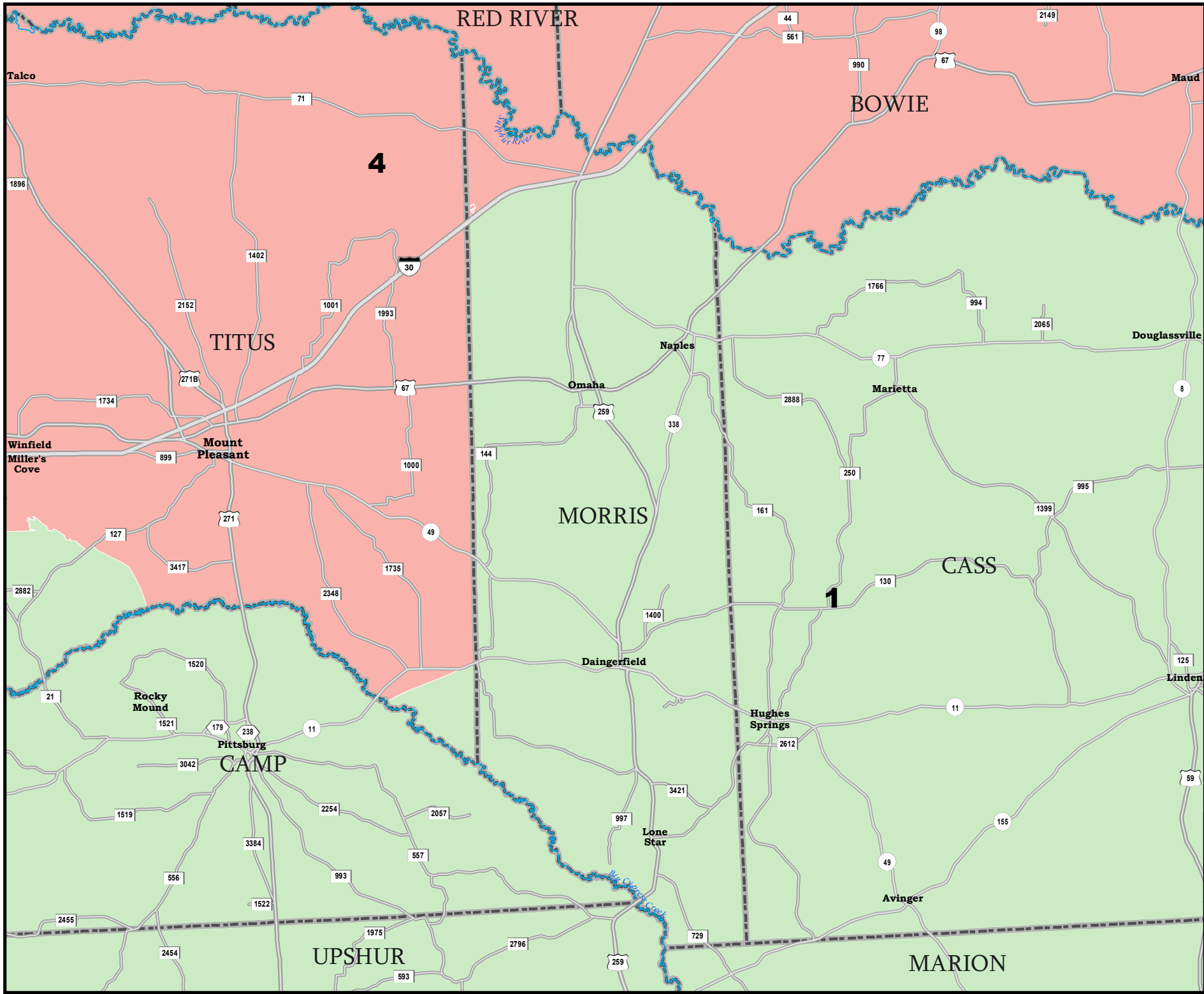


# HUNT COUNTY

## U.S. Congressional Districts Proposed Plan PLANC2141

 COUNTIES  
 **PLANC2141**

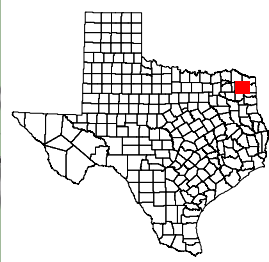




# MORRIS COUNTY

## U.S. Congressional Districts Proposed Plan PLANC2141

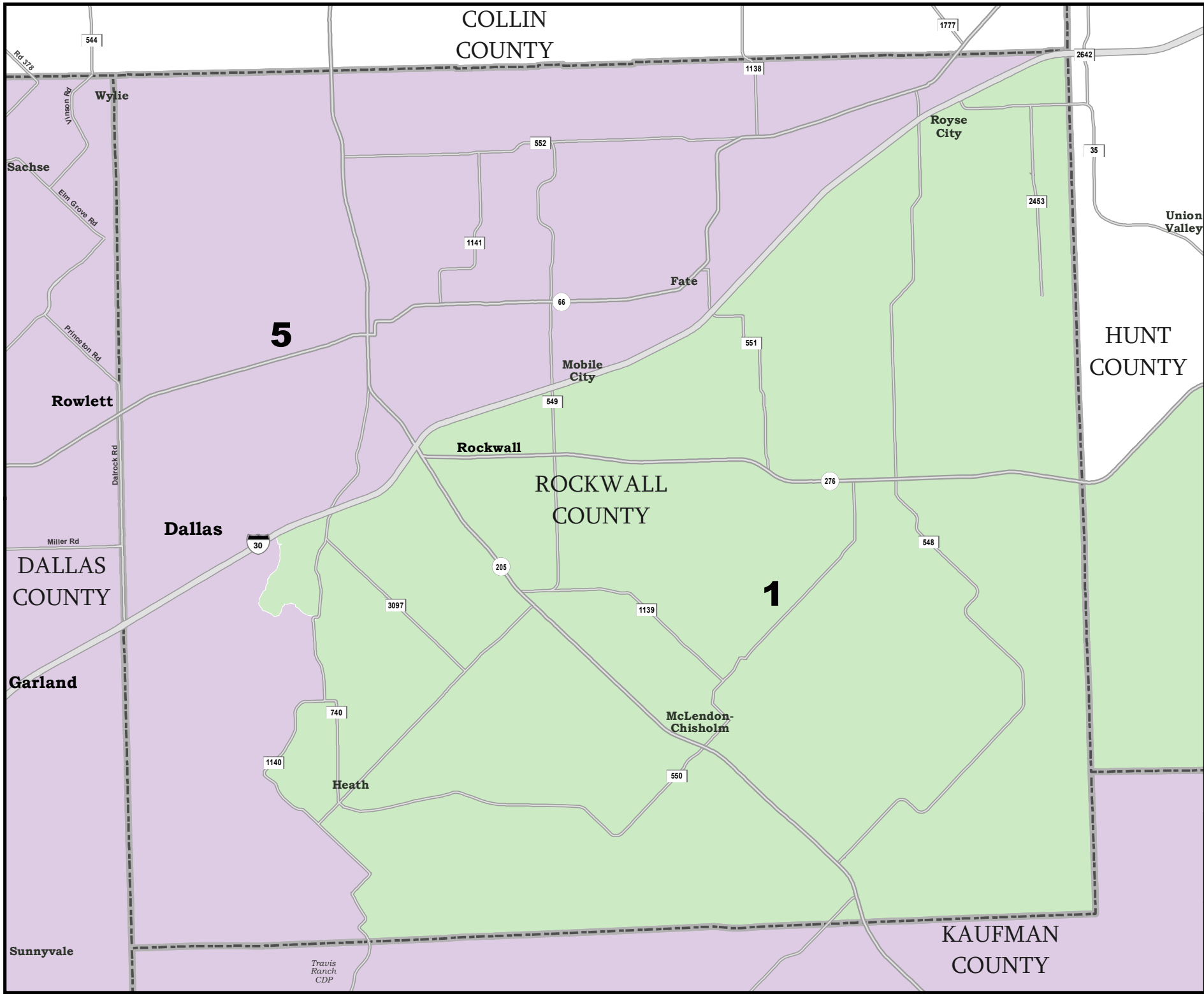
 COUNTIES  
 **PLANC2141**



49909  
 2020 Census  
 PLANC2141 2021-10-13 07:38:14



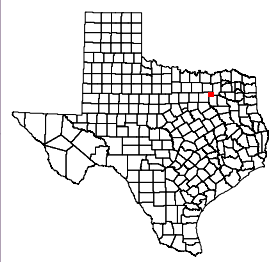
Map ID 5900  
 10/13/21 07:39:29



# ROCKWALL COUNTY

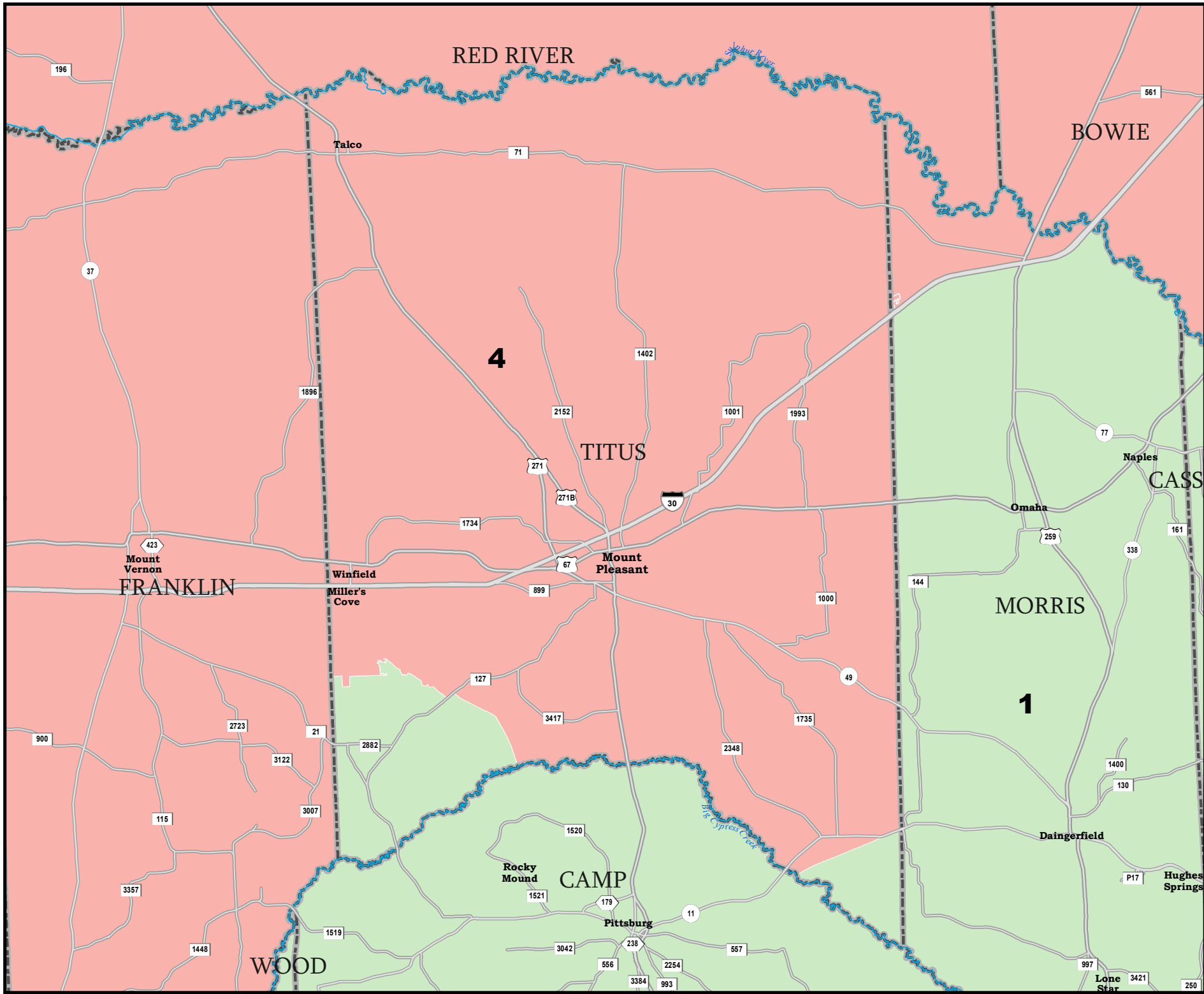
## U.S. Congressional Districts Proposed Plan PLANC2141

 COUNTIES  
 **PLANC2141**



49909  
 2020 Census  
 PLANC2141 2021-10-13 07:38:14

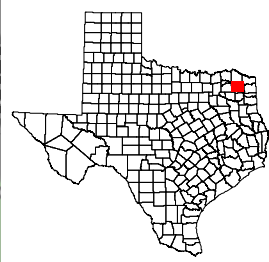




# TITUS COUNTY

## U.S. Congressional Districts Proposed Plan PLANC2141

 COUNTIES  
 **PLANC2141**



49909  
 2020 Census  
 PLANC2141 2021-10-13 07:38:14

Map ID 5900  
 10/13/21 07:39:29

