

District Population Analysis with County Subtotals

CONGRESSIONAL DISTRICTS - PLANC2144

Total State Population	29,145,505
Total Districts Required	38
Ideal District Population	766,987
Unassigned Population	26,844,544
Districts in Plan	3
Unassigned Geography	Yes
Districts Contiguous	Yes

	Population	-----Deviation-----	
		Total	Percent
Plan Overall Range		0	0.00%
Smallest District (2)	766,987	0	0.00%
Largest District (2)	766,987	0	0.00%
Average (mean)	766,987	0	0.00%

PLANC2144

District Population Analysis with County Subtotals

CONGRESSIONAL DISTRICTS - PLAN2144

	Deviation		Total	Anglo	Non-Anglo	Asian	Black	Hispanic	B+H	%Anglo	%Non-Anglo	%Asian	%Black	%Hispanic	%B+H
DISTRICT 2	0	Total:	766,987	376,213	390,774	33,219	104,371	239,749	338,477	49.1	50.9	4.3	13.6	31.3	44.1
	0.00 %	VAP:	565,929	300,241	265,688	23,949	72,894	156,564	226,772	53.1	46.9	4.2	12.9	27.7	40.1
Harris (9%)			427,989	187,481	240,508	22,890	77,027	135,533	208,582	43.8	56.2	5.3	18.0	31.7	48.7
Montgomery (39%)			244,792	122,909	121,883	9,456	17,475	89,877	105,973	50.2	49.8	3.9	7.1	36.7	43.3
Polk (100%)			50,123	34,808	15,315	490	5,422	7,345	12,617	69.4	30.6	1.0	10.8	14.7	25.2
San Jacinto (100%)			27,402	19,170	8,232	176	2,412	4,822	7,143	70.0	30.0	0.6	8.8	17.6	26.1
Walker (22%)			16,681	11,845	4,836	207	2,035	2,172	4,162	71.0	29.0	1.2	12.2	13.0	25.0
DISTRICT 8	0	Total:	766,987	349,902	417,085	62,514	107,707	237,510	338,266	45.6	54.4	8.2	14.0	31.0	44.1
	0.00 %	VAP:	558,132	273,476	284,656	44,524	71,470	159,572	227,615	49.0	51.0	8.0	12.8	28.6	40.8
Harris (8%)			391,336	101,408	289,928	44,269	82,408	163,298	240,481	25.9	74.1	11.3	21.1	41.7	61.5
Montgomery (61%)			375,651	248,494	127,157	18,245	25,299	74,212	97,785	66.2	33.8	4.9	6.7	19.8	26.0
DISTRICT 36	0	Total:	766,987	376,361	390,626	35,418	101,888	241,807	338,673	49.1	50.9	4.6	13.3	31.5	44.2
	0.00 %	VAP:	577,869	304,902	272,967	26,770	72,874	162,106	232,655	52.8	47.2	4.6	12.6	28.1	40.3
Chambers (100%)			46,571	29,858	16,713	879	3,763	10,952	14,512	64.1	35.9	1.9	8.1	23.5	31.2
Hardin (100%)			56,231	46,934	9,297	608	3,559	3,417	6,891	83.5	16.5	1.1	6.3	6.1	12.3
Harris (9%)			435,982	175,913	260,069	29,734	44,431	181,435	222,021	40.3	59.7	6.8	10.2	41.6	50.9
Jasper (100%)			32,980	23,795	9,185	193	5,950	2,198	8,107	72.1	27.9	0.6	18.0	6.7	24.6
Jefferson (28%)			71,580	25,266	46,314	3,074	31,598	11,144	42,237	35.3	64.7	4.3	44.1	15.6	59.0
Liberty (100%)			91,628	50,044	41,584	734	8,052	30,797	38,563	54.6	45.4	0.8	8.8	33.6	42.1
Newton (100%)			12,217	9,249	2,968	50	2,253	344	2,571	75.7	24.3	0.4	18.4	2.8	21.0
Tyler (100%)			19,798	15,302	4,496	146	2,282	1,520	3,771	77.3	22.7	0.7	11.5	7.7	19.0

Population and Voter Data
 with Voter Registration Comparison

CONGRESSIONAL DISTRICTS - PLAN2144

District	Deviation		Population							Total Voter Registration			Non-Suspense Voter Registration				
			Total	%Anglo	%Non-Anglo	%Asian	%Black	%Hispanic	%B+H	General Election	Turnout	Total	SSVR	TO/VR	Total	SSVR	TO/VR
2	0 0.00%	Total:	766,987	49.1	50.9	4.3	13.6	31.3	44.1	2020	308,543	450,442	14.8 %	68.5 %	410,713	15.1 %	75.1 %
		VAP:	565,929	53.1	46.9	4.2	12.9	27.7	40.1	2018	221,460	416,407	13.6 %	53.2 %	373,100	14.0 %	59.4 %
8	0 0.00%	Total:	766,987	45.6	54.4	8.2	14.0	31.0	44.1	2020	327,751	448,277	15.9 %	73.1 %	412,481	16.2 %	79.5 %
		VAP:	558,132	49.0	51.0	8.0	12.8	28.6	40.8	2018	224,292	394,237	15.3 %	56.9 %	354,140	15.7 %	63.3 %
36	0 0.00%	Total:	766,987	49.1	50.9	4.6	13.3	31.5	44.2	2020	302,436	452,151	16.4 %	66.9 %	416,217	16.5 %	72.7 %
		VAP:	577,869	52.8	47.2	4.6	12.6	28.1	40.3	2018	222,789	430,058	15.2 %	51.8 %	390,496	15.4 %	57.1 %

For technical reasons, election results in Texas Legislative Council reports may vary slightly from the official election results. Complete official results for all elections are maintained by the Office of the Texas Secretary of State.
 SSVR = Spanish surname voter registration

Plan Fit Verification
CONGRESSIONAL DISTRICTS
PLANC2144 Compared with PLANC2135

The amendment fits into the base plan.

Incumbents by District

CONGRESSIONAL DISTRICTS - PLANC2144

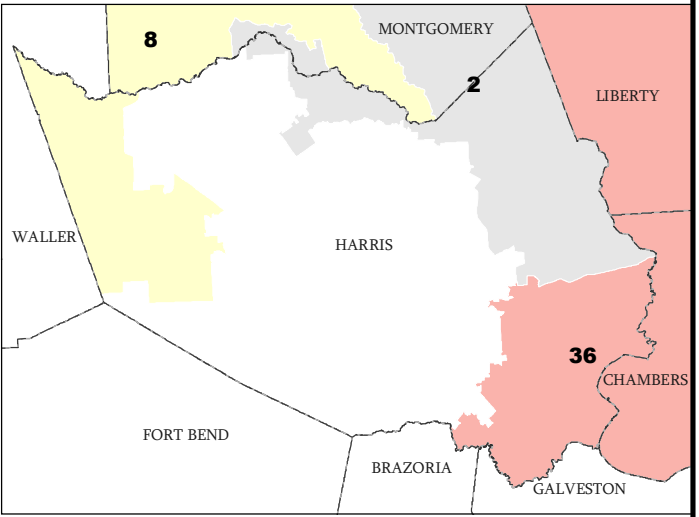
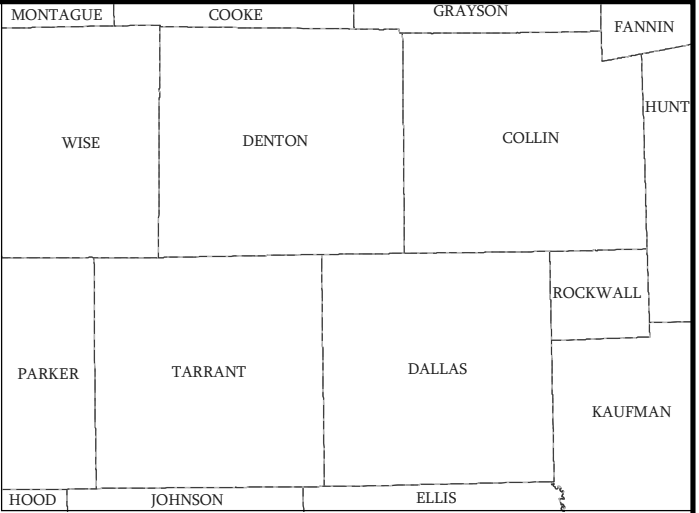
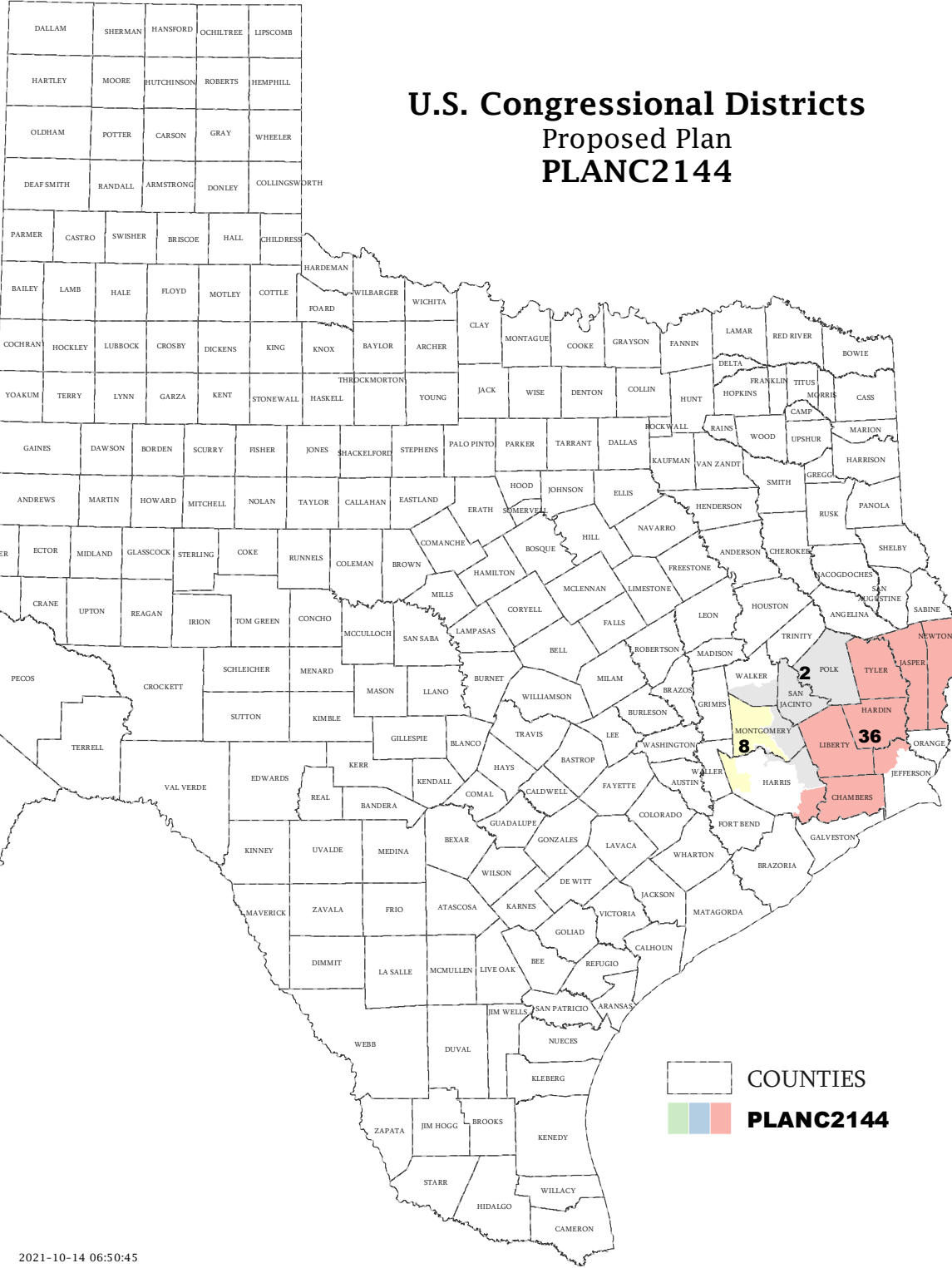
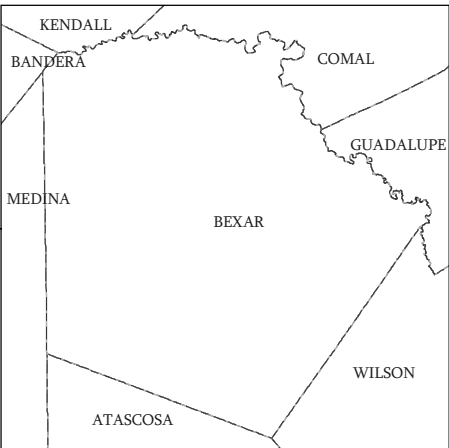
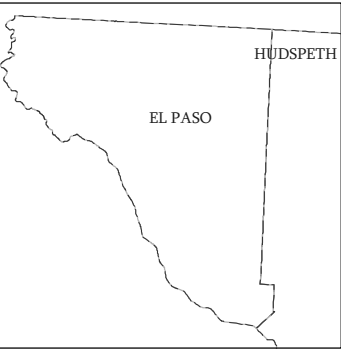
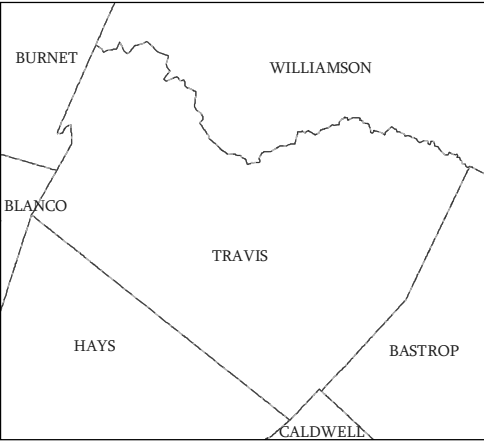
District	Incumbents
2	N/A
8	Brady - R
36	Babin - R

**American Community Survey Special Tabulation
 Using Census and American Community Survey Data
 CONGRESSIONAL DISTRICTS - PLANC2144**

2020 Census			Special Tabulation of Citizen Voting Age Population (CVAP) from the 2015-2019 American Community Survey with Margins of Error												
			CVAP	Hispanic CVAP % Hispanic	Not Hispanic or Latino Citizen Voting Age Population (CVAP)										% Remainder 2 or More Other
% Black Alone	% Black + White	% Black + American Indian			% White Alone	% American Indian Alone	% Asian Alone	% Native Hawaiian Alone	% American Indian + White	% Asian + White					
District	Total	VAP	CVAP	% Hispanic	% Black Alone	% Black + White	% Black + American Indian	% White Alone	% American Indian Alone	% Asian Alone	% Native Hawaiian Alone	% American Indian + White	% Asian + White	% Remainder 2 or More Other	
2	766,987	565,929	481,005 (±6,907)	19.3 (±0.7)	11.9 (±0.6)	0.4 (±0.1)	0.0(±0.1)	64.5 (±0.7)	0.4 (±0.1)	2.4 (±0.2)	0.1 (±0.1)	0.5 (±0.1)	0.3 (±0.1)	0.2 (±0.1)	
8	766,987	558,132	443,415 (±7,286)	20.5 (±0.9)	11.9 (±0.7)	0.2 (±0.1)	0.1(±0.1)	60.3 (±0.8)	0.2 (±0.1)	5.6 (±0.4)	0.1 (±0.1)	0.4 (±0.1)	0.4 (±0.1)	0.2 (±0.1)	
36	766,987	577,869	502,970 (±6,471)	20.7 (±0.7)	13.0 (±0.5)	0.3 (±0.1)	0.1(±0.1)	61.5 (±0.6)	0.3 (±0.1)	3.1 (±0.2)	0.0 (±0.1)	0.5 (±0.1)	0.2 (±0.1)	0.2 (±0.1)	

The American Community Survey provided estimated citizen voting age population (CVAP) data at the block group level in a Special Tabulation. Because the MOE can only be calculated using whole block groups, all block groups with more than 50% of the population in a district are included in the analysis. The Red-118 report provides a summary of the block groups used in the analysis.
 The percent for each CVAP population category is that group's CVAP divided by the CVAP total.
 Numbers in parentheses are margins of error at 90% confidence level.

U.S. Congressional Districts Proposed Plan PLANC2144

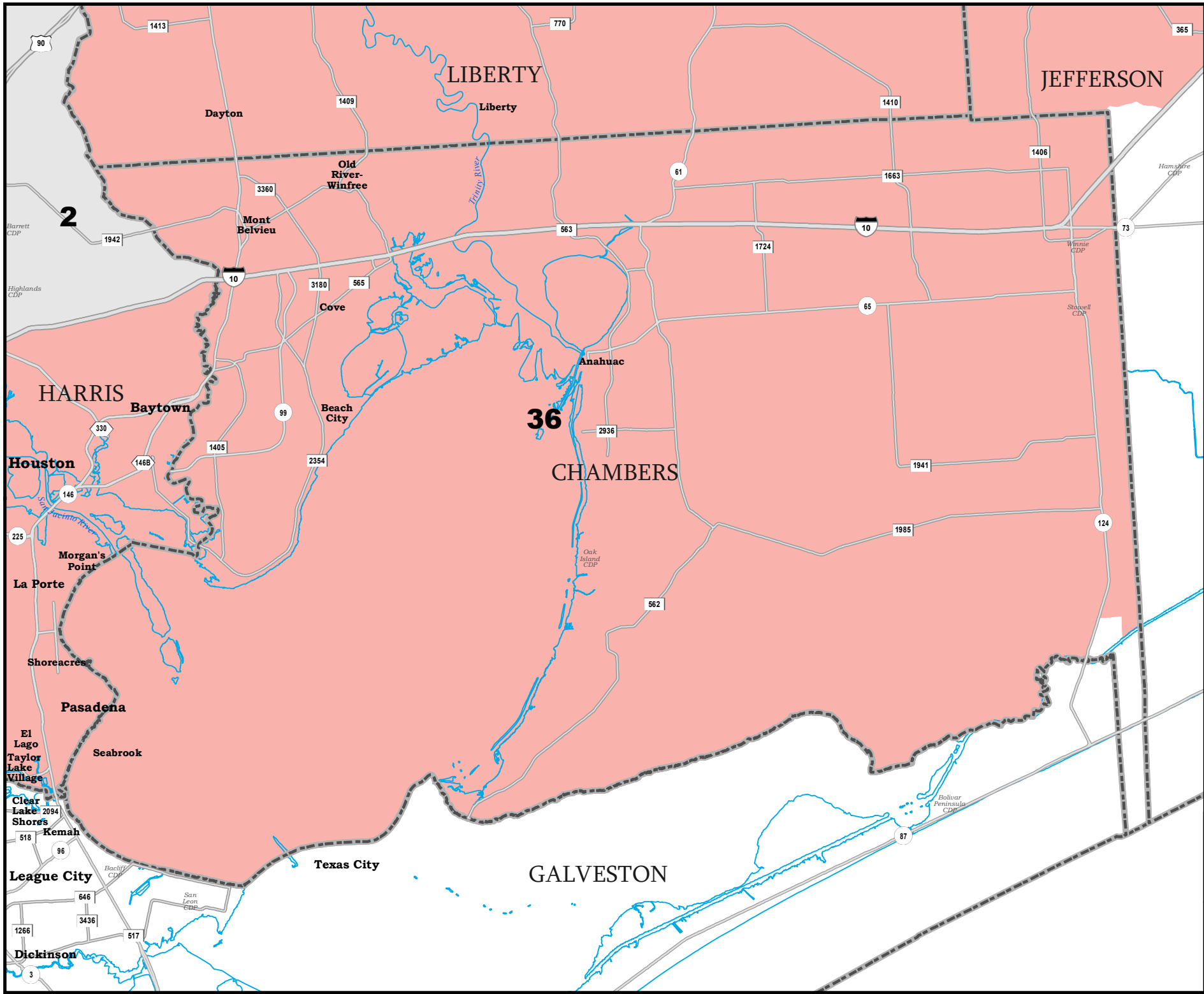


COUNTIES
 PLANC2144

Map ID 5900
10/14/21 06:52:48



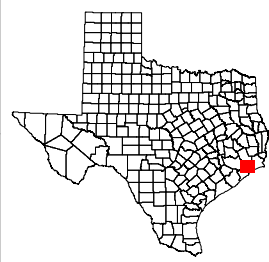
49988
2020 Census
PLANC2144 2021-10-14 06:50:45




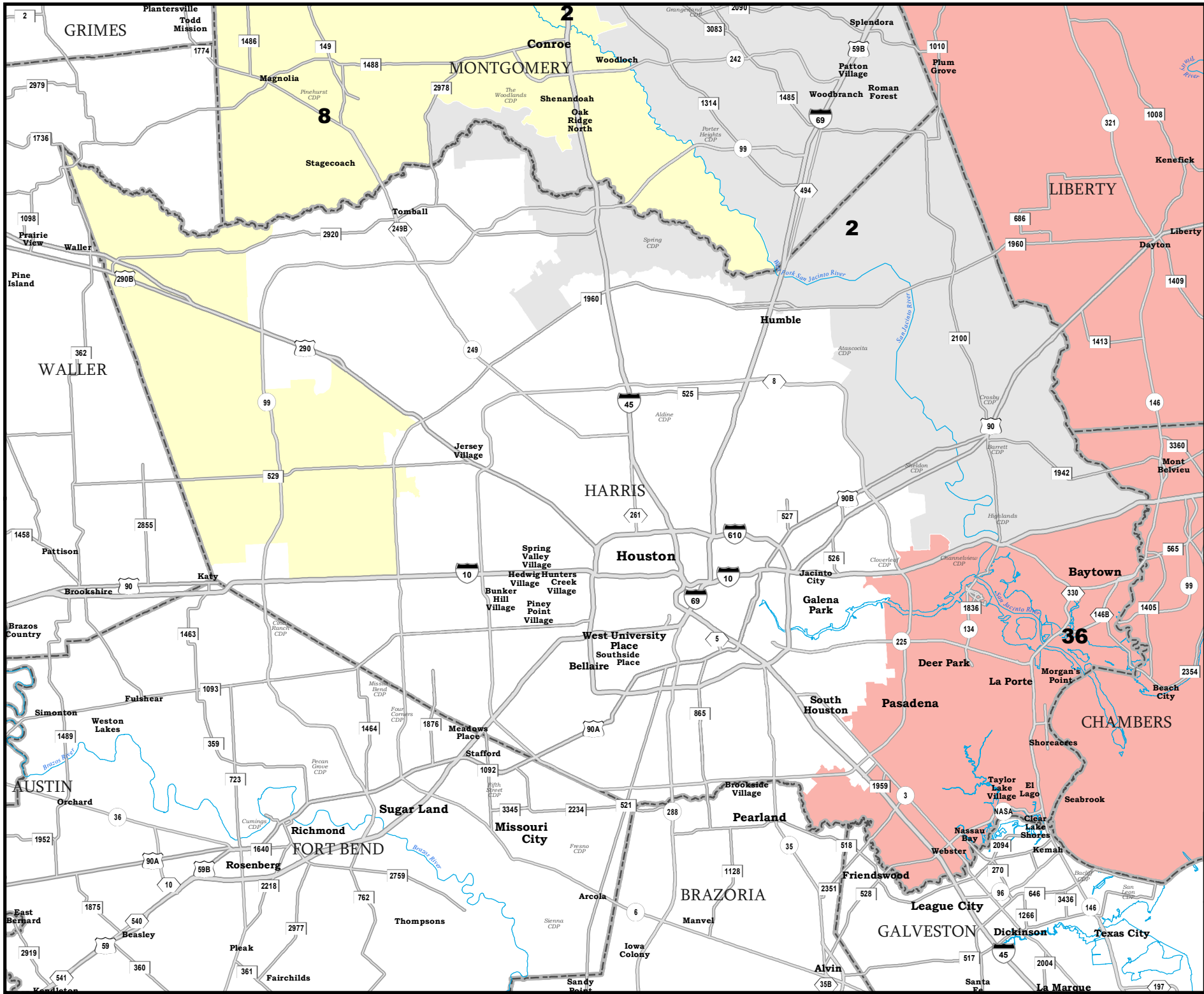
CHAMBERS COUNTY

U.S. Congressional Districts
Proposed Plan
PLANC2144

 COUNTIES
 **PLANC2144**



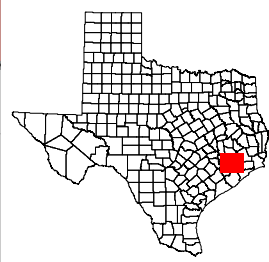
Map ID 5900
 10/14/21 06:52:48
 49988
 2020 Census
 PLANC2144 2021-10-14 06:50:45





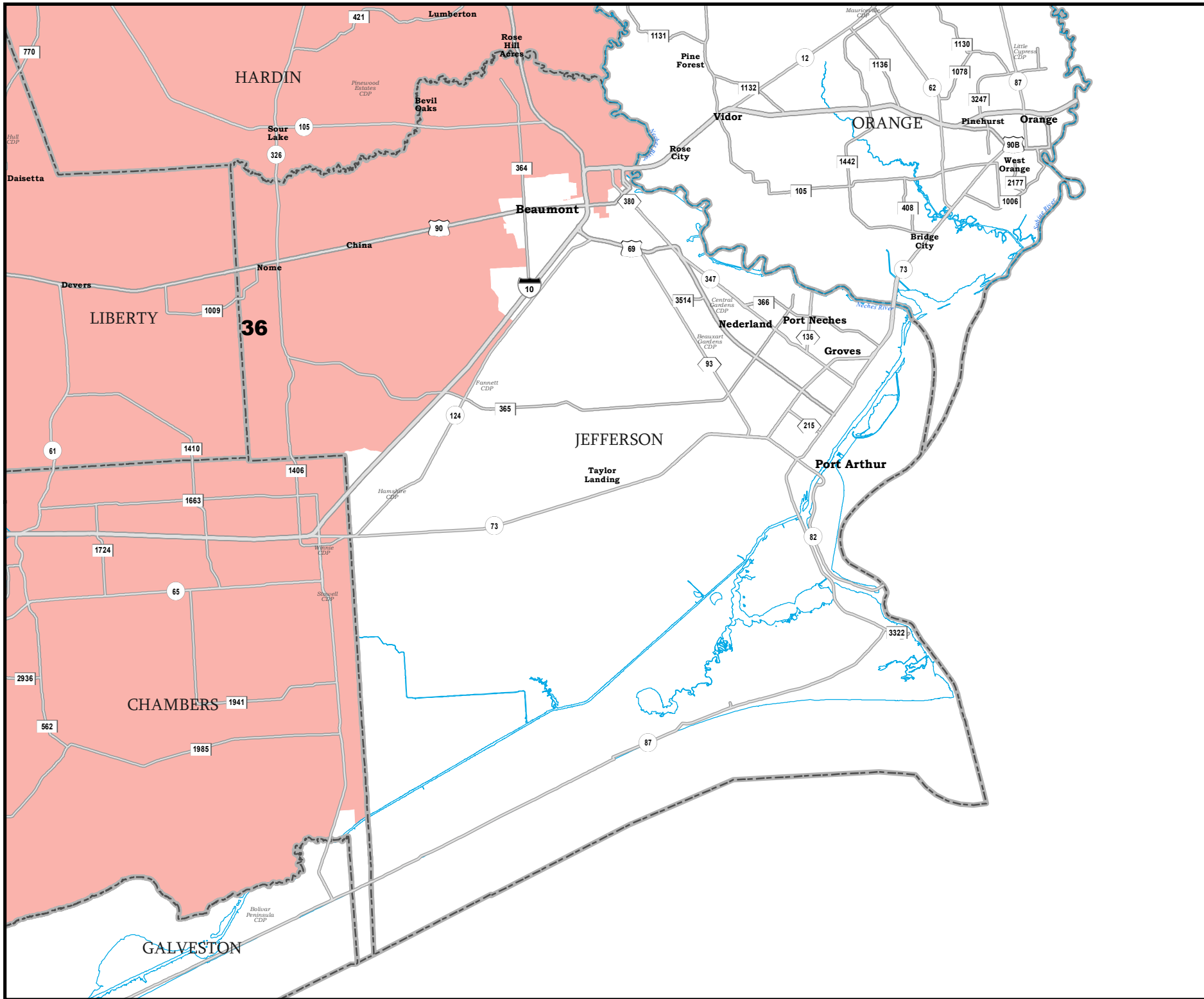
HARRIS COUNTY

U.S. Congressional Districts Proposed Plan PLANC2144

 COUNTIES
 **PLANC2144**



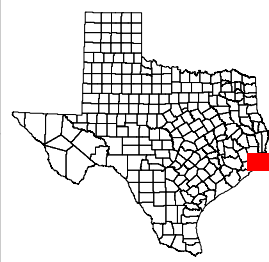
Map ID 5900
 10/14/21 06:52:48
 49988
 2020 Census
 PLANC2144 2021-10-14 06:50:45





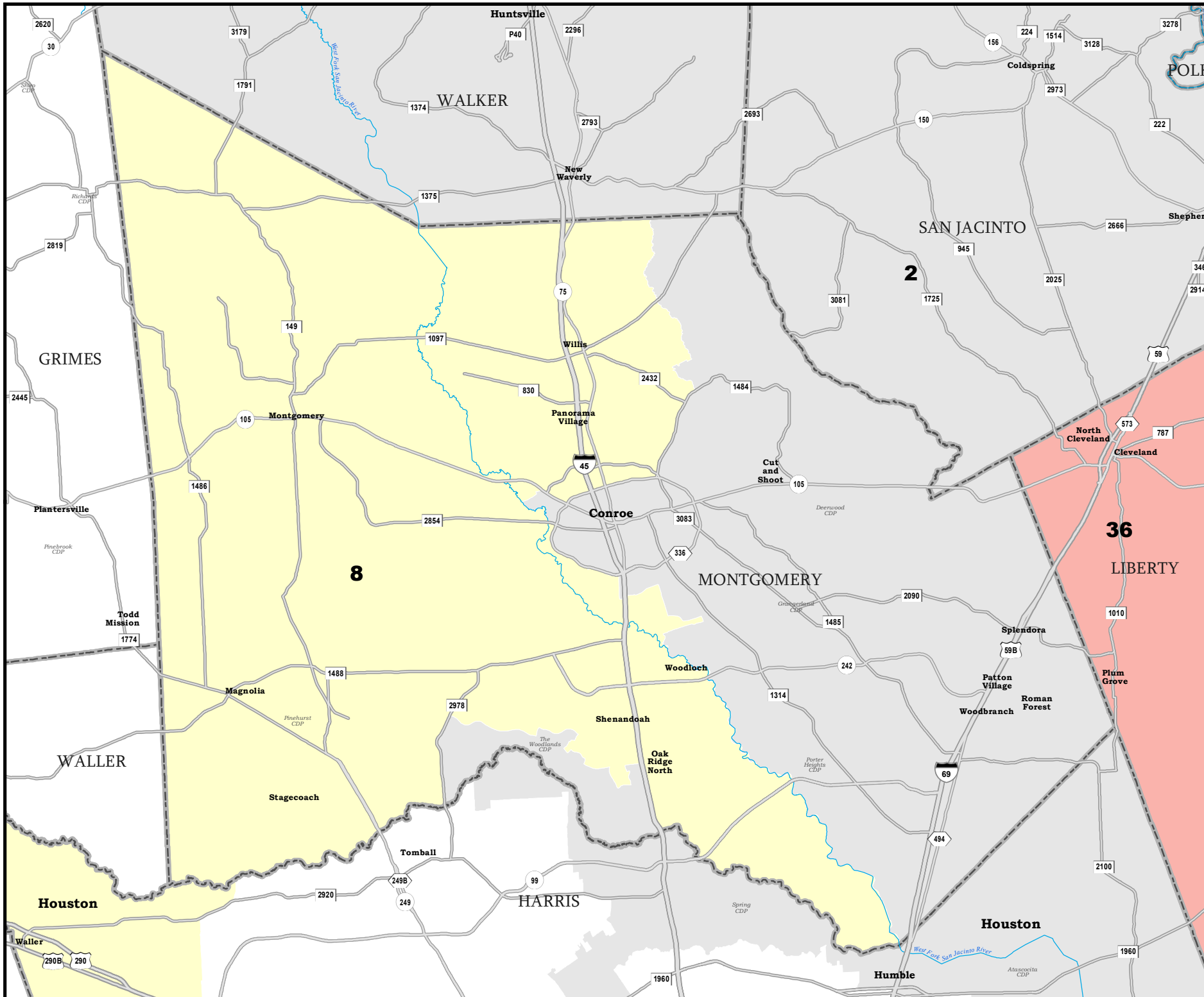
JEFFERSON COUNTY

U.S. Congressional Districts Proposed Plan PLANC2144

 COUNTIES
 **PLANC2144**



Map ID 5900
 10/14/21 06:52:48
 49988
 2020 Census
 PLANC2144 2021-10-14 06:50:45


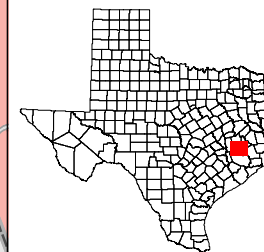


MONTGOMERY COUNTY

U.S. Congressional Districts Proposed Plan PLANC2144

 COUNTIES

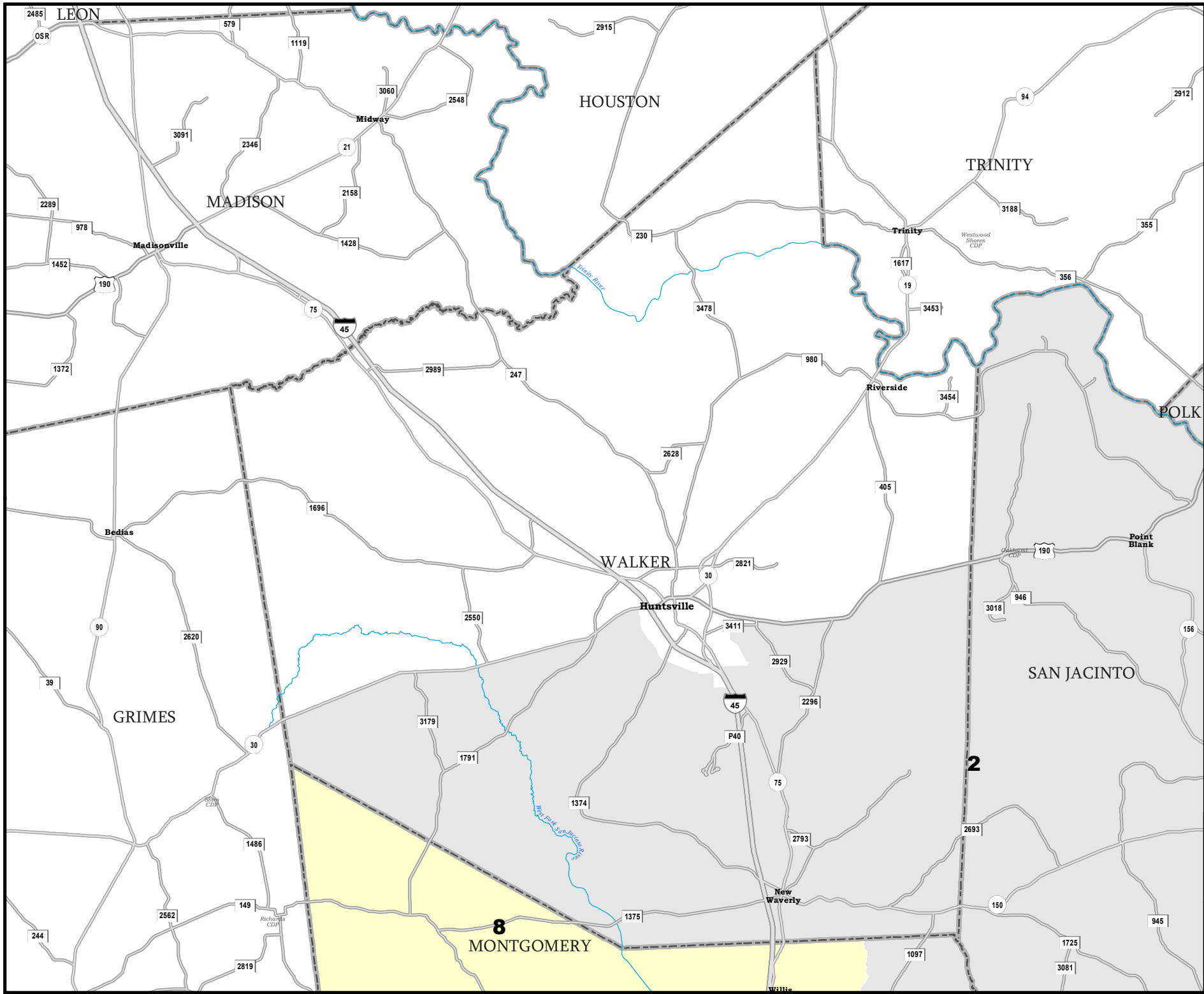
 **PLANC2144**



Map ID 5900
10/14/21 06:52:48



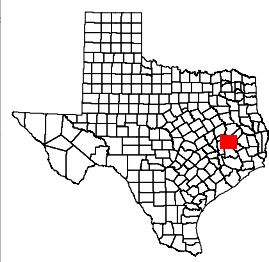
49988
2020 Census
PLANC2144 2021-10-14 06:50:45



WALKER COUNTY

U.S. Congressional Districts Proposed Plan PLANC2144

 COUNTIES
 **PLANC2144**



Map ID 5900
 10/14/21 06:52:48
 49988
 2020 Census
 PLANC2144 2021-10-14 06:50:45
