

District Population Analysis with County Subtotals

CONGRESSIONAL DISTRICTS - PLANC2154

Total State Population	29,145,505
Total Districts Required	38
Ideal District Population	766,987
Unassigned Population	27,611,531
Districts in Plan	2
Unassigned Geography	Yes
Districts Contiguous	Yes

	Population	-----Deviation-----	
		Total	Percent
Plan Overall Range		0	0.00%
Smallest District (1)	766,987	0	0.00%
Largest District (1)	766,987	0	0.00%
Average (mean)	766,987	0	0.00%

PLANC2154

District Population Analysis with County Subtotals

CONGRESSIONAL DISTRICTS - PLAN2154

	Deviation		Total	Anglo	Non-Anglo	Asian	Black	Hispanic	B+H	%Anglo	%Non-Anglo	%Asian	%Black	%Hispanic	%B+H
DISTRICT 1	0	Total:	766,987	460,088	306,899	12,068	147,139	130,082	273,854	60.0	40.0	1.6	19.2	17.0	35.7
	0.00 %	VAP:	585,265	371,950	213,315	8,526	107,096	82,669	188,383	63.6	36.4	1.5	18.3	14.1	32.2
Bowie (91%)			84,255	49,308	34,947	1,422	23,980	7,112	30,769	58.5	41.5	1.7	28.5	8.4	36.5
Camp (100%)			12,464	6,734	5,730	154	2,092	3,222	5,262	54.0	46.0	1.2	16.8	25.9	42.2
Cass (100%)			28,454	21,028	7,426	199	4,941	1,336	6,224	73.9	26.1	0.7	17.4	4.7	21.9
Franklin (100%)			10,359	7,876	2,483	104	534	1,455	1,943	76.0	24.0	1.0	5.2	14.0	18.8
Gregg (100%)			124,239	68,050	56,189	2,137	27,498	24,040	50,879	54.8	45.2	1.7	22.1	19.3	41.0
Harrison (100%)			68,839	42,039	26,800	718	14,553	9,839	24,107	61.1	38.9	1.0	21.1	14.3	35.0
Marion (100%)			9,725	6,869	2,856	96	2,026	389	2,380	70.6	29.4	1.0	20.8	4.0	24.5
Morris (100%)			11,973	7,716	4,257	98	2,705	1,182	3,850	64.4	35.6	0.8	22.6	9.9	32.2
Panola (100%)			22,491	16,098	6,393	178	3,509	2,190	5,633	71.6	28.4	0.8	15.6	9.7	25.0
Red River (75%)			8,638	5,987	2,651	77	1,693	635	2,286	69.3	30.7	0.9	19.6	7.4	26.5
Rusk (100%)			52,214	32,022	20,192	349	9,032	9,579	18,445	61.3	38.7	0.7	17.3	18.3	35.3
Sabine (100%)			9,894	8,307	1,587	82	852	393	1,200	84.0	16.0	0.8	8.6	4.0	12.1
San Augustine (100%)			7,918	5,270	2,648	64	1,897	639	2,487	66.6	33.4	0.8	24.0	8.1	31.4
Shelby (100%)			24,022	14,416	9,606	458	4,095	4,685	8,702	60.0	40.0	1.9	17.0	19.5	36.2
Smith (100%)			233,479	134,452	99,027	5,402	41,819	47,281	87,936	57.6	42.4	2.3	17.9	20.3	37.7
Titus (100%)			31,247	13,410	17,837	329	3,347	13,680	16,829	42.9	57.1	1.1	10.7	43.8	53.9
Upshur (65%)			26,776	20,506	6,270	201	2,566	2,425	4,922	76.6	23.4	0.8	9.6	9.1	18.4
DISTRICT 4	0	Total:	766,987	451,457	315,530	102,801	81,550	109,090	187,222	58.9	41.1	13.4	10.6	14.2	24.4
	0.00 %	VAP:	575,932	358,874	217,058	71,229	56,708	71,426	126,642	62.3	37.7	12.4	9.8	12.4	22.0
Bowie (9%)			8,638	6,547	2,091	84	1,208	490	1,682	75.8	24.2	1.0	14.0	5.7	19.5
Collin (29%)			307,284	136,375	170,909	82,102	41,225	42,655	82,230	44.4	55.6	26.7	13.4	13.9	26.8
Delta (100%)			5,230	4,189	1,041	63	402	394	765	80.1	19.9	1.2	7.7	7.5	14.6
Denton (6%)			51,193	27,361	23,832	11,709	5,538	5,683	10,940	53.4	46.6	22.9	10.8	11.1	21.4
Fannin (100%)			35,662	27,042	8,620	319	2,628	4,218	6,760	75.8	24.2	0.9	7.4	11.8	19.0
Grayson (100%)			135,543	95,211	40,332	2,686	9,856	20,868	30,196	70.2	29.8	2.0	7.3	15.4	22.3
Hopkins (100%)			36,787	25,976	10,811	420	2,847	6,484	9,237	70.6	29.4	1.1	7.7	17.6	25.1
Hunt (14%)			13,630	10,562	3,068	117	202	2,086	2,263	77.5	22.5	0.9	1.5	15.3	16.6
Lamar (100%)			50,088	35,354	14,734	645	7,310	4,412	11,570	70.6	29.4	1.3	14.6	8.8	23.1
Rains (100%)			12,164	10,130	2,034	103	360	1,109	1,446	83.3	16.7	0.8	3.0	9.1	11.9
Red River (25%)			2,949	2,512	437	20	202	131	322	85.2	14.8	0.7	6.8	4.4	10.9
Rockwall (100%)			107,819	70,198	37,621	4,533	9,772	20,560	29,811	65.1	34.9	4.2	9.1	19.1	27.6

Population and Voter Data
 with Voter Registration Comparison

CONGRESSIONAL DISTRICTS - PLAN2154

District	Deviation		Population								Total Voter Registration			Non-Suspense Voter Registration			
			Total	%Anglo	%Non-Anglo	%Asian	%Black	%Hispanic	%B+H	General Election	Turnout	Total	SSVR	TO/VR	Total	SSVR	TO/VR
1	0 0.00%	Total:	766,987	60.0	40.0	1.6	19.2	17.0	35.7	2020	327,136	492,448	6.0 %	66.4 %	446,300	6.0 %	73.3 %
		VAP:	585,265	63.6	36.4	1.5	18.3	14.1	32.2	2018	248,407	469,441	5.4 %	52.9 %	424,955	5.5 %	58.5 %
4	0 0.00%	Total:	766,987	58.9	41.1	13.4	10.6	14.2	24.4	2020	343,817	474,212	6.4 %	72.5 %	429,920	6.4 %	80.0 %
		VAP:	575,932	62.3	37.7	12.4	9.8	12.4	22.0	2018	249,936	433,436	6.0 %	57.7 %	387,378	6.0 %	64.5 %

Plan Fit Verification
CONGRESSIONAL DISTRICTS
PLANC2154 Compared with PLANC2135

The amendment fits into the base plan.

Incumbents by District

CONGRESSIONAL DISTRICTS - PLANC2154

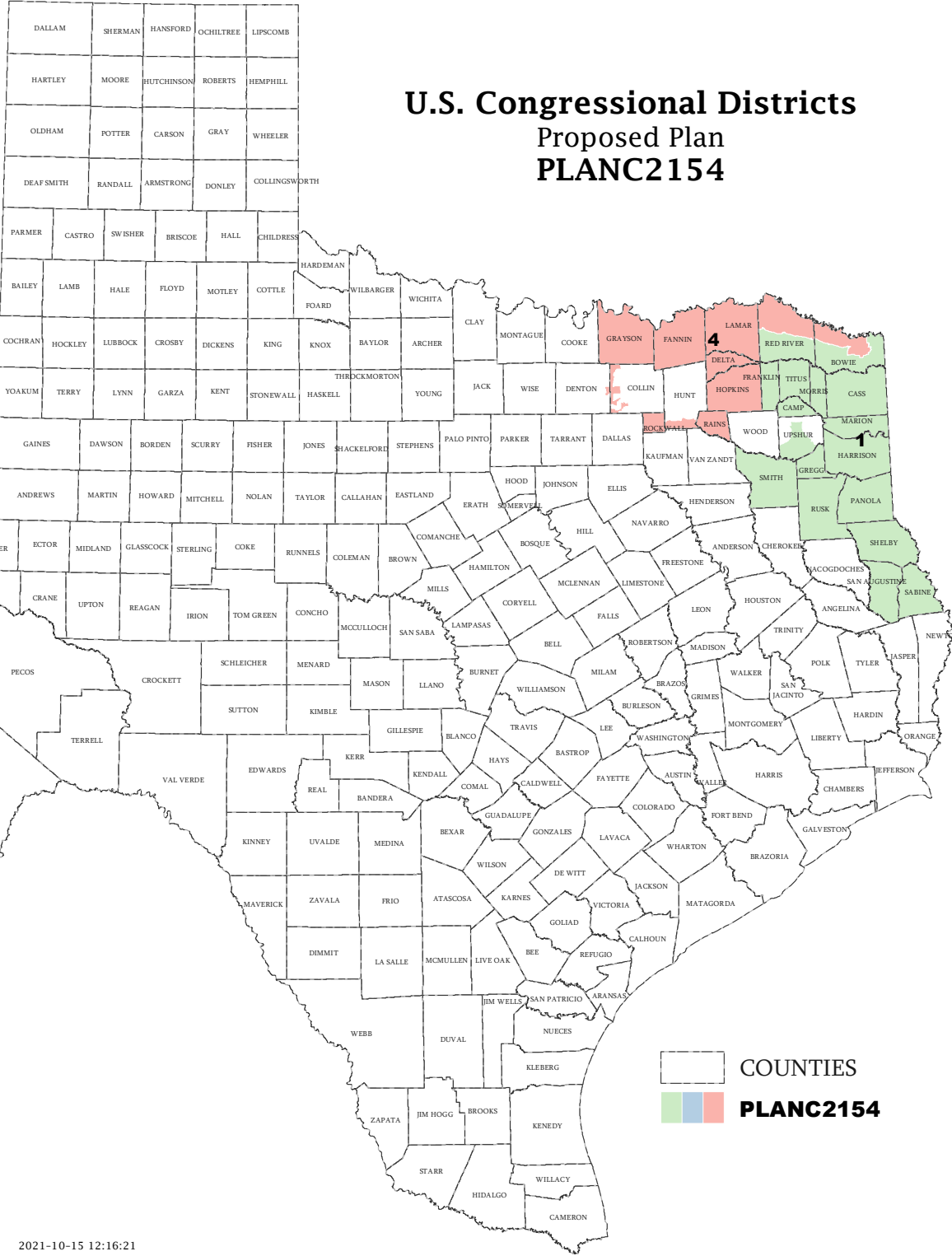
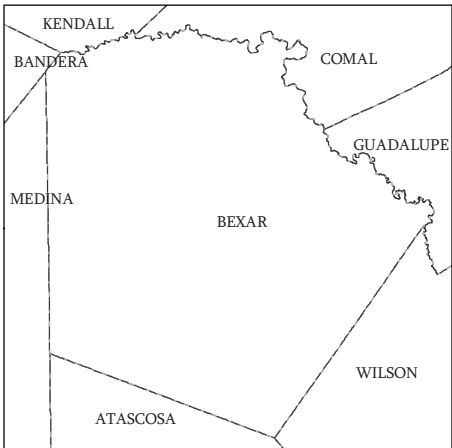
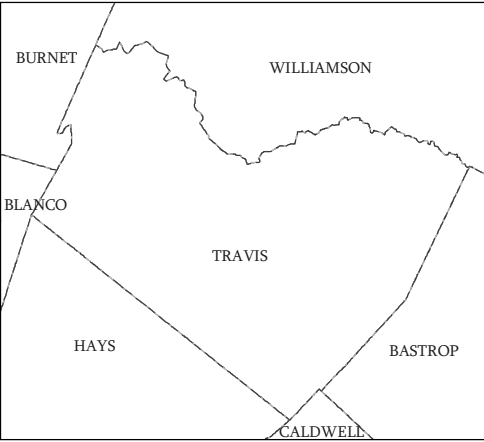
District	Incumbents
1	Gohmert - R
4	Fallon - R

American Community Survey Special Tabulation
 Using Census and American Community Survey Data
CONGRESSIONAL DISTRICTS - PLANC2154

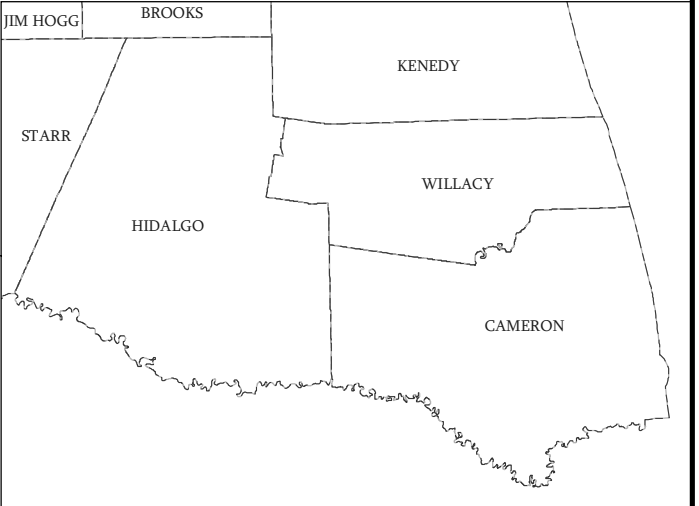
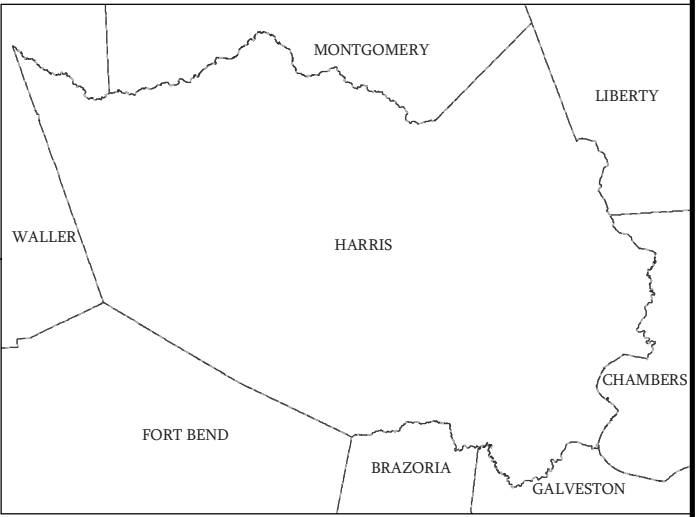
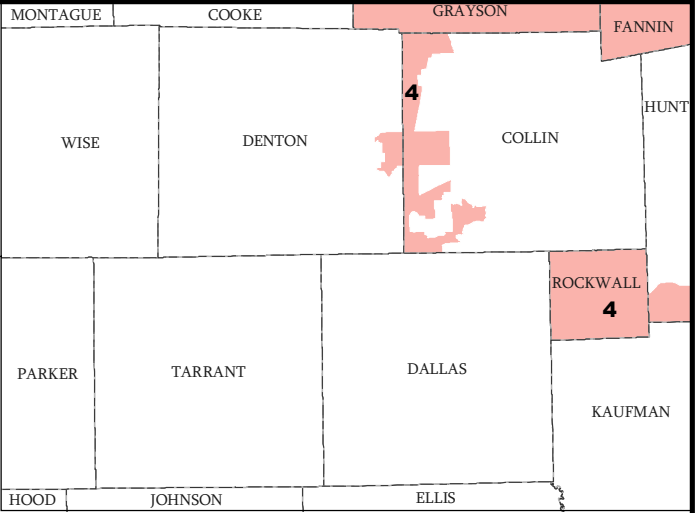
2020 Census			Special Tabulation of Citizen Voting Age Population (CVAP) from the 2015-2019 American Community Survey with Margins of Error												
District	Total	VAP	CVAP	Hispanic CVAP % Hispanic	Not Hispanic or Latino Citizen Voting Age Population (CVAP)										% Remainder 2 or More Other
					% Black Alone	% Black + White	% Black + American Indian	% White Alone	% American Indian Alone	% Asian Alone	% Native Hawaiian Alone	% American Indian + White	% Asian + White		
1	766,987	585,265	548,500 (±6,663)	8.4 (±0.4)	19.3 (±0.6)	0.2 (±0.1)	0.1(±0.1)	70.1 (±0.5)	0.3 (±0.1)	0.8 (±0.1)	0.1 (±0.1)	0.5 (±0.1)	0.1 (±0.1)	0.1 (±0.1)	
4	766,987	575,932	487,555 (±5,327)	8.9 (±0.4)	8.9 (±0.4)	0.4 (±0.1)	0.1(±0.1)	73.9 (±0.5)	0.6 (±0.1)	5.7 (±0.3)	0.1 (±0.1)	0.9 (±0.1)	0.4 (±0.1)	0.2 (±0.1)	

The American Community Survey provided estimated citizen voting age population (CVAP) data at the block group level in a Special Tabulation. Because the MOE can only be calculated using whole block groups, all block groups with more than 50% of the population in a district are included in the analysis. The Red-118 report provides a summary of the block groups used in the analysis.
 The percent for each CVAP population category is that group's CVAP divided by the CVAP total.
 Numbers in parentheses are margins of error at 90% confidence level.

U.S. Congressional Districts Proposed Plan PLANC2154

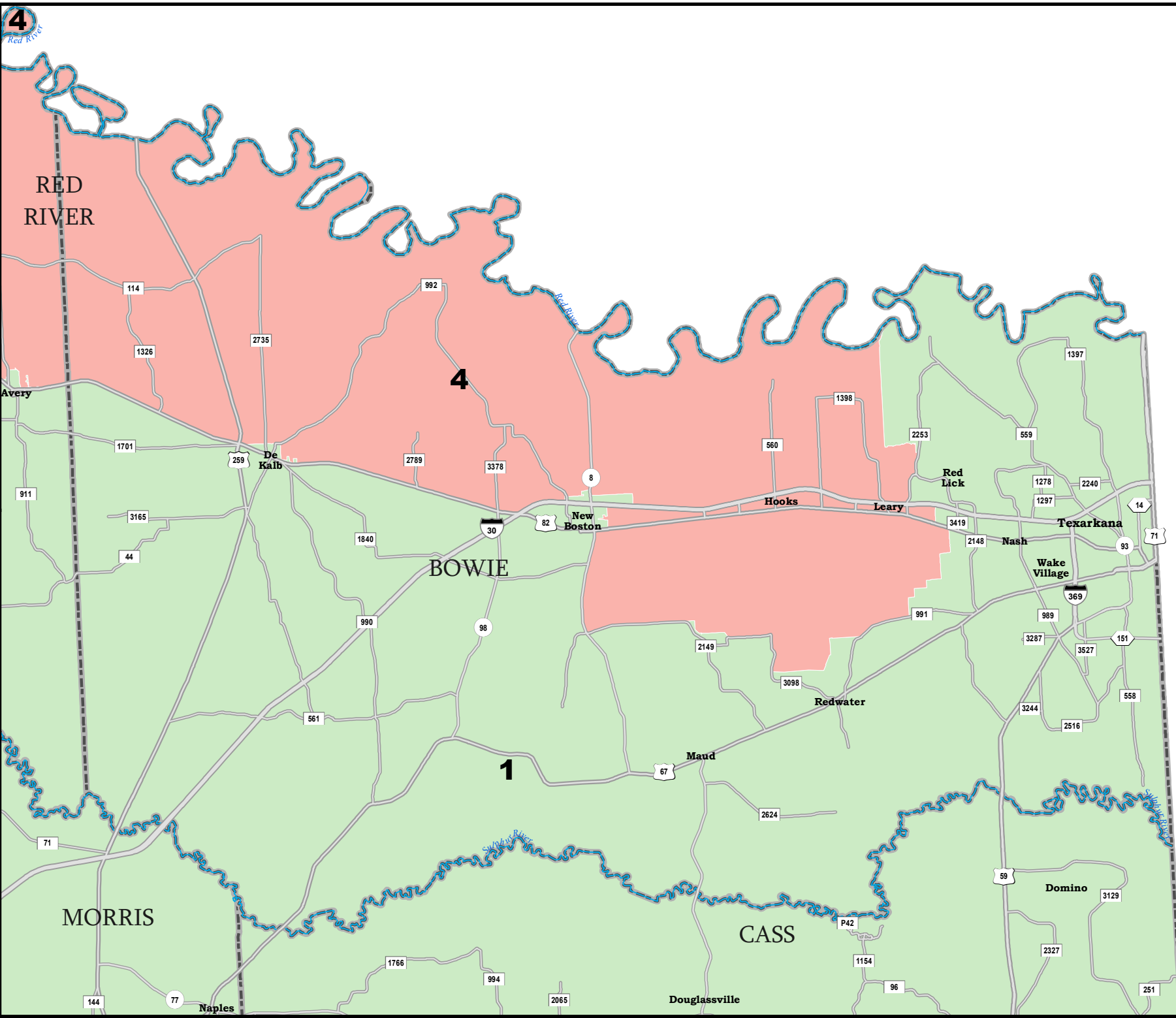


COUNTIES
 PLANC2154



Map ID 5900
10/15/21 12:18:13

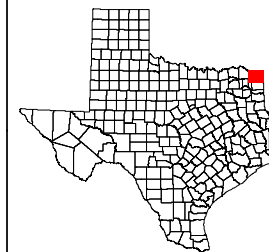




BOWIE COUNTY

U.S. Congressional Districts
Proposed Plan
PLANC2154

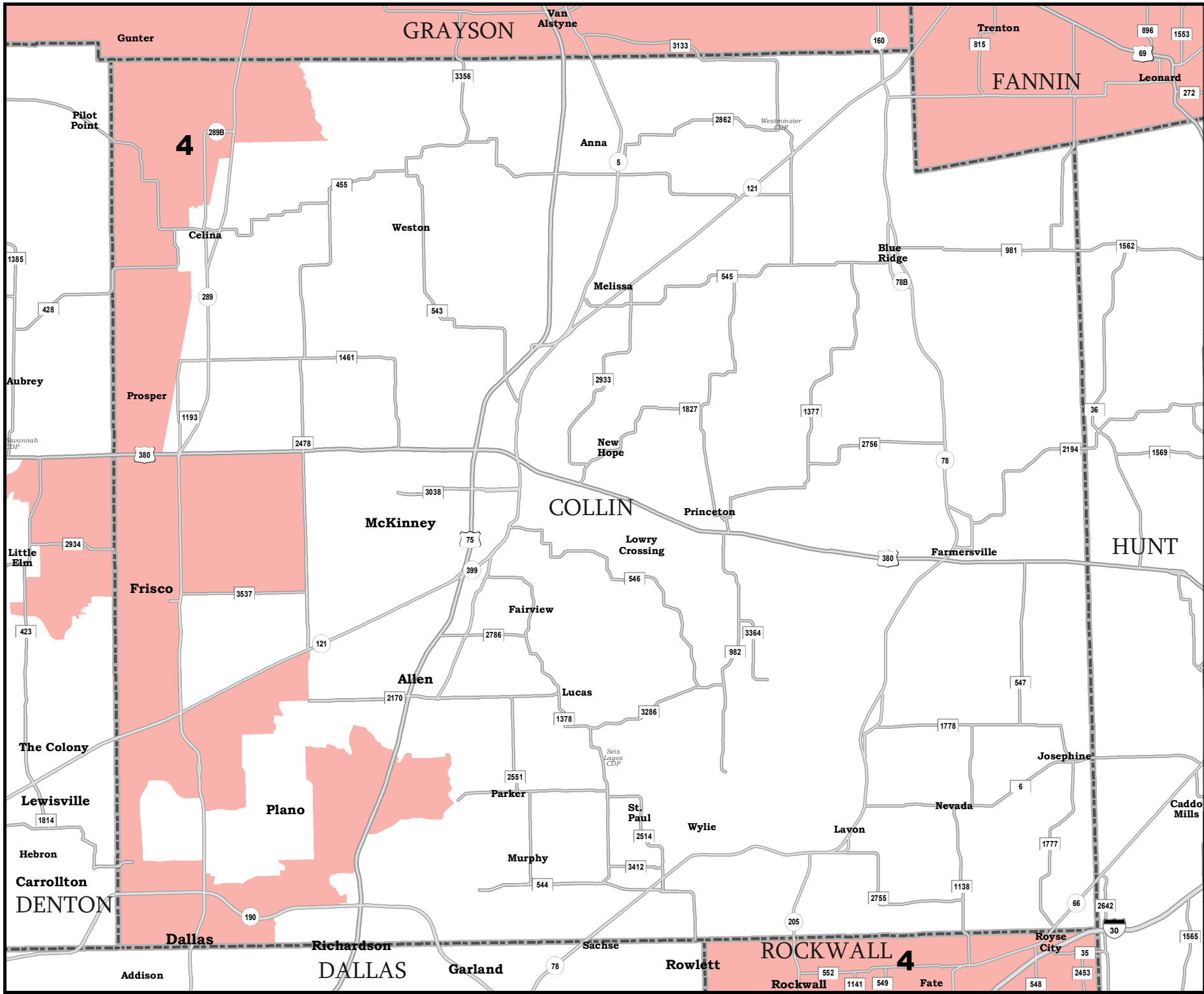
 COUNTIES
 **PLANC2154**



50081
2020 Census
PLANC2154 2021-10-15 12:16:21

Map ID 5900
10/15/21 12:18:13



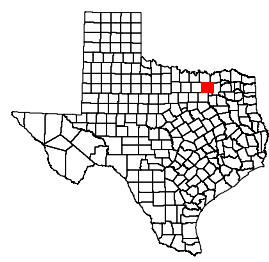



COLLIN COUNTY

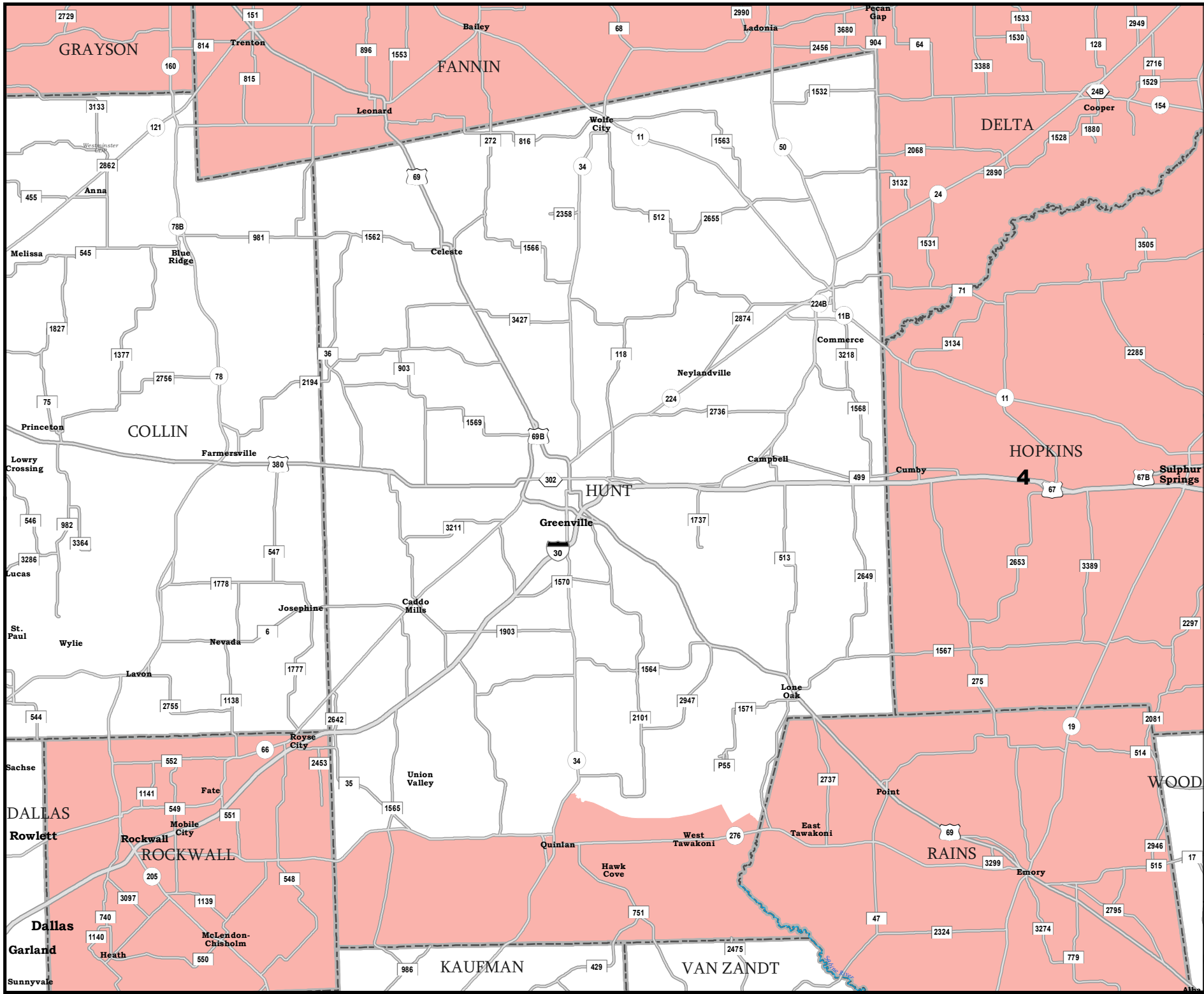
U.S. Congressional Districts Proposed Plan PLANC2154


 COUNTIES

PLANC2154



Map ID 5900
 10/15/21 12:18:13

 50081
 2020 Census
 PLANC2154 2021-10-15 12:16:21



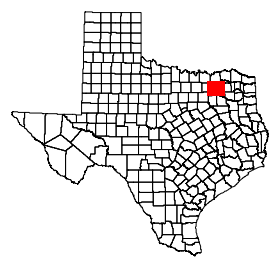
HUNT COUNTY

U.S. Congressional Districts

Proposed Plan

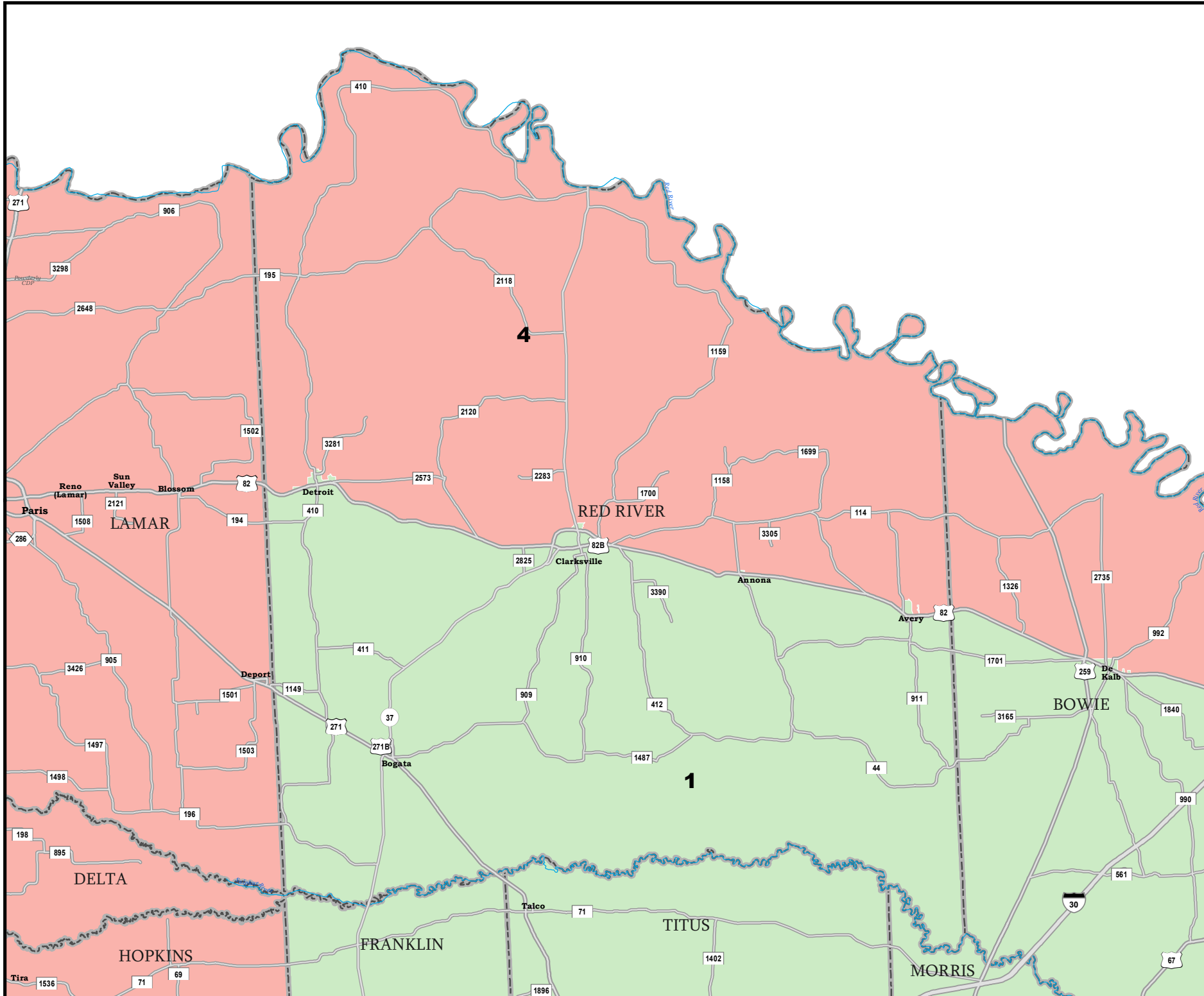
PLANC2154

 COUNTIES
 **PLANC2154**



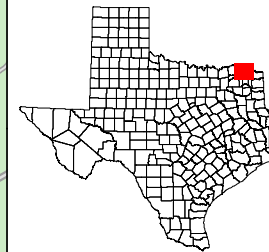
RED RIVER COUNTY

U.S. Congressional Districts Proposed Plan PLANC2154



--- COUNTIES

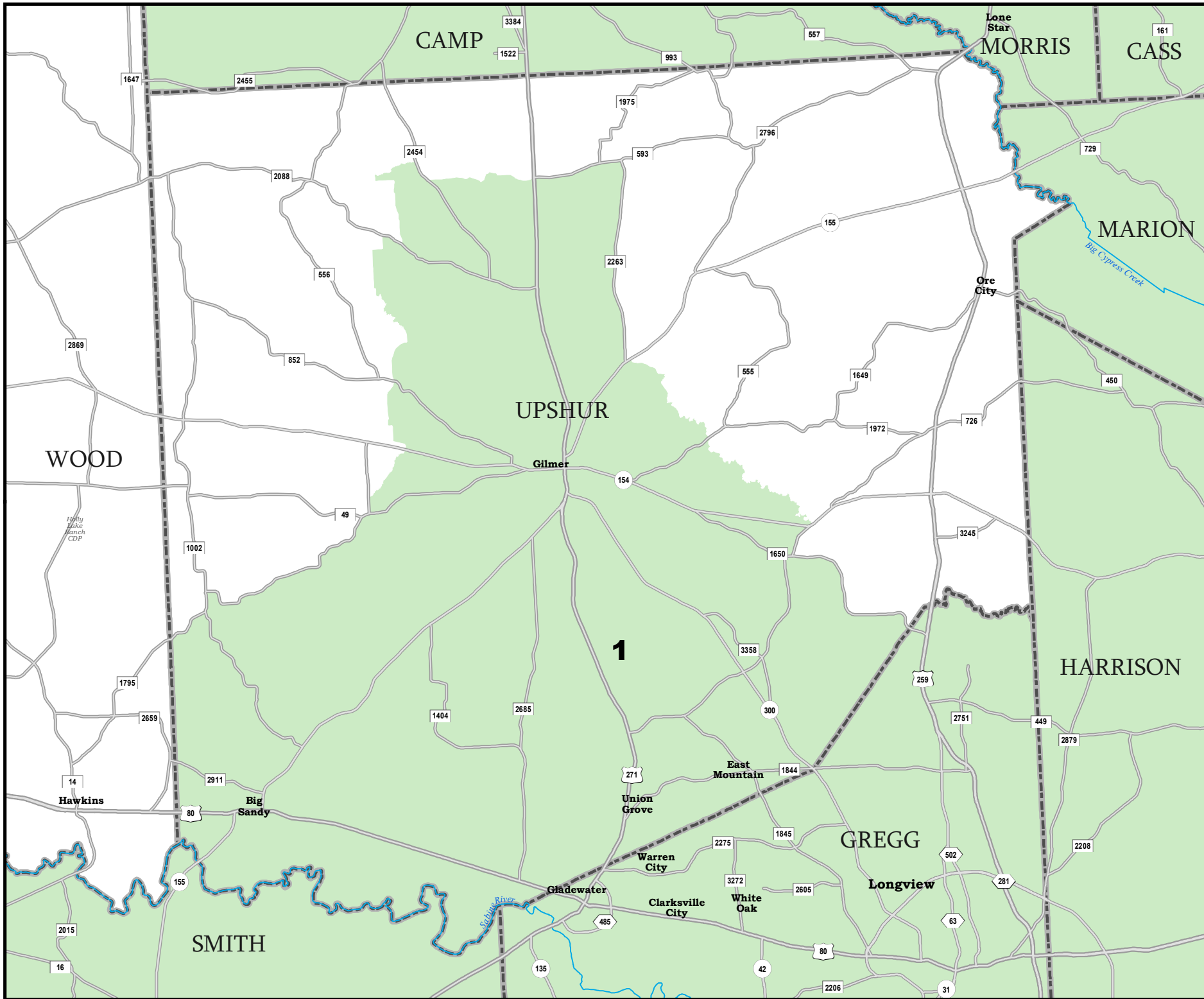
■ PLANC2154



Map ID 5900
10/15/21 12:18:13

50081
2020 Census
PLANC2154 2021-10-15 12:16:21





UPSHUR COUNTY

U.S. Congressional Districts Proposed Plan PLANC2154

 COUNTIES
 **PLANC2154**

