

District Population Analysis with County Subtotals

CONGRESSIONAL DISTRICTS - PLANC2185

Total State Population	29,145,505
Total Districts Required	38
Ideal District Population	766,987
Unassigned Population	27,611,531
Districts in Plan	2
Unassigned Geography	Yes
Districts Contiguous	No

	Population	-----Deviation-----	
		Total	Percent
Plan Overall Range		0	0.00%
Smallest District (2)	766,987	0	0.00%
Largest District (2)	766,987	0	0.00%
Average (mean)	766,987	0	0.00%

PLANC2185

District Population Analysis with County Subtotals

CONGRESSIONAL DISTRICTS - PLANC2185

	Deviation		Total	Anglo	Non-Anglo	Asian	Black	Hispanic	B+H	%Anglo	%Non-Anglo	%Asian	%Black	%Hispanic	%B+H
DISTRICT 2	0	Total:	766,987	378,509	388,478	43,253	100,382	232,511	327,045	49.4	50.6	5.6	13.1	30.3	42.6
	0.00 %	VAP:	557,917	296,409	261,508	30,513	68,462	151,304	217,005	53.1	46.9	5.5	12.3	27.1	38.9
Harris (9%)			427,989	185,461	242,528	22,075	75,049	140,312	211,443	43.3	56.7	5.2	17.5	32.8	49.4
Montgomery (55%)			338,998	193,048	145,950	21,178	25,333	92,199	115,602	56.9	43.1	6.2	7.5	27.2	34.1
DISTRICT 8	0	Total:	766,987	345,586	421,401	51,665	109,718	249,527	352,559	45.1	54.9	6.7	14.3	32.5	46.0
	0.00 %	VAP:	565,897	276,028	289,869	37,361	74,409	167,949	239,030	48.8	51.2	6.6	13.1	29.7	42.2
Harris (8%)			391,336	101,408	289,928	44,269	82,408	163,298	240,481	25.9	74.1	11.3	21.1	41.7	61.5
Montgomery (45%)			281,445	178,355	103,090	6,523	17,441	71,890	88,156	63.4	36.6	2.3	6.2	25.5	31.3
Polk (100%)			50,123	34,808	15,315	490	5,422	7,345	12,617	69.4	30.6	1.0	10.8	14.7	25.2
San Jacinto (100%)			27,402	19,170	8,232	176	2,412	4,822	7,143	70.0	30.0	0.6	8.8	17.6	26.1
Walker (22%)			16,681	11,845	4,836	207	2,035	2,172	4,162	71.0	29.0	1.2	12.2	13.0	25.0

Population and Voter Data
 with Voter Registration Comparison

CONGRESSIONAL DISTRICTS - PLAN2185

District	Deviation		Population							Total Voter Registration			Non-Suspense Voter Registration				
			Total	%Anglo	%Non-Anglo	%Asian	%Black	%Hispanic	%B+H	General Election	Turnout	Total	SSVR	TO/VR	Total	SSVR	TO/VR
2	0 0.00%	Total:	766,987	49.4	50.6	5.6	13.1	30.3	42.6	2020	321,243	452,256	14.8 %	71.0 %	411,671	15.1 %	78.0 %
		VAP:	557,917	53.1	46.9	5.5	12.3	27.1	38.9	2018	230,728	413,875	13.7 %	55.7 %	369,124	14.1 %	62.5 %
8	0 0.00%	Total:	766,987	45.1	54.9	6.7	14.3	32.5	46.0	2020	312,310	443,459	16.0 %	70.4 %	408,428	16.3 %	76.5 %
		VAP:	565,897	48.8	51.2	6.6	13.1	29.7	42.2	2018	213,115	394,298	15.3 %	54.0 %	355,639	15.7 %	59.9 %

For technical reasons, election results in Texas Legislative Council reports may vary slightly from the official election results. Complete official results for all elections are maintained by the Office of the Texas Secretary of State.
 SSVR = Spanish surname voter registration

Plan Fit Verification
CONGRESSIONAL DISTRICTS
PLANC2185 Compared with PLANC2135

The amendment fits into the base plan.

Incumbents by District

CONGRESSIONAL DISTRICTS - PLANC2185

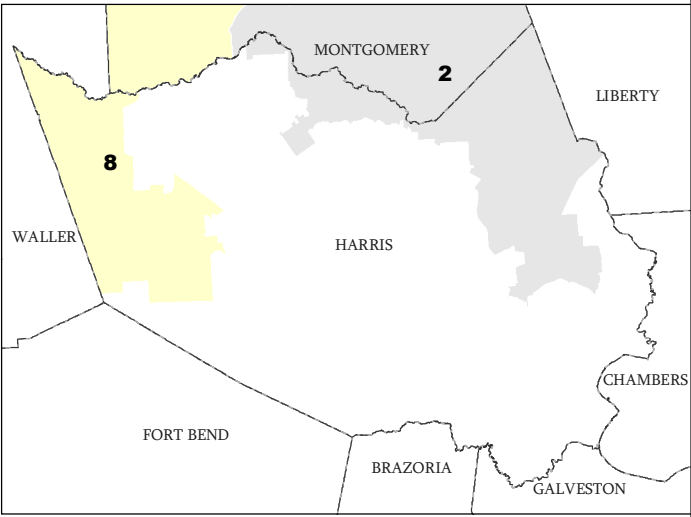
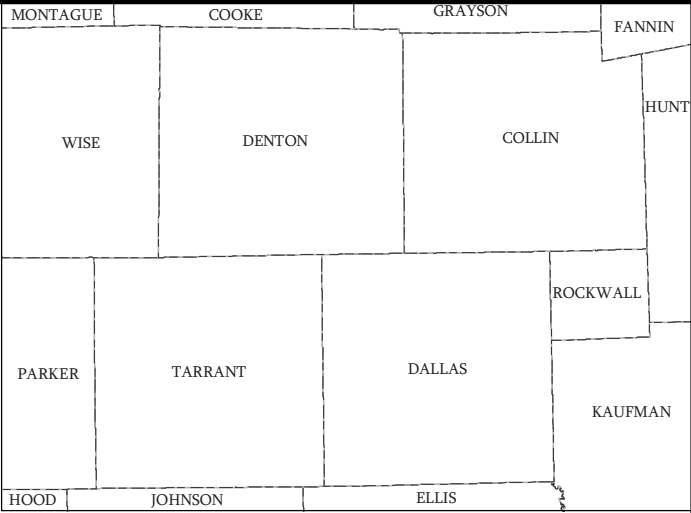
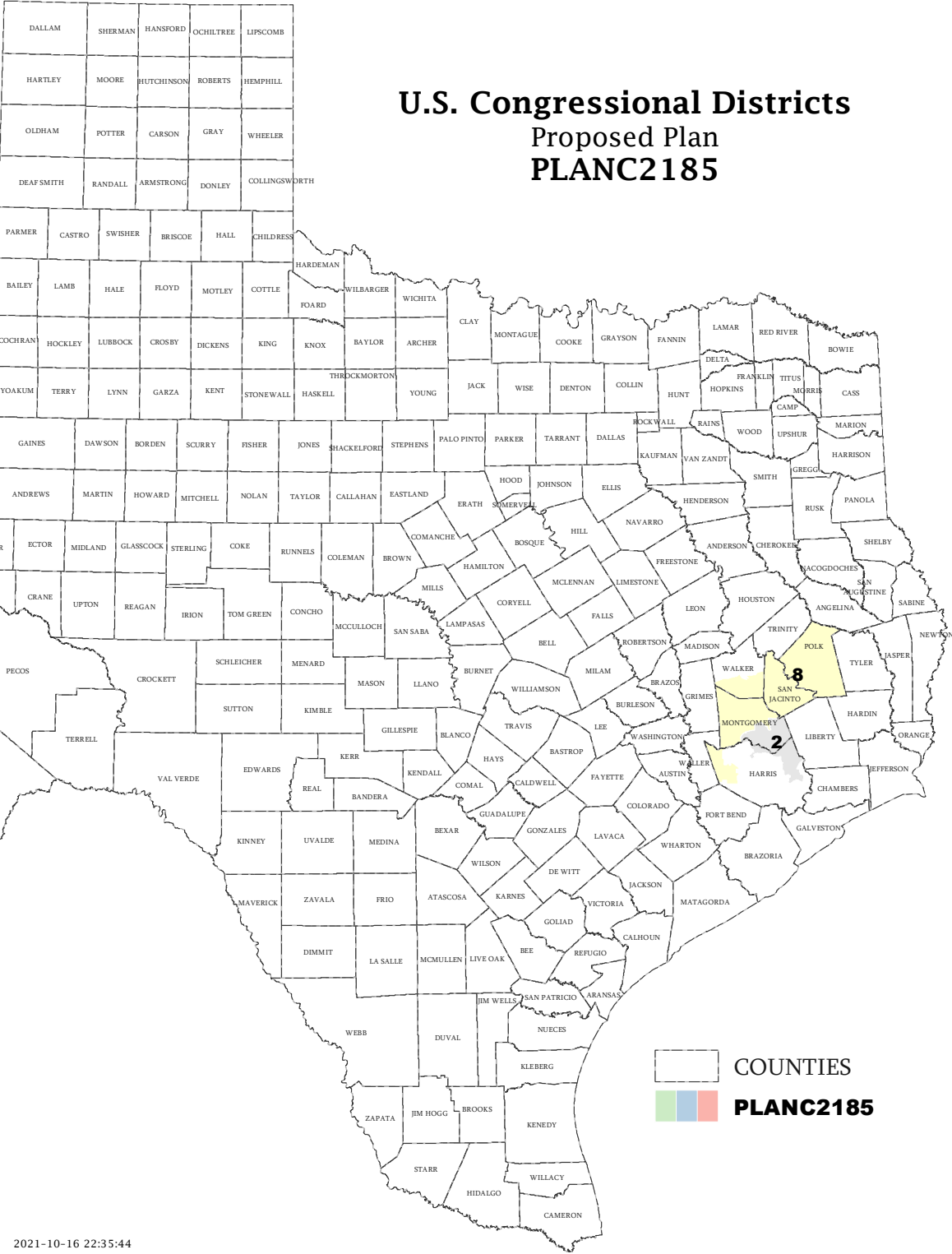
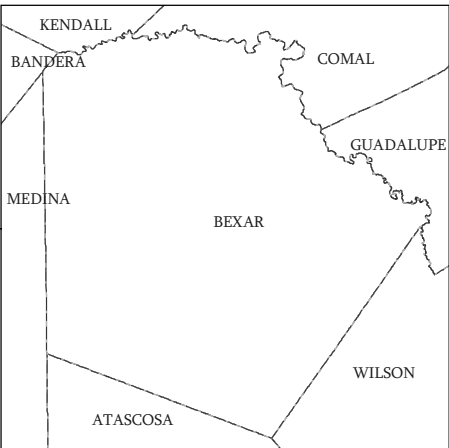
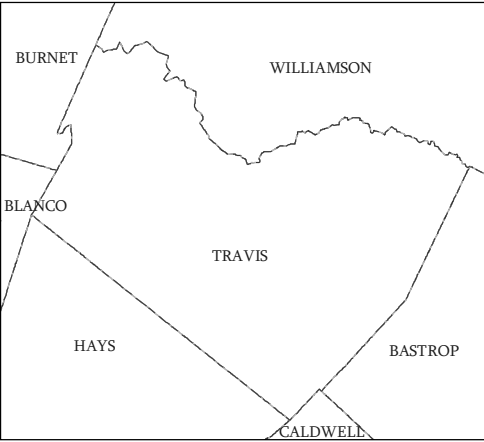
District	Incumbents
2	Brady - R
8	N/A

**American Community Survey Special Tabulation
 Using Census and American Community Survey Data
 CONGRESSIONAL DISTRICTS - PLANC2185**

2020 Census			Special Tabulation of Citizen Voting Age Population (CVAP) from the 2015-2019 American Community Survey with Margins of Error												
			CVAP	Hispanic CVAP % Hispanic	Not Hispanic or Latino Citizen Voting Age Population (CVAP)										
District	Total	VAP			% Black Alone	% Black + White	% Black + American Indian	% White Alone	% American Indian Alone	% Asian Alone	% Native Hawaiian Alone	% American Indian + White	% Asian + White	% Remainder 2 or More Other	
2	766,987	557,917	473,130 (±7,150)	19.2 (±0.7)	11.0 (±0.6)	0.3 (±0.1)	0.0(±0.0)	65.0 (±0.7)	0.2 (±0.1)	3.1 (±0.3)	0.1 (±0.1)	0.5 (±0.1)	0.3 (±0.1)	0.2 (±0.1)	
8	766,987	565,897	448,200 (±7,034)	20.7 (±0.9)	12.7 (±0.7)	0.3 (±0.1)	0.1(±0.1)	60.1 (±0.7)	0.4 (±0.1)	4.7 (±0.4)	0.1 (±0.1)	0.5 (±0.1)	0.3 (±0.1)	0.2 (±0.1)	

The American Community Survey provided estimated citizen voting age population (CVAP) data at the block group level in a Special Tabulation. Because the MOE can only be calculated using whole block groups, all block groups with more than 50% of the population in a district are included in the analysis. The Red-118 report provides a summary of the block groups used in the analysis.
 The percent for each CVAP population category is that group's CVAP divided by the CVAP total.
 Numbers in parentheses are margins of error at 90% confidence level.

U.S. Congressional Districts Proposed Plan PLANC2185



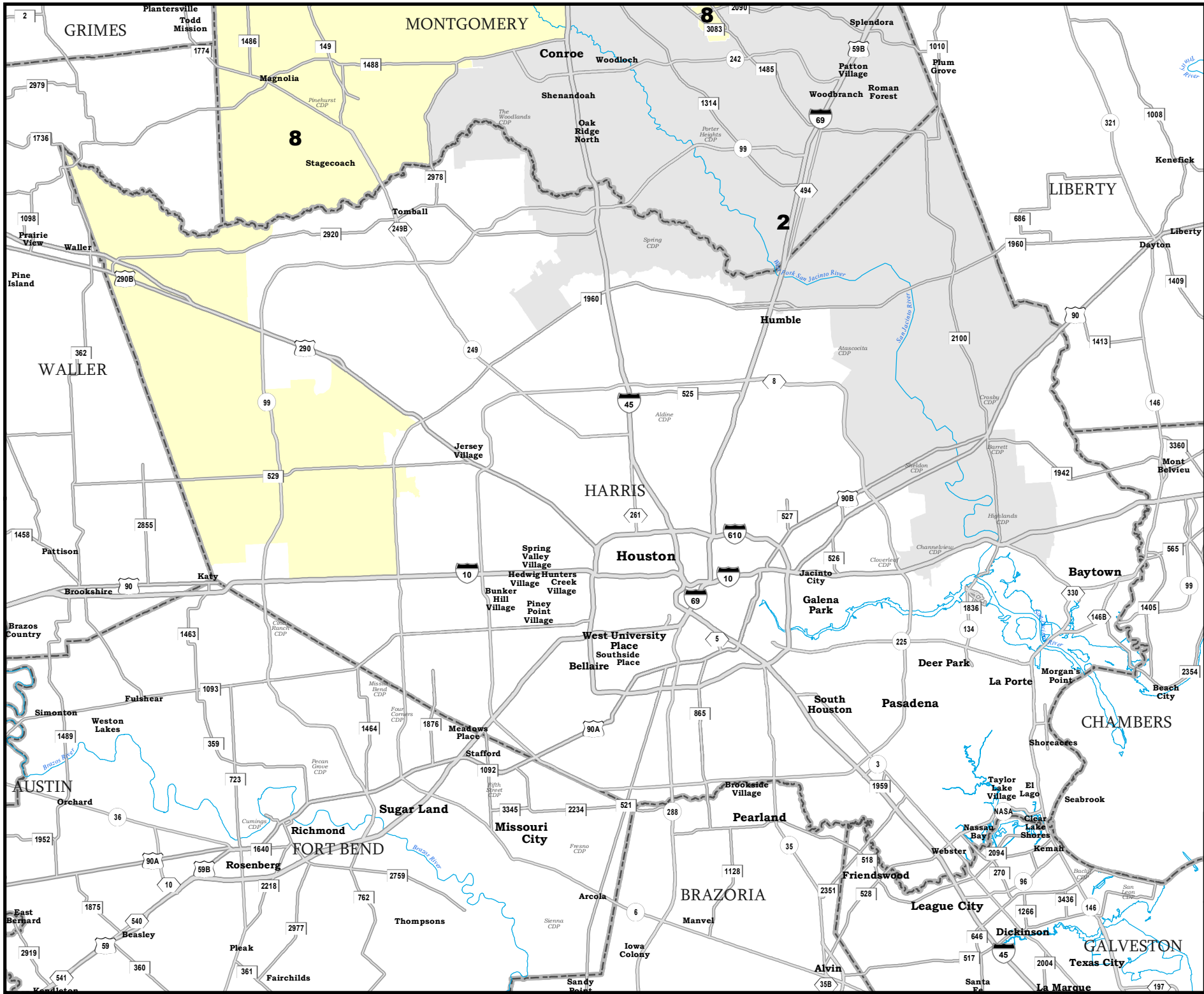
COUNTIES

 PLANC2185

Map ID 5900
10/16/21 22:52:06



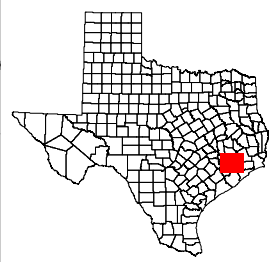
50286
2020 Census
PLANC2185 2021-10-16 22:35:44



HARRIS COUNTY

U.S. Congressional Districts Proposed Plan PLANC2185

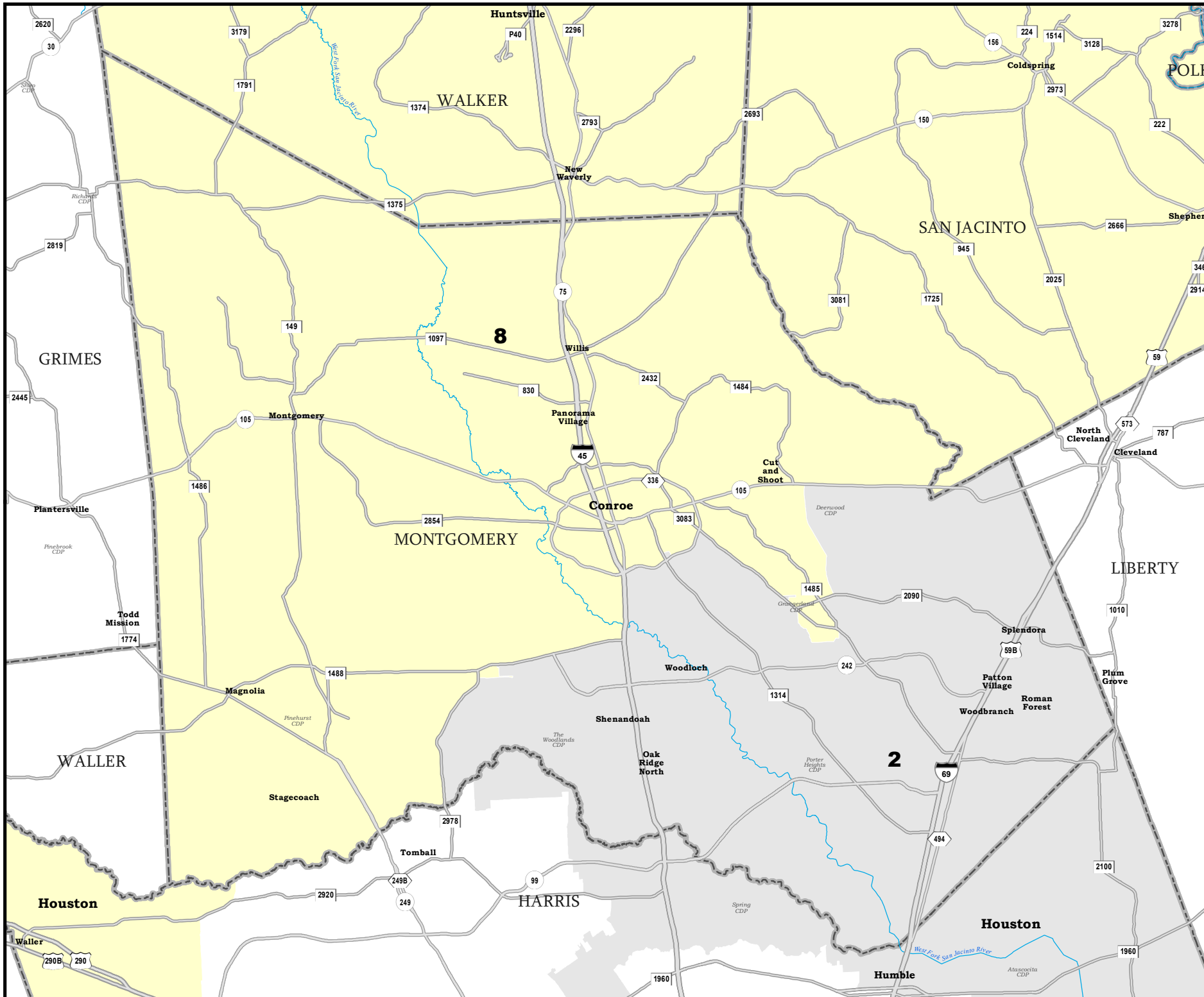
A legend showing a dashed line for 'COUNTIES' and a colored square (green, blue, red) for 'PLANC2185'.



Map ID 5900
10/16/21 22:52:06



50286
2020 Census
PLANC2185 2021-10-16 22:35:44

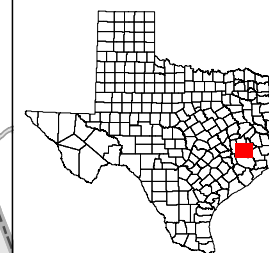


MONTGOMERY COUNTY

U.S. Congressional Districts Proposed Plan PLANC2185

 COUNTIES

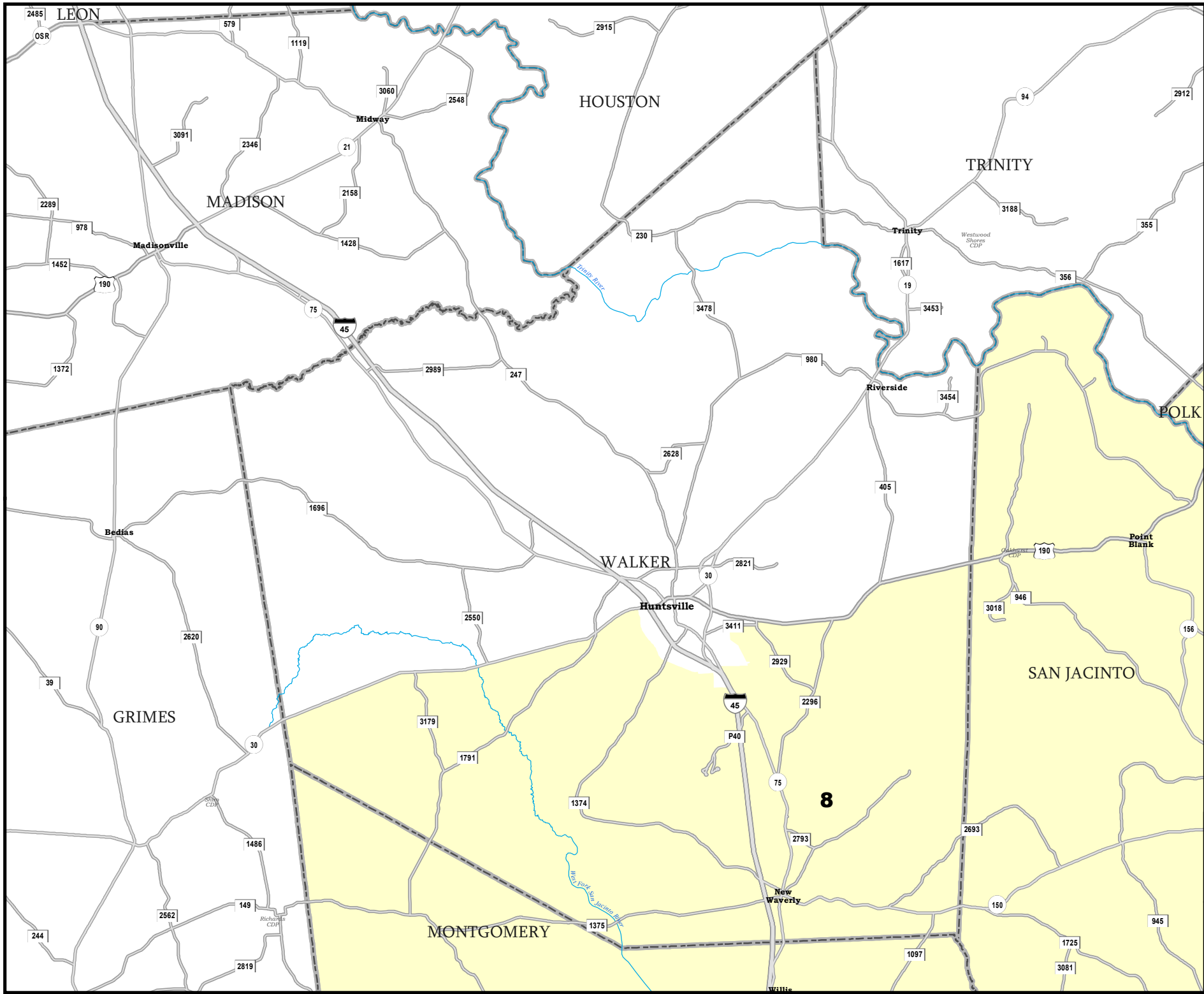
 **PLANC2185**



Map ID 5900
10/16/21 22:52:06



50286
2020 Census
PLANC2185 2021-10-16 22:35:44



WALKER COUNTY

U.S. Congressional Districts Proposed Plan PLANC2185

 COUNTIES
 **PLANC2185**

