

District Population Analysis with County Subtotals
HOUSE DISTRICTS - PLANH2104

Total State Population	29,145,505
Total Districts Required	150
Ideal District Population	194,303
Unassigned Population	28,743,022
Districts in Plan	2
Unassigned Geography	Yes
Districts Contiguous	Yes

	Population	-----Deviation-----	
		Total	Percent
Plan Overall Range		2,295	1.18%
Smallest District (119)	200,094	5,791	2.98%
Largest District (118)	202,389	8,086	4.16%
Average (mean)	201,242	6,939	3.57%

PLANH2104

District Population Analysis with County Subtotals

HOUSE DISTRICTS - PLANH2104

	Deviation		Total	Anglo	Non-Anglo	Asian	Black	Hispanic	B+H	%Anglo	%Non-Anglo	%Asian	%Black	%Hispanic	%B+H
DISTRICT 118	8,086	Total:	202,389	46,297	156,092	4,616	10,133	141,198	149,278	22.9	77.1	2.3	5.0	69.8	73.8
	4.16 %	VAP:	149,930	38,424	111,506	3,317	6,909	100,230	106,190	25.6	74.4	2.2	4.6	66.9	70.8
Bexar (10%)			202,389	46,297	156,092	4,616	10,133	141,198	149,278	22.9	77.1	2.3	5.0	69.8	73.8
DISTRICT 119	5,791	Total:	200,094	39,633	160,461	5,209	25,757	130,983	153,253	19.8	80.2	2.6	12.9	65.5	76.6
	2.98 %	VAP:	148,931	33,569	115,362	3,771	17,889	93,373	109,666	22.5	77.5	2.5	12.0	62.7	73.6
Bexar (10%)			200,094	39,633	160,461	5,209	25,757	130,983	153,253	19.8	80.2	2.6	12.9	65.5	76.6

**Population and Voter Data
 with Voter Registration Comparison
 HOUSE DISTRICTS - PLANH2104**

District	Deviation		Population								Total Voter Registration			Non-Suspense Voter Registration			
			Total	%Anglo	%Non-Anglo	%Asian	%Black	%Hispanic	%B+H	General Election	Turnout	Total	SSVR	TO/VR	Total	SSVR	TO/VR
118	8,086	Total:	202,389	22.9	77.1	2.3	5.0	69.8	73.8	2020	70,602	115,584	54.9 %	61.1 %	104,372	55.8 %	67.6 %
	4.16%	VAP:	149,930	25.6	74.4	2.2	4.6	66.9	70.8	2018	48,878	108,769	54.5 %	44.9 %	97,588	55.6 %	50.1 %
119	5,791	Total:	200,094	19.8	80.2	2.6	12.9	65.5	76.6	2020	68,243	112,450	51.1 %	60.7 %	99,423	52.0 %	68.6 %
	2.98%	VAP:	148,931	22.5	77.5	2.5	12.0	62.7	73.6	2018	46,160	104,114	50.9 %	44.3 %	91,351	52.1 %	50.5 %

For technical reasons, election results in Texas Legislative Council reports may vary slightly from the official election results. Complete official results for all elections are maintained by the Office of the Texas Secretary of State.
 SSVR = Spanish surname voter registration

Plan Fit Verification
HOUSE DISTRICTS
PLANH2104 Compared with PLANH2176

The amendment fits into the base plan.

Incumbents by District

HOUSE DISTRICTS - PLANH2104

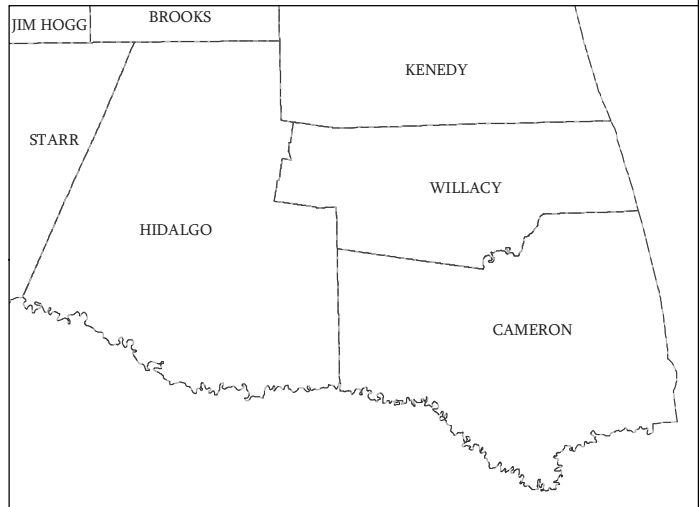
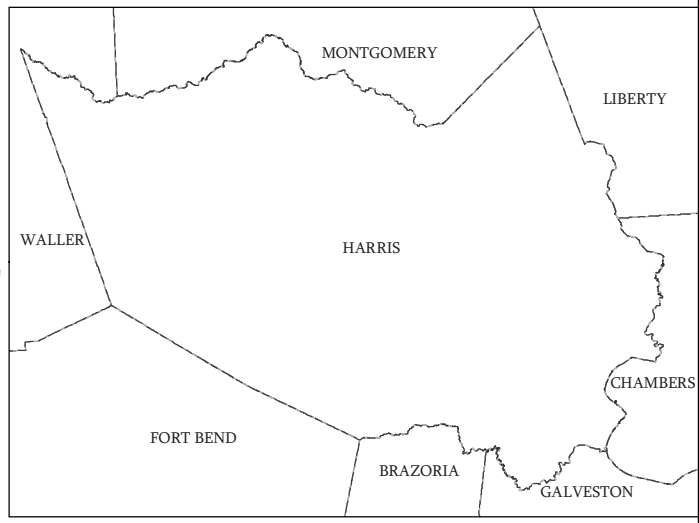
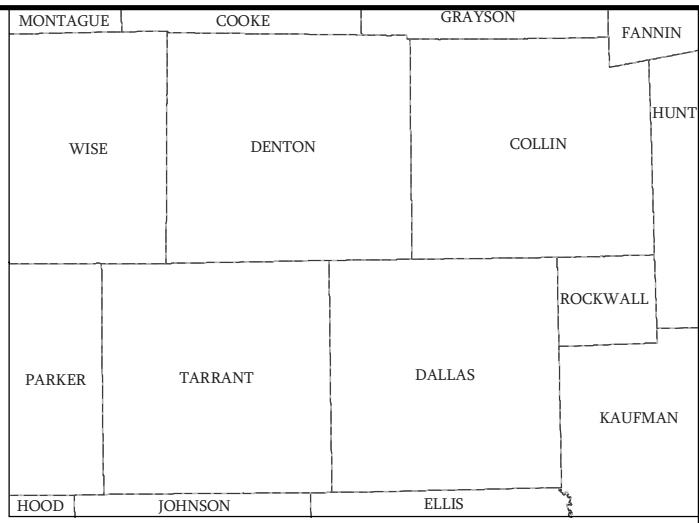
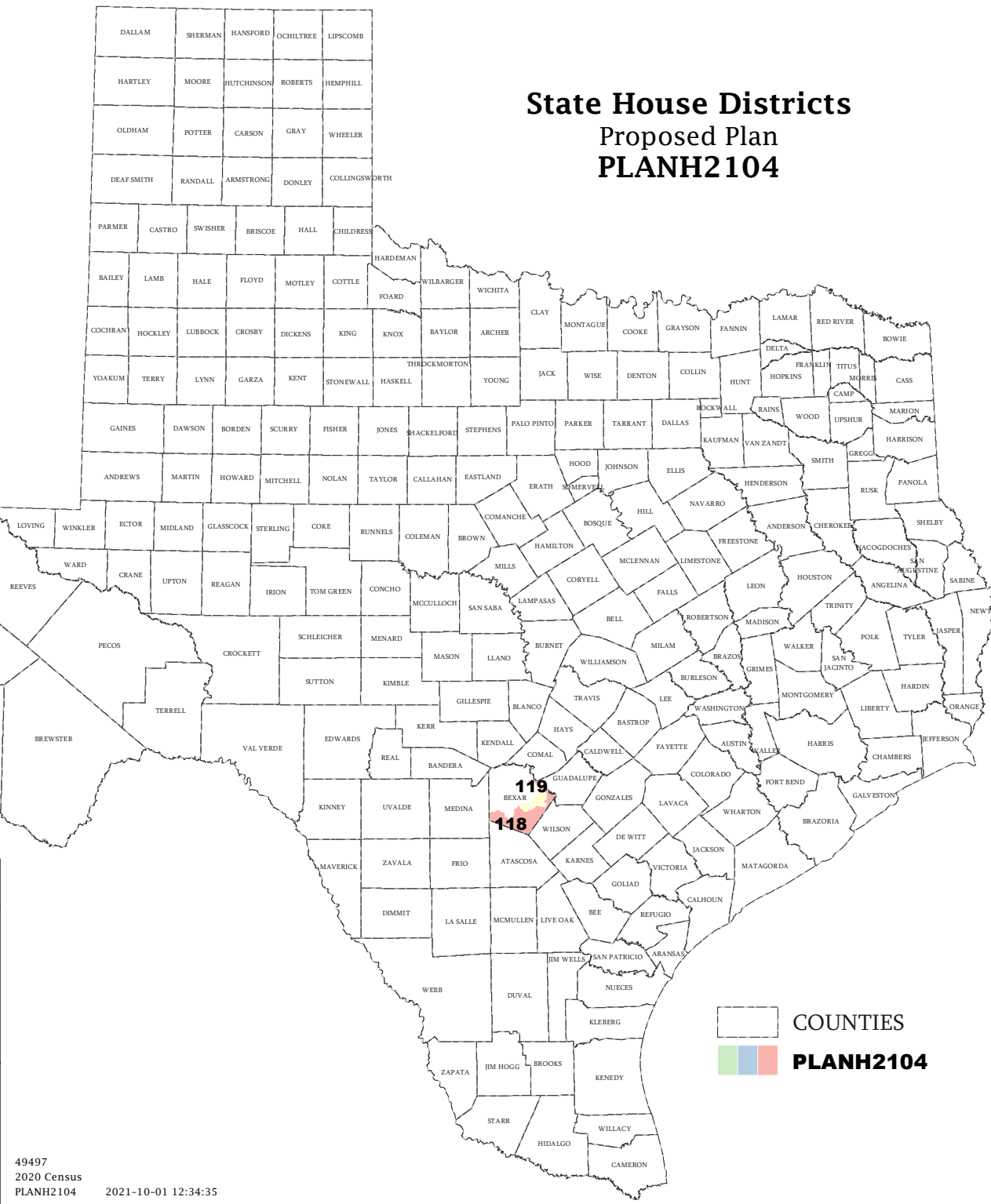
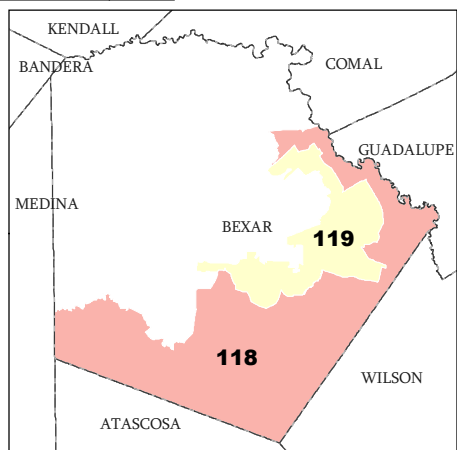
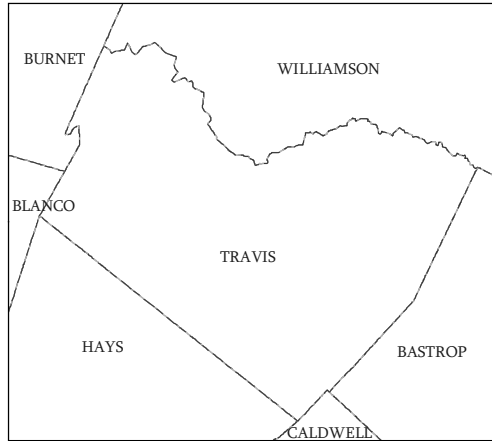
District	Incumbents
118	N/A
119	Campos - D

American Community Survey Special Tabulation
 Using Census and American Community Survey Data
HOUSE DISTRICTS - PLANH2104

2020 Census			Special Tabulation of Citizen Voting Age Population (CVAP) from the 2015-2019 American Community Survey with Margins of Error												
			CVAP	Hispanic CVAP % Hispanic	Not Hispanic or Latino Citizen Voting Age Population (CVAP)										
District	Total	VAP			% Black Alone	% Black + White	% Black + American Indian	% White Alone	% American Indian Alone	% Asian Alone	% Native Hawaiian Alone	% American Indian + White	% Asian + White	% Remainder 2 or More Other	
118	202,389	149,930	132,265 (±3,694)	63.5 (±1.7)	4.4 (±0.7)	0.2 (±0.2)	0.1(±0.1)	29.5 (±1.2)	0.1 (±0.2)	1.4 (±0.4)	0.1 (±0.1)	0.2 (±0.1)	0.2 (±0.1)	0.3 (±0.2)	
119	200,094	148,931	130,990 (±3,406)	60.9 (±1.5)	10.1 (±1.0)	0.5 (±0.2)	0.1(±0.2)	26.2 (±1.1)	0.2 (±0.2)	1.0 (±0.2)	0.0 (±0.1)	0.6 (±0.3)	0.2 (±0.1)	0.2 (±0.2)	

The American Community Survey provided estimated citizen voting age population (CVAP) data at the block group level in a Special Tabulation. Because the MOE can only be calculated using whole block groups, all block groups with more than 50% of the population in a district are included in the analysis. The Red-118 report provides a summary of the block groups used in the analysis.
 The percent for each CVAP population category is that group's CVAP divided by the CVAP total.
 Numbers in parentheses are margins of error at 90% confidence level.

State House Districts Proposed Plan PLANH2104

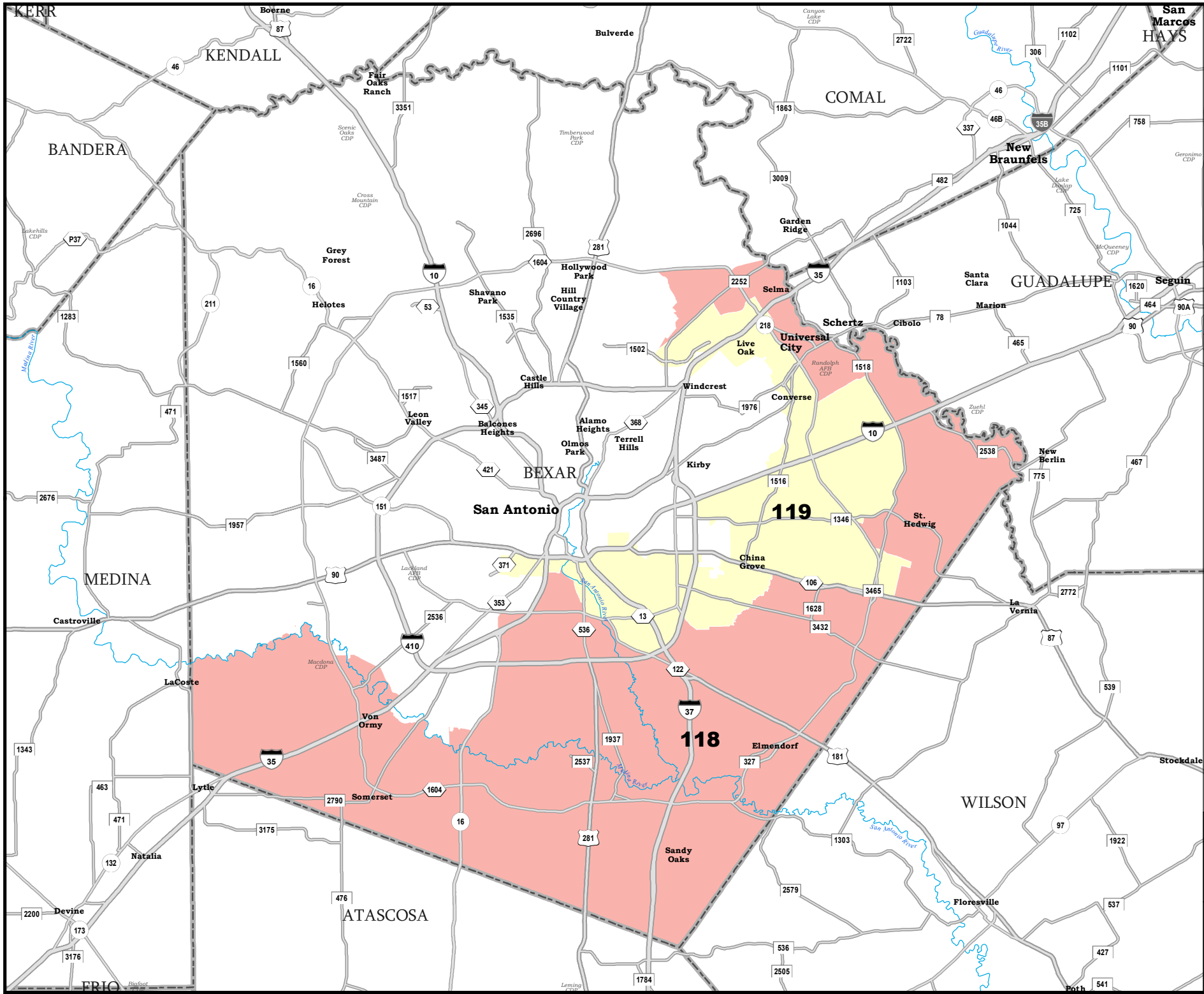


COUNTRIES
 PLANH2104

Map ID 5900
10/10/21 16:22:50



49497
2020 Census
PLANH2104 2021-10-01 12:34:35



BEXAR COUNTY

State House Districts Proposed Plan PLANH2104

 COUNTIES
 **PLANH2104**

