

District Population Analysis with County Subtotals  
**HOUSE DISTRICTS - PLANH2127**

Total State Population	29,145,505
Total Districts Required	150
Ideal District Population	194,303
Unassigned Population	24,414,360
Districts in Plan	24
Unassigned Geography	Yes
Districts Contiguous	Yes

	<b>Population</b>	<b>-----Deviation-----</b>	
		<b>Total</b>	<b>Percent</b>
Plan Overall Range		12,995	6.69%
Smallest District (147)	188,773	-5,530	-2.85%
Largest District (150)	201,768	7,465	3.84%
Average (mean)	197,131	5,084	2.62%

PLANH2127

## District Population Analysis with County Subtotals

### HOUSE DISTRICTS - PLANH2127

	Deviation		Total	Anglo	Non-Anglo	Asian	Black	Hispanic	B+H	%Anglo	%Non-Anglo	%Asian	%Black	%Hispanic	%B+H
<b>DISTRICT 126</b>	5,260	Total:	199,563	61,142	138,421	24,577	34,796	78,248	111,064	30.6	69.4	12.3	17.4	39.2	55.7
	2.71 %	VAP:	149,518	51,022	98,496	18,891	24,141	54,118	77,314	34.1	65.9	12.6	16.1	36.2	51.7
Harris (4%)			199,563	61,142	138,421	24,577	34,796	78,248	111,064	30.6	69.4	12.3	17.4	39.2	55.7
<b>DISTRICT 127</b>	888	Total:	195,191	88,734	106,457	8,019	38,094	57,501	93,649	45.5	54.5	4.1	19.5	29.5	48.0
	0.46 %	VAP:	143,016	70,498	72,518	5,806	25,822	38,105	63,036	49.3	50.7	4.1	18.1	26.6	44.1
Harris (4%)			195,191	88,734	106,457	8,019	38,094	57,501	93,649	45.5	54.5	4.1	19.5	29.5	48.0
<b>DISTRICT 128</b>	6,034	Total:	200,337	94,549	105,788	5,106	24,234	73,665	96,292	47.2	52.8	2.5	12.1	36.8	48.1
	3.11 %	VAP:	145,709	74,848	70,861	3,571	16,291	48,037	63,665	51.4	48.6	2.5	11.2	33.0	43.7
Harris (4%)			200,337	94,549	105,788	5,106	24,234	73,665	96,292	47.2	52.8	2.5	12.1	36.8	48.1
<b>DISTRICT 129</b>	6,573	Total:	200,876	98,733	102,143	21,669	18,651	59,153	76,211	49.2	50.8	10.8	9.3	29.4	37.9
	3.38 %	VAP:	156,254	82,401	73,853	16,574	13,256	41,102	53,620	52.7	47.3	10.6	8.5	26.3	34.3
Harris (4%)			200,876	98,733	102,143	21,669	18,651	59,153	76,211	49.2	50.8	10.8	9.3	29.4	37.9
<b>DISTRICT 130</b>	7,362	Total:	201,665	103,248	98,417	21,716	24,419	49,391	72,402	51.2	48.8	10.8	12.1	24.5	35.9
	3.79 %	VAP:	147,903	80,323	67,580	15,358	16,542	32,915	48,845	54.3	45.7	10.4	11.2	22.3	33.0
Harris (4%)			201,665	103,248	98,417	21,716	24,419	49,391	72,402	51.2	48.8	10.8	12.1	24.5	35.9
<b>DISTRICT 131</b>	-5,309	Total:	188,994	10,824	178,170	14,429	72,577	92,294	162,154	5.7	94.3	7.6	38.4	48.8	85.8
	-2.73 %	VAP:	137,498	9,126	128,372	11,843	53,871	63,008	115,322	6.6	93.4	8.6	39.2	45.8	83.9
Harris (4%)			188,994	10,824	178,170	14,429	72,577	92,294	162,154	5.7	94.3	7.6	38.4	48.8	85.8
<b>DISTRICT 132</b>	7,304	Total:	201,607	91,041	110,566	23,838	26,920	57,686	82,796	45.2	54.8	11.8	13.4	28.6	41.1
	3.76 %	VAP:	144,973	69,511	75,462	16,373	18,116	38,881	56,030	47.9	52.1	11.3	12.5	26.8	38.6
Harris (4%)			201,607	91,041	110,566	23,838	26,920	57,686	82,796	45.2	54.8	11.8	13.4	28.6	41.1
<b>DISTRICT 133</b>	2,115	Total:	196,418	102,238	94,180	26,716	26,833	38,849	64,081	52.1	47.9	13.6	13.7	19.8	32.6
	1.09 %	VAP:	154,573	83,869	70,704	20,158	20,231	28,590	47,833	54.3	45.7	13.0	13.1	18.5	30.9
Harris (4%)			196,418	102,238	94,180	26,716	26,833	38,849	64,081	52.1	47.9	13.6	13.7	19.8	32.6
<b>DISTRICT 134</b>	6,215	Total:	200,518	117,372	83,146	34,141	15,472	31,056	45,523	58.5	41.5	17.0	7.7	15.5	22.7
	3.20 %	VAP:	166,446	100,347	66,099	26,420	12,487	24,702	36,630	60.3	39.7	15.9	7.5	14.8	22.0
Harris (4%)			200,518	117,372	83,146	34,141	15,472	31,056	45,523	58.5	41.5	17.0	7.7	15.5	22.7
<b>DISTRICT 135</b>	6,144	Total:	200,447	47,018	153,429	21,035	47,514	85,690	130,201	23.5	76.5	10.5	23.7	42.7	65.0
	3.16 %	VAP:	146,028	38,515	107,513	16,054	32,251	58,791	89,499	26.4	73.6	11.0	22.1	40.3	61.3
Harris (4%)			200,447	47,018	153,429	21,035	47,514	85,690	130,201	23.5	76.5	10.5	23.7	42.7	65.0
<b>DISTRICT 137</b>	7,366	Total:	201,669	28,071	173,598	25,242	45,745	103,752	146,452	13.9	86.1	12.5	22.7	51.4	72.6
	3.79 %	VAP:	151,187	24,093	127,094	19,414	34,649	73,647	106,259	15.9	84.1	12.8	22.9	48.7	70.3
Harris (4%)			201,669	28,071	173,598	25,242	45,745	103,752	146,452	13.9	86.1	12.5	22.7	51.4	72.6

## District Population Analysis with County Subtotals

### HOUSE DISTRICTS - PLANH2127

	Deviation		Total	Anglo	Non-Anglo	Asian	Black	Hispanic	B+H	%Anglo	%Non-Anglo	%Asian	%Black	%Hispanic	%B+H
<b>DISTRICT 138</b>	2,459	Total:	196,762	60,540	136,222	21,333	27,737	86,468	112,202	30.8	69.2	10.8	14.1	43.9	57.0
	1.27 %	VAP:	144,813	49,284	95,529	16,282	18,557	59,528	77,038	34.0	66.0	11.2	12.8	41.1	53.2
Harris (4%)			196,762	60,540	136,222	21,333	27,737	86,468	112,202	30.8	69.2	10.8	14.1	43.9	57.0
<b>DISTRICT 139</b>	7,284	Total:	201,587	26,367	175,220	11,838	75,342	88,725	161,782	13.1	86.9	5.9	37.4	44.0	80.3
	3.75 %	VAP:	148,447	21,977	126,470	9,567	56,517	60,310	115,602	14.8	85.2	6.4	38.1	40.6	77.9
Harris (4%)			201,587	26,367	175,220	11,838	75,342	88,725	161,782	13.1	86.9	5.9	37.4	44.0	80.3
<b>DISTRICT 140</b>	-4,996	Total:	189,307	10,885	178,422	4,196	20,875	154,144	173,409	5.7	94.3	2.2	11.0	81.4	91.6
	-2.57 %	VAP:	131,982	9,353	122,629	3,279	15,098	104,402	118,712	7.1	92.9	2.5	11.4	79.1	89.9
Harris (4%)			189,307	10,885	178,422	4,196	20,875	154,144	173,409	5.7	94.3	2.2	11.0	81.4	91.6
<b>DISTRICT 141</b>	5,841	Total:	200,144	13,022	187,122	4,027	95,495	88,749	181,479	6.5	93.5	2.0	47.7	44.3	90.7
	3.01 %	VAP:	141,087	11,184	129,903	3,138	68,232	58,832	125,636	7.9	92.1	2.2	48.4	41.7	89.0
Harris (4%)			200,144	13,022	187,122	4,027	95,495	88,749	181,479	6.5	93.5	2.0	47.7	44.3	90.7
<b>DISTRICT 142</b>	-2,638	Total:	191,665	24,953	166,712	4,984	74,696	87,800	160,036	13.0	87.0	2.6	39.0	45.8	83.5
	-1.36 %	VAP:	137,410	20,326	117,084	3,593	55,342	58,081	112,131	14.8	85.2	2.6	40.3	42.3	81.6
Harris (4%)			191,665	24,953	166,712	4,984	74,696	87,800	160,036	13.0	87.0	2.6	39.0	45.8	83.5
<b>DISTRICT 143</b>	-4,446	Total:	189,857	17,029	172,828	3,055	28,670	142,069	168,755	9.0	91.0	1.6	15.1	74.8	88.9
	-2.29 %	VAP:	136,172	14,507	121,665	2,379	21,027	98,409	118,418	10.7	89.3	1.7	15.4	72.3	87.0
Harris (4%)			189,857	17,029	172,828	3,055	28,670	142,069	168,755	9.0	91.0	1.6	15.1	74.8	88.9
<b>DISTRICT 144</b>	4,567	Total:	198,870	24,734	174,136	3,635	16,222	154,295	168,832	12.4	87.6	1.8	8.2	77.6	84.9
	2.35 %	VAP:	142,560	21,134	121,426	2,820	11,272	106,736	117,171	14.8	85.2	2.0	7.9	74.9	82.2
Harris (4%)			198,870	24,734	174,136	3,635	16,222	154,295	168,832	12.4	87.6	1.8	8.2	77.6	84.9
<b>DISTRICT 145</b>	-4,158	Total:	190,145	30,736	159,409	12,172	25,891	121,825	145,637	16.2	83.8	6.4	13.6	64.1	76.6
	-2.14 %	VAP:	142,189	26,871	115,318	9,556	18,521	86,937	104,381	18.9	81.1	6.7	13.0	61.1	73.4
Harris (4%)			190,145	30,736	159,409	12,172	25,891	121,825	145,637	16.2	83.8	6.4	13.6	64.1	76.6
<b>DISTRICT 146</b>	1,462	Total:	195,765	31,305	164,460	16,892	78,288	69,945	145,601	16.0	84.0	8.6	40.0	35.7	74.4
	0.75 %	VAP:	148,478	26,933	121,545	14,100	59,534	48,001	105,953	18.1	81.9	9.5	40.1	32.3	71.4
Harris (4%)			195,765	31,305	164,460	16,892	78,288	69,945	145,601	16.0	84.0	8.6	40.0	35.7	74.4
<b>DISTRICT 147</b>	-5,530	Total:	188,773	42,416	146,357	15,775	67,346	63,770	128,863	22.5	77.5	8.4	35.7	33.8	68.3
	-2.85 %	VAP:	153,698	39,895	113,803	14,073	53,392	46,204	98,226	26.0	74.0	9.2	34.7	30.1	63.9
Harris (4%)			188,773	42,416	146,357	15,775	67,346	63,770	128,863	22.5	77.5	8.4	35.7	33.8	68.3
<b>DISTRICT 148</b>	4,795	Total:	199,098	54,325	144,773	9,310	16,900	117,735	133,208	27.3	72.7	4.7	8.5	59.1	66.9
	2.47 %	VAP:	152,248	47,010	105,238	7,349	12,198	84,498	95,942	30.9	69.1	4.8	8.0	55.5	63.0
Harris (4%)			199,098	54,325	144,773	9,310	16,900	117,735	133,208	27.3	72.7	4.7	8.5	59.1	66.9

## District Population Analysis with County Subtotals

### HOUSE DISTRICTS - PLANH2127

	Deviation		Total	Anglo	Non-Anglo	Asian	Black	Hispanic	B+H	%Anglo	%Non-Anglo	%Asian	%Black	%Hispanic	%B+H
<b>DISTRICT 149</b>	5,816	Total:	200,119	31,698	168,421	39,596	51,536	77,755	126,857	15.8	84.2	19.8	25.8	38.9	63.4
	2.99 %	VAP:	150,539	26,194	124,345	32,099	36,242	55,842	90,627	17.4	82.6	21.3	24.1	37.1	60.2
Harris (4%)			200,119	31,698	168,421	39,596	51,536	77,755	126,857	15.8	84.2	19.8	25.8	38.9	63.4
<b>DISTRICT 150</b>	7,465	Total:	201,768	98,613	103,155	19,134	27,231	54,144	79,782	48.9	51.1	9.5	13.5	26.8	39.5
	3.84 %	VAP:	146,856	76,442	70,414	13,651	18,577	35,677	53,510	52.1	47.9	9.3	12.6	24.3	36.4
Harris (4%)			201,768	98,613	103,155	19,134	27,231	54,144	79,782	48.9	51.1	9.5	13.5	26.8	39.5

Population and Voter Data  
 with Voter Registration Comparison  
**HOUSE DISTRICTS - PLANH2127**

District	Deviation		Population							Total Voter Registration			Non-Suspense Voter Registration				
			Total	%Anglo	%Non-Anglo	%Asian	%Black	%Hispanic	%B+H	General Election	Turnout	Total	SSVR	TO/VR	Total	SSVR	TO/VR
126	5,260 2.71%	Total:	199,563	30.6	69.4	12.3	17.4	39.2	55.7	2020	77,241	113,372	22.1 %	68.1 %	104,392	22.6 %	74.0 %
		VAP:	149,518	34.1	65.9	12.6	16.1	36.2	51.7	2018	57,211	107,253	21.0 %	53.3 %	97,361	21.7 %	58.8 %
127	888 0.46%	Total:	195,191	45.5	54.5	4.1	19.5	29.5	48.0	2020	86,590	123,320	16.4 %	70.2 %	113,418	16.7 %	76.3 %
		VAP:	143,016	49.3	50.7	4.1	18.1	26.6	44.1	2018	65,279	117,845	15.3 %	55.4 %	106,359	15.7 %	61.4 %
128	6,034 3.11%	Total:	200,337	47.2	52.8	2.5	12.1	36.8	48.1	2020	75,708	110,706	21.2 %	68.4 %	102,998	21.5 %	73.5 %
		VAP:	145,709	51.4	48.6	2.5	11.2	33.0	43.7	2018	52,966	102,462	19.7 %	51.7 %	93,849	20.0 %	56.4 %
129	6,573 3.38%	Total:	200,876	49.2	50.8	10.8	9.3	29.4	37.9	2020	89,971	125,131	16.7 %	71.9 %	114,546	16.8 %	78.5 %
		VAP:	156,254	52.7	47.3	10.6	8.5	26.3	34.3	2018	67,282	117,630	15.5 %	57.2 %	105,619	15.7 %	63.7 %
130	7,362 3.79%	Total:	201,665	51.2	48.8	10.8	12.1	24.5	35.9	2020	94,328	126,845	14.1 %	74.4 %	118,749	14.2 %	79.4 %
		VAP:	147,903	54.3	45.7	10.4	11.2	22.3	33.0	2018	68,849	118,049	13.3 %	58.3 %	108,225	13.5 %	63.6 %
131	-5,309 -2.73%	Total:	188,994	5.7	94.3	7.6	38.4	48.8	85.8	2020	53,628	88,461	24.9 %	60.6 %	81,869	25.7 %	65.5 %
		VAP:	137,498	6.6	93.4	8.6	39.2	45.8	83.9	2018	39,630	85,443	23.5 %	46.4 %	77,493	24.5 %	51.1 %
132	7,304 3.76%	Total:	201,607	45.2	54.8	11.8	13.4	28.6	41.1	2020	84,771	113,516	15.3 %	74.7 %	105,915	15.4 %	80.0 %
		VAP:	144,973	47.9	52.1	11.3	12.5	26.8	38.6	2018	56,540	97,425	14.5 %	58.0 %	89,068	14.8 %	63.5 %
133	2,115 1.09%	Total:	196,418	52.1	47.9	13.6	13.7	19.8	32.6	2020	92,149	120,807	9.1 %	76.3 %	110,800	9.0 %	83.2 %
		VAP:	154,573	54.3	45.7	13.0	13.1	18.5	30.9	2018	72,581	113,622	8.6 %	63.9 %	102,212	8.6 %	71.0 %
134	6,215 3.20%	Total:	200,518	58.5	41.5	17.0	7.7	15.5	22.7	2020	107,672	138,647	8.2 %	77.7 %	126,338	8.1 %	85.2 %
		VAP:	166,446	60.3	39.7	15.9	7.5	14.8	22.0	2018	87,105	129,959	8.1 %	67.0 %	116,327	8.1 %	74.9 %
135	6,144 3.16%	Total:	200,447	23.5	76.5	10.5	23.7	42.7	65.0	2020	71,077	105,364	24.7 %	67.5 %	97,345	25.2 %	73.0 %
		VAP:	146,028	26.4	73.6	11.0	22.1	40.3	61.3	2018	50,686	98,245	23.5 %	51.6 %	88,684	24.2 %	57.2 %
137	7,366 3.79%	Total:	201,669	13.9	86.1	12.5	22.7	51.4	72.6	2020	36,698	63,047	20.0 %	58.2 %	55,698	20.1 %	65.9 %
		VAP:	151,187	15.9	84.1	12.8	22.9	48.7	70.3	2018	26,811	61,157	19.7 %	43.8 %	52,204	20.2 %	51.4 %
138	2,459 1.27%	Total:	196,762	30.8	69.2	10.8	14.1	43.9	57.0	2020	74,339	105,250	23.5 %	70.6 %	98,581	23.8 %	75.4 %
		VAP:	144,813	34.0	66.0	11.2	12.8	41.1	53.2	2018	53,999	96,140	22.6 %	56.2 %	88,429	22.9 %	61.1 %
139	7,284 3.75%	Total:	201,587	13.1	86.9	5.9	37.4	44.0	80.3	2020	67,288	107,966	20.4 %	62.3 %	99,863	20.8 %	67.4 %
		VAP:	148,447	14.8	85.2	6.4	38.1	40.6	77.9	2018	50,360	104,186	19.0 %	48.3 %	94,879	19.5 %	53.1 %
140	-4,996 -2.57%	Total:	189,307	5.7	94.3	2.2	11.0	81.4	91.6	2020	34,559	68,690	61.2 %	50.3 %	64,904	62.3 %	53.2 %
		VAP:	131,982	7.1	92.9	2.5	11.4	79.1	89.9	2018	24,473	65,018	60.3 %	37.6 %	60,645	61.6 %	40.4 %
141	5,841 3.01%	Total:	200,144	6.5	93.5	2.0	47.7	44.3	90.7	2020	48,084	89,066	20.6 %	54.0 %	78,874	21.4 %	61.0 %
		VAP:	141,087	7.9	92.1	2.2	48.4	41.7	89.0	2018	33,733	85,860	18.9 %	39.3 %	75,083	19.7 %	44.9 %
142	-2,638 -1.36%	Total:	191,665	13.0	87.0	2.6	39.0	45.8	83.5	2020	55,650	90,794	24.1 %	61.3 %	83,871	24.8 %	66.4 %
		VAP:	137,410	14.8	85.2	2.6	40.3	42.3	81.6	2018	38,252	84,127	22.3 %	45.5 %	76,531	23.1 %	50.0 %
143	-4,446 -2.29%	Total:	189,857	9.0	91.0	1.6	15.1	74.8	88.9	2020	44,520	80,088	56.2 %	55.6 %	74,686	57.4 %	59.6 %
		VAP:	136,172	10.7	89.3	1.7	15.4	72.3	87.0	2018	32,809	76,799	55.1 %	42.7 %	70,965	56.6 %	46.2 %
144	4,567 2.35%	Total:	198,870	12.4	87.6	1.8	8.2	77.6	84.9	2020	39,825	77,810	60.3 %	51.2 %	71,508	61.8 %	55.7 %
		VAP:	142,560	14.8	85.2	2.0	7.9	74.9	82.2	2018	28,874	74,662	59.3 %	38.7 %	67,702	61.0 %	42.6 %
145	-4,158 -2.14%	Total:	190,145	16.2	83.8	6.4	13.6	64.1	76.6	2020	55,516	91,373	47.3 %	60.8 %	84,483	48.5 %	65.7 %
		VAP:	142,189	18.9	81.1	6.7	13.0	61.1	73.4	2018	40,671	86,323	47.3 %	47.1 %	78,310	48.7 %	51.9 %
146	1,462 0.75%	Total:	195,765	16.0	84.0	8.6	40.0	35.7	74.4	2020	62,260	99,115	13.9 %	62.8 %	89,479	14.2 %	69.6 %
		VAP:	148,478	18.1	81.9	9.5	40.1	32.3	71.4	2018	48,198	95,860	13.1 %	50.3 %	85,269	13.5 %	56.5 %

For technical reasons, election results in Texas Legislative Council reports may vary slightly from the official election results. Complete official results for all elections are maintained by the Office of the Texas Secretary of State.  
 SSVR = Spanish surname voter registration

**Population and Voter Data  
 with Voter Registration Comparison  
 HOUSE DISTRICTS - PLANH2127**

District	Deviation		Population							Total Voter Registration			Non-Suspense Voter Registration				
			Total	%Anglo	%Non-Anglo	%Asian	%Black	%Hispanic	%B+H	General Election	Turnout	Total	SSVR	TO/VR	Total	SSVR	TO/VR
147	-5,530	Total:	188,773	22.5	77.5	8.4	35.7	33.8	68.3	2020	69,995	112,585	16.7 %	62.2 %	99,779	17.5 %	70.2 %
	-2.85%	VAP:	153,698	26.0	74.0	9.2	34.7	30.1	63.9	2018	54,834	108,120	15.6 %	50.7 %	95,124	16.4 %	57.6 %
148	4,795	Total:	199,098	27.3	72.7	4.7	8.5	59.1	66.9	2020	68,457	103,417	36.6 %	66.2 %	96,013	37.0 %	71.3 %
	2.47%	VAP:	152,248	30.9	69.1	4.8	8.0	55.5	63.0	2018	52,900	97,311	37.2 %	54.4 %	88,744	38.0 %	59.6 %
149	5,816	Total:	200,119	15.8	84.2	19.8	25.8	38.9	63.4	2020	61,953	98,636	22.6 %	62.8 %	91,081	23.1 %	68.0 %
	2.99%	VAP:	150,539	17.4	82.6	21.3	24.1	37.1	60.2	2018	42,857	93,579	21.9 %	45.8 %	84,450	22.8 %	50.7 %
150	7,465	Total:	201,768	48.9	51.1	9.5	13.5	26.8	39.5	2020	88,783	121,452	14.2 %	73.1 %	112,468	14.4 %	78.9 %
	3.84%	VAP:	146,856	52.1	47.9	9.3	12.6	24.3	36.4	2018	63,317	109,594	13.4 %	57.8 %	99,985	13.6 %	63.3 %

For technical reasons, election results in Texas Legislative Council reports may vary slightly from the official election results. Complete official results for all elections are maintained by the Office of the Texas Secretary of State.  
 SSVR = Spanish surname voter registration

**Plan Fit Verification**  
**HOUSE DISTRICTS**  
**PLANH2127 Compared with PLANH2176**

**The amendment fits into the base plan.**

## Incumbents by District

### HOUSE DISTRICTS - PLANH2127

<b>District</b>	<b>Incumbents</b>
126	Harless - R
127	Huberty - R
128	Cain - R
129	Paul - R
130	Oliverson - R
131	Allen - D
132	Schofield - R
133	Murphy - R
134	A. Johnson - D
135	Rosenthal - D
137	Wu - D
138	Hull - R
139	Ja. Johnson - D
140	Walle - D
141	S. Thompson - D
142	Dutton, Jr. - D
143	Hernandez - D
144	Perez - D
145	Morales - D
146	Thierry - D
147	Coleman - D
148	Morales Shaw - D
149	Vo - D
150	Swanson - R



American Community Survey Special Tabulation  
 Using Census and American Community Survey Data  
**HOUSE DISTRICTS - PLANH2127**

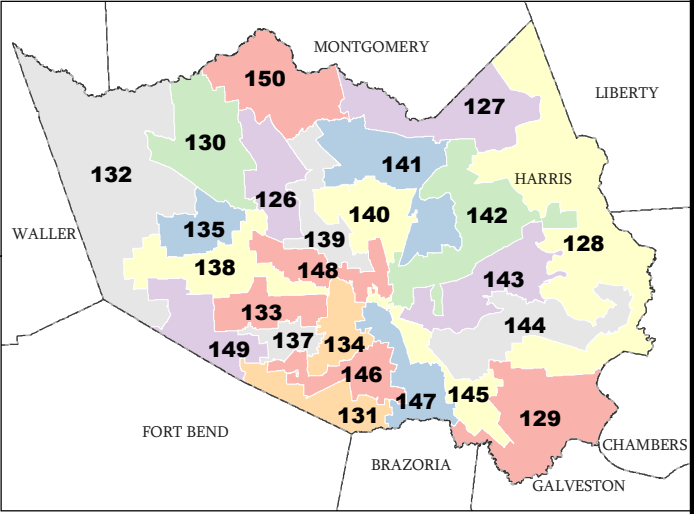
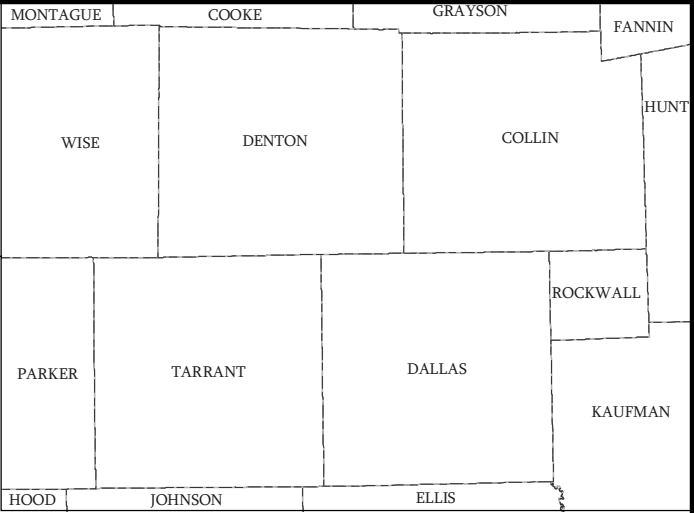
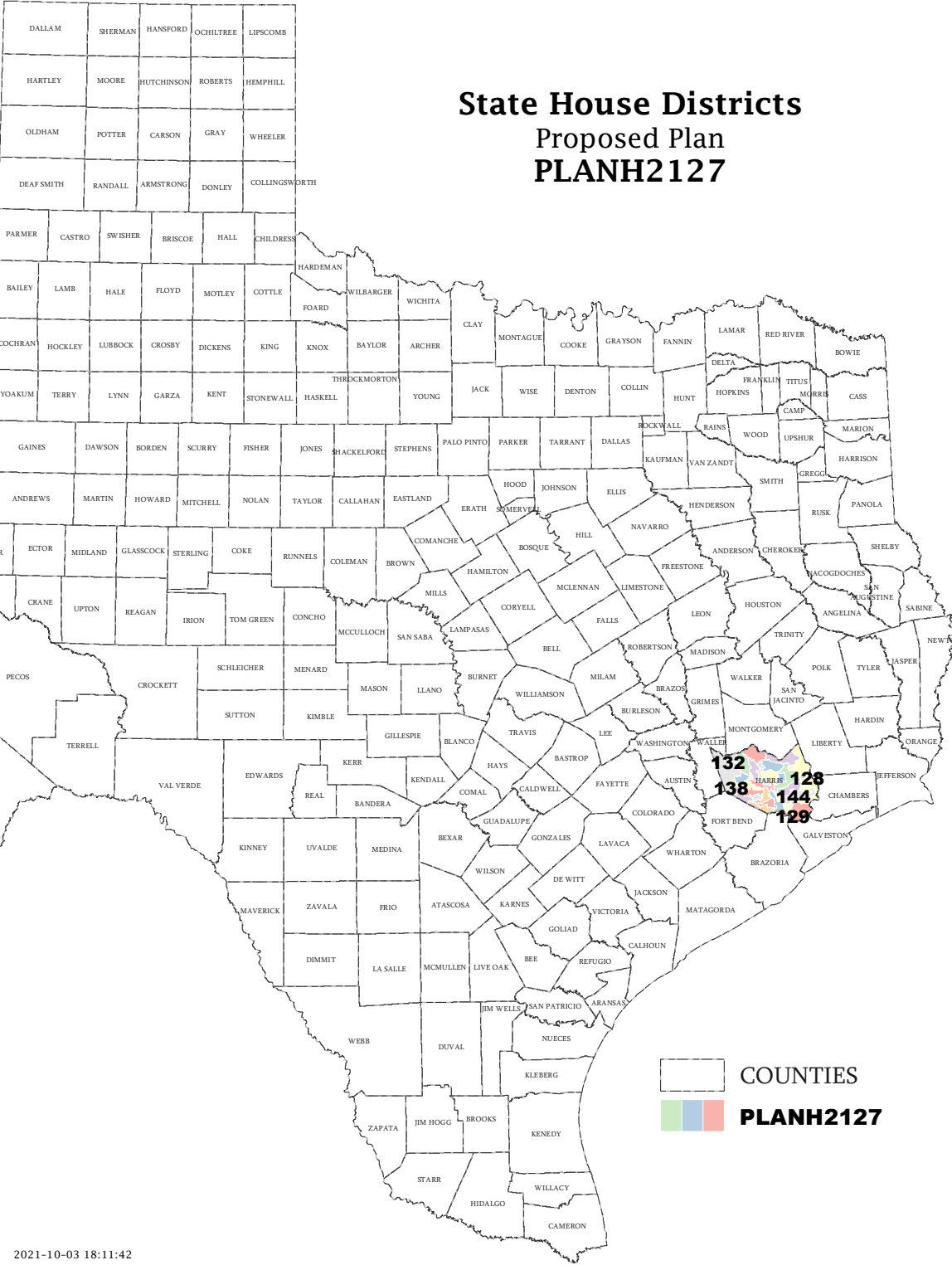
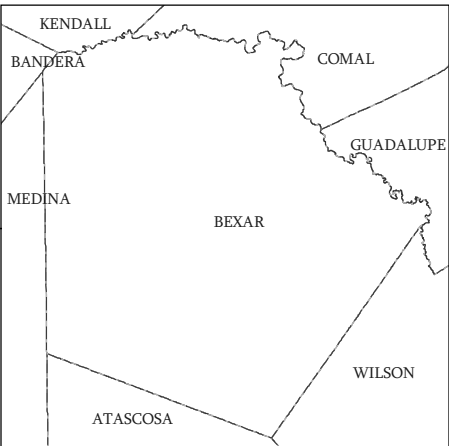
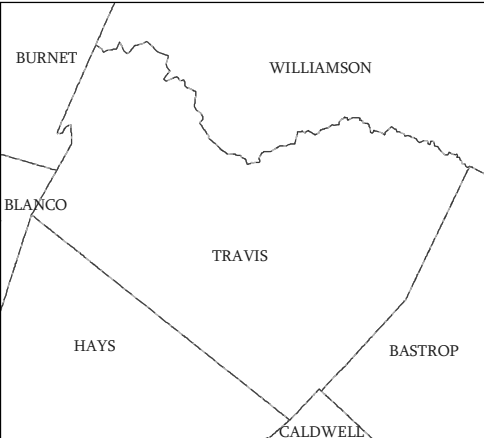
Special Tabulation of Citizen Voting Age Population (CVAP) from the 2015-2019 American Community Survey with Margins of Error														
2020 Census			CVAP	Hispanic CVAP % Hispanic	Not Hispanic or Latino Citizen Voting Age Population (CVAP)									
District	Total	VAP			% Black Alone	% Black + White	% Black + American Indian	% White Alone	% American Indian Alone	% Asian Alone	% Native Hawaiian Alone	% American Indian + White	% Asian + White	% Remainder 2 or More Other
126	199,563	149,518	118,010 (±3,437)	26.3 (±1.6)	17.1 (±1.4)	0.4 (±0.2)	0.0(±0.1)	44.4 (±1.4)	0.2 (±0.2)	10.6 (±1.0)	0.1 (±0.1)	0.2 (±0.2)	0.2 (±0.2)	0.4 (±0.2)
127	195,191	143,016	124,215 (±3,300)	22.1 (±1.4)	16.4 (±1.5)	0.3 (±0.2)	0.0(±0.1)	57.6 (±1.1)	0.1 (±0.1)	2.3 (±0.4)	0.3 (±0.3)	0.4 (±0.2)	0.2 (±0.2)	0.4 (±0.3)
128	200,337	145,709	121,790 (±3,186)	27.1 (±1.6)	9.5 (±1.1)	0.3 (±0.2)	0.0(±0.1)	60.8 (±1.1)	0.3 (±0.2)	1.0 (±0.4)	0.0 (±0.1)	0.6 (±0.2)	0.2 (±0.1)	0.1 (±0.1)
129	200,876	156,254	134,355 (±2,989)	22.7 (±1.3)	7.4 (±0.9)	0.6 (±0.2)	0.1(±0.1)	59.5 (±1.0)	0.2 (±0.1)	8.0 (±0.7)	0.0 (±0.1)	0.6 (±0.2)	0.5 (±0.2)	0.4 (±0.3)
130	201,665	147,903	132,000 (±3,558)	17.8 (±1.4)	10.8 (±1.2)	0.1 (±0.1)	0.0(±0.1)	61.7 (±1.3)	0.2 (±0.2)	8.1 (±0.9)	0.0 (±0.1)	0.7 (±0.3)	0.3 (±0.2)	0.3 (±0.3)
131	188,994	137,498	108,675 (±3,578)	28.9 (±1.6)	52.9 (±2.0)	0.2 (±0.2)	0.2(±0.2)	10.7 (±0.9)	0.1 (±0.1)	6.7 (±0.7)	0.0 (±0.1)	0.0 (±0.1)	0.2 (±0.2)	0.1 (±0.1)
132	201,607	144,973	111,970 (±2,910)	21.1 (±1.6)	9.3 (±1.2)	0.3 (±0.2)	0.0(±0.1)	59.5 (±1.3)	0.5 (±0.3)	8.1 (±0.8)	0.0 (±0.1)	0.4 (±0.2)	0.4 (±0.2)	0.3 (±0.3)
133	196,418	154,573	118,005 (±2,814)	14.5 (±1.1)	10.2 (±1.1)	0.4 (±0.3)	0.2(±0.2)	65.8 (±1.0)	0.2 (±0.2)	7.5 (±0.7)	0.0 (±0.1)	0.3 (±0.2)	0.6 (±0.2)	0.2 (±0.2)
134	200,518	166,446	137,335 (±2,880)	12.0 (±0.8)	5.8 (±0.7)	0.3 (±0.2)	0.0(±0.1)	70.2 (±1.0)	0.2 (±0.1)	10.0 (±0.8)	0.0 (±0.1)	0.5 (±0.2)	0.9 (±0.2)	0.2 (±0.2)
135	200,447	146,028	114,870 (±3,718)	31.3 (±2.0)	23.4 (±1.8)	0.2 (±0.2)	0.1(±0.1)	33.6 (±1.5)	0.1 (±0.2)	10.3 (±1.2)	0.0 (±0.1)	0.2 (±0.2)	0.4 (±0.2)	0.3 (±0.2)
137	201,669	151,187	78,035 (±2,730)	29.1 (±1.7)	31.2 (±2.2)	0.2 (±0.2)	0.0(±0.2)	28.0 (±1.4)	0.4 (±0.3)	10.2 (±1.1)	0.0 (±0.2)	0.3 (±0.2)	0.4 (±0.3)	0.2 (±0.3)
138	196,762	144,813	97,995 (±3,042)	27.3 (±1.9)	12.6 (±1.8)	0.2 (±0.2)	0.0(±0.1)	49.8 (±1.1)	0.3 (±0.2)	8.3 (±0.9)	0.1 (±0.2)	0.3 (±0.2)	0.5 (±0.3)	0.4 (±0.3)
139	201,587	148,447	117,570 (±3,309)	28.6 (±1.6)	44.4 (±1.7)	0.3 (±0.2)	0.4(±0.2)	19.8 (±0.8)	0.2 (±0.2)	5.6 (±0.7)	0.1 (±0.2)	0.2 (±0.2)	0.2 (±0.2)	0.1 (±0.1)
140	189,307	131,982	76,480 (±2,503)	67.9 (±2.0)	16.5 (±1.2)	0.1 (±0.2)	0.2(±0.2)	11.4 (±0.9)	0.3 (±0.2)	3.4 (±0.7)	0.0 (±0.2)	0.1 (±0.2)	0.0 (±0.2)	0.0 (±0.2)
141	200,144	141,087	109,650 (±3,532)	26.4 (±1.6)	57.8 (±1.9)	0.4 (±0.2)	0.5(±0.3)	12.8 (±1.0)	0.1 (±0.1)	1.6 (±0.4)	0.1 (±0.2)	0.1 (±0.1)	0.1 (±0.2)	0.1 (±0.1)
142	191,665	137,410	109,905 (±4,502)	30.3 (±1.6)	45.7 (±2.2)	0.2 (±0.2)	0.0(±0.1)	21.2 (±1.1)	0.2 (±0.2)	1.5 (±0.4)	0.0 (±0.1)	0.4 (±0.3)	0.1 (±0.1)	0.2 (±0.2)
143	189,857	136,172	99,330 (±2,957)	58.7 (±1.7)	22.2 (±1.5)	0.3 (±0.2)	0.1(±0.2)	16.8 (±1.0)	0.2 (±0.2)	1.4 (±0.4)	0.0 (±0.1)	0.2 (±0.2)	0.0 (±0.1)	0.1 (±0.2)
144	198,870	142,560	98,830 (±2,903)	67.4 (±1.7)	8.8 (±1.0)	0.2 (±0.2)	0.0(±0.2)	21.7 (±1.1)	0.1 (±0.2)	1.1 (±0.4)	0.0 (±0.2)	0.3 (±0.2)	0.1 (±0.2)	0.2 (±0.2)
145	190,145	142,189	108,680 (±3,321)	54.6 (±1.9)	14.3 (±1.3)	0.2 (±0.2)	0.3(±0.3)	25.4 (±1.1)	0.1 (±0.1)	4.7 (±0.6)	0.0 (±0.1)	0.1 (±0.2)	0.2 (±0.2)	0.1 (±0.1)
146	195,765	148,478	111,130 (±3,109)	18.8 (±1.3)	47.0 (±1.8)	0.2 (±0.2)	0.0(±0.1)	26.7 (±1.0)	0.3 (±0.2)	6.4 (±0.7)	0.1 (±0.2)	0.2 (±0.2)	0.3 (±0.2)	0.1 (±0.2)
147	188,773	153,698	120,469 (±3,323)	23.3 (±1.4)	40.5 (±1.5)	0.5 (±0.2)	0.1(±0.1)	29.1 (±1.0)	0.2 (±0.2)	5.4 (±0.6)	0.1 (±0.1)	0.2 (±0.2)	0.4 (±0.2)	0.2 (±0.2)
148	199,098	152,248	111,075 (±3,007)	45.3 (±1.7)	9.9 (±1.1)	0.4 (±0.2)	0.0(±0.1)	39.6 (±0.9)	0.1 (±0.1)	3.8 (±0.5)	0.1 (±0.2)	0.4 (±0.2)	0.3 (±0.2)	0.2 (±0.2)
149	200,119	150,539	118,195 (±3,630)	30.2 (±1.9)	23.3 (±1.7)	0.3 (±0.2)	0.1(±0.2)	24.3 (±1.3)	0.3 (±0.2)	20.6 (±1.3)	0.0 (±0.1)	0.3 (±0.2)	0.4 (±0.2)	0.2 (±0.1)
150	201,768	146,856	125,645 (±3,086)	17.2 (±1.2)	10.7 (±1.1)	0.3 (±0.2)	0.0(±0.1)	63.4 (±1.3)	0.4 (±0.3)	6.7 (±0.7)	0.0 (±0.1)	0.3 (±0.2)	0.7 (±0.3)	0.1 (±0.1)

The American Community Survey provided estimated citizen voting age population (CVAP) data at the block group level in a Special Tabulation. Because the MOE can only be calculated using whole block groups, all block groups with more than 50% of the population in a district are included in the analysis. The Red-118 report provides a summary of the block groups used in the analysis.

The percent for each CVAP population category is that group's CVAP divided by the CVAP total.

Numbers in parentheses are margins of error at 90% confidence level.

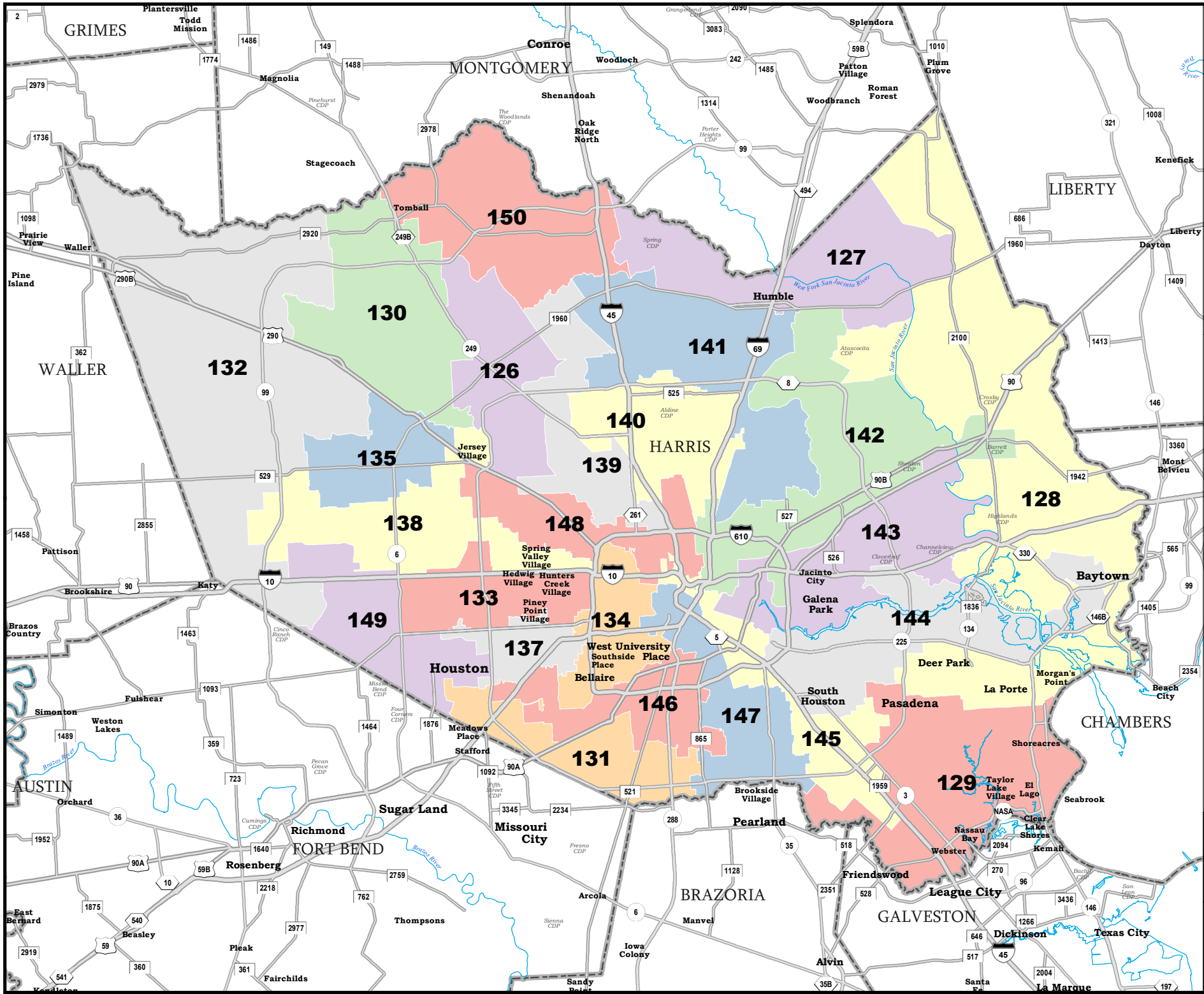
# State House Districts Proposed Plan PLANH2127



COUNTIES
   
 PLANH2127

Map ID 5900  
10/10/21 16:12:18

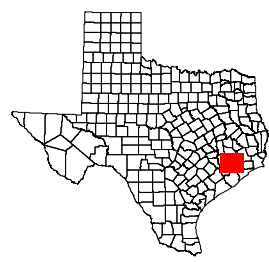




# HARRIS COUNTY

## State House Districts Proposed Plan PLANH2127

 COUNTIES  
 PLANH2127



Map ID 5900  
10/10/21 16:12:18



49494  
2020 Census  
PLANH2127 2021-10-03 18:11:42