

District Population Analysis with County Subtotals
HOUSE DISTRICTS - PLANH2150

Total State Population	29,145,505
Total Districts Required	150
Ideal District Population	194,303
Unassigned Population	27,833,543
Districts in Plan	7
Unassigned Geography	Yes
Districts Contiguous	Yes

	Population	-----Deviation-----	
		Total	Percent
Plan Overall Range		4,518	2.32%
Smallest District (40)	185,455	-8,848	-4.55%
Largest District (35)	189,973	-4,330	-2.23%
Average (mean)	187,423	6,880	3.54%

PLANH2150

District Population Analysis with County Subtotals

HOUSE DISTRICTS - PLANH2150

	Deviation		Total	Anglo	Non-Anglo	Asian	Black	Hispanic	B+H	%Anglo	%Non-Anglo	%Asian	%Black	%Hispanic	%B+H
DISTRICT 35	-4,330	Total:	189,973	13,937	176,036	1,131	1,396	173,443	174,122	7.3	92.7	0.6	0.7	91.3	91.7
	-2.23 %	VAP:	128,155	11,733	116,422	842	849	114,498	114,990	9.2	90.8	0.7	0.7	89.3	89.7
Cameron (16%)			65,616	9,587	56,029	778	889	54,236	54,739	14.6	85.4	1.2	1.4	82.7	83.4
Hidalgo (14%)			124,357	4,350	120,007	353	507	119,207	119,383	3.5	96.5	0.3	0.4	95.9	96.0
DISTRICT 36	-7,572	Total:	186,731	9,878	176,853	1,520	1,066	174,370	174,845	5.3	94.7	0.8	0.6	93.4	93.6
	-3.90 %	VAP:	131,138	8,348	122,790	1,115	633	121,003	121,354	6.4	93.6	0.9	0.5	92.3	92.5
Hidalgo (21%)			186,731	9,878	176,853	1,520	1,066	174,370	174,845	5.3	94.7	0.8	0.6	93.4	93.6
DISTRICT 37	-7,519	Total:	186,784	9,608	177,176	1,375	1,070	174,794	175,319	5.1	94.9	0.7	0.6	93.6	93.9
	-3.87 %	VAP:	132,873	7,896	124,977	1,045	678	123,178	123,556	5.9	94.1	0.8	0.5	92.7	93.0
Cameron (44%)			186,784	9,608	177,176	1,375	1,070	174,794	175,319	5.1	94.9	0.7	0.6	93.6	93.9
DISTRICT 38	-5,522	Total:	188,781	19,717	169,064	1,695	2,009	165,261	166,493	10.4	89.6	0.9	1.1	87.5	88.2
	-2.84 %	VAP:	135,980	17,110	118,870	1,336	1,343	115,810	116,807	12.6	87.4	1.0	1.0	85.2	85.9
Cameron (40%)			168,617	17,912	150,705	1,484	1,451	147,650	148,419	10.6	89.4	0.9	0.9	87.6	88.0
Willacy (100%)			20,164	1,805	18,359	211	558	17,611	18,074	9.0	91.0	1.0	2.8	87.3	89.6
DISTRICT 39	-8,104	Total:	186,199	11,836	174,363	880	978	172,547	172,916	6.4	93.6	0.5	0.5	92.7	92.9
	-4.17 %	VAP:	129,174	10,480	118,694	652	570	117,370	117,613	8.1	91.9	0.5	0.4	90.9	91.1
Hidalgo (21%)			186,199	11,836	174,363	880	978	172,547	172,916	6.4	93.6	0.5	0.5	92.7	92.9
DISTRICT 40	-8,848	Total:	185,455	8,787	176,668	2,579	2,254	171,985	173,468	4.7	95.3	1.4	1.2	92.7	93.5
	-4.55 %	VAP:	128,995	7,071	121,924	1,885	1,638	118,311	119,555	5.5	94.5	1.5	1.3	91.7	92.7
Hidalgo (21%)			185,455	8,787	176,668	2,579	2,254	171,985	173,468	4.7	95.3	1.4	1.2	92.7	93.5
DISTRICT 41	-6,264	Total:	188,039	18,487	169,552	5,364	2,297	161,892	163,285	9.8	90.2	2.9	1.2	86.1	86.8
	-3.22 %	VAP:	138,602	15,717	122,885	4,109	1,479	116,906	117,953	11.3	88.7	3.0	1.1	84.3	85.1
Hidalgo (22%)			188,039	18,487	169,552	5,364	2,297	161,892	163,285	9.8	90.2	2.9	1.2	86.1	86.8

**Population and Voter Data
 with Voter Registration Comparison
 HOUSE DISTRICTS - PLANH2150**

District	Deviation		Population							Total Voter Registration			Non-Suspense Voter Registration				
			Total	%Anglo	%Non-Anglo	%Asian	%Black	%Hispanic	%B+H	General Election	Turnout	Total	SSVR	TO/VR	Total	SSVR	TO/VR
35	-4,330	Total:	189,973	7.3	92.7	0.6	0.7	91.3	91.7	2020	43,037	76,102	79.7 %	56.6 %	70,672	80.4 %	60.9 %
	-2.23%	VAP:	128,155	9.2	90.8	0.7	0.7	89.3	89.7	2018	30,058	69,453	79.8 %	43.3 %	64,823	80.5 %	46.4 %
36	-7,572	Total:	186,731	5.3	94.7	0.8	0.6	93.4	93.6	2020	47,113	85,806	82.9 %	54.9 %	80,384	83.6 %	58.6 %
	-3.90%	VAP:	131,138	6.4	93.6	0.9	0.5	92.3	92.5	2018	31,869	80,229	84.1 %	39.7 %	75,300	84.7 %	42.3 %
37	-7,519	Total:	186,784	5.1	94.9	0.7	0.6	93.6	93.9	2020	48,998	97,924	83.3 %	50.0 %	90,493	83.5 %	54.1 %
	-3.87%	VAP:	132,873	5.9	94.1	0.8	0.5	92.7	93.0	2018	32,515	92,144	84.4 %	35.3 %	85,416	84.8 %	38.1 %
38	-5,522	Total:	188,781	10.4	89.6	0.9	1.1	87.5	88.2	2020	52,253	98,845	76.2 %	52.9 %	89,560	76.9 %	58.3 %
	-2.84%	VAP:	135,980	12.6	87.4	1.0	1.0	85.2	85.9	2018	36,609	93,630	76.7 %	39.1 %	84,594	77.4 %	43.3 %
39	-8,104	Total:	186,199	6.4	93.6	0.5	0.5	92.7	92.9	2020	47,379	87,171	83.7 %	54.4 %	81,602	84.2 %	58.1 %
	-4.17%	VAP:	129,174	8.1	91.9	0.5	0.4	90.9	91.1	2018	32,330	81,271	84.2 %	39.8 %	75,719	84.8 %	42.7 %
40	-8,848	Total:	185,455	4.7	95.3	1.4	1.2	92.7	93.5	2020	45,725	81,197	84.8 %	56.3 %	76,145	85.1 %	60.0 %
	-4.55%	VAP:	128,995	5.5	94.5	1.5	1.3	91.7	92.7	2018	31,391	74,925	85.9 %	41.9 %	70,027	86.4 %	44.8 %
41	-6,264	Total:	188,039	9.8	90.2	2.9	1.2	86.1	86.8	2020	59,342	95,537	72.2 %	62.1 %	87,961	72.8 %	67.5 %
	-3.22%	VAP:	138,602	11.3	88.7	3.0	1.1	84.3	85.1	2018	42,196	89,400	72.3 %	47.2 %	81,557	73.2 %	51.7 %

For technical reasons, election results in Texas Legislative Council reports may vary slightly from the official election results. Complete official results for all elections are maintained by the Office of the Texas Secretary of State.
 SSVR = Spanish surname voter registration

Plan Fit Verification
HOUSE DISTRICTS
PLANH2150 Compared with PLANH2176

The amendment fits into the base plan.

Incumbents by District

HOUSE DISTRICTS - PLANH2150

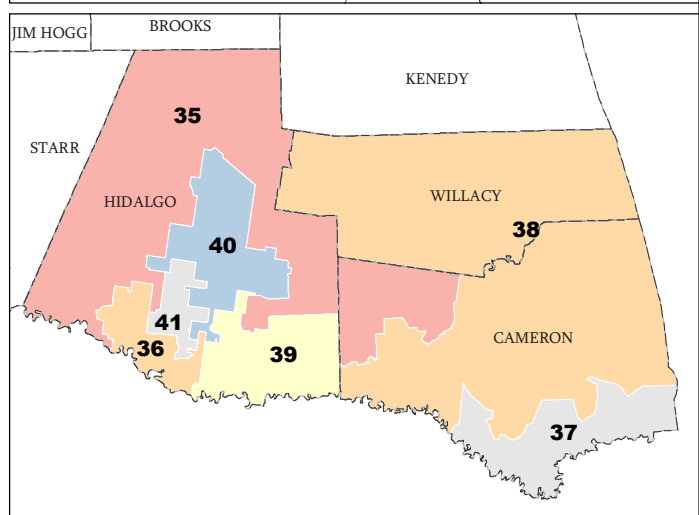
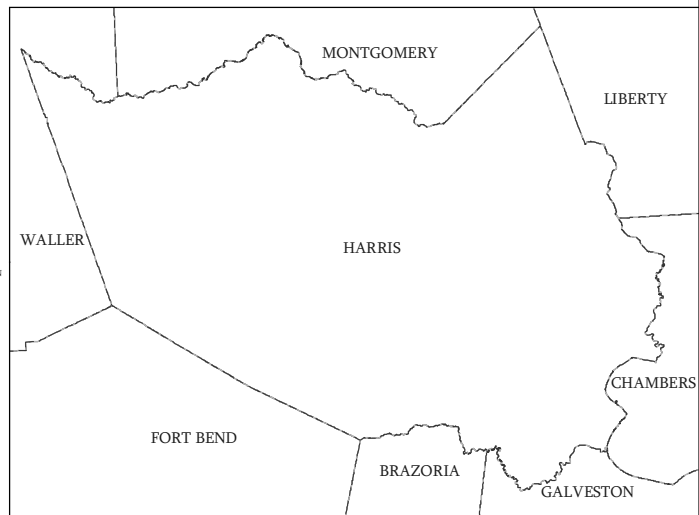
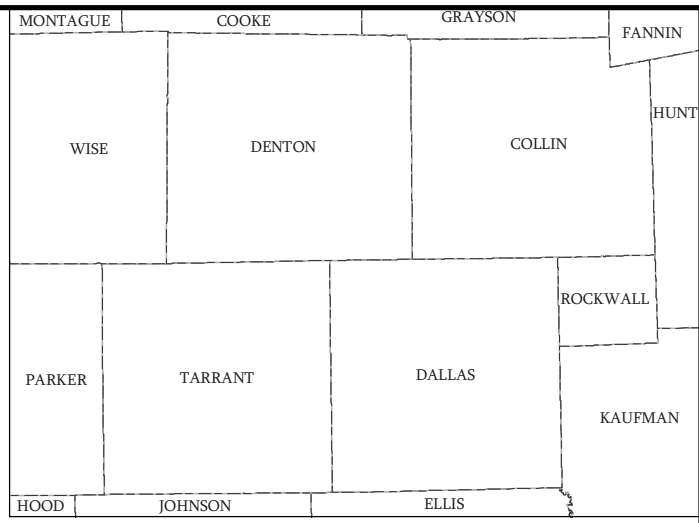
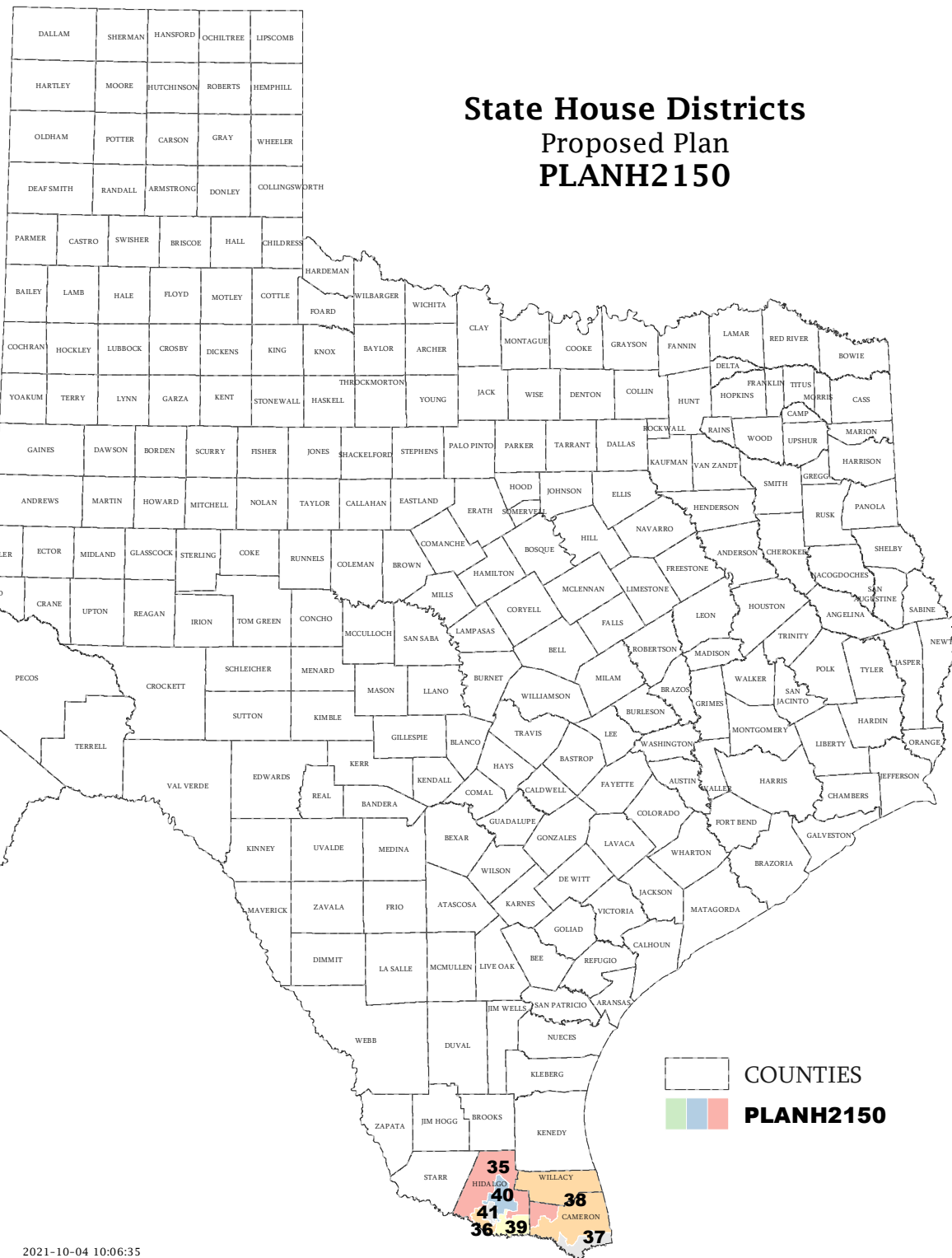
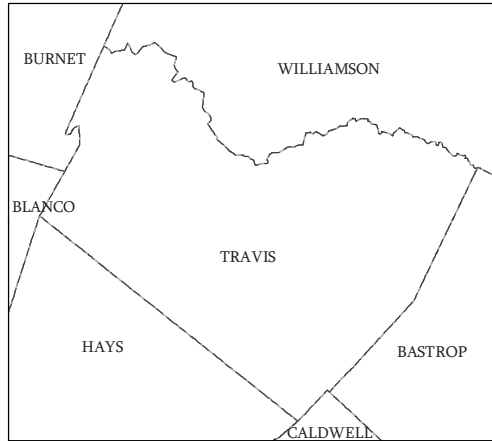
District	Incumbents
35	Longoria - D
36	Muñoz, Jr. - D
37	Dominguez - D
38	Lucio III - D
39	Martinez - D
40	Canales - D
41	Guerra - D

**American Community Survey Special Tabulation
 Using Census and American Community Survey Data
 HOUSE DISTRICTS - PLANH2150**

2020 Census			Special Tabulation of Citizen Voting Age Population (CVAP) from the 2015-2019 American Community Survey with Margins of Error												
			CVAP	Hispanic CVAP % Hispanic	Not Hispanic or Latino Citizen Voting Age Population (CVAP)										
District	Total	VAP			% Black Alone	% Black + White	% Black + American Indian	% White Alone	% American Indian Alone	% Asian Alone	% Native Hawaiian Alone	% American Indian + White	% Asian + White	% Remainder 2 or More Other	
35	189,973	128,155	83,415 (±3,068)	86.9 (±1.6)	0.5 (±0.3)	0.0 (±0.1)	0.0(±0.1)	11.6 (±0.9)	0.2 (±0.2)	0.7 (±0.3)	0.0 (±0.1)	0.1 (±0.2)	0.0 (±0.1)	0.0 (±0.1)	
36	186,731	131,138	87,365 (±3,346)	89.0 (±1.3)	0.3 (±0.3)	0.0 (±0.1)	0.0(±0.1)	10.1 (±1.1)	0.0 (±0.1)	0.4 (±0.3)	0.0 (±0.1)	0.0 (±0.1)	0.0 (±0.1)	0.0 (±0.1)	
37	186,784	132,873	92,015 (±2,733)	90.8 (±1.1)	0.3 (±0.2)	0.0 (±0.2)	0.0(±0.2)	8.3 (±0.9)	0.1 (±0.2)	0.4 (±0.2)	0.0 (±0.2)	0.0 (±0.2)	0.0 (±0.2)	0.0 (±0.2)	
38	188,781	135,980	112,190 (±3,426)	82.9 (±1.5)	0.6 (±0.2)	0.0 (±0.1)	0.0(±0.1)	15.7 (±0.8)	0.1 (±0.2)	0.6 (±0.2)	0.0 (±0.1)	0.0 (±0.1)	0.0 (±0.1)	0.0 (±0.1)	
39	186,199	129,174	92,430 (±3,267)	89.0 (±1.4)	0.2 (±0.2)	0.0 (±0.1)	0.0(±0.1)	10.5 (±0.9)	0.1 (±0.2)	0.1 (±0.2)	0.0 (±0.1)	0.1 (±0.2)	0.0 (±0.1)	0.0 (±0.1)	
40	185,455	128,995	91,630 (±3,345)	90.5 (±1.4)	1.4 (±0.3)	0.0 (±0.1)	0.0(±0.1)	7.3 (±0.8)	0.1 (±0.1)	0.5 (±0.3)	0.0 (±0.1)	0.1 (±0.2)	0.0 (±0.1)	0.0 (±0.1)	
41	188,039	138,602	101,940 (±3,088)	80.3 (±1.4)	0.6 (±0.3)	0.0 (±0.1)	0.0(±0.1)	15.9 (±1.0)	0.2 (±0.2)	2.7 (±0.5)	0.0 (±0.1)	0.1 (±0.1)	0.1 (±0.1)	0.0 (±0.1)	

The American Community Survey provided estimated citizen voting age population (CVAP) data at the block group level in a Special Tabulation. Because the MOE can only be calculated using whole block groups, all block groups with more than 50% of the population in a district are included in the analysis. The Red-118 report provides a summary of the block groups used in the analysis.
 The percent for each CVAP population category is that group's CVAP divided by the CVAP total.
 Numbers in parentheses are margins of error at 90% confidence level.

State House Districts Proposed Plan PLANH2150



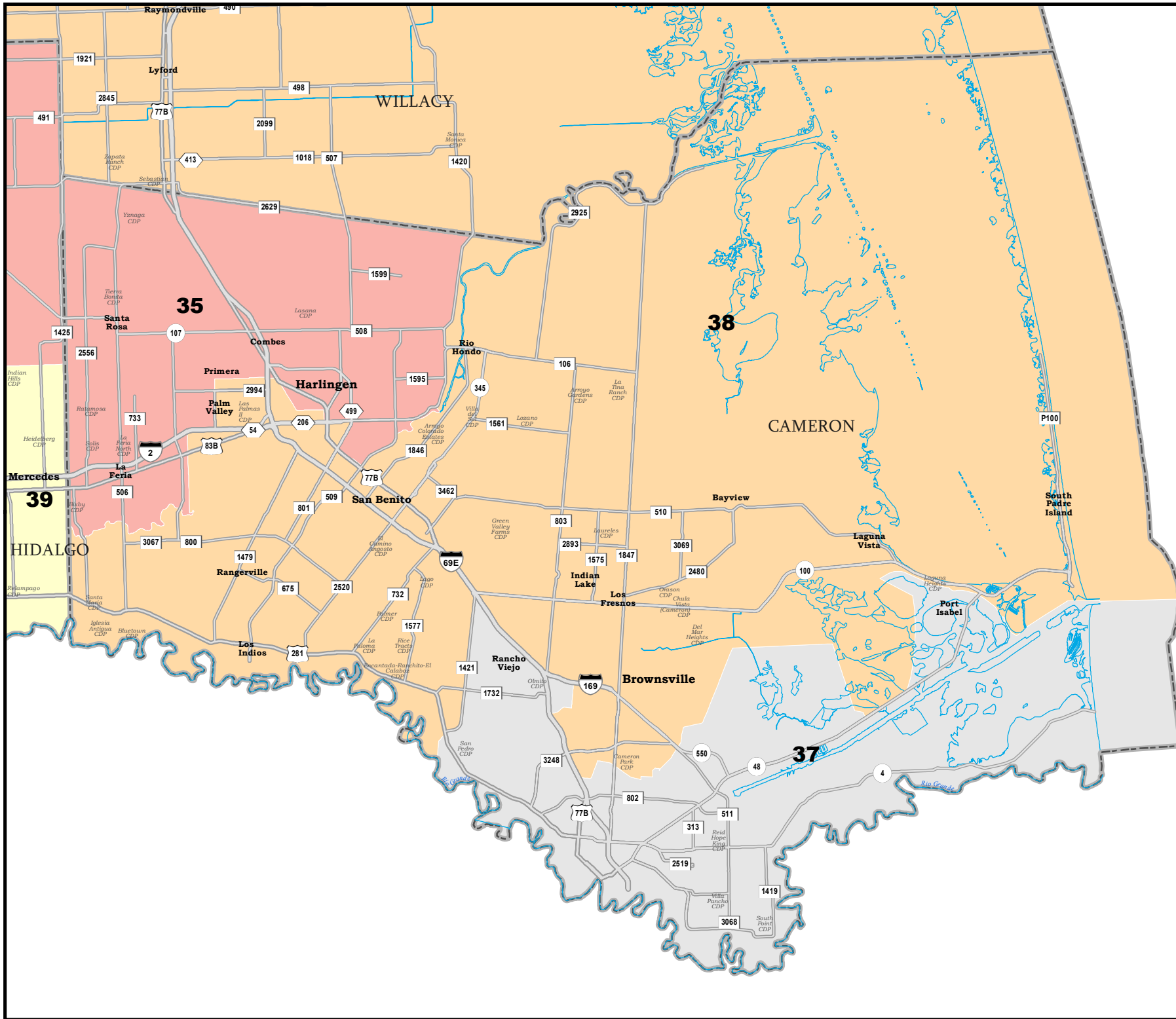
COUNTIES

 PLANH2150

Map ID 5900
10/07/21 20:50:38



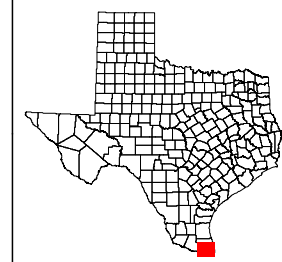
49257
2020 Census
PLANH2150 2021-10-04 10:06:35



CAMERON COUNTY

State House Districts Proposed Plan PLANH2150

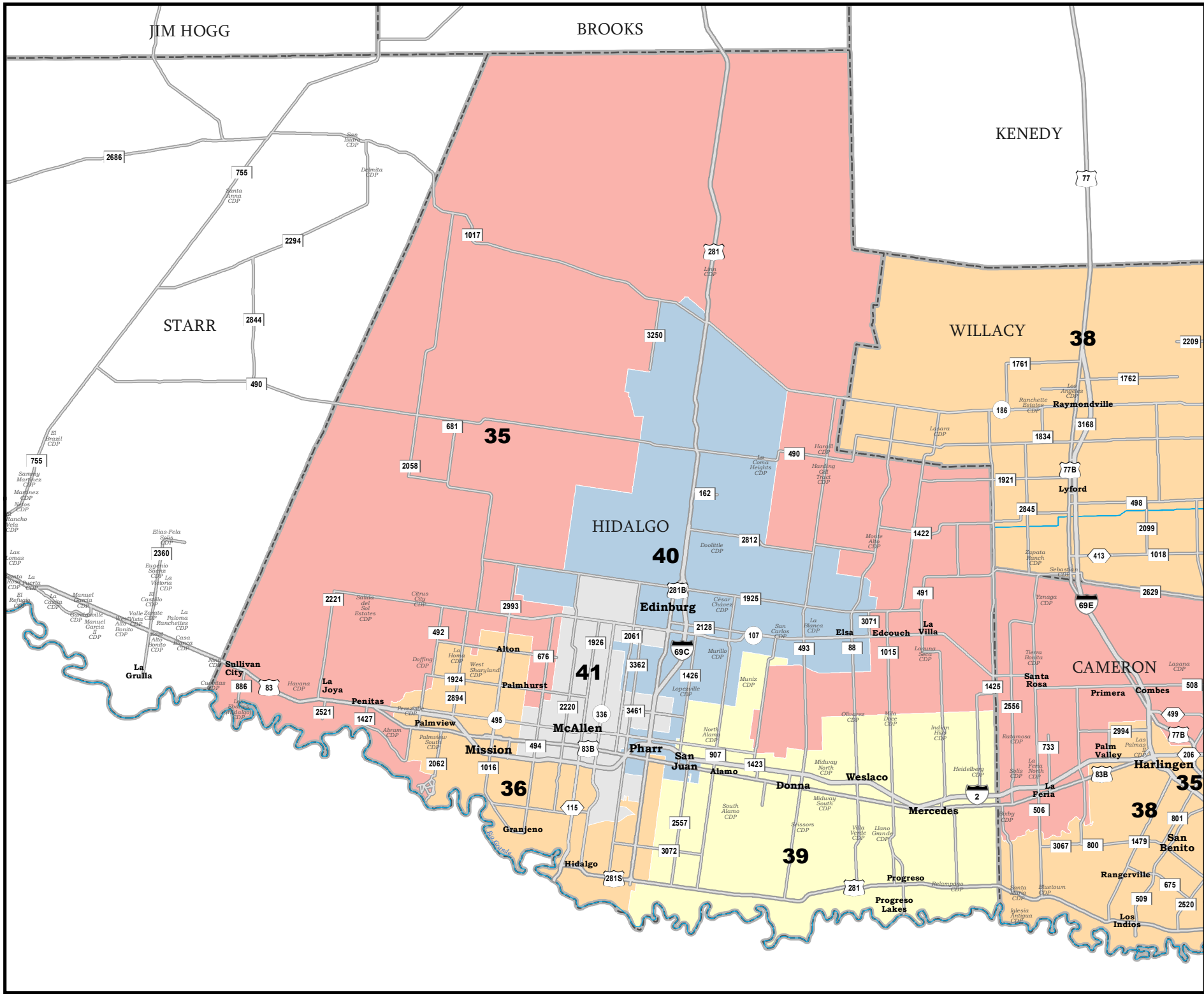
 COUNTIES
 **PLANH2150**



49257
2020 Census
PLANH2150 2021-10-04 10:06:35

Map ID 5900
10/07/21 20:50:38





HIDALGO COUNTY

State House Districts Proposed Plan PLANH2150

 COUNTIES
 PLANH2150

