

District Population Analysis with County Subtotals
HOUSE DISTRICTS - PLANH2211

| | |
|---------------------------|------------|
| Total State Population | 29,145,505 |
| Total Districts Required | 150 |
| Ideal District Population | 194,303 |
| Unassigned Population | 28,758,078 |
| Districts in Plan | 2 |
| Unassigned Geography | Yes |
| Districts Contiguous | Yes |

| | Population | -----Deviation----- | |
|-------------------------|-------------------|----------------------------|----------------|
| | | Total | Percent |
| Plan Overall Range | | 5,993 | 3.09% |
| Smallest District (149) | 190,717 | -3,586 | -1.85% |
| Largest District (132) | 196,710 | 2,407 | 1.24% |
| Average (mean) | 193,714 | 2,997 | 1.55% |

PLANH2211

District Population Analysis with County Subtotals

HOUSE DISTRICTS - PLANH2211

| | Deviation | | Total | Anglo | Non-Anglo | Asian | Black | Hispanic | B+H | %Anglo | %Non-Anglo | %Asian | %Black | %Hispanic | %B+H |
|---------------------|-----------|--------|---------|--------|-----------|--------|--------|----------|---------|--------|------------|--------|--------|-----------|------|
| DISTRICT 132 | 2,407 | Total: | 196,710 | 84,777 | 111,933 | 26,233 | 27,784 | 56,092 | 82,007 | 43.1 | 56.9 | 13.3 | 14.1 | 28.5 | 41.7 |
| | 1.24 % | VAP: | 142,413 | 65,452 | 76,961 | 18,125 | 18,752 | 38,150 | 55,922 | 46.0 | 54.0 | 12.7 | 13.2 | 26.8 | 39.3 |
| Harris (4%) | | | 196,710 | 84,777 | 111,933 | 26,233 | 27,784 | 56,092 | 82,007 | 43.1 | 56.9 | 13.3 | 14.1 | 28.5 | 41.7 |
| DISTRICT 149 | -3,586 | Total: | 190,717 | 25,543 | 165,174 | 36,824 | 53,836 | 75,044 | 126,391 | 13.4 | 86.6 | 19.3 | 28.2 | 39.3 | 66.3 |
| | -1.85 % | VAP: | 142,912 | 21,343 | 121,569 | 30,063 | 37,846 | 53,519 | 89,888 | 14.9 | 85.1 | 21.0 | 26.5 | 37.4 | 62.9 |
| Harris (4%) | | | 190,717 | 25,543 | 165,174 | 36,824 | 53,836 | 75,044 | 126,391 | 13.4 | 86.6 | 19.3 | 28.2 | 39.3 | 66.3 |

**Population and Voter Data
 with Voter Registration Comparison
 HOUSE DISTRICTS - PLANH2211**

| District | Deviation | | Population | | | | | | | | Total Voter Registration | | | Non-Suspense Voter Registration | | | |
|----------|-----------|--------|------------|--------|------------|--------|--------|-----------|------|------------------|--------------------------|---------|--------|---------------------------------|---------|--------|--------|
| | | | Total | %Anglo | %Non-Anglo | %Asian | %Black | %Hispanic | %B+H | General Election | Turnout | Total | SSVR | TO/VR | Total | SSVR | TO/VR |
| 132 | 2,407 | Total: | 196,710 | 43.1 | 56.9 | 13.3 | 14.1 | 28.5 | 41.7 | 2020 | 83,606 | 111,915 | 15.6 % | 74.7 % | 104,231 | 15.7 % | 80.2 % |
| | 1.24% | VAP: | 142,413 | 46.0 | 54.0 | 12.7 | 13.2 | 26.8 | 39.3 | 2018 | 56,114 | 96,718 | 14.8 % | 58.0 % | 88,276 | 15.1 % | 63.6 % |
| 149 | -3,586 | Total: | 190,717 | 13.4 | 86.6 | 19.3 | 28.2 | 39.3 | 66.3 | 2020 | 55,168 | 89,779 | 22.4 % | 61.4 % | 82,526 | 22.8 % | 66.8 % |
| | -1.85% | VAP: | 142,912 | 14.9 | 85.1 | 21.0 | 26.5 | 37.4 | 62.9 | 2018 | 37,449 | 84,997 | 21.8 % | 44.1 % | 76,157 | 22.6 % | 49.2 % |

Plan Fit Verification
HOUSE DISTRICTS
PLANH2211 Compared with PLANH2176

The amendment fits into the base plan.

Incumbents by District

HOUSE DISTRICTS - PLANH2211

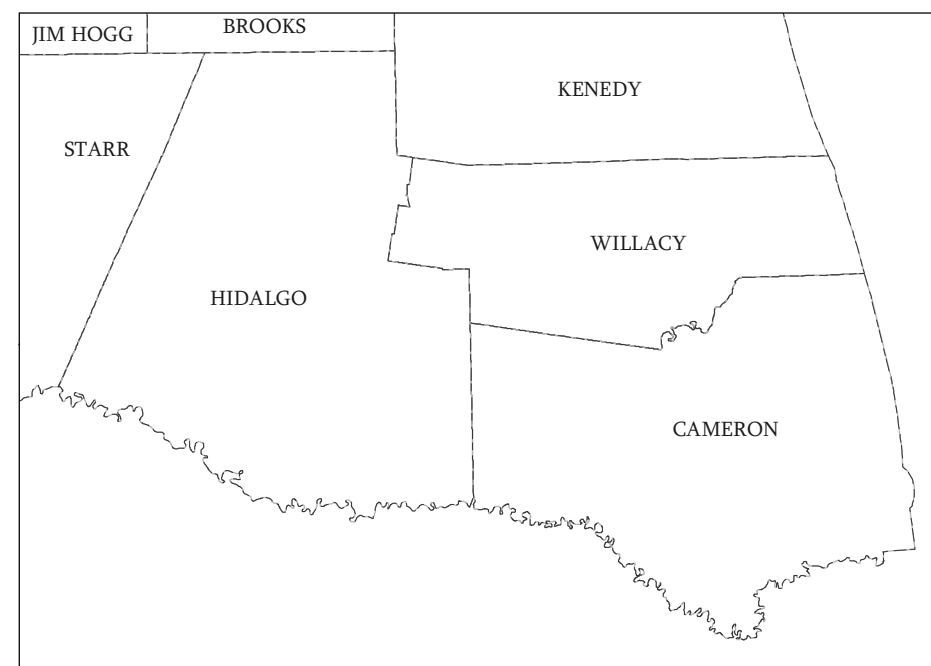
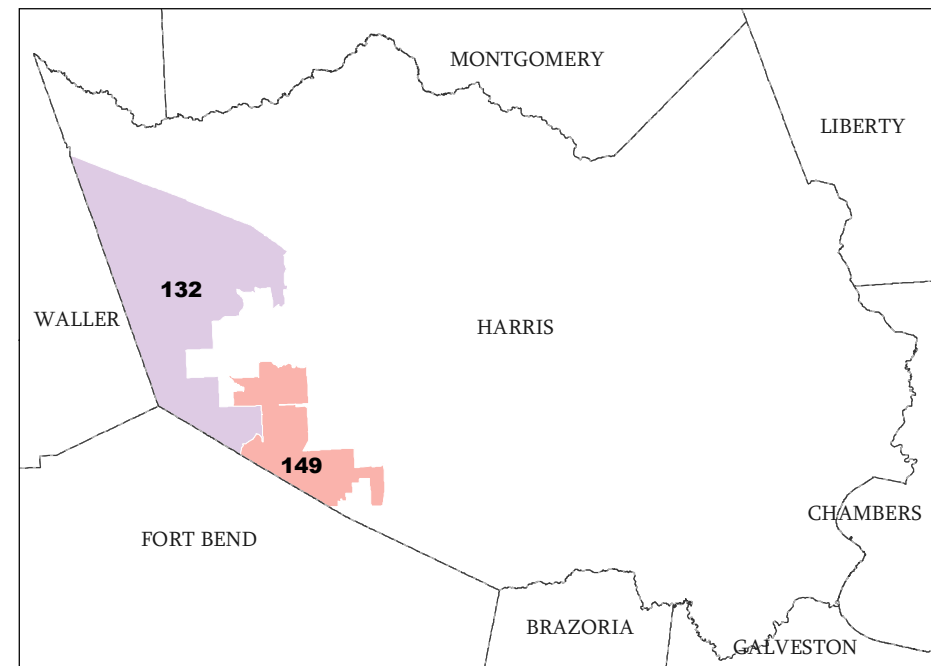
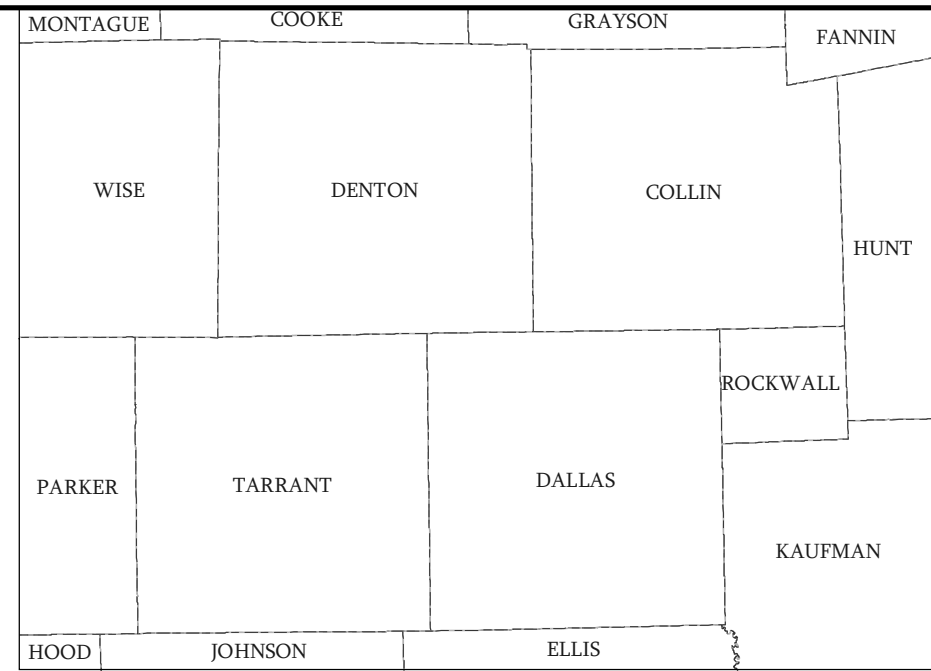
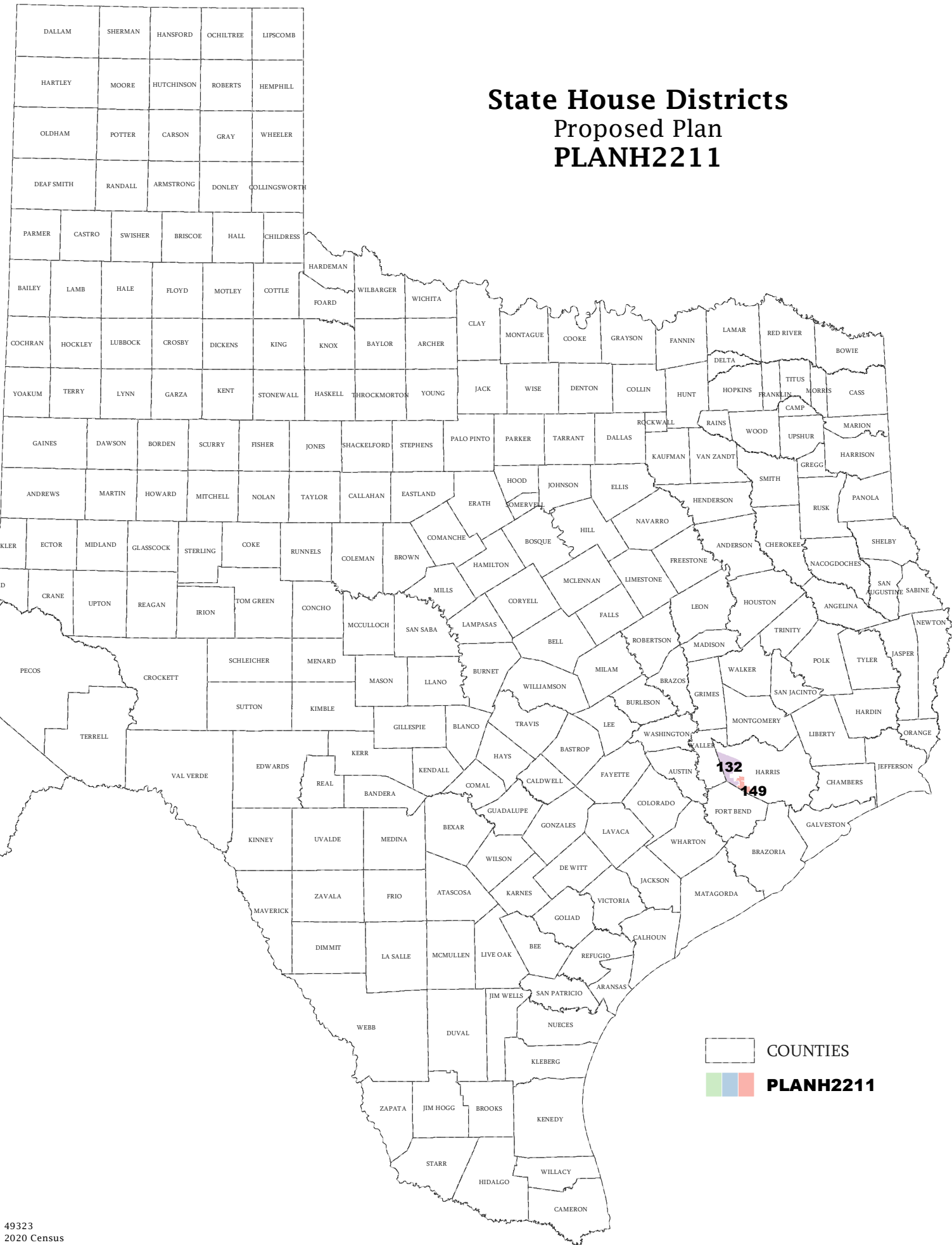
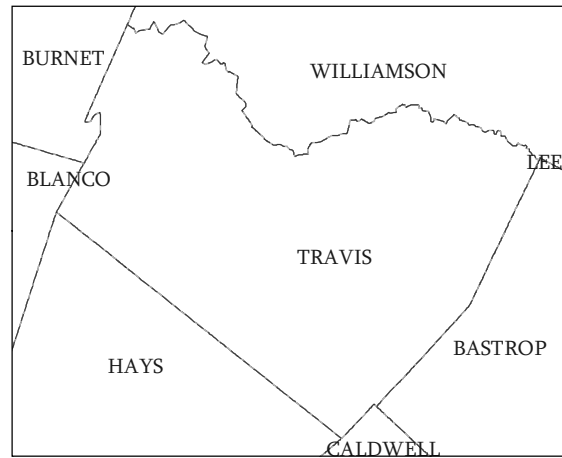
| District | Incumbents |
|----------|---------------|
| 132 | Schofield - R |
| 149 | Vo - D |

American Community Survey Special Tabulation
 Using Census and American Community Survey Data
HOUSE DISTRICTS - PLANH2211

| 2020 Census | | | Special Tabulation of Citizen Voting Age Population (CVAP) from the 2015-2019 American Community Survey with Margins of Error | | | | | | | | | | | | |
|-------------|---------|---------|---|-----------------------------|--|-----------------|---------------------------|---------------|-------------------------|---------------|-------------------------|---------------------------|-----------------|-----------------------------|--|
| | | | CVAP | Hispanic CVAP % Hispanic | Not Hispanic or Latino Citizen Voting Age Population (CVAP) | | | | | | | | | | |
| District | Total | VAP | | | % Black Alone | % Black + White | % Black + American Indian | % White Alone | % American Indian Alone | % Asian Alone | % Native Hawaiian Alone | % American Indian + White | % Asian + White | % Remainder 2 or More Other | |
| 132 | 196,710 | 142,413 | 112,705 (±3,235) | 22.0 (±1.7) | 10.7 (±1.4) | 0.3 (±0.2) | 0.0(±0.1) | 56.8 (±1.2) | 0.5 (±0.3) | 8.5 (±0.9) | 0.0 (±0.1) | 0.4 (±0.2) | 0.5 (±0.2) | 0.4 (±0.3) | |
| 149 | 190,717 | 142,912 | 107,935 (±3,533) | 28.9 (±2.0) | 26.3 (±1.8) | 0.4 (±0.2) | 0.1(±0.2) | 21.7 (±1.3) | 0.3 (±0.2) | 21.4 (±1.3) | 0.0 (±0.1) | 0.2 (±0.2) | 0.5 (±0.3) | 0.2 (±0.2) | |

The American Community Survey provided estimated citizen voting age population (CVAP) data at the block group level in a Special Tabulation. Because the MOE can only be calculated using whole block groups, all block groups with more than 50% of the population in a district are included in the analysis. The Red-118 report provides a summary of the block groups used in the analysis.
 The percent for each CVAP population category is that group's CVAP divided by the CVAP total.
 Numbers in parentheses are margins of error at 90% confidence level.

State House Districts Proposed Plan **PLANH2211**



COUNTIES
 PLANH2211

Map ID 5900
10/08/21 16:46:50

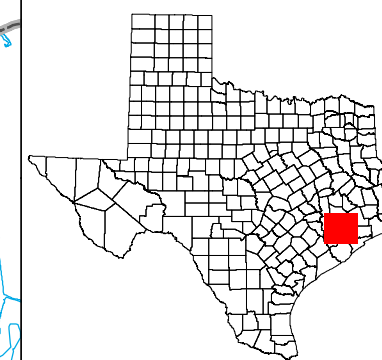


49323
2020 Census
PLANH2211 2021-10-08 16:42:42

HARRIS COUNTY

State House Districts Proposed Plan PLANH2211

 COUNTIES
 **PLANH2211**



Map ID 5900
10/08/21 16:46:50



49323
2020 Census
PLANH2211 2021-10-08 16:42:42

