

District Population Analysis with County Subtotals  
**HOUSE DISTRICTS - PLANH2241**

Total State Population	29,145,505
Total Districts Required	150
Ideal District Population	194,303
Unassigned Population	28,747,146
Districts in Plan	2
Unassigned Geography	Yes
Districts Contiguous	Yes

	<b>Population</b>	<b>-----Deviation-----</b>	
		<b>Total</b>	<b>Percent</b>
Plan Overall Range		1,263	0.65%
Smallest District (76)	198,548	4,245	2.18%
Largest District (26)	199,811	5,508	2.83%
Average (mean)	199,180	4,877	2.51%

PLANH2241

## District Population Analysis with County Subtotals

### HOUSE DISTRICTS - PLANH2241

	Deviation		Total	Anglo	Non-Anglo	Asian	Black	Hispanic	B+H	%Anglo	%Non-Anglo	%Asian	%Black	%Hispanic	%B+H
<b>DISTRICT 26</b>	5,508	Total:	199,811	84,165	115,646	42,159	24,636	46,914	70,234	42.1	57.9	21.1	12.3	23.5	35.2
	2.83 %	VAP:	140,059	62,536	77,523	27,870	16,426	31,505	47,245	44.6	55.4	19.9	11.7	22.5	33.7
Fort Bend (24%)			199,811	84,165	115,646	42,159	24,636	46,914	70,234	42.1	57.9	21.1	12.3	23.5	35.2
<b>DISTRICT 76</b>	4,245	Total:	198,548	40,774	157,774	65,725	47,236	45,075	90,573	20.5	79.5	33.1	23.8	22.7	45.6
	2.18 %	VAP:	148,367	33,153	115,214	49,748	32,779	32,233	64,070	22.3	77.7	33.5	22.1	21.7	43.2
Fort Bend (24%)			198,548	40,774	157,774	65,725	47,236	45,075	90,573	20.5	79.5	33.1	23.8	22.7	45.6

**Population and Voter Data  
 with Voter Registration Comparison  
 HOUSE DISTRICTS - PLANH2241**

District	Deviation		Population								Total Voter Registration			Non-Suspense Voter Registration			
			Total	%Anglo	%Non-Anglo	%Asian	%Black	%Hispanic	%B+H	General Election	Turnout	Total	SSVR	TO/VR	Total	SSVR	TO/VR
26	5,508	Total:	199,811	42.1	57.9	21.1	12.3	23.5	35.2	2020	87,069	113,901	13.9 %	76.4 %	104,649	13.9 %	83.2 %
	2.83%	VAP:	140,059	44.6	55.4	19.9	11.7	22.5	33.7	2018	60,855	99,846	14.0 %	60.9 %	90,549	14.0 %	67.2 %
76	4,245	Total:	198,548	20.5	79.5	33.1	23.8	22.7	45.6	2020	81,643	113,158	15.3 %	72.1 %	105,115	15.5 %	77.7 %
	2.18%	VAP:	148,367	22.3	77.7	33.5	22.1	21.7	43.2	2018	56,543	101,670	15.4 %	55.6 %	92,915	15.7 %	60.9 %

For technical reasons, election results in Texas Legislative Council reports may vary slightly from the official election results. Complete official results for all elections are maintained by the Office of the Texas Secretary of State.  
 SSVR = Spanish surname voter registration

**Plan Fit Verification**  
**HOUSE DISTRICTS**  
**PLANH2241 Compared with PLANH2176**

**The amendment fits into the base plan.**

# Incumbents by District

## HOUSE DISTRICTS - PLANH2241

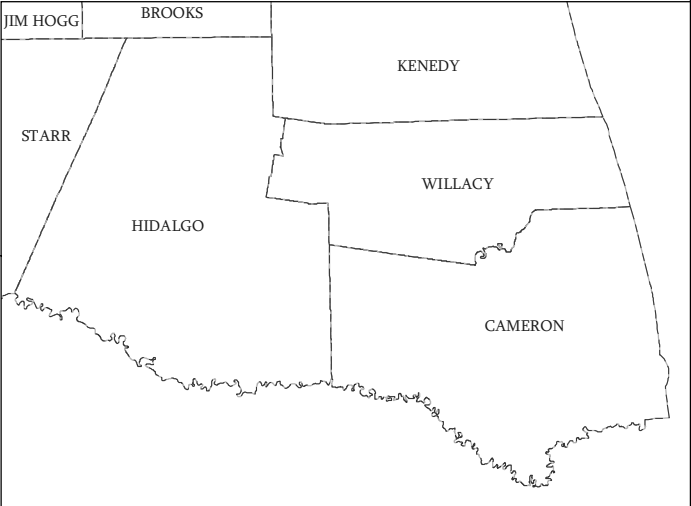
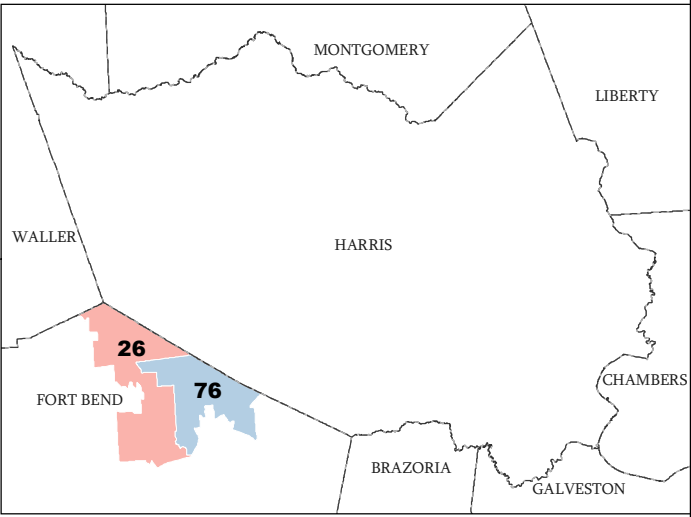
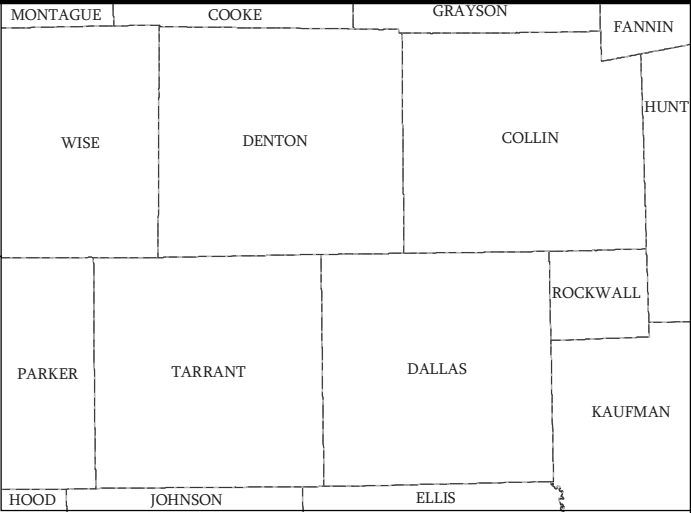
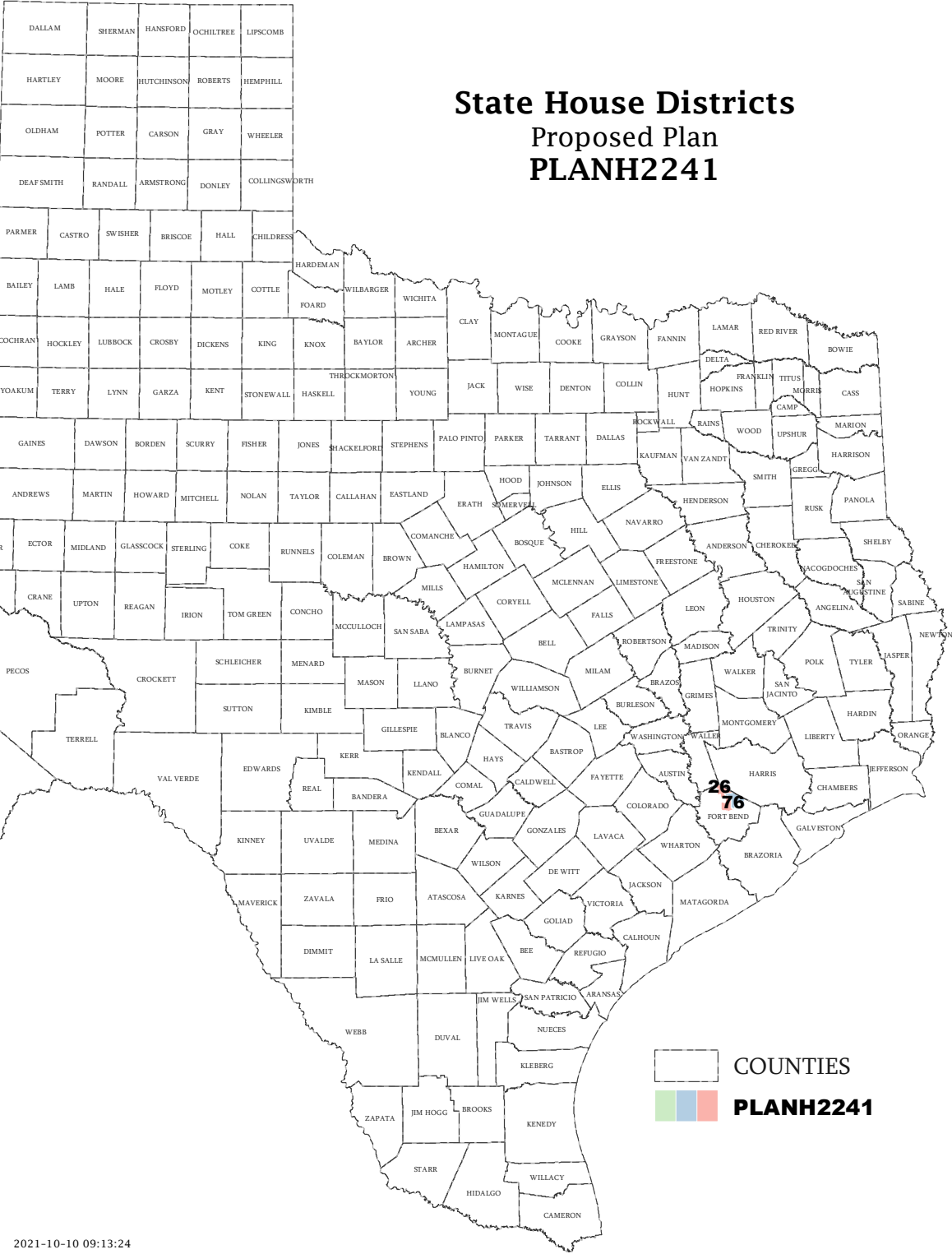
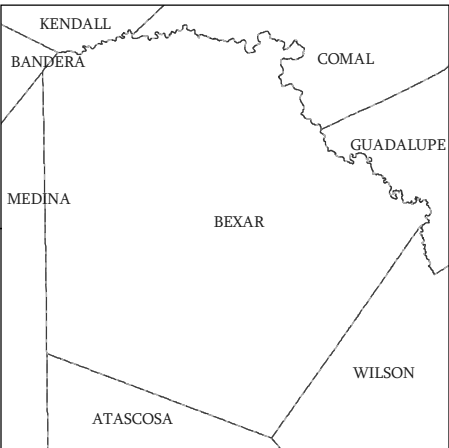
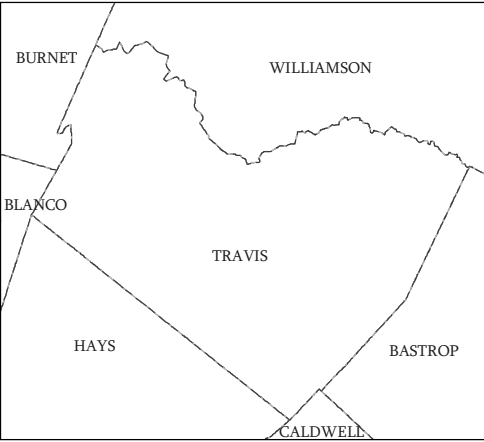
District	Incumbents
26	*Jetton - R *Stephenson - R
76	N/A

**American Community Survey Special Tabulation  
 Using Census and American Community Survey Data  
 HOUSE DISTRICTS - PLANH2241**

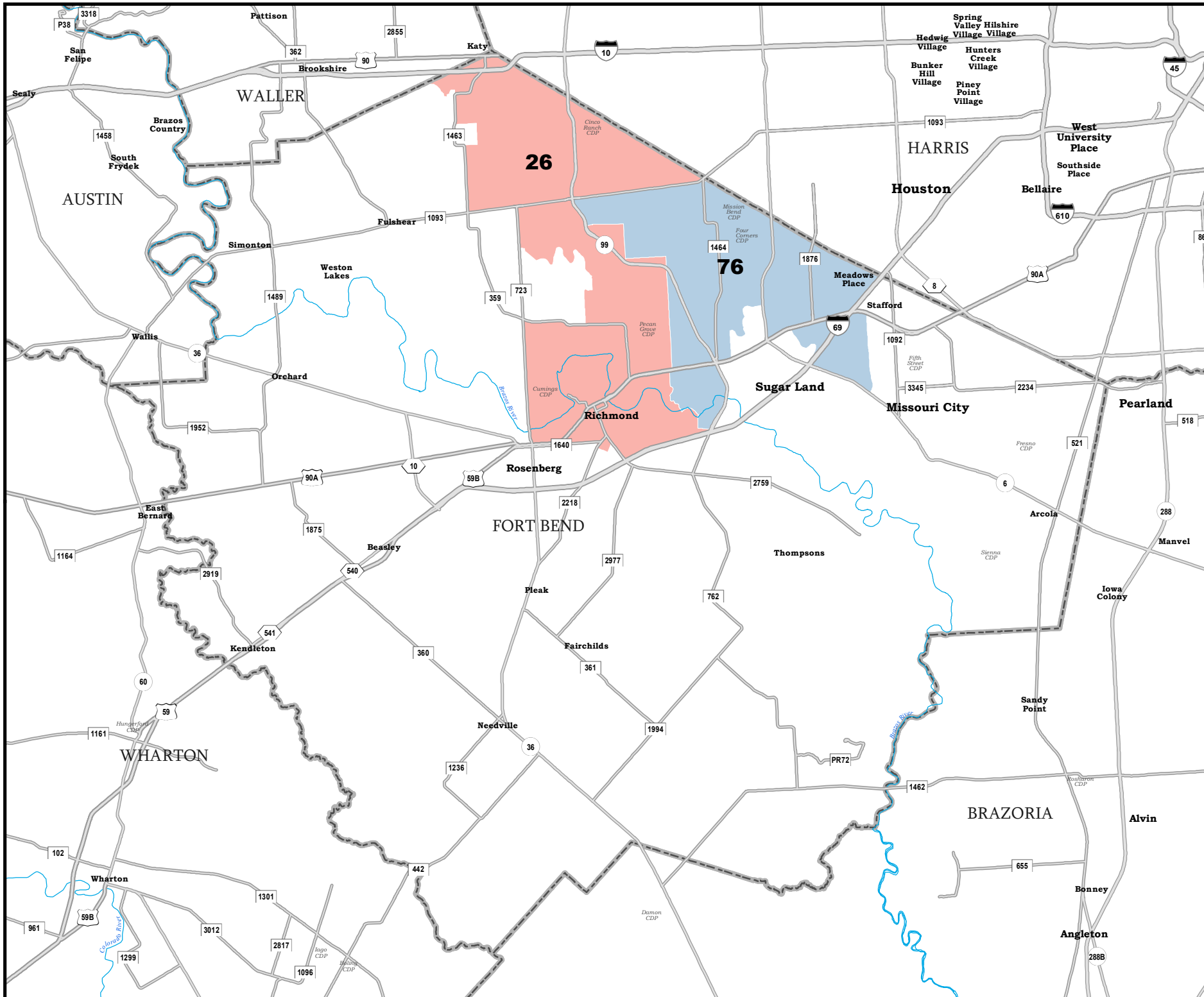
2020 Census			Special Tabulation of Citizen Voting Age Population (CVAP) from the 2015-2019 American Community Survey with Margins of Error												
			CVAP	Hispanic CVAP % Hispanic	Not Hispanic or Latino Citizen Voting Age Population (CVAP)										% Remainder 2 or More Other
Total	VAP	% Black Alone			% Black + White	% Black + American Indian	% White Alone	% American Indian Alone	% Asian Alone	% Native Hawaiian Alone	% American Indian + White	% Asian + White			
District	Total	VAP	CVAP	% Hispanic	% Black Alone	% Black + White	% Black + American Indian	% White Alone	% American Indian Alone	% Asian Alone	% Native Hawaiian Alone	% American Indian + White	% Asian + White	% Remainder 2 or More Other	
26	199,811	140,059	109,075 (±3,920)	20.3 (±1.8)	10.8 (±1.5)	0.4 (±0.4)	0.0(±0.1)	54.6 (±1.5)	0.6 (±0.5)	12.4 (±1.4)	0.0 (±0.1)	0.3 (±0.2)	0.4 (±0.2)	0.2 (±0.2)	
76	198,548	148,367	119,260 (±3,643)	18.2 (±1.7)	22.2 (±1.8)	0.1 (±0.1)	0.0(±0.1)	32.8 (±1.8)	0.2 (±0.2)	25.6 (±1.4)	0.0 (±0.1)	0.2 (±0.1)	0.5 (±0.2)	0.1 (±0.1)	

The American Community Survey provided estimated citizen voting age population (CVAP) data at the block group level in a Special Tabulation. Because the MOE can only be calculated using whole block groups, all block groups with more than 50% of the population in a district are included in the analysis. The Red-118 report provides a summary of the block groups used in the analysis.  
 The percent for each CVAP population category is that group's CVAP divided by the CVAP total.  
 Numbers in parentheses are margins of error at 90% confidence level.

# State House Districts Proposed Plan PLANH2241



COUNTRIES
   
 PLANH2241



# FORT BEND COUNTY

## State House Districts Proposed Plan PLANH2241

 COUNTIES  
 **PLANH2241**

