

District Population Analysis with County Subtotals
HOUSE DISTRICTS - PLANH2244

Total State Population	29,145,505
Total Districts Required	150
Ideal District Population	194,303
Unassigned Population	24,414,360
Districts in Plan	24
Unassigned Geography	Yes
Districts Contiguous	Yes

	Population	-----Deviation-----	
		Total	Percent
Plan Overall Range		18,803	9.68%
Smallest District (138)	184,732	-9,571	-4.93%
Largest District (144)	203,535	9,232	4.75%
Average (mean)	197,131	5,714	2.94%

PLANH2244

District Population Analysis with County Subtotals

HOUSE DISTRICTS - PLANH2244

	Deviation		Total	Anglo	Non-Anglo	Asian	Black	Hispanic	B+H	%Anglo	%Non-Anglo	%Asian	%Black	%Hispanic	%B+H
DISTRICT 126	-5,534	Total:	188,769	85,980	102,789	20,126	32,563	48,245	79,083	45.5	54.5	10.7	17.3	25.6	41.9
	-2.85 %	VAP:	143,434	70,727	72,707	15,035	22,737	32,820	54,735	49.3	50.7	10.5	15.9	22.9	38.2
Harris (4%)			188,769	85,980	102,789	20,126	32,563	48,245	79,083	45.5	54.5	10.7	17.3	25.6	41.9
DISTRICT 127	8,738	Total:	203,041	95,842	107,199	8,907	39,218	56,172	93,467	47.2	52.8	4.4	19.3	27.7	46.0
	4.50 %	VAP:	147,210	74,591	72,619	6,319	26,663	36,773	62,588	50.7	49.3	4.3	18.1	25.0	42.5
Harris (4%)			203,041	95,842	107,199	8,907	39,218	56,172	93,467	47.2	52.8	4.4	19.3	27.7	46.0
DISTRICT 128	-1,448	Total:	192,855	86,155	106,700	4,832	23,245	76,141	97,701	44.7	55.3	2.5	12.1	39.5	50.7
	-0.75 %	VAP:	141,966	69,721	72,245	3,583	15,880	50,056	65,184	49.1	50.9	2.5	11.2	35.3	45.9
Harris (4%)			192,855	86,155	106,700	4,832	23,245	76,141	97,701	44.7	55.3	2.5	12.1	39.5	50.7
DISTRICT 129	8,018	Total:	202,321	98,429	103,892	22,776	19,605	58,882	76,860	48.6	51.4	11.3	9.7	29.1	38.0
	4.13 %	VAP:	157,602	82,034	75,568	17,471	14,033	41,183	54,451	52.1	47.9	11.1	8.9	26.1	34.5
Harris (4%)			202,321	98,429	103,892	22,776	19,605	58,882	76,860	48.6	51.4	11.3	9.7	29.1	38.0
DISTRICT 130	-9,079	Total:	185,224	101,708	83,516	16,511	18,881	45,224	62,959	54.9	45.1	8.9	10.2	24.4	34.0
	-4.67 %	VAP:	132,715	76,987	55,728	11,180	12,483	29,475	41,464	58.0	42.0	8.4	9.4	22.2	31.2
Harris (4%)			185,224	101,708	83,516	16,511	18,881	45,224	62,959	54.9	45.1	8.9	10.2	24.4	34.0
DISTRICT 131	8,874	Total:	203,177	11,851	191,326	14,760	65,408	112,482	174,878	5.8	94.2	7.3	32.2	55.4	86.1
	4.57 %	VAP:	145,821	10,250	135,571	11,819	48,101	76,189	122,519	7.0	93.0	8.1	33.0	52.2	84.0
Harris (4%)			203,177	11,851	191,326	14,760	65,408	112,482	174,878	5.8	94.2	7.3	32.2	55.4	86.1
DISTRICT 132	7,961	Total:	202,264	82,378	119,886	25,958	30,598	61,710	90,331	40.7	59.3	12.8	15.1	30.5	44.7
	4.10 %	VAP:	147,691	64,043	83,648	18,340	21,058	42,443	62,453	43.4	56.6	12.4	14.3	28.7	42.3
Harris (4%)			202,264	82,378	119,886	25,958	30,598	61,710	90,331	40.7	59.3	12.8	15.1	30.5	44.7
DISTRICT 133	-4,695	Total:	189,608	93,802	95,806	27,102	30,836	36,407	65,471	49.5	50.5	14.3	16.3	19.2	34.5
	-2.42 %	VAP:	148,721	76,503	72,218	20,337	23,193	27,153	49,273	51.4	48.6	13.7	15.6	18.3	33.1
Harris (4%)			189,608	93,802	95,806	27,102	30,836	36,407	65,471	49.5	50.5	14.3	16.3	19.2	34.5
DISTRICT 134	2,710	Total:	197,013	115,911	81,102	33,415	15,021	30,240	44,277	58.8	41.2	17.0	7.6	15.3	22.5
	1.39 %	VAP:	163,800	99,276	64,524	25,815	12,137	24,117	35,712	60.6	39.4	15.8	7.4	14.7	21.8
Harris (4%)			197,013	115,911	81,102	33,415	15,021	30,240	44,277	58.8	41.2	17.0	7.6	15.3	22.5
DISTRICT 135	7,820	Total:	202,123	36,517	165,606	19,004	47,797	99,763	144,351	18.1	81.9	9.4	23.6	49.4	71.4
	4.02 %	VAP:	142,854	29,007	113,847	14,235	31,449	67,930	97,761	20.3	79.7	10.0	22.0	47.6	68.4
Harris (4%)			202,123	36,517	165,606	19,004	47,797	99,763	144,351	18.1	81.9	9.4	23.6	49.4	71.4
DISTRICT 137	734	Total:	195,037	28,600	166,437	24,259	39,807	103,255	140,359	14.7	85.3	12.4	20.4	52.9	72.0
	0.38 %	VAP:	146,644	24,542	122,102	18,725	30,278	73,550	101,998	16.7	83.3	12.8	20.6	50.2	69.6
Harris (4%)			195,037	28,600	166,437	24,259	39,807	103,255	140,359	14.7	85.3	12.4	20.4	52.9	72.0

District Population Analysis with County Subtotals

HOUSE DISTRICTS - PLANH2244

	Deviation		Total	Anglo	Non-Anglo	Asian	Black	Hispanic	B+H	%Anglo	%Non-Anglo	%Asian	%Black	%Hispanic	%B+H
DISTRICT 138	-9,571	Total:	184,732	73,930	110,802	22,047	19,348	68,486	86,224	40.0	60.0	11.9	10.5	37.1	46.7
	-4.93 %	VAP:	141,153	61,587	79,566	17,094	13,670	47,555	60,307	43.6	56.4	12.1	9.7	33.7	42.7
Harris (4%)			184,732	73,930	110,802	22,047	19,348	68,486	86,224	40.0	60.0	11.9	10.5	37.1	46.7
DISTRICT 139	9,075	Total:	203,378	26,893	176,485	13,708	70,830	92,427	161,049	13.2	86.8	6.7	34.8	45.4	79.2
	4.67 %	VAP:	148,599	22,179	126,420	10,951	52,513	62,745	114,119	14.9	85.1	7.4	35.3	42.2	76.8
Harris (4%)			203,378	26,893	176,485	13,708	70,830	92,427	161,049	13.2	86.8	6.7	34.8	45.4	79.2
DISTRICT 140	-2,120	Total:	192,183	10,869	181,314	4,120	20,614	157,334	176,420	5.7	94.3	2.1	10.7	81.9	91.8
	-1.09 %	VAP:	134,198	9,352	124,846	3,233	14,833	106,911	121,004	7.0	93.0	2.4	11.1	79.7	90.2
Harris (4%)			192,183	10,869	181,314	4,120	20,614	157,334	176,420	5.7	94.3	2.1	10.7	81.9	91.8
DISTRICT 141	7,196	Total:	201,499	12,361	189,138	4,031	93,325	92,944	183,530	6.1	93.9	2.0	46.3	46.1	91.1
	3.70 %	VAP:	141,907	10,561	131,346	3,130	67,018	61,538	127,127	7.4	92.6	2.2	47.2	43.4	89.6
Harris (4%)			201,499	12,361	189,138	4,031	93,325	92,944	183,530	6.1	93.9	2.0	46.3	46.1	91.1
DISTRICT 142	-680	Total:	193,623	24,315	169,308	5,408	74,405	90,350	162,253	12.6	87.4	2.8	38.4	46.7	83.8
	-0.35 %	VAP:	139,003	19,863	119,140	3,954	55,183	60,008	113,883	14.3	85.7	2.8	39.7	43.2	81.9
Harris (4%)			193,623	24,315	169,308	5,408	74,405	90,350	162,253	12.6	87.4	2.8	38.4	46.7	83.8
DISTRICT 143	6,243	Total:	200,546	20,303	180,243	2,524	26,376	152,087	176,439	10.1	89.9	1.3	13.2	75.8	88.0
	3.21 %	VAP:	143,845	17,244	126,601	1,937	19,229	105,356	123,542	12.0	88.0	1.3	13.4	73.2	85.9
Harris (4%)			200,546	20,303	180,243	2,524	26,376	152,087	176,439	10.1	89.9	1.3	13.2	75.8	88.0
DISTRICT 144	9,232	Total:	203,535	27,531	176,004	6,799	15,543	153,996	167,740	13.5	86.5	3.3	7.6	75.7	82.4
	4.75 %	VAP:	145,854	23,678	122,176	5,173	10,497	106,139	115,757	16.2	83.8	3.5	7.2	72.8	79.4
Harris (4%)			203,535	27,531	176,004	6,799	15,543	153,996	167,740	13.5	86.5	3.3	7.6	75.7	82.4
DISTRICT 145	5,271	Total:	199,574	47,330	152,244	7,187	20,845	123,531	142,964	23.7	76.3	3.6	10.4	61.9	71.6
	2.71 %	VAP:	155,275	41,054	114,221	5,539	16,111	91,481	106,822	26.4	73.6	3.6	10.4	58.9	68.8
Harris (4%)			199,574	47,330	152,244	7,187	20,845	123,531	142,964	23.7	76.3	3.6	10.4	61.9	71.6
DISTRICT 146	-1,501	Total:	192,802	30,428	162,374	16,310	93,522	53,443	144,398	15.8	84.2	8.5	48.5	27.7	74.9
	-0.77 %	VAP:	147,311	25,853	121,458	13,946	71,089	36,616	106,202	17.5	82.5	9.5	48.3	24.9	72.1
Harris (4%)			192,802	30,428	162,374	16,310	93,522	53,443	144,398	15.8	84.2	8.5	48.5	27.7	74.9
DISTRICT 147	6,739	Total:	201,042	42,861	158,181	18,042	66,232	74,421	138,259	21.3	78.7	9.0	32.9	37.0	68.8
	3.47 %	VAP:	162,716	40,306	122,410	15,941	52,354	53,902	104,854	24.8	75.2	9.8	32.2	33.1	64.4
Harris (4%)			201,042	42,861	158,181	18,042	66,232	74,421	138,259	21.3	78.7	9.0	32.9	37.0	68.8
DISTRICT 148	4,557	Total:	198,860	42,323	156,537	18,006	29,478	108,822	136,383	21.3	78.7	9.1	14.8	54.7	68.6
	2.35 %	VAP:	148,046	36,692	111,354	14,216	20,904	75,362	95,267	24.8	75.2	9.6	14.1	50.9	64.3
Harris (4%)			198,860	42,323	156,537	18,006	29,478	108,822	136,383	21.3	78.7	9.1	14.8	54.7	68.6

District Population Analysis with County Subtotals

HOUSE DISTRICTS - PLANH2244

	Deviation		Total	Anglo	Non-Anglo	Asian	Black	Hispanic	B+H	%Anglo	%Non-Anglo	%Asian	%Black	%Hispanic	%B+H
DISTRICT 149	7,958	Total:	202,261	28,457	173,804	39,896	53,764	80,647	131,860	14.1	85.9	19.7	26.6	39.9	65.2
	4.10 %	VAP:	151,750	23,680	128,070	32,431	37,680	57,786	93,946	15.6	84.4	21.4	24.8	38.1	61.9
Harris (4%)			202,261	28,457	173,804	39,896	53,764	80,647	131,860	14.1	85.9	19.7	26.6	39.9	65.2
DISTRICT 150	1,375	Total:	195,678	84,819	110,859	16,707	34,223	57,700	90,012	43.3	56.7	8.5	17.5	29.5	46.0
	0.71 %	VAP:	141,469	65,933	75,536	11,944	23,073	38,265	60,432	46.6	53.4	8.4	16.3	27.0	42.7
Harris (4%)			195,678	84,819	110,859	16,707	34,223	57,700	90,012	43.3	56.7	8.5	17.5	29.5	46.0

Population and Voter Data
 with Voter Registration Comparison
HOUSE DISTRICTS - PLANH2244

District	Deviation		Population							Total Voter Registration			Non-Suspense Voter Registration				
			Total	%Anglo	%Non-Anglo	%Asian	%Black	%Hispanic	%B+H	General Election	Turnout	Total	SSVR	TO/VR	Total	SSVR	TO/VR
126	-5,534 -2.85%	Total:	188,769	45.5	54.5	10.7	17.3	25.6	41.9	2020	87,062	120,736	13.3 %	72.1 %	110,345	13.4 %	78.9 %
		VAP:	143,434	49.3	50.7	10.5	15.9	22.9	38.2	2018	66,467	114,612	12.3 %	58.0 %	103,189	12.5 %	64.4 %
127	8,738 4.50%	Total:	203,041	47.2	52.8	4.4	19.3	27.7	46.0	2020	92,764	128,676	15.6 %	72.1 %	118,991	15.8 %	78.0 %
		VAP:	147,210	50.7	49.3	4.3	18.1	25.0	42.5	2018	68,515	120,437	14.5 %	56.9 %	109,248	14.8 %	62.7 %
128	-1,448 -0.75%	Total:	192,855	44.7	55.3	2.5	12.1	39.5	50.7	2020	68,816	103,685	22.9 %	66.4 %	95,761	23.2 %	71.9 %
		VAP:	141,966	49.1	50.9	2.5	11.2	35.3	45.9	2018	48,870	97,518	21.1 %	50.1 %	88,743	21.5 %	55.1 %
129	8,018 4.13%	Total:	202,321	48.6	51.4	11.3	9.7	29.1	38.0	2020	91,158	126,766	16.9 %	71.9 %	116,369	17.1 %	78.3 %
		VAP:	157,602	52.1	47.9	11.1	8.9	26.1	34.5	2018	68,101	119,400	15.8 %	57.0 %	107,456	16.1 %	63.4 %
130	-9,079 -4.67%	Total:	185,224	54.9	45.1	8.9	10.2	24.4	34.0	2020	86,003	114,163	13.6 %	75.3 %	107,138	13.7 %	80.3 %
		VAP:	132,715	58.0	42.0	8.4	9.4	22.2	31.2	2018	61,206	103,911	12.7 %	58.9 %	95,652	13.0 %	64.0 %
131	8,874 4.57%	Total:	203,177	5.8	94.2	7.3	32.2	55.4	86.1	2020	48,895	82,180	27.5 %	59.5 %	76,006	28.2 %	64.3 %
		VAP:	145,821	7.0	93.0	8.1	33.0	52.2	84.0	2018	36,026	79,426	25.9 %	45.4 %	71,762	26.9 %	50.2 %
132	7,961 4.10%	Total:	202,264	40.7	59.3	12.8	15.1	30.5	44.7	2020	83,357	113,937	17.1 %	73.2 %	105,579	17.3 %	79.0 %
		VAP:	147,691	43.4	56.6	12.4	14.3	28.7	42.3	2018	54,824	97,184	16.4 %	56.4 %	88,181	16.8 %	62.2 %
133	-4,695 -2.42%	Total:	189,608	49.5	50.5	14.3	16.3	19.2	34.5	2020	83,669	111,373	8.9 %	75.1 %	101,382	8.7 %	82.5 %
		VAP:	148,721	51.4	48.6	13.7	15.6	18.3	33.1	2018	65,820	105,154	8.5 %	62.6 %	93,692	8.4 %	70.3 %
134	2,710 1.39%	Total:	197,013	58.8	41.2	17.0	7.6	15.3	22.5	2020	107,348	138,586	8.1 %	77.5 %	126,229	8.0 %	85.0 %
		VAP:	163,800	60.6	39.4	15.8	7.4	14.7	21.8	2018	87,306	130,021	8.0 %	67.1 %	116,244	8.0 %	75.1 %
135	7,820 4.02%	Total:	202,123	18.1	81.9	9.4	23.6	49.4	71.4	2020	63,908	97,431	30.0 %	65.6 %	91,026	30.7 %	70.2 %
		VAP:	142,854	20.3	79.7	10.0	22.0	47.6	68.4	2018	42,953	87,500	29.1 %	49.1 %	80,082	29.9 %	53.6 %
137	734 0.38%	Total:	195,037	14.7	85.3	12.4	20.4	52.9	72.0	2020	37,968	63,923	21.8 %	59.4 %	57,124	22.0 %	66.5 %
		VAP:	146,644	16.7	83.3	12.8	20.6	50.2	69.6	2018	28,239	61,963	21.3 %	45.6 %	53,694	22.0 %	52.6 %
138	-9,571 -4.93%	Total:	184,732	40.0	60.0	11.9	10.5	37.1	46.7	2020	79,473	108,249	17.8 %	73.4 %	100,942	17.8 %	78.7 %
		VAP:	141,153	43.6	56.4	12.1	9.7	33.7	42.7	2018	62,014	104,215	17.1 %	59.5 %	95,356	17.2 %	65.0 %
139	9,075 4.67%	Total:	203,378	13.2	86.8	6.7	34.8	45.4	79.2	2020	66,329	106,075	21.8 %	62.5 %	98,600	22.2 %	67.3 %
		VAP:	148,599	14.9	85.1	7.4	35.3	42.2	76.8	2018	49,791	102,584	20.4 %	48.5 %	93,876	20.9 %	53.0 %
140	-2,120 -1.09%	Total:	192,183	5.7	94.3	2.1	10.7	81.9	91.8	2020	36,472	72,249	61.8 %	50.5 %	68,599	62.8 %	53.2 %
		VAP:	134,198	7.0	93.0	2.4	11.1	79.7	90.2	2018	26,099	68,622	60.8 %	38.0 %	64,239	62.0 %	40.6 %
141	7,196 3.70%	Total:	201,499	6.1	93.9	2.0	46.3	46.1	91.1	2020	47,004	87,421	21.2 %	53.8 %	77,584	22.0 %	60.6 %
		VAP:	141,907	7.4	92.6	2.2	47.2	43.4	89.6	2018	32,954	84,390	19.5 %	39.0 %	73,994	20.4 %	44.5 %
142	-680 -0.35%	Total:	193,623	12.6	87.4	2.8	38.4	46.7	83.8	2020	55,809	90,622	25.4 %	61.6 %	83,898	26.2 %	66.5 %
		VAP:	139,003	14.3	85.7	2.8	39.7	43.2	81.9	2018	38,307	83,740	23.6 %	45.7 %	76,230	24.5 %	50.3 %
143	6,243 3.21%	Total:	200,546	10.1	89.9	1.3	13.2	75.8	88.0	2020	44,348	83,264	57.3 %	53.3 %	77,401	58.6 %	57.3 %
		VAP:	143,845	12.0	88.0	1.3	13.4	73.2	85.9	2018	32,638	80,017	56.3 %	40.8 %	73,818	57.8 %	44.2 %
144	9,232 4.75%	Total:	203,535	13.5	86.5	3.3	7.6	75.7	82.4	2020	46,563	84,851	57.7 %	54.9 %	78,118	58.9 %	59.6 %
		VAP:	145,854	16.2	83.8	3.5	7.2	72.8	79.4	2018	34,083	81,316	56.1 %	41.9 %	73,634	57.6 %	46.3 %
145	5,271 2.71%	Total:	199,574	23.7	76.3	3.6	10.4	61.9	71.6	2020	70,291	110,317	43.0 %	63.7 %	102,282	44.0 %	68.7 %
		VAP:	155,275	26.4	73.6	3.6	10.4	58.9	68.8	2018	54,149	103,767	44.2 %	52.2 %	94,805	45.6 %	57.1 %
146	-1,501 -0.77%	Total:	192,802	15.8	84.2	8.5	48.5	27.7	74.9	2020	69,695	109,123	12.0 %	63.9 %	98,847	12.3 %	70.5 %
		VAP:	147,311	17.5	82.5	9.5	48.3	24.9	72.1	2018	53,349	104,949	11.2 %	50.8 %	93,794	11.6 %	56.9 %

For technical reasons, election results in Texas Legislative Council reports may vary slightly from the official election results. Complete official results for all elections are maintained by the Office of the Texas Secretary of State.
 SSVR = Spanish surname voter registration

**Population and Voter Data
 with Voter Registration Comparison
 HOUSE DISTRICTS - PLANH2244**

District	Deviation		Total	Population						General Election	Turnout	Total Voter Registration			Non-Suspense Voter Registration		
				%Anglo	%Non-Anglo	%Asian	%Black	%Hispanic	%B+H			Total	SSVR	TO/VR	Total	SSVR	TO/VR
147	6,739 3.47%	Total:	201,042	21.3	78.7	9.0	32.9	37.0	68.8	2020	71,638	116,427	19.8 %	61.5 %	103,314	20.8 %	69.3 %
		VAP:	162,716	24.8	75.2	9.8	32.2	33.1	64.4	2018	55,117	111,752	18.8 %	49.3 %	98,359	19.8 %	56.0 %
148	4,557 2.35%	Total:	198,860	21.3	78.7	9.1	14.8	54.7	68.6	2020	60,847	94,310	30.9 %	64.5 %	87,146	31.3 %	69.8 %
		VAP:	148,046	24.8	75.2	9.6	14.1	50.9	64.3	2018	44,985	89,477	29.9 %	50.3 %	81,150	30.6 %	55.4 %
149	7,958 4.10%	Total:	202,261	14.1	85.9	19.7	26.6	39.9	65.2	2020	60,536	97,390	23.4 %	62.2 %	89,936	23.8 %	67.3 %
		VAP:	151,750	15.6	84.4	21.4	24.8	38.1	61.9	2018	41,388	92,023	22.8 %	45.0 %	82,958	23.6 %	49.9 %
150	1,375 0.71%	Total:	195,678	43.3	56.7	8.5	17.5	29.5	46.0	2020	81,109	113,704	16.0 %	71.3 %	105,041	16.2 %	77.2 %
		VAP:	141,469	46.6	53.4	8.4	16.3	27.0	42.7	2018	57,016	102,691	15.2 %	55.5 %	93,361	15.5 %	61.1 %

For technical reasons, election results in Texas Legislative Council reports may vary slightly from the official election results. Complete official results for all elections are maintained by the Office of the Texas Secretary of State.
 SSVR = Spanish surname voter registration

Plan Fit Verification
HOUSE DISTRICTS
PLANH2244 Compared with PLANH2176

The amendment fits into the base plan.

Incumbents by District

HOUSE DISTRICTS - PLANH2244

District	Incumbents
126	Harless - R
127	Huberty - R
128	Cain - R
129	Paul - R
130	Oliverson - R
131	Allen - D
132	*Rosenthal - D *Schofield - R
133	Murphy - R
134	A. Johnson - D
135	N/A
137	Wu - D
138	Hull - R
139	Ja. Johnson - D
140	Walle - D
141	S. Thompson - D
142	Dutton, Jr. - D
143	Hernandez - D
144	Perez - D
145	Morales - D
146	Thierry - D
147	Coleman - D
148	Morales Shaw - D
149	Vo - D
150	Swanson - R

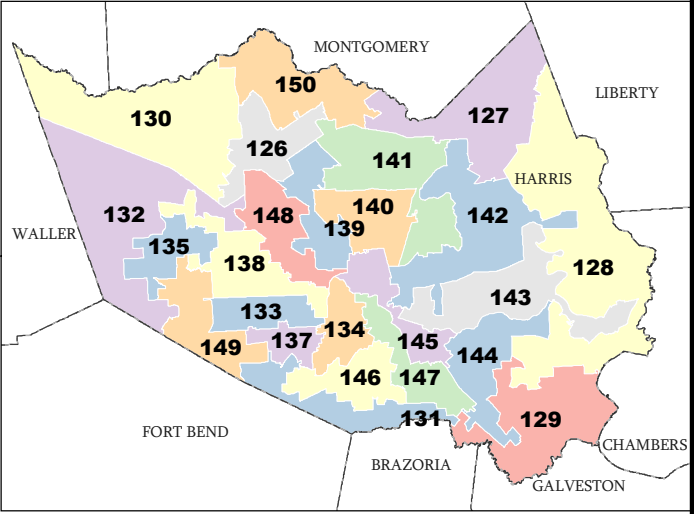
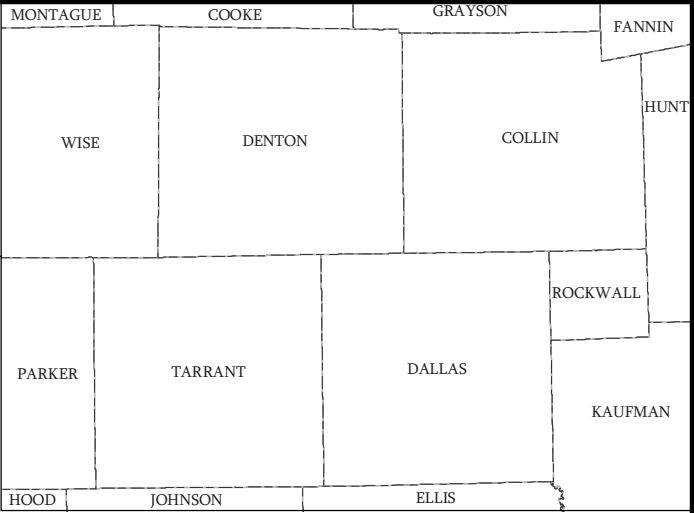
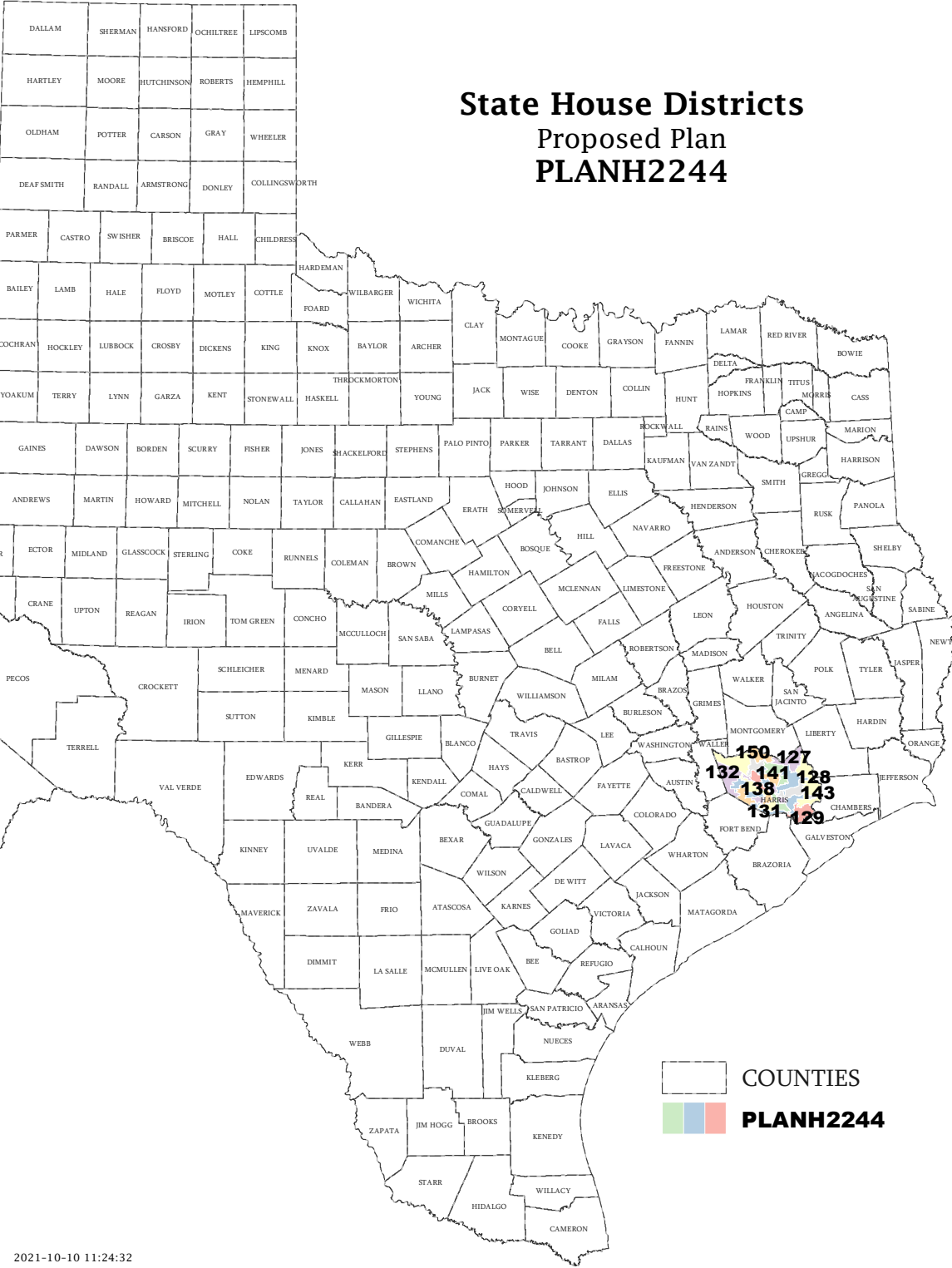
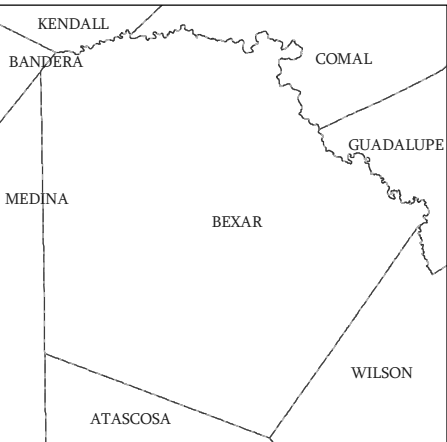
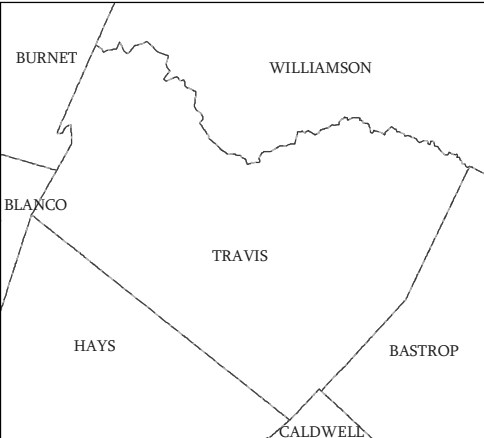
* Incumbents paired.

**American Community Survey Special Tabulation
 Using Census and American Community Survey Data
 HOUSE DISTRICTS - PLANH2244**

Special Tabulation of Citizen Voting Age Population (CVAP) from the 2015-2019 American Community Survey with Margins of Error														
2020 Census			Hispanic CVAP	Not Hispanic or Latino Citizen Voting Age Population (CVAP)										
District	Total	VAP		CVAP	% Hispanic	% Black Alone	% Black + White	% Black + American Indian	% White Alone	% American Indian Alone	% Asian Alone	% Native Hawaiian Alone	% American Indian + White	% Asian + White
126	188,769	143,434	123,330 (±3,369)	16.7 (±1.3)	14.0 (±1.4)	0.3 (±0.2)	0.0(±0.1)	61.1 (±1.2)	0.1 (±0.1)	6.6 (±0.7)	0.1 (±0.1)	0.4 (±0.2)	0.5 (±0.3)	0.1 (±0.2)
127	203,041	147,210	129,230 (±3,261)	21.0 (±1.4)	16.7 (±1.3)	0.4 (±0.2)	0.0(±0.1)	58.5 (±1.2)	0.1 (±0.1)	2.3 (±0.4)	0.3 (±0.3)	0.3 (±0.2)	0.2 (±0.2)	0.3 (±0.3)
128	192,855	141,966	118,840 (±3,233)	28.9 (±1.7)	10.2 (±1.1)	0.3 (±0.2)	0.0(±0.1)	58.0 (±1.2)	0.3 (±0.2)	1.5 (±0.4)	0.0 (±0.1)	0.4 (±0.2)	0.1 (±0.1)	0.2 (±0.1)
129	202,321	157,602	136,765 (±3,016)	23.0 (±1.4)	7.4 (±0.9)	0.5 (±0.2)	0.1(±0.1)	59.1 (±0.9)	0.2 (±0.1)	8.0 (±0.7)	0.0 (±0.1)	0.6 (±0.2)	0.5 (±0.2)	0.4 (±0.3)
130	185,224	132,715	114,150 (±3,179)	17.4 (±1.4)	9.2 (±1.0)	0.1 (±0.1)	0.0(±0.1)	64.6 (±1.3)	0.3 (±0.3)	7.0 (±0.9)	0.0 (±0.1)	0.7 (±0.4)	0.3 (±0.2)	0.3 (±0.3)
131	203,177	145,821	102,850 (±3,394)	35.0 (±1.8)	44.1 (±2.0)	0.1 (±0.2)	0.2(±0.2)	13.1 (±0.9)	0.2 (±0.2)	7.0 (±0.8)	0.0 (±0.1)	0.1 (±0.1)	0.2 (±0.2)	0.1 (±0.2)
132	202,264	147,691	107,770 (±3,145)	22.9 (±1.7)	11.9 (±1.5)	0.4 (±0.2)	0.1(±0.1)	53.7 (±1.2)	0.5 (±0.4)	9.3 (±1.2)	0.0 (±0.1)	0.4 (±0.2)	0.4 (±0.2)	0.5 (±0.4)
133	189,608	148,721	111,775 (±2,804)	14.1 (±1.1)	13.0 (±1.3)	0.2 (±0.2)	0.2(±0.3)	63.4 (±1.0)	0.2 (±0.2)	7.6 (±0.7)	0.0 (±0.1)	0.3 (±0.2)	0.6 (±0.2)	0.1 (±0.2)
134	197,013	163,800	137,355 (±2,883)	12.0 (±0.8)	6.3 (±0.7)	0.3 (±0.2)	0.0(±0.1)	69.7 (±1.0)	0.2 (±0.2)	9.8 (±0.7)	0.0 (±0.1)	0.5 (±0.2)	1.0 (±0.3)	0.2 (±0.2)
135	202,123	142,854	95,670 (±3,587)	37.9 (±2.5)	23.7 (±2.1)	0.2 (±0.2)	0.1(±0.1)	28.5 (±1.8)	0.2 (±0.2)	8.5 (±1.1)	0.1 (±0.2)	0.2 (±0.2)	0.4 (±0.3)	0.1 (±0.1)
137	195,037	146,644	78,335 (±2,685)	30.8 (±1.8)	27.3 (±2.2)	0.2 (±0.2)	0.0(±0.2)	29.4 (±1.4)	0.3 (±0.3)	11.0 (±1.2)	0.0 (±0.2)	0.3 (±0.2)	0.3 (±0.2)	0.2 (±0.3)
138	184,732	141,153	104,750 (±2,777)	24.1 (±1.5)	8.5 (±1.2)	0.4 (±0.3)	0.0(±0.1)	56.9 (±1.1)	0.3 (±0.2)	8.8 (±0.9)	0.0 (±0.1)	0.2 (±0.2)	0.3 (±0.2)	0.4 (±0.2)
139	203,378	148,599	118,345 (±3,361)	28.5 (±1.6)	42.4 (±1.7)	0.3 (±0.2)	0.4(±0.2)	20.1 (±0.8)	0.2 (±0.2)	7.2 (±0.9)	0.1 (±0.2)	0.3 (±0.2)	0.2 (±0.2)	0.2 (±0.2)
140	192,183	134,198	82,585 (±2,683)	69.6 (±2.0)	15.6 (±1.1)	0.1 (±0.2)	0.1(±0.2)	10.9 (±0.9)	0.3 (±0.2)	3.2 (±0.7)	0.0 (±0.2)	0.1 (±0.2)	0.1 (±0.2)	0.0 (±0.2)
141	201,499	141,907	107,125 (±3,498)	26.8 (±1.7)	58.2 (±1.9)	0.4 (±0.2)	0.5(±0.3)	11.8 (±1.0)	0.1 (±0.1)	1.7 (±0.4)	0.1 (±0.2)	0.1 (±0.1)	0.1 (±0.2)	0.1 (±0.2)
142	193,623	139,003	109,910 (±4,452)	31.0 (±1.6)	45.8 (±2.2)	0.3 (±0.2)	0.0(±0.1)	20.2 (±1.1)	0.2 (±0.2)	1.7 (±0.4)	0.0 (±0.1)	0.4 (±0.3)	0.1 (±0.1)	0.3 (±0.2)
143	200,546	143,845	100,165 (±2,971)	60.0 (±1.6)	19.5 (±1.5)	0.3 (±0.2)	0.1(±0.2)	18.5 (±1.0)	0.1 (±0.2)	1.0 (±0.4)	0.0 (±0.2)	0.3 (±0.2)	0.0 (±0.2)	0.1 (±0.2)
144	203,535	145,854	107,960 (±3,248)	64.8 (±1.8)	8.6 (±1.1)	0.2 (±0.2)	0.2(±0.3)	22.8 (±1.1)	0.1 (±0.2)	2.8 (±0.5)	0.0 (±0.1)	0.3 (±0.2)	0.1 (±0.2)	0.0 (±0.1)
145	199,574	155,275	114,900 (±2,892)	53.8 (±1.6)	11.5 (±0.9)	0.1 (±0.2)	0.1(±0.2)	31.8 (±0.9)	0.1 (±0.2)	2.0 (±0.4)	0.1 (±0.2)	0.2 (±0.2)	0.2 (±0.2)	0.1 (±0.2)
146	192,802	147,311	118,560 (±3,453)	15.0 (±1.3)	55.3 (±1.9)	0.3 (±0.2)	0.0(±0.1)	22.8 (±0.9)	0.2 (±0.2)	5.9 (±0.7)	0.1 (±0.2)	0.1 (±0.1)	0.2 (±0.1)	0.1 (±0.2)
147	201,042	162,716	129,899 (±3,439)	24.8 (±1.4)	39.1 (±1.4)	0.6 (±0.3)	0.1(±0.1)	28.7 (±1.0)	0.1 (±0.1)	5.7 (±0.6)	0.1 (±0.1)	0.2 (±0.1)	0.4 (±0.2)	0.2 (±0.2)
148	198,860	148,046	112,655 (±3,278)	36.1 (±1.8)	17.3 (±1.6)	0.3 (±0.2)	0.0(±0.1)	36.5 (±1.1)	0.1 (±0.2)	8.8 (±0.9)	0.1 (±0.2)	0.3 (±0.2)	0.2 (±0.1)	0.2 (±0.2)
149	202,261	151,750	115,685 (±3,616)	29.9 (±1.9)	24.5 (±1.7)	0.4 (±0.2)	0.1(±0.2)	22.7 (±1.2)	0.3 (±0.2)	21.2 (±1.3)	0.0 (±0.1)	0.2 (±0.2)	0.5 (±0.3)	0.2 (±0.2)
150	195,678	141,469	113,180 (±3,001)	20.0 (±1.3)	14.1 (±1.4)	0.3 (±0.2)	0.0(±0.1)	58.2 (±1.2)	0.5 (±0.4)	6.0 (±0.7)	0.0 (±0.1)	0.3 (±0.2)	0.4 (±0.2)	0.2 (±0.2)

The American Community Survey provided estimated citizen voting age population (CVAP) data at the block group level in a Special Tabulation. Because the MOE can only be calculated using whole block groups, all block groups with more than 50% of the population in a district are included in the analysis. The Red-118 report provides a summary of the block groups used in the analysis. The percent for each CVAP population category is that group's CVAP divided by the CVAP total. Numbers in parentheses are margins of error at 90% confidence level.

State House Districts Proposed Plan PLANH2244

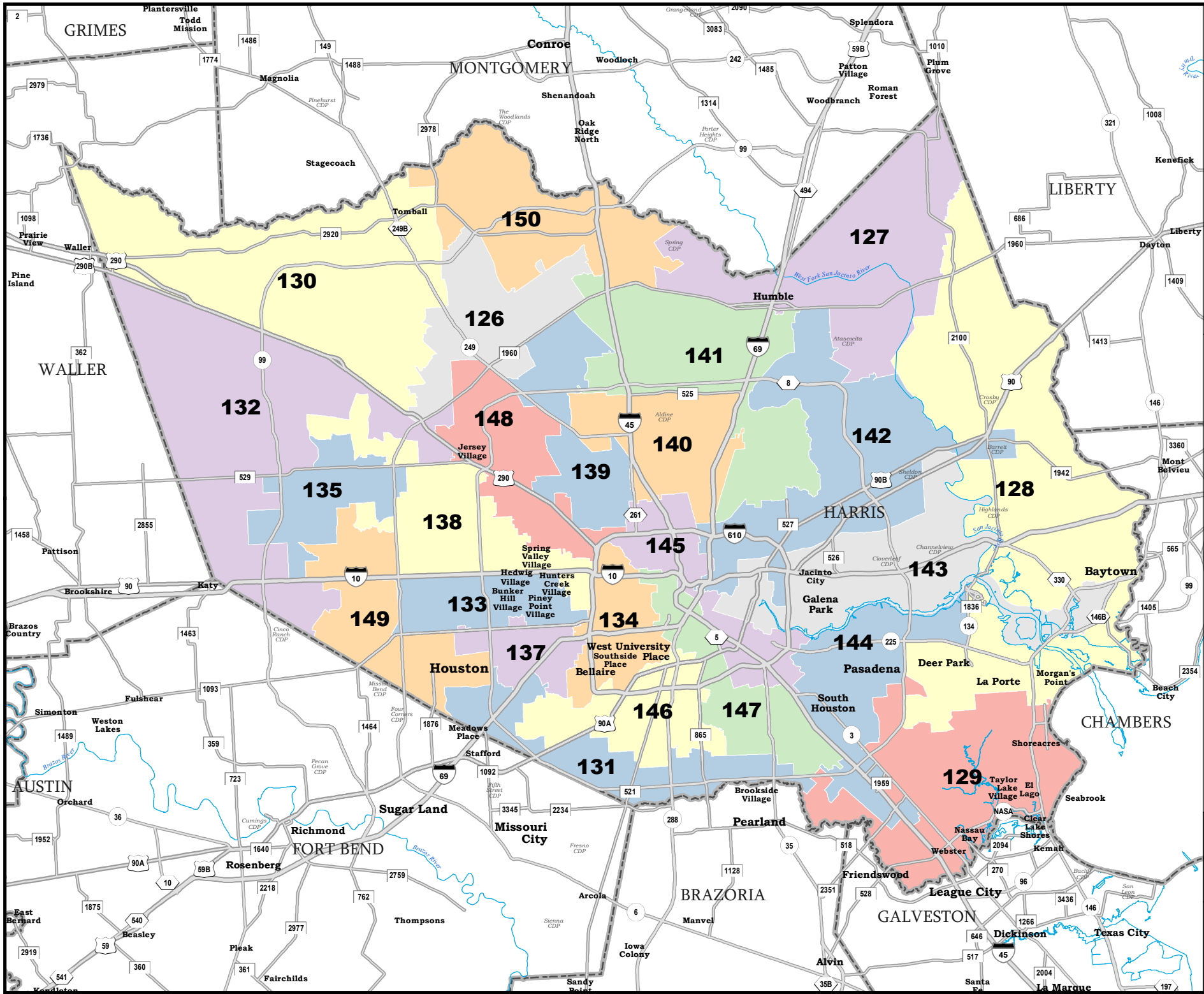


COUNTIES
PLANH2244

Map ID 5900
10/10/21 11:25:44



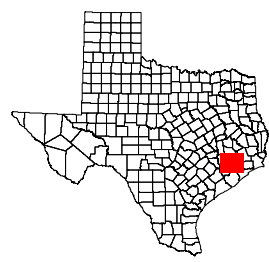
49426
2020 Census
PLANH2244 2021-10-10 11:24:32



HARRIS COUNTY

State House Districts Proposed Plan PLANH2244

 COUNTIES
 PLANH2244



Map ID 5900
10/10/21 11:25:44



49426
2020 Census
PLANH2244 2021-10-10 11:24:32