

District Population Analysis with County Subtotals

HOUSE DISTRICTS - PLANH2245

Total State Population	29,145,505
Total Districts Required	150
Ideal District Population	194,303
Unassigned Population	28,567,613
Districts in Plan	3
Unassigned Geography	Yes
Districts Contiguous	Yes

	Population	-----Deviation-----	
		Total	Percent
Plan Overall Range		10,710	5.51%
Smallest District (6)	187,066	-7,237	-3.72%
Largest District (7)	197,776	3,473	1.79%
Average (mean)	192,631	3,988	2.05%

PLANH2245

District Population Analysis with County Subtotals

HOUSE DISTRICTS - PLANH2245

	Deviation		Total	Anglo	Non-Anglo	Asian	Black	Hispanic	B+H	%Anglo	%Non-Anglo	%Asian	%Black	%Hispanic	%B+H
DISTRICT 5	-1,253	Total:	193,050	125,077	67,973	1,861	26,526	34,075	59,844	64.8	35.2	1.0	13.7	17.7	31.0
	-0.64 %	VAP:	147,064	100,451	46,613	1,281	19,447	21,220	40,377	68.3	31.7	0.9	13.2	14.4	27.5
Camp (100%)			12,464	6,734	5,730	154	2,092	3,222	5,262	54.0	46.0	1.2	16.8	25.9	42.2
Harrison (100%)			68,839	42,039	26,800	718	14,553	9,839	24,107	61.1	38.9	1.0	21.1	14.3	35.0
Marion (100%)			9,725	6,869	2,856	96	2,026	389	2,380	70.6	29.4	1.0	20.8	4.0	24.5
Rains (100%)			12,164	10,130	2,034	103	360	1,109	1,446	83.3	16.7	0.8	3.0	9.1	11.9
Titus (100%)			31,247	13,410	17,837	329	3,347	13,680	16,829	42.9	57.1	1.1	10.7	43.8	53.9
Upshur (100%)			40,892	31,287	9,605	319	3,592	3,986	7,462	76.5	23.5	0.8	8.8	9.7	18.2
Wood (40%)			17,719	14,608	3,111	142	556	1,850	2,358	82.4	17.6	0.8	3.1	10.4	13.3
DISTRICT 6	-7,237	Total:	187,066	135,911	51,155	4,898	20,259	21,008	40,611	72.7	27.3	2.6	10.8	11.2	21.7
	-3.72 %	VAP:	145,248	109,870	35,378	3,451	14,214	13,585	27,538	75.6	24.4	2.4	9.8	9.4	19.0
Smith (69%)			159,942	114,613	45,329	4,673	18,694	17,964	36,061	71.7	28.3	2.9	11.7	11.2	22.5
Wood (60%)			27,124	21,298	5,826	225	1,565	3,044	4,550	78.5	21.5	0.8	5.8	11.2	16.8
DISTRICT 7	3,473	Total:	197,776	87,889	109,887	2,866	50,623	53,357	102,754	44.4	55.6	1.4	25.6	27.0	52.0
	1.79 %	VAP:	148,081	72,353	75,728	2,134	37,142	33,641	70,259	48.9	51.1	1.4	25.1	22.7	47.4
Gregg (100%)			124,239	68,050	56,189	2,137	27,498	24,040	50,879	54.8	45.2	1.7	22.1	19.3	41.0
Smith (31%)			73,537	19,839	53,698	729	23,125	29,317	51,875	27.0	73.0	1.0	31.4	39.9	70.5

**Population and Voter Data
 with Voter Registration Comparison
 HOUSE DISTRICTS - PLANH2245**

District	Deviation		Population								Total Voter Registration			Non-Suspense Voter Registration			
			Total	%Anglo	%Non-Anglo	%Asian	%Black	%Hispanic	%B+H	General Election	Turnout	Total	SSVR	TO/VR	Total	SSVR	TO/VR
5	-1,253	Total:	193,050	64.8	35.2	1.0	13.7	17.7	31.0	2020	84,511	128,245	6.1 %	65.9 %	114,845	6.2 %	73.6 %
	-0.64%	VAP:	147,064	68.3	31.7	0.9	13.2	14.4	27.5	2018	63,454	122,505	5.7 %	51.8 %	109,734	5.7 %	57.8 %
6	-7,237	Total:	187,066	72.7	27.3	2.6	10.8	11.2	21.7	2020	92,631	128,322	4.9 %	72.2 %	118,487	4.9 %	78.2 %
	-3.72%	VAP:	145,248	75.6	24.4	2.4	9.8	9.4	19.0	2018	70,847	118,474	4.6 %	59.8 %	110,882	4.5 %	63.9 %
7	3,473	Total:	197,776	44.4	55.6	1.4	25.6	27.0	52.0	2020	69,699	109,810	9.9 %	63.5 %	99,047	10.2 %	70.4 %
	1.79%	VAP:	148,081	48.9	51.1	1.4	25.1	22.7	47.4	2018	53,143	104,532	8.9 %	50.8 %	93,936	9.2 %	56.6 %

For technical reasons, election results in Texas Legislative Council reports may vary slightly from the official election results. Complete official results for all elections are maintained by the Office of the Texas Secretary of State.
 SSVR = Spanish surname voter registration

Plan Fit Verification
HOUSE DISTRICTS
PLANH2245 Compared with PLANH2176

The amendment fits into the base plan.

Incumbents by District

HOUSE DISTRICTS - PLANH2245

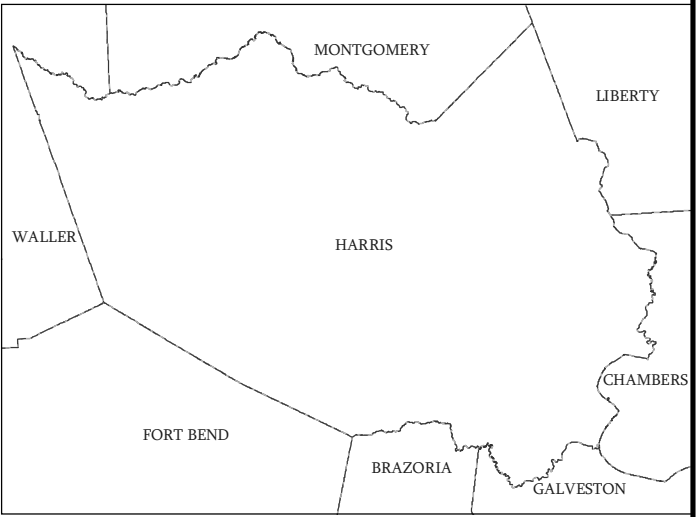
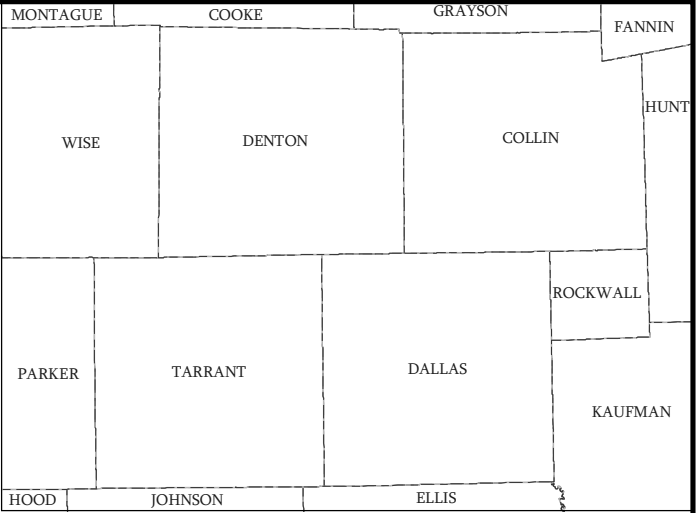
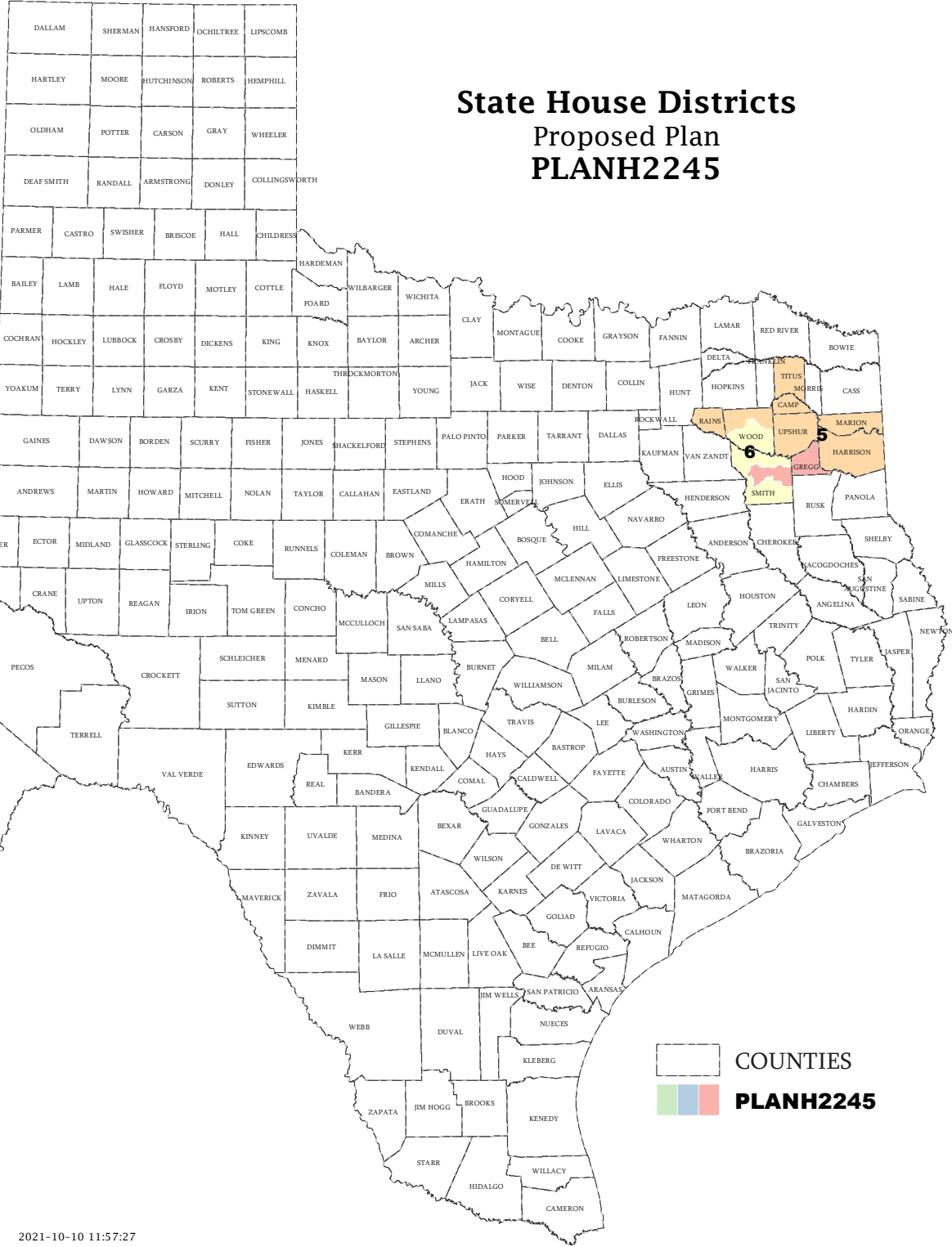
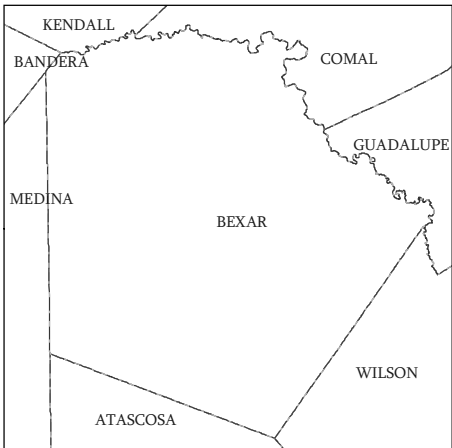
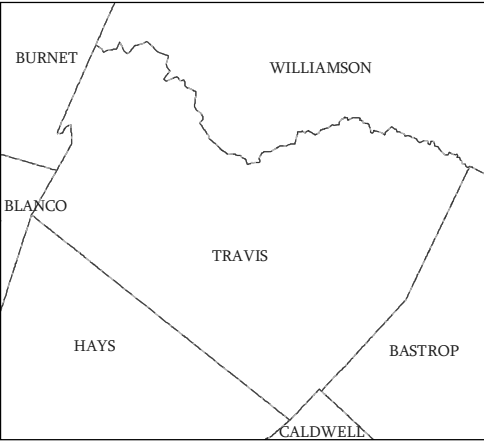
District	Incumbents
5	*Hefner - R *Paddie - R
6	Schaefer - R
7	Dean - R

**American Community Survey Special Tabulation
 Using Census and American Community Survey Data
 HOUSE DISTRICTS - PLANH2245**

2020 Census			Special Tabulation of Citizen Voting Age Population (CVAP) from the 2015-2019 American Community Survey with Margins of Error												
			CVAP	Hispanic CVAP % Hispanic	Not Hispanic or Latino Citizen Voting Age Population (CVAP)										% Remainder 2 or More Other
Total	VAP	% Black Alone			% Black + White	% Black + American Indian	% White Alone	% American Indian Alone	% Asian Alone	% Native Hawaiian Alone	% American Indian + White	% Asian + White			
District	Total	VAP	CVAP	% Hispanic	% Black Alone	% Black + White	% Black + American Indian	% White Alone	% American Indian Alone	% Asian Alone	% Native Hawaiian Alone	% American Indian + White	% Asian + White	% Remainder 2 or More Other	
5	193,050	147,064	135,175 (±3,136)	8.4 (±0.8)	14.4 (±0.9)	0.2 (±0.1)	0.0(±0.1)	75.3 (±0.9)	0.4 (±0.2)	0.4 (±0.2)	0.1 (±0.1)	0.6 (±0.2)	0.1 (±0.1)	0.1 (±0.1)	
6	187,066	145,248	133,255 (±3,444)	6.5 (±0.7)	10.2 (±1.0)	0.2 (±0.2)	0.1(±0.1)	80.5 (±0.9)	0.4 (±0.2)	1.4 (±0.4)	0.1 (±0.1)	0.5 (±0.2)	0.0 (±0.1)	0.1 (±0.1)	
7	197,776	148,081	133,645 (±3,537)	13.7 (±1.1)	26.6 (±1.4)	0.3 (±0.2)	0.1(±0.2)	57.4 (±1.4)	0.3 (±0.2)	0.9 (±0.3)	0.1 (±0.2)	0.4 (±0.2)	0.2 (±0.2)	0.0 (±0.1)	

The American Community Survey provided estimated citizen voting age population (CVAP) data at the block group level in a Special Tabulation. Because the MOE can only be calculated using whole block groups, all block groups with more than 50% of the population in a district are included in the analysis. The Red-118 report provides a summary of the block groups used in the analysis.
 The percent for each CVAP population category is that group's CVAP divided by the CVAP total.
 Numbers in parentheses are margins of error at 90% confidence level.

State House Districts Proposed Plan PLANH2245

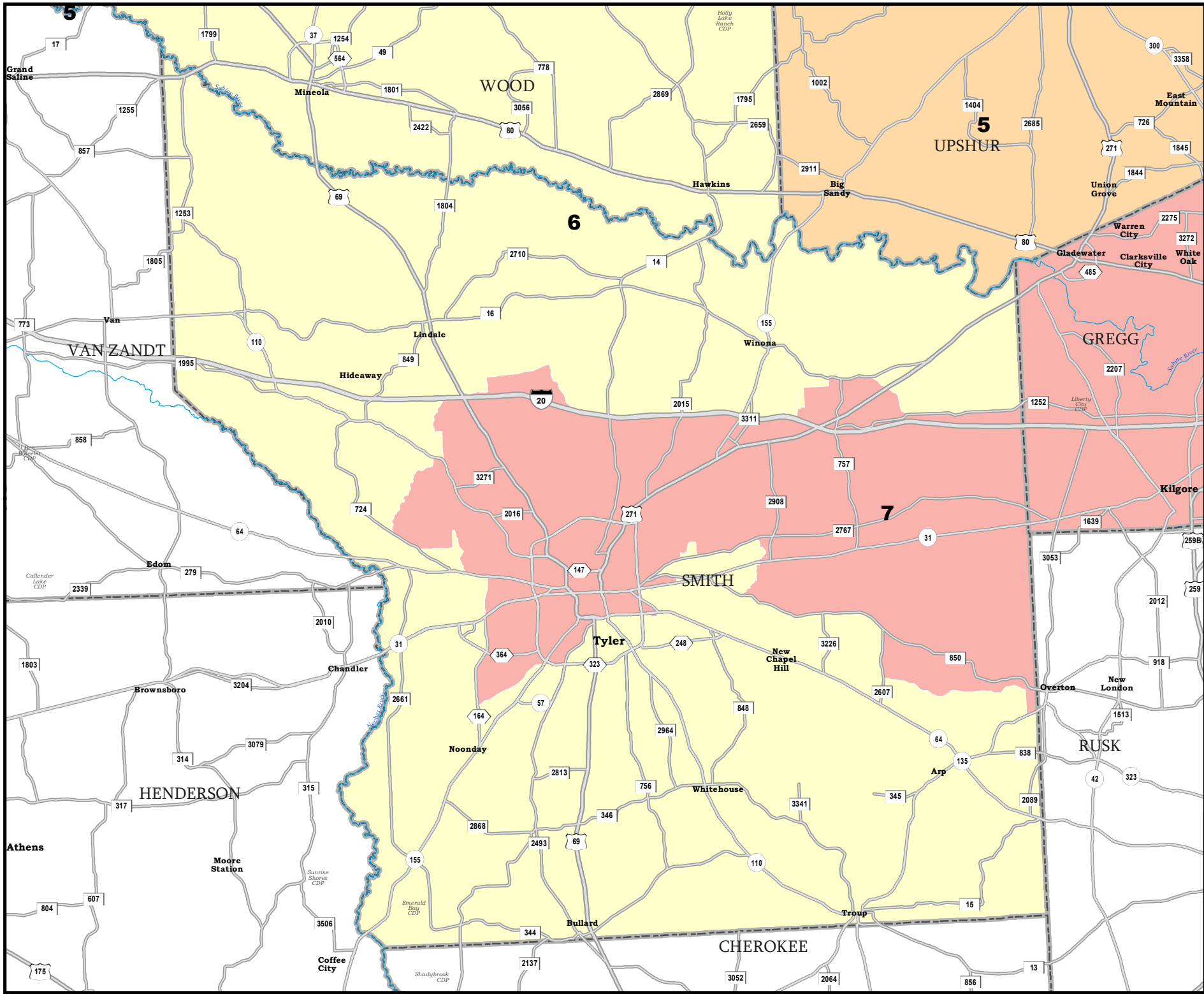


COUNTIES
PLANH2245

Map ID 5900
10/10/21 12:01:12



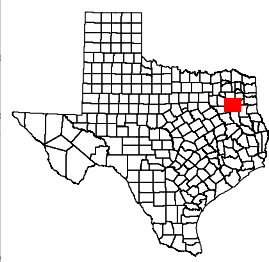
49427
2020 Census
PLANH2245 2021-10-10 11:57:27




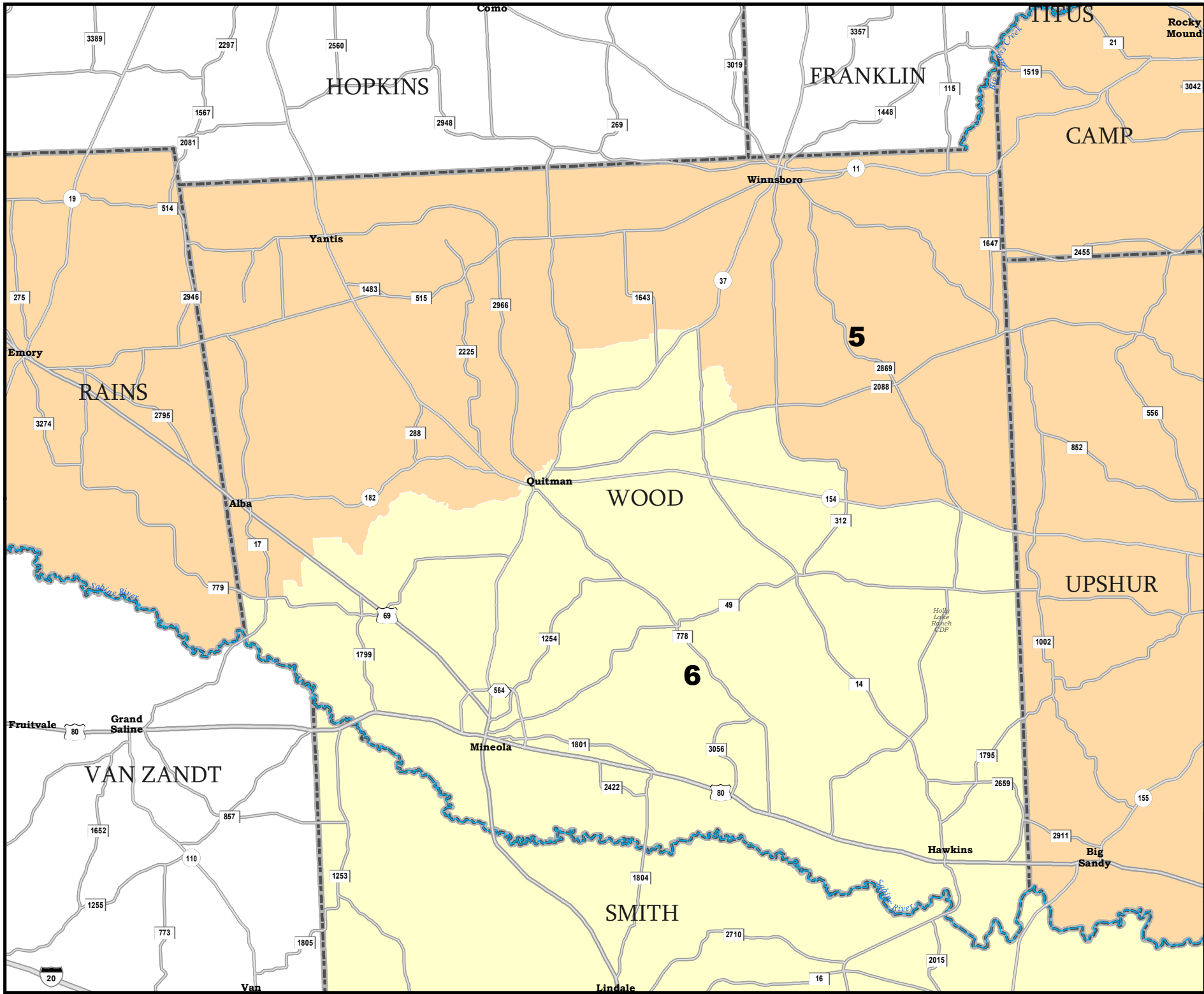
SMITH COUNTY

State House Districts Proposed Plan PLANH2245

 COUNTIES
 **PLANH2245**



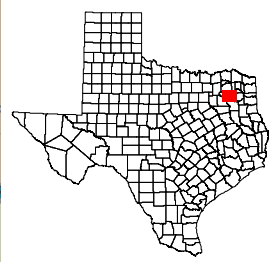
Map ID 5900
 10/10/21 12:01:12
 49427
 2020 Census
 PLANH2245 2021-10-10 11:57:27




WOOD COUNTY

State House Districts Proposed Plan PLANH2245

 COUNTIES
 **PLANH2245**



Map ID 5900
 10/10/21 12:01:12
 49427
 2020 Census
 PLANH2245 2021-10-10 11:57:27
