

District Population Analysis with County Subtotals

HOUSE DISTRICTS - PLANH2281

Total State Population	29,145,505
Total Districts Required	150
Ideal District Population	194,303
Unassigned Population	28,349,801
Districts in Plan	4
Unassigned Geography	Yes
Districts Contiguous	Yes

	Population	-----Deviation-----	
		Total	Percent
Plan Overall Range		12,938	6.66%
Smallest District (16)	190,052	-4,251	-2.19%
Largest District (18)	202,990	8,687	4.47%
Average (mean)	198,926	6,749	3.48%

PLANH2281

District Population Analysis with County Subtotals

HOUSE DISTRICTS - PLANH2281

	Deviation		Total	Anglo	Non-Anglo	Asian	Black	Hispanic	B+H	%Anglo	%Non-Anglo	%Asian	%Black	%Hispanic	%B+H
DISTRICT 3	8,174	Total:	202,477	120,870	81,607	7,014	9,464	60,199	68,783	59.7	40.3	3.5	4.7	29.7	34.0
	4.21 %	VAP:	147,859	94,138	53,721	4,792	6,487	38,409	44,491	63.7	36.3	3.2	4.4	26.0	30.1
Montgomery (33%)			202,477	120,870	81,607	7,014	9,464	60,199	68,783	59.7	40.3	3.5	4.7	29.7	34.0
DISTRICT 15	5,882	Total:	200,185	121,058	79,127	16,258	18,114	40,477	57,396	60.5	39.5	8.1	9.0	20.2	28.7
	3.03 %	VAP:	147,396	93,889	53,507	11,140	11,822	27,060	38,321	63.7	36.3	7.6	8.0	18.4	26.0
Montgomery (32%)			200,185	121,058	79,127	16,258	18,114	40,477	57,396	60.5	39.5	8.1	9.0	20.2	28.7
DISTRICT 16	-4,251	Total:	190,052	113,877	76,175	4,097	14,214	53,356	66,659	59.9	40.1	2.2	7.5	28.1	35.1
	-2.19 %	VAP:	143,293	92,032	51,261	2,978	9,623	34,947	44,162	64.2	35.8	2.1	6.7	24.4	30.8
Montgomery (31%)			190,052	113,877	76,175	4,097	14,214	53,356	66,659	59.9	40.1	2.2	7.5	28.1	35.1
DISTRICT 18	8,687	Total:	202,990	131,746	71,244	1,850	15,005	49,093	63,517	64.9	35.1	0.9	7.4	24.2	31.3
	4.47 %	VAP:	151,159	103,678	47,481	1,286	11,074	30,851	41,625	68.6	31.4	0.9	7.3	20.4	27.5
Hardin (100%)			56,231	46,934	9,297	608	3,559	3,417	6,891	83.5	16.5	1.1	6.3	6.1	12.3
Liberty (100%)			91,628	50,044	41,584	734	8,052	30,797	38,563	54.6	45.4	0.8	8.8	33.6	42.1
Montgomery (4%)			27,729	15,598	12,131	332	982	10,057	10,920	56.3	43.7	1.2	3.5	36.3	39.4
San Jacinto (100%)			27,402	19,170	8,232	176	2,412	4,822	7,143	70.0	30.0	0.6	8.8	17.6	26.1

**Population and Voter Data
 with Voter Registration Comparison
 HOUSE DISTRICTS - PLANH2281**

District	Deviation		Population								Total Voter Registration			Non-Suspense Voter Registration			
			Total	%Anglo	%Non-Anglo	%Asian	%Black	%Hispanic	%B+H	General Election	Turnout	Total	SSVR	TO/VR	Total	SSVR	TO/VR
3	8,174	Total:	202,477	59.7	40.3	3.5	4.7	29.7	34.0	2020	83,910	117,388	12.1 %	71.5 %	106,554	12.2 %	78.7 %
	4.21%	VAP:	147,859	63.7	36.3	3.2	4.4	26.0	30.1	2018	58,007	105,376	11.1 %	55.0 %	93,727	11.3 %	61.9 %
15	5,882	Total:	200,185	60.5	39.5	8.1	9.0	20.2	28.7	2020	96,758	129,714	9.5 %	74.6 %	115,272	9.5 %	83.9 %
	3.03%	VAP:	147,396	63.7	36.3	7.6	8.0	18.4	26.0	2018	69,173	115,367	9.0 %	60.0 %	99,616	9.0 %	69.4 %
16	-4,251	Total:	190,052	59.9	40.1	2.2	7.5	28.1	35.1	2020	81,491	111,243	11.0 %	73.3 %	100,376	11.0 %	81.2 %
	-2.19%	VAP:	143,293	64.2	35.8	2.1	6.7	24.4	30.8	2018	57,175	99,466	10.5 %	57.5 %	87,598	10.6 %	65.3 %
18	8,687	Total:	202,990	64.9	35.1	0.9	7.4	24.2	31.3	2020	78,999	119,847	8.3 %	65.9 %	112,067	8.2 %	70.5 %
	4.47%	VAP:	151,159	68.6	31.4	0.9	7.3	20.4	27.5	2018	56,456	112,730	7.2 %	50.1 %	103,927	7.2 %	54.3 %

For technical reasons, election results in Texas Legislative Council reports may vary slightly from the official election results. Complete official results for all elections are maintained by the Office of the Texas Secretary of State.
 SSVR = Spanish surname voter registration

Plan Fit Verification
HOUSE DISTRICTS
PLANH2281 Compared with PLANH2234

The amendment fits into the base plan.

Incumbents by District

HOUSE DISTRICTS - PLANH2281

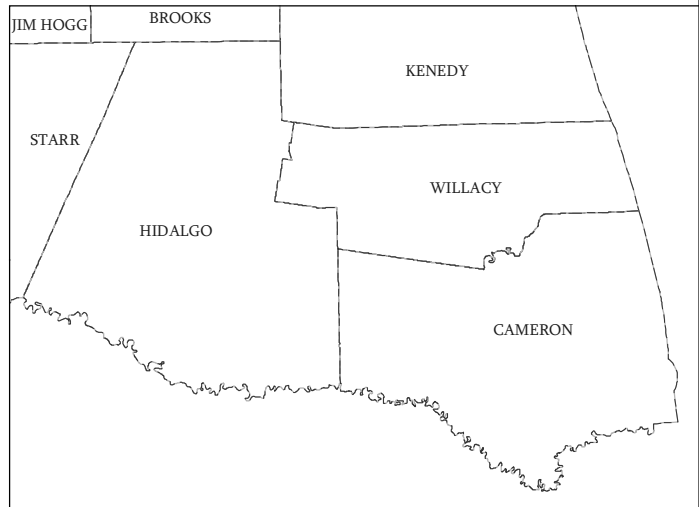
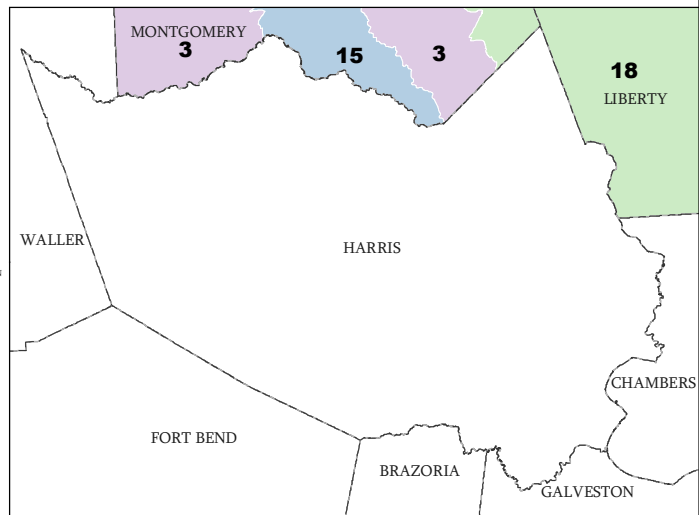
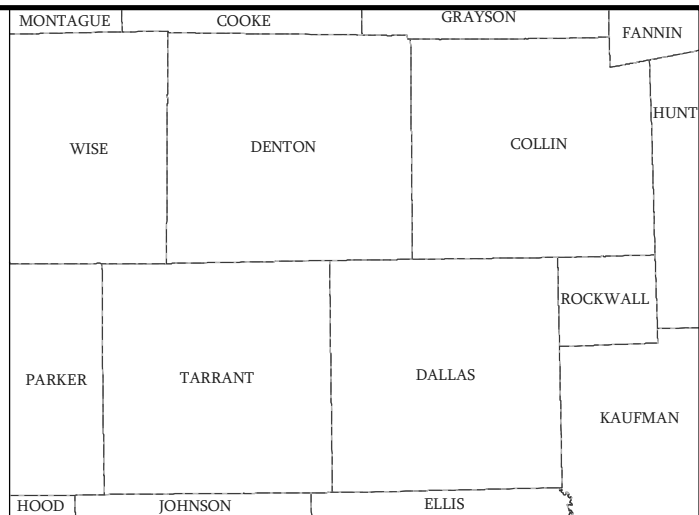
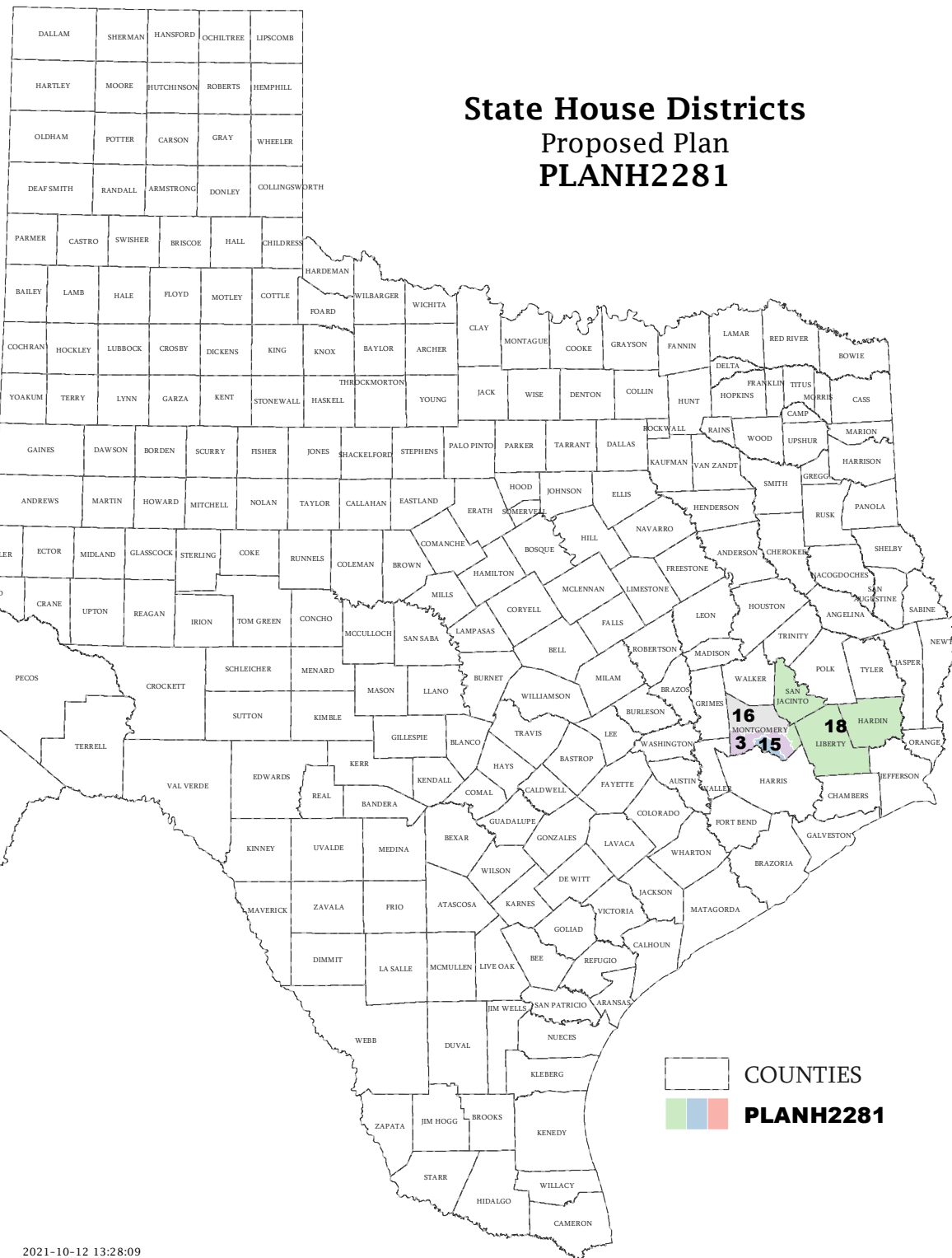
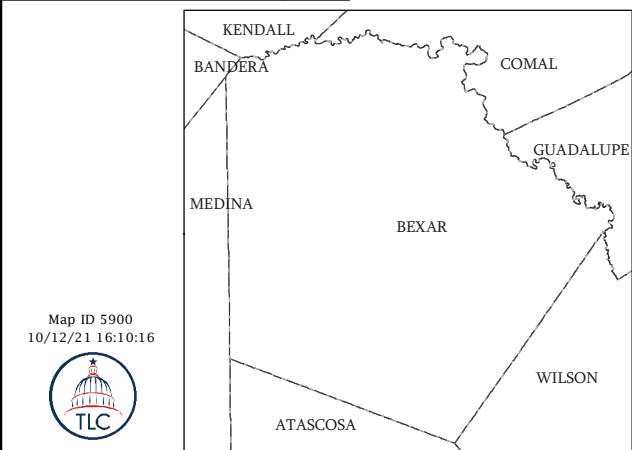
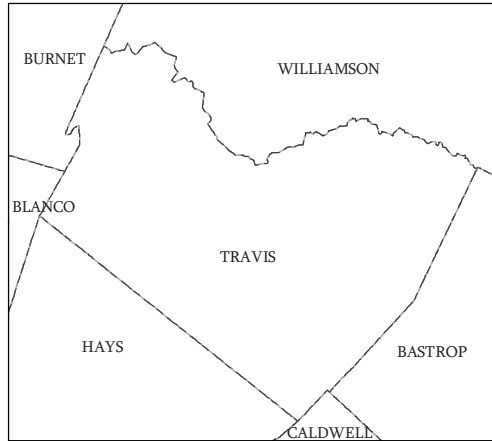
District	Incumbents
3	C. Bell, Jr. - R
15	Toth - R
16	Metcalf - R
18	Bailes - R

**American Community Survey Special Tabulation
 Using Census and American Community Survey Data
 HOUSE DISTRICTS - PLANH2281**

2020 Census			Special Tabulation of Citizen Voting Age Population (CVAP) from the 2015-2019 American Community Survey with Margins of Error												
			CVAP	Hispanic CVAP % Hispanic	Not Hispanic or Latino Citizen Voting Age Population (CVAP)										
District	Total	VAP			% Black Alone	% Black + White	% Black + American Indian	% White Alone	% American Indian Alone	% Asian Alone	% Native Hawaiian Alone	% American Indian + White	% Asian + White	% Remainder 2 or More Other	
3	202,477	147,859	120,760 (±4,183)	15.3 (±1.6)	3.5 (±0.9)	0.4 (±0.3)	0.2(±0.2)	77.1 (±1.4)	0.3 (±0.2)	1.6 (±0.5)	0.1 (±0.2)	0.9 (±0.3)	0.2 (±0.2)	0.3 (±0.2)	
15	200,185	147,396	126,815 (±3,934)	13.0 (±1.3)	6.8 (±0.9)	0.1 (±0.1)	0.0(±0.1)	75.2 (±1.4)	0.1 (±0.1)	3.7 (±0.6)	0.0 (±0.1)	0.5 (±0.2)	0.4 (±0.2)	0.2 (±0.1)	
16	190,052	143,293	112,295 (±3,420)	15.3 (±1.4)	5.4 (±0.8)	0.3 (±0.2)	0.0(±0.1)	77.0 (±1.2)	0.3 (±0.2)	1.2 (±0.4)	0.0 (±0.1)	0.4 (±0.2)	0.1 (±0.1)	0.0 (±0.1)	
18	202,990	151,159	136,745 (±3,656)	10.7 (±0.9)	8.2 (±0.9)	0.2 (±0.2)	0.0(±0.1)	79.2 (±1.0)	0.5 (±0.2)	0.4 (±0.2)	0.0 (±0.1)	0.5 (±0.2)	0.1 (±0.1)	0.0 (±0.1)	

The American Community Survey provided estimated citizen voting age population (CVAP) data at the block group level in a Special Tabulation. Because the MOE can only be calculated using whole block groups, all block groups with more than 50% of the population in a district are included in the analysis. The Red-118 report provides a summary of the block groups used in the analysis.
 The percent for each CVAP population category is that group's CVAP divided by the CVAP total.
 Numbers in parentheses are margins of error at 90% confidence level.

State House Districts Proposed Plan PLANH2281



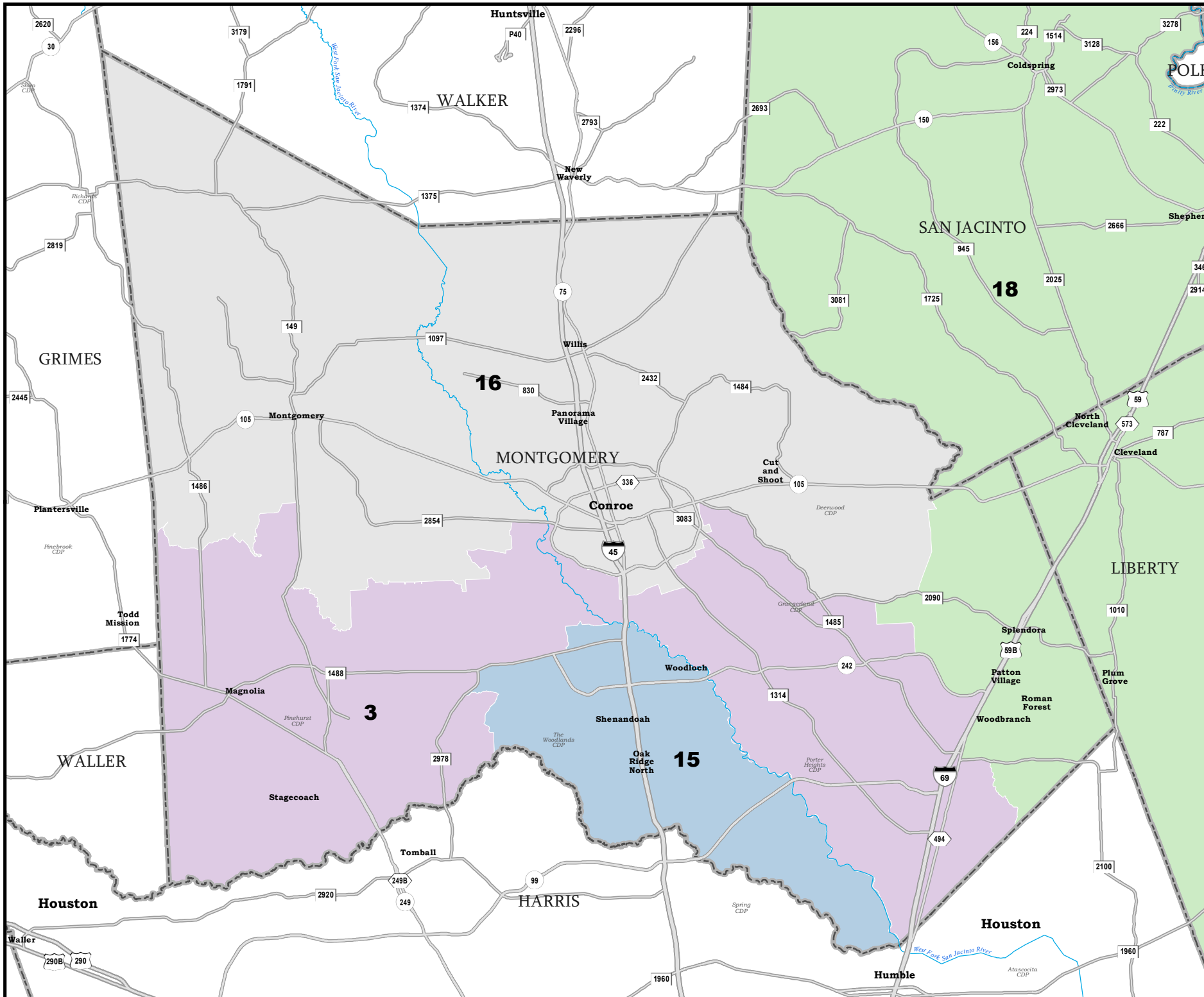
COUNTIES

 PLANH2281

Map ID 5900
10/12/21 16:10:16



49772
2020 Census
PLANH2281 2021-10-12 13:28:09

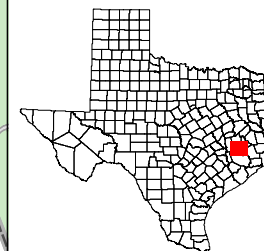


MONTGOMERY COUNTY

State House Districts Proposed Plan PLANH2281

COUNTIES

PLANH2281



Map ID 5900
10/12/21 16:10:16



49772
2020 Census
PLANH2281 2021-10-12 13:28:09