

District Population Analysis with County Subtotals

HOUSE DISTRICTS - PLANH2283

Total State Population	29,145,505
Total Districts Required	150
Ideal District Population	194,303
Unassigned Population	28,548,094
Districts in Plan	3
Unassigned Geography	Yes
Districts Contiguous	Yes

	Population	-----Deviation-----	
		Total	Percent
Plan Overall Range		10,984	5.66%
Smallest District (128)	192,949	-1,354	-0.70%
Largest District (144)	203,933	9,630	4.96%
Average (mean)	199,137	5,737	2.95%

PLANH2283

District Population Analysis with County Subtotals

HOUSE DISTRICTS - PLANH2283

	Deviation		Total	Anglo	Non-Anglo	Asian	Black	Hispanic	B+H	%Anglo	%Non-Anglo	%Asian	%Black	%Hispanic	%B+H
DISTRICT 128	-1,354	Total:	192,949	86,212	106,737	4,832	23,251	76,158	97,724	44.7	55.3	2.5	12.1	39.5	50.6
	-0.70 %	VAP:	142,045	69,774	72,271	3,583	15,883	50,065	65,196	49.1	50.9	2.5	11.2	35.2	45.9
Harris (4%)			192,949	86,212	106,737	4,832	23,251	76,158	97,724	44.7	55.3	2.5	12.1	39.5	50.6
DISTRICT 143	6,226	Total:	200,529	20,298	180,231	2,524	26,373	152,081	176,430	10.1	89.9	1.3	13.2	75.8	88.0
	3.20 %	VAP:	143,834	17,239	126,595	1,937	19,229	105,353	123,539	12.0	88.0	1.3	13.4	73.2	85.9
Harris (4%)			200,529	20,298	180,231	2,524	26,373	152,081	176,430	10.1	89.9	1.3	13.2	75.8	88.0
DISTRICT 144	9,630	Total:	203,933	27,735	176,198	6,820	15,570	154,134	167,908	13.6	86.4	3.3	7.6	75.6	82.3
	4.96 %	VAP:	146,199	23,871	122,328	5,195	10,525	106,239	115,885	16.3	83.7	3.6	7.2	72.7	79.3
Harris (4%)			203,933	27,735	176,198	6,820	15,570	154,134	167,908	13.6	86.4	3.3	7.6	75.6	82.3

**Population and Voter Data
 with Voter Registration Comparison
 HOUSE DISTRICTS - PLANH2283**

District	Deviation		Population							Total Voter Registration			Non-Suspense Voter Registration				
			Total	%Anglo	%Non-Anglo	%Asian	%Black	%Hispanic	%B+H	General Election	Turnout	Total	SSVR	TO/VR	Total	SSVR	TO/VR
128	-1,354 -0.70%	Total:	192,949	44.7	55.3	2.5	12.1	39.5	50.6	2020	68,867	103,757	22.9 %	66.4 %	95,827	23.2 %	71.9 %
		VAP:	142,045	49.1	50.9	2.5	11.2	35.2	45.9	2018	48,908	97,586	21.1 %	50.1 %	88,807	21.5 %	55.1 %
143	6,226 3.20%	Total:	200,529	10.1	89.9	1.3	13.2	75.8	88.0	2020	44,344	83,255	57.3 %	53.3 %	77,393	58.6 %	57.3 %
		VAP:	143,834	12.0	88.0	1.3	13.4	73.2	85.9	2018	32,635	80,009	56.3 %	40.8 %	73,810	57.8 %	44.2 %
144	9,630 4.96%	Total:	203,933	13.6	86.4	3.3	7.6	75.6	82.3	2020	46,654	85,056	57.6 %	54.9 %	78,286	58.8 %	59.6 %
		VAP:	146,199	16.3	83.7	3.6	7.2	72.7	79.3	2018	34,150	81,521	56.0 %	41.9 %	73,807	57.4 %	46.3 %

For technical reasons, election results in Texas Legislative Council reports may vary slightly from the official election results. Complete official results for all elections are maintained by the Office of the Texas Secretary of State.
 SSVR = Spanish surname voter registration

Plan Fit Verification
HOUSE DISTRICTS
PLANH2283 Compared with PLANH2187

The amendment fits into the base plan.

Incumbents by District

HOUSE DISTRICTS - PLANH2283

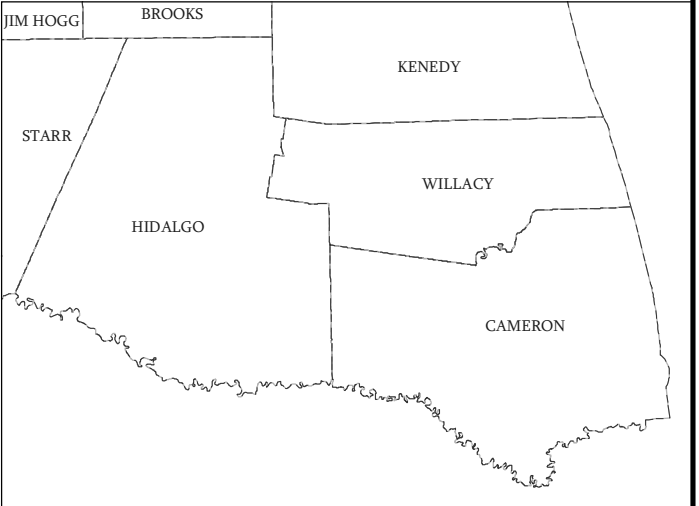
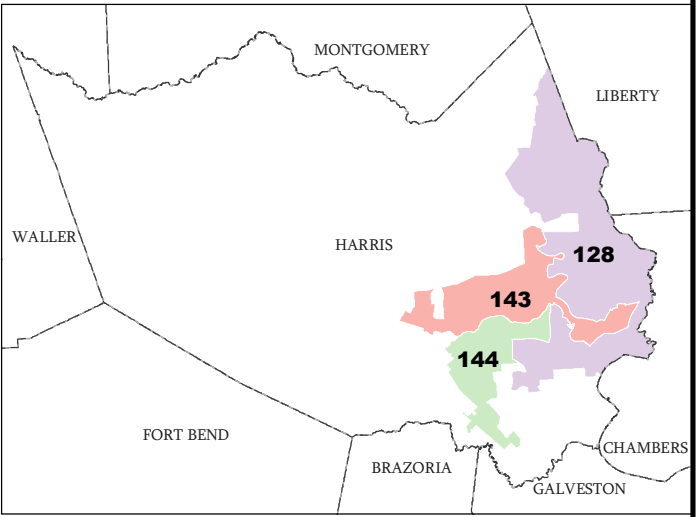
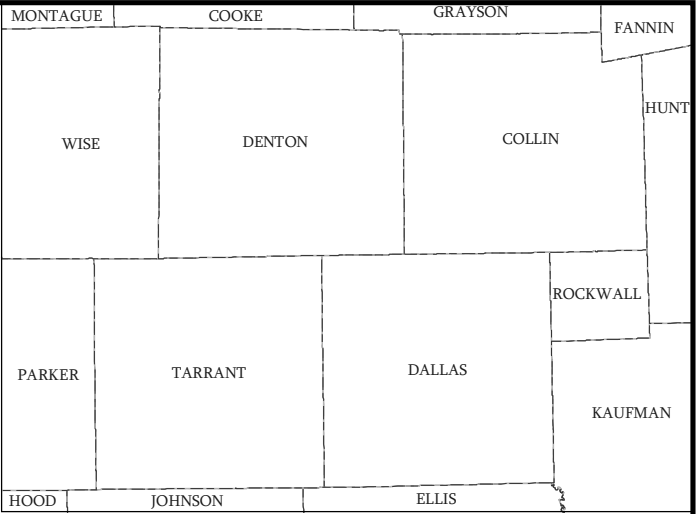
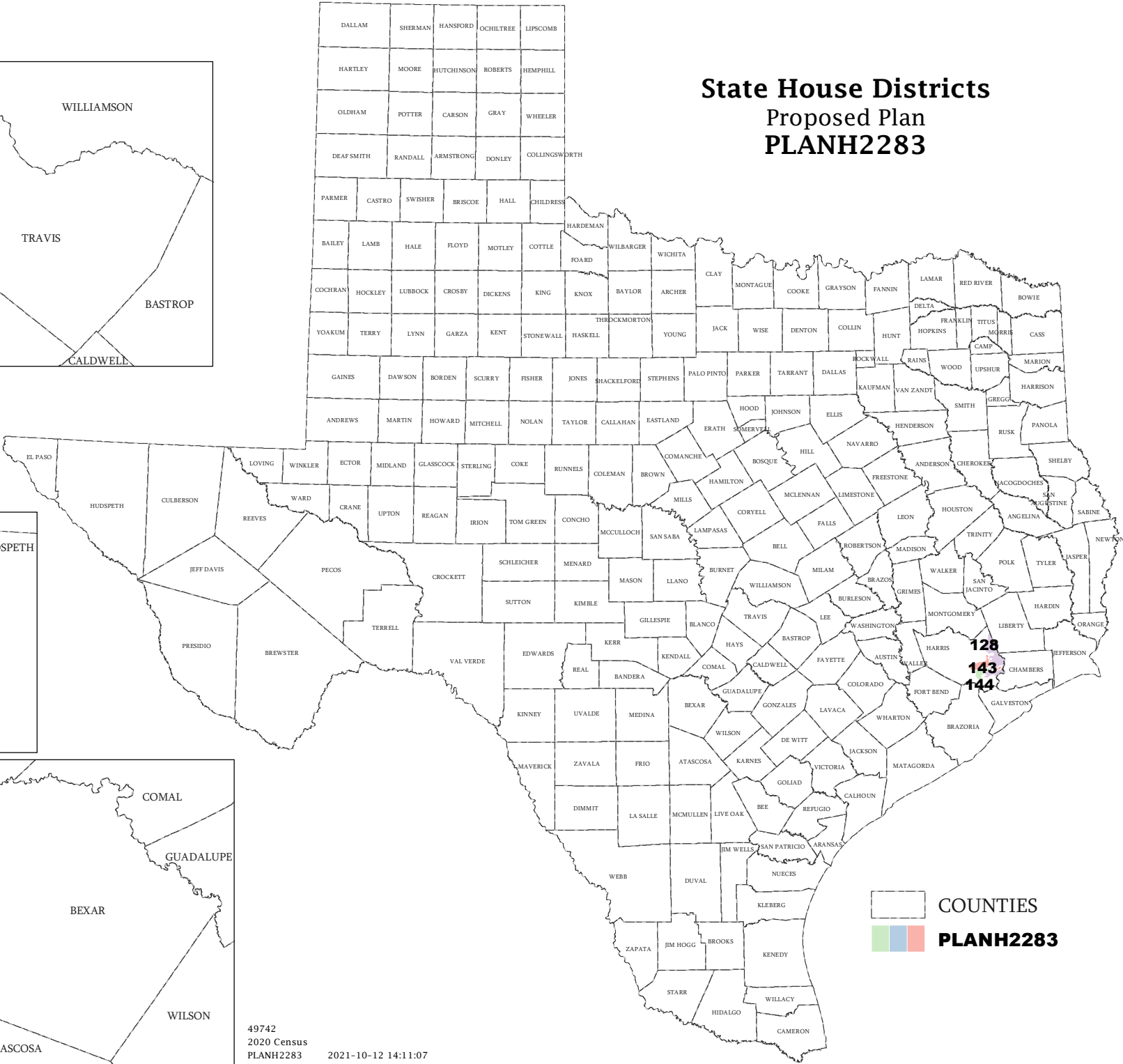
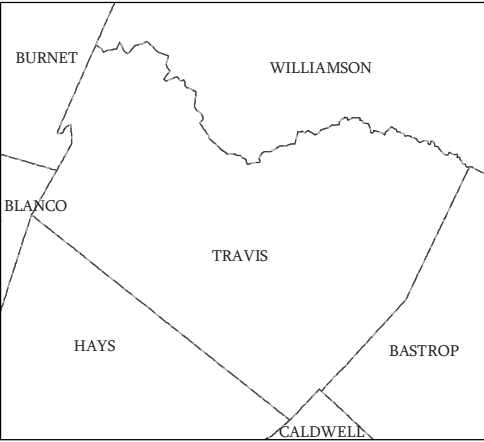
District	Incumbents
128	Cain - R
143	Hernandez - D
144	Perez - D

**American Community Survey Special Tabulation
 Using Census and American Community Survey Data
 HOUSE DISTRICTS - PLANH2283**

2020 Census			Special Tabulation of Citizen Voting Age Population (CVAP) from the 2015-2019 American Community Survey with Margins of Error												
			CVAP	Hispanic CVAP % Hispanic	Not Hispanic or Latino Citizen Voting Age Population (CVAP)										
District	Total	VAP			% Black Alone	% Black + White	% Black + American Indian	% White Alone	% American Indian Alone	% Asian Alone	% Native Hawaiian Alone	% American Indian + White	% Asian + White	% Remainder 2 or More Other	
128	192,949	142,045	118,840 (±3,233)	28.9 (±1.7)	10.2 (±1.1)	0.3 (±0.2)	0.0(±0.1)	58.0 (±1.2)	0.3 (±0.2)	1.5 (±0.4)	0.0 (±0.1)	0.4 (±0.2)	0.1 (±0.1)	0.2 (±0.1)	
143	200,529	143,834	100,165 (±2,971)	60.0 (±1.6)	19.5 (±1.5)	0.3 (±0.2)	0.1(±0.2)	18.5 (±1.0)	0.1 (±0.2)	1.0 (±0.4)	0.0 (±0.2)	0.3 (±0.2)	0.0 (±0.2)	0.1 (±0.2)	
144	203,933	146,199	107,960 (±3,248)	64.8 (±1.8)	8.6 (±1.1)	0.2 (±0.2)	0.2(±0.3)	22.8 (±1.1)	0.1 (±0.2)	2.8 (±0.5)	0.0 (±0.1)	0.3 (±0.2)	0.1 (±0.2)	0.0 (±0.1)	

The American Community Survey provided estimated citizen voting age population (CVAP) data at the block group level in a Special Tabulation. Because the MOE can only be calculated using whole block groups, all block groups with more than 50% of the population in a district are included in the analysis. The Red-118 report provides a summary of the block groups used in the analysis.
 The percent for each CVAP population category is that group's CVAP divided by the CVAP total.
 Numbers in parentheses are margins of error at 90% confidence level.

State House Districts Proposed Plan PLANH2283

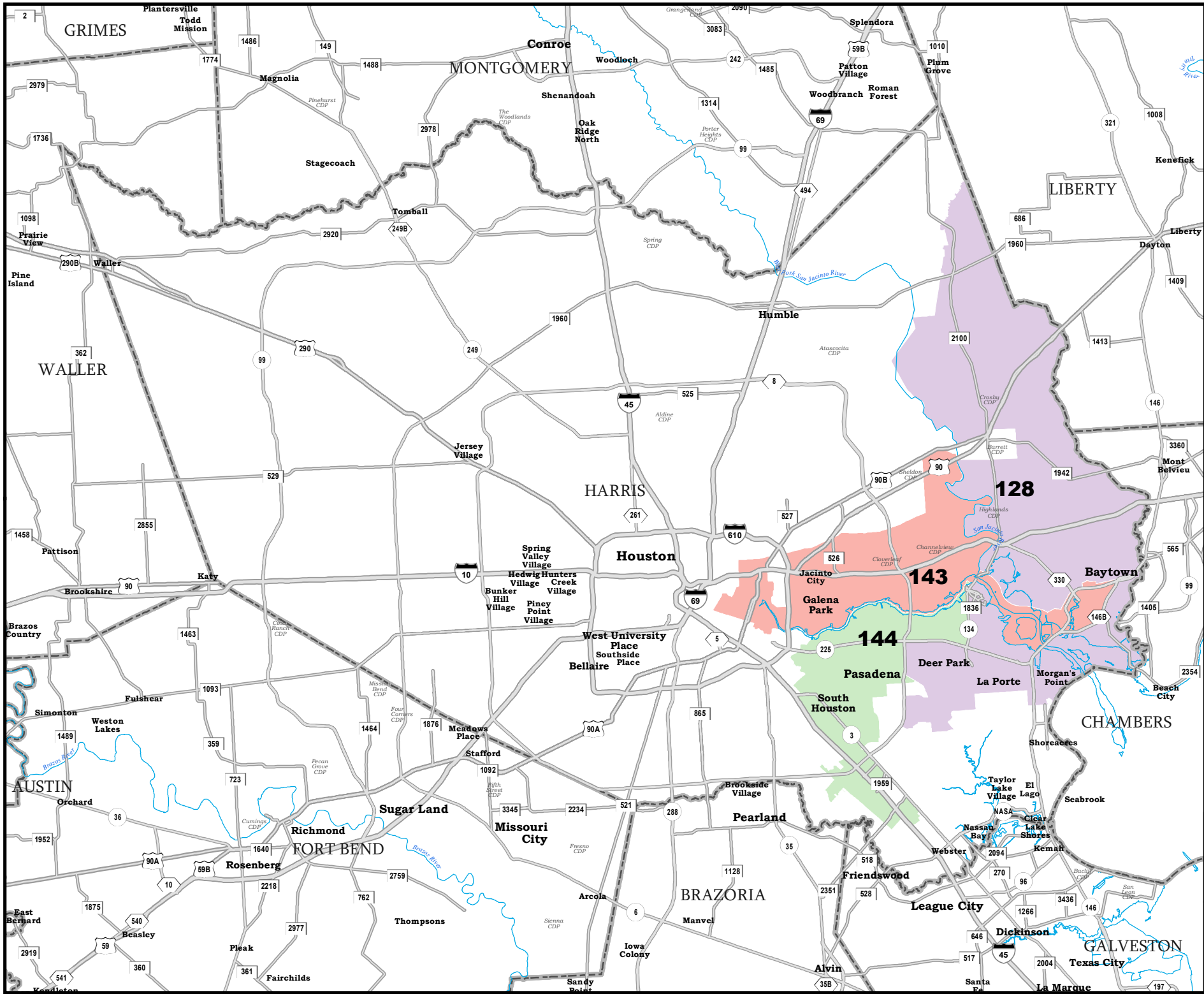


COUNTIES
PLANH2283

Map ID 5900
10/12/21 14:20:27



49742
2020 Census
PLANH2283 2021-10-12 14:11:07



HARRIS COUNTY

State House Districts Proposed Plan PLANH2283

A legend showing a dashed line for 'COUNTIES' and a colored square (purple, red, green) for 'PLANH2283'.

