

District Population Analysis with County Subtotals

HOUSE DISTRICTS - PLANH2284

Total State Population	29,145,505
Total Districts Required	150
Ideal District Population	194,303
Unassigned Population	28,762,960
Districts in Plan	2
Unassigned Geography	Yes
Districts Contiguous	Yes

	Population	-----Deviation-----	
		Total	Percent
Plan Overall Range		9,025	4.64%
Smallest District (91)	186,760	-7,543	-3.88%
Largest District (93)	195,785	1,482	0.76%
Average (mean)	191,273	4,513	2.32%

PLANH2284

District Population Analysis with County Subtotals

HOUSE DISTRICTS - PLANH2284

	Deviation		Total	Anglo	Non-Anglo	Asian	Black	Hispanic	B+H	%Anglo	%Non-Anglo	%Asian	%Black	%Hispanic	%B+H
DISTRICT 91	-7,543	Total:	186,760	99,881	86,879	14,345	17,104	51,223	67,063	53.5	46.5	7.7	9.2	27.4	35.9
	-3.88 %	VAP:	141,029	81,308	59,721	10,751	11,229	33,961	44,585	57.7	42.3	7.6	8.0	24.1	31.6
Tarrant (9%)			186,760	99,881	86,879	14,345	17,104	51,223	67,063	53.5	46.5	7.7	9.2	27.4	35.9
DISTRICT 93	1,482	Total:	195,785	100,779	95,006	20,292	25,558	45,965	69,675	51.5	48.5	10.4	13.1	23.5	35.6
	0.76 %	VAP:	137,347	74,628	62,719	13,984	16,086	29,663	44,976	54.3	45.7	10.2	11.7	21.6	32.7
Tarrant (9%)			195,785	100,779	95,006	20,292	25,558	45,965	69,675	51.5	48.5	10.4	13.1	23.5	35.6

**Population and Voter Data
 with Voter Registration Comparison
 HOUSE DISTRICTS - PLANH2284**

District	Deviation		Population								Total Voter Registration			Non-Suspense Voter Registration			
			Total	%Anglo	%Non-Anglo	%Asian	%Black	%Hispanic	%B+H	General Election	Turnout	Total	SSVR	TO/VR	Total	SSVR	TO/VR
91	-7,543	Total:	186,760	53.5	46.5	7.7	9.2	27.4	35.9	2020	76,281	110,717	14.0 %	68.9 %	98,550	14.1 %	77.4 %
	-3.88%	VAP:	141,029	57.7	42.3	7.6	8.0	24.1	31.6	2018	57,950	104,554	13.3 %	55.4 %	91,200	13.5 %	63.5 %
93	1,482	Total:	195,785	51.5	48.5	10.4	13.1	23.5	35.6	2020	81,436	114,497	14.0 %	71.1 %	101,109	14.2 %	80.5 %
	0.76%	VAP:	137,347	54.3	45.7	10.2	11.7	21.6	32.7	2018	53,412	99,033	13.7 %	53.9 %	84,645	14.0 %	63.1 %

Plan Fit Verification
HOUSE DISTRICTS
PLANH2284 Compared with PLANH2179

The amendment fits into the base plan.

Incumbents by District

HOUSE DISTRICTS - PLANH2284

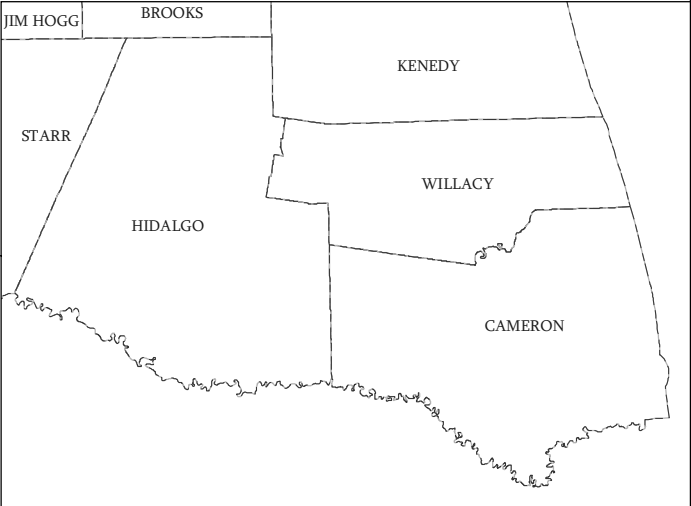
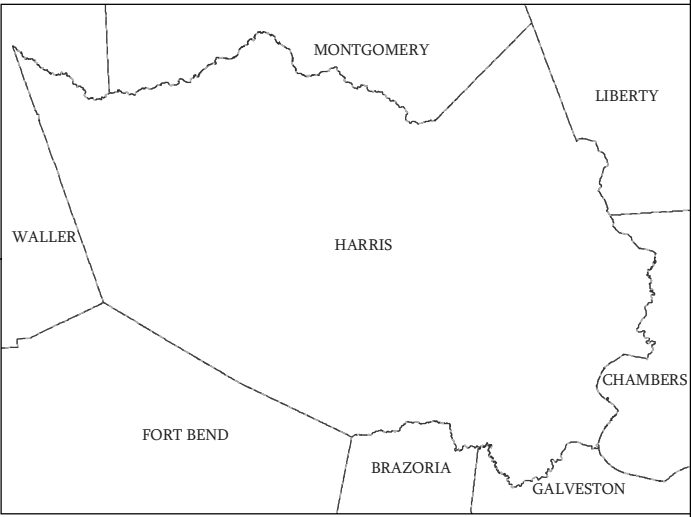
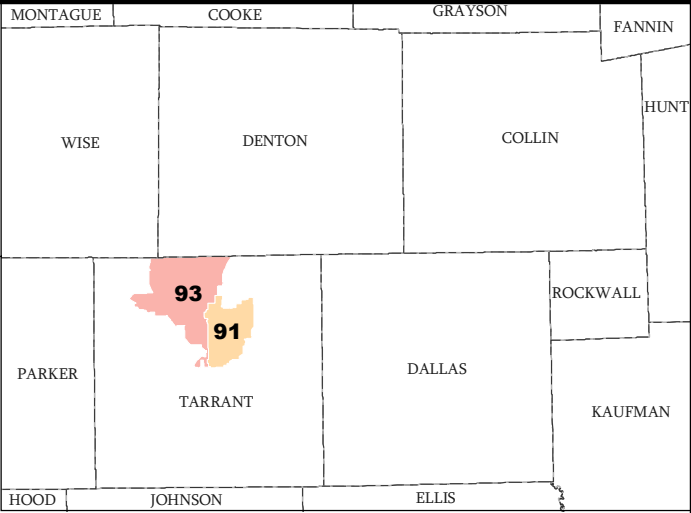
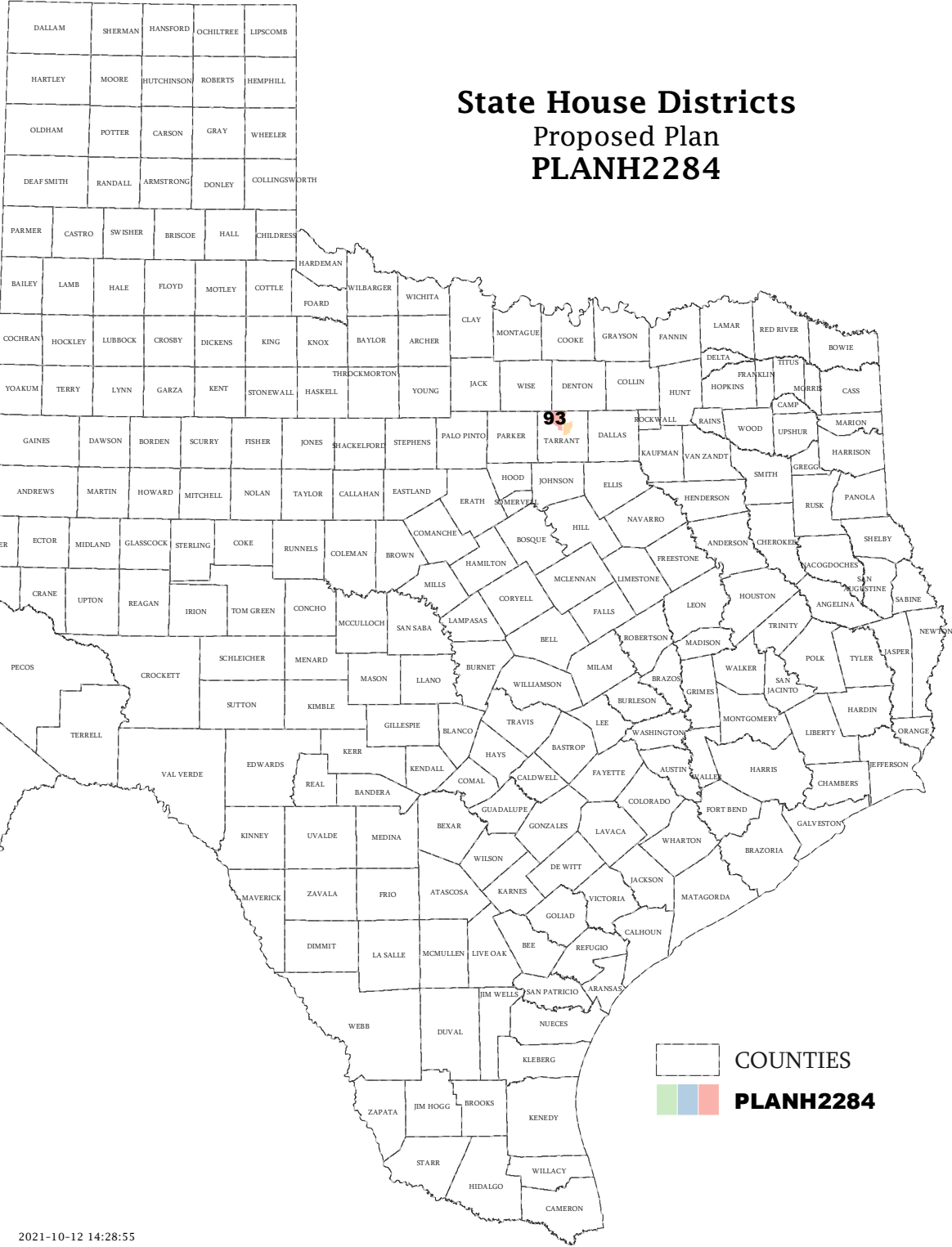
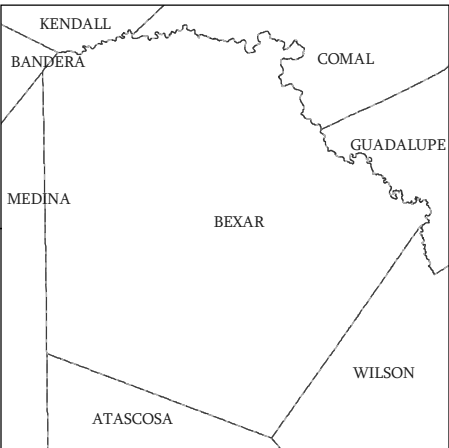
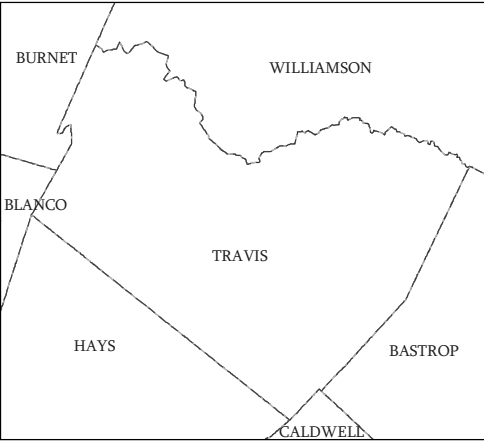
District	Incumbents
91	Klick - R
93	Krause - R

American Community Survey Special Tabulation
 Using Census and American Community Survey Data
HOUSE DISTRICTS - PLANH2284

2020 Census			Special Tabulation of Citizen Voting Age Population (CVAP) from the 2015-2019 American Community Survey with Margins of Error												
			CVAP	Hispanic CVAP % Hispanic	Not Hispanic or Latino Citizen Voting Age Population (CVAP)										
District	Total	VAP			% Black Alone	% Black + White	% Black + American Indian	% White Alone	% American Indian Alone	% Asian Alone	% Native Hawaiian Alone	% American Indian + White	% Asian + White	% Remainder 2 or More Other	
91	186,760	141,029	122,890 (±3,245)	18.2 (±1.4)	6.1 (±0.9)	0.3 (±0.2)	0.1(±0.1)	68.2 (±1.1)	0.5 (±0.2)	5.3 (±0.8)	0.1 (±0.1)	0.6 (±0.2)	0.5 (±0.2)	0.2 (±0.2)	
93	195,785	137,347	117,195 (±3,939)	16.2 (±1.4)	11.1 (±1.5)	0.4 (±0.2)	0.1(±0.1)	63.7 (±1.5)	0.7 (±0.3)	6.1 (±1.0)	0.0 (±0.1)	0.8 (±0.3)	0.4 (±0.2)	0.5 (±0.3)	

The American Community Survey provided estimated citizen voting age population (CVAP) data at the block group level in a Special Tabulation. Because the MOE can only be calculated using whole block groups, all block groups with more than 50% of the population in a district are included in the analysis. The Red-118 report provides a summary of the block groups used in the analysis.
 The percent for each CVAP population category is that group's CVAP divided by the CVAP total.
 Numbers in parentheses are margins of error at 90% confidence level.

State House Districts Proposed Plan PLANH2284

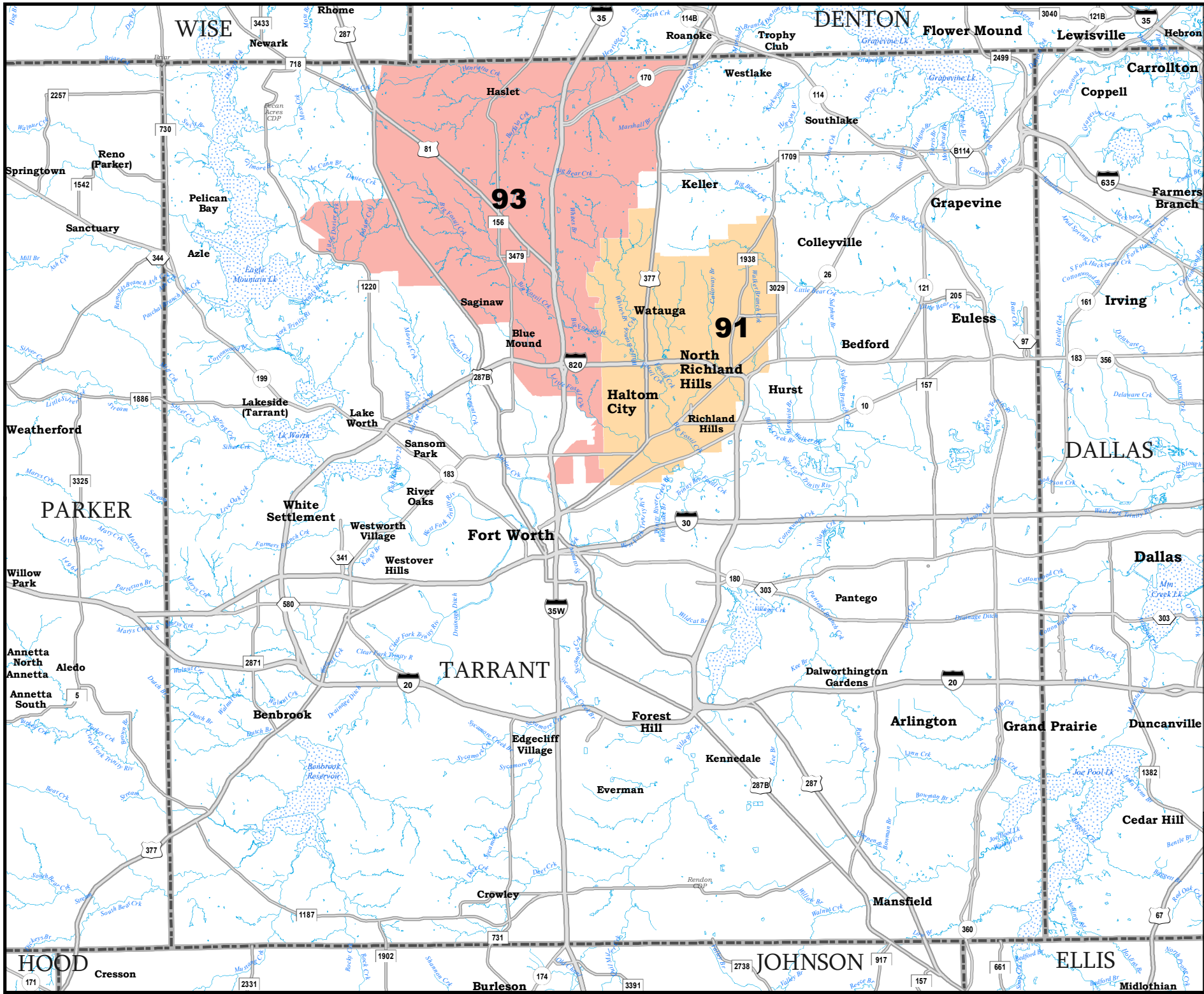


COUNTIES
PLANH2284

Map ID 5901
10/12/21 15:31:03



49760
2020 Census
PLANH2284 2021-10-12 14:28:55



TARRANT COUNTY

State House Districts
Proposed Plan
PLANH2284

 COUNTIES
 **PLANH2284**

