

District Population Analysis with County Subtotals  
**HOUSE DISTRICTS - PLANH2296**

Total State Population	29,145,505
Total Districts Required	150
Ideal District Population	194,303
Unassigned Population	28,740,053
Districts in Plan	2
Unassigned Geography	Yes
Districts Contiguous	Yes

	<b>Population</b>	<b>-----Deviation-----</b>	
		<b>Total</b>	<b>Percent</b>
Plan Overall Range		1,826	0.93%
Smallest District (138)	201,813	7,510	3.87%
Largest District (148)	203,639	9,336	4.80%
Average (mean)	202,726	8,423	4.34%

**PLANH2296**

## District Population Analysis with County Subtotals

### HOUSE DISTRICTS - PLANH2296

	Deviation		Total	Anglo	Non-Anglo	Asian	Black	Hispanic	B+H	%Anglo	%Non-Anglo	%Asian	%Black	%Hispanic	%B+H
<b>DISTRICT 138</b>	7,510	Total:	201,813	73,352	128,461	23,200	20,604	83,817	102,608	36.3	63.7	11.5	10.2	41.5	50.8
	3.87 %	VAP:	154,895	62,040	92,855	18,361	14,796	58,480	72,213	40.1	59.9	11.9	9.6	37.8	46.6
Harris (4%)			201,813	73,352	128,461	23,200	20,604	83,817	102,608	36.3	63.7	11.5	10.2	41.5	50.8
<b>DISTRICT 148</b>	9,336	Total:	203,639	38,683	164,956	17,747	32,124	114,852	145,005	19.0	81.0	8.7	15.8	56.4	71.2
	4.80 %	VAP:	151,087	33,459	117,628	14,117	23,049	79,668	101,673	22.1	77.9	9.3	15.3	52.7	67.3
Harris (4%)			203,639	38,683	164,956	17,747	32,124	114,852	145,005	19.0	81.0	8.7	15.8	56.4	71.2

**Population and Voter Data  
 with Voter Registration Comparison  
 HOUSE DISTRICTS - PLANH2296**

District	Deviation		Population							Total Voter Registration			Non-Suspense Voter Registration				
			Total	%Anglo	%Non-Anglo	%Asian	%Black	%Hispanic	%B+H	General Election	Turnout	Total	SSVR	TO/VR	Total	SSVR	TO/VR
138	7,510	Total:	201,813	36.3	63.7	11.5	10.2	41.5	50.8	2020	81,663	113,762	20.0 %	71.8 %	105,801	20.1 %	77.2 %
	3.87%	VAP:	154,895	40.1	59.9	11.9	9.6	37.8	46.6	2018	62,786	107,426	19.2 %	58.4 %	98,018	19.5 %	64.1 %
148	9,336	Total:	203,639	19.0	81.0	8.7	15.8	56.4	71.2	2020	59,529	93,893	32.4 %	63.4 %	86,542	32.9 %	68.8 %
	4.80%	VAP:	151,087	22.1	77.9	9.3	15.3	52.7	67.3	2018	43,535	88,845	31.6 %	49.0 %	80,449	32.3 %	54.1 %

For technical reasons, election results in Texas Legislative Council reports may vary slightly from the official election results. Complete official results for all elections are maintained by the Office of the Texas Secretary of State.  
 SSVR = Spanish surname voter registration

**Plan Fit Verification**  
**HOUSE DISTRICTS**  
**PLANH2296 Compared with PLANH2187**

**The amendment fits into the base plan.**

# Incumbents by District

## HOUSE DISTRICTS - PLANH2296

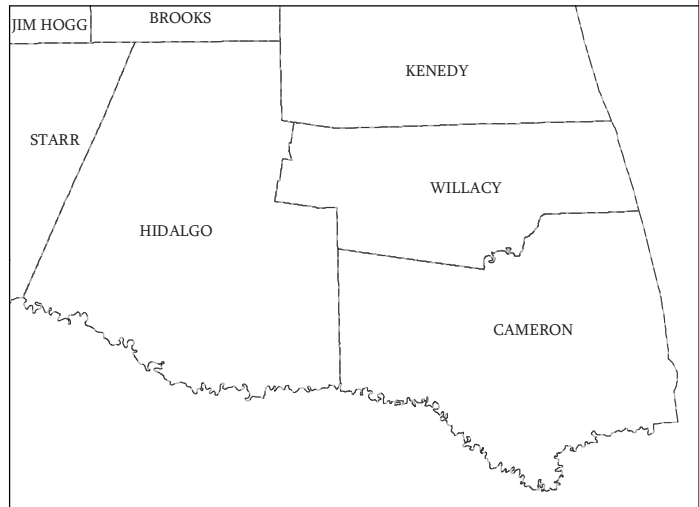
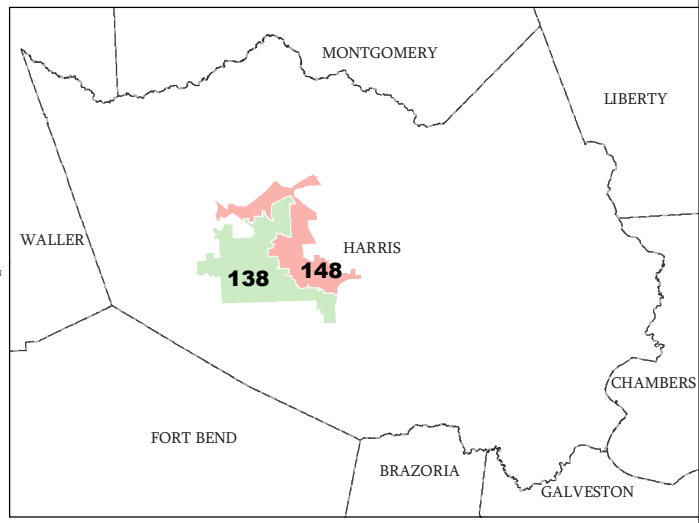
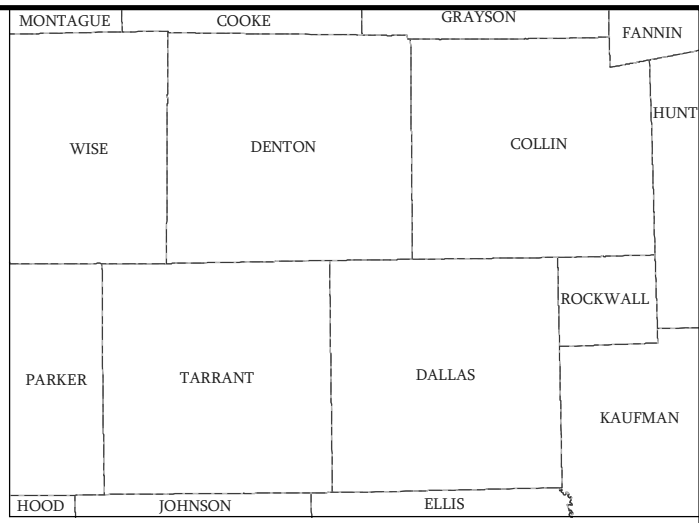
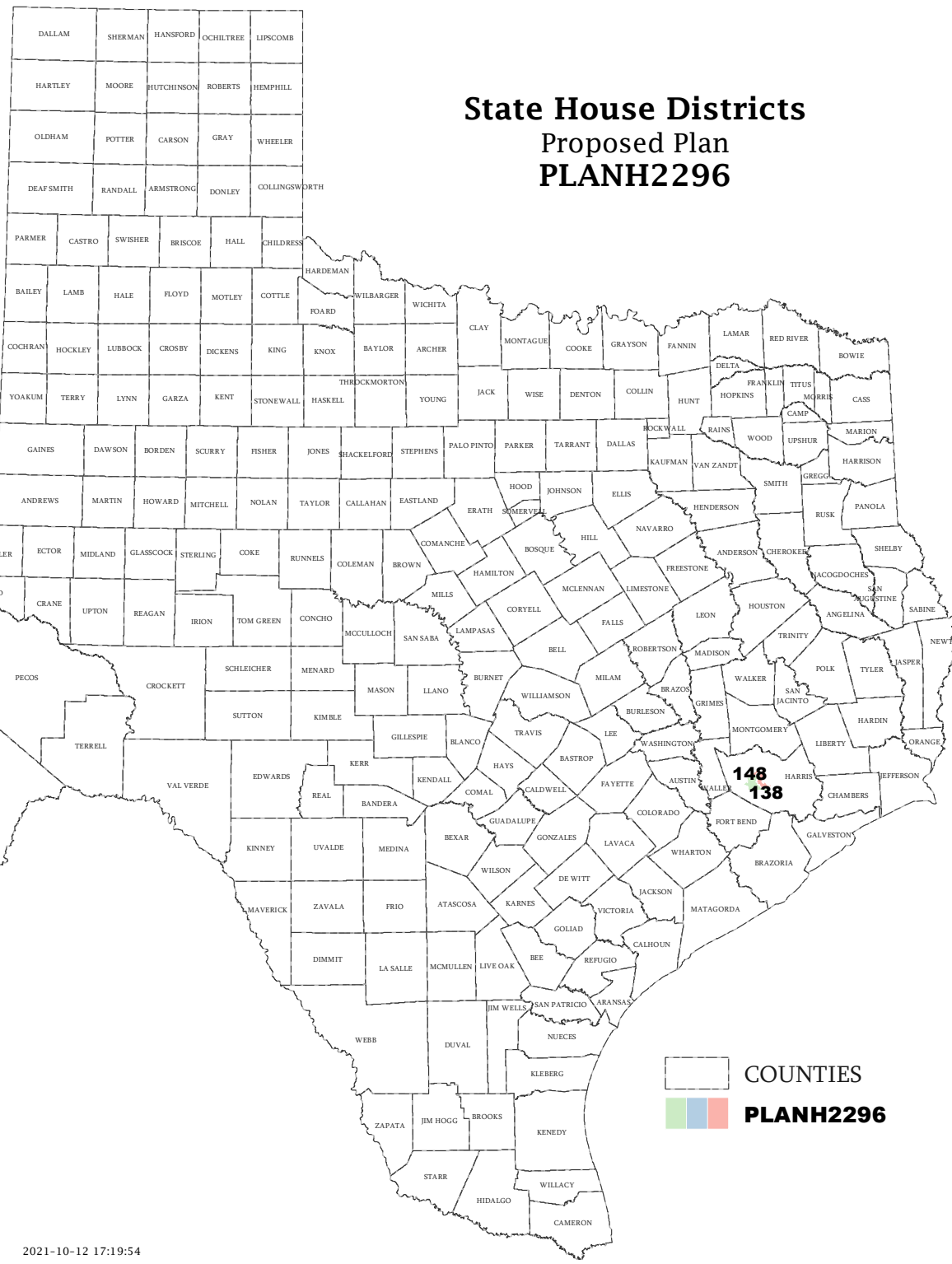
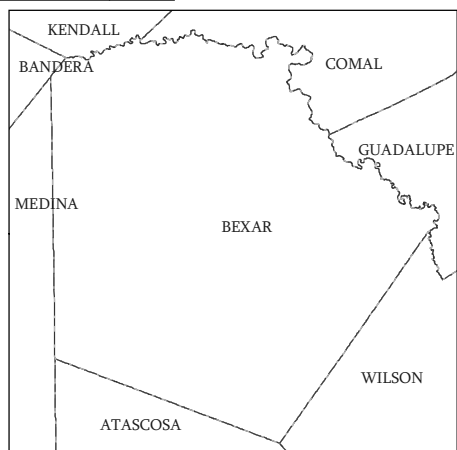
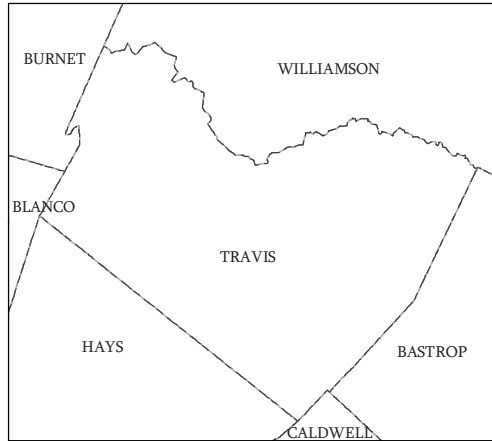
District	Incumbents
138	Hull - R
148	Morales Shaw - D

American Community Survey Special Tabulation  
 Using Census and American Community Survey Data  
**HOUSE DISTRICTS - PLANH2296**

2020 Census			Special Tabulation of Citizen Voting Age Population (CVAP) from the 2015-2019 American Community Survey with Margins of Error												
			CVAP	Hispanic CVAP % Hispanic	Not Hispanic or Latino Citizen Voting Age Population (CVAP)										
District	Total	VAP			% Black Alone	% Black + White	% Black + American Indian	% White Alone	% American Indian Alone	% Asian Alone	% Native Hawaiian Alone	% American Indian + White	% Asian + White	% Remainder 2 or More Other	
138	201,813	154,895	113,835 (±2,793)	26.1 (±1.5)	9.7 (±1.2)	0.3 (±0.2)	0.0(±0.1)	53.7 (±0.9)	0.2 (±0.2)	9.2 (±0.9)	0.0 (±0.1)	0.3 (±0.2)	0.3 (±0.1)	0.3 (±0.2)	
148	203,639	151,087	114,430 (±3,323)	37.7 (±1.8)	18.7 (±1.6)	0.3 (±0.2)	0.0(±0.1)	32.7 (±1.2)	0.2 (±0.2)	9.5 (±1.0)	0.1 (±0.2)	0.4 (±0.2)	0.2 (±0.1)	0.2 (±0.2)	

The American Community Survey provided estimated citizen voting age population (CVAP) data at the block group level in a Special Tabulation. Because the MOE can only be calculated using whole block groups, all block groups with more than 50% of the population in a district are included in the analysis. The Red-118 report provides a summary of the block groups used in the analysis.  
 The percent for each CVAP population category is that group's CVAP divided by the CVAP total.  
 Numbers in parentheses are margins of error at 90% confidence level.

# State House Districts Proposed Plan PLANH2296

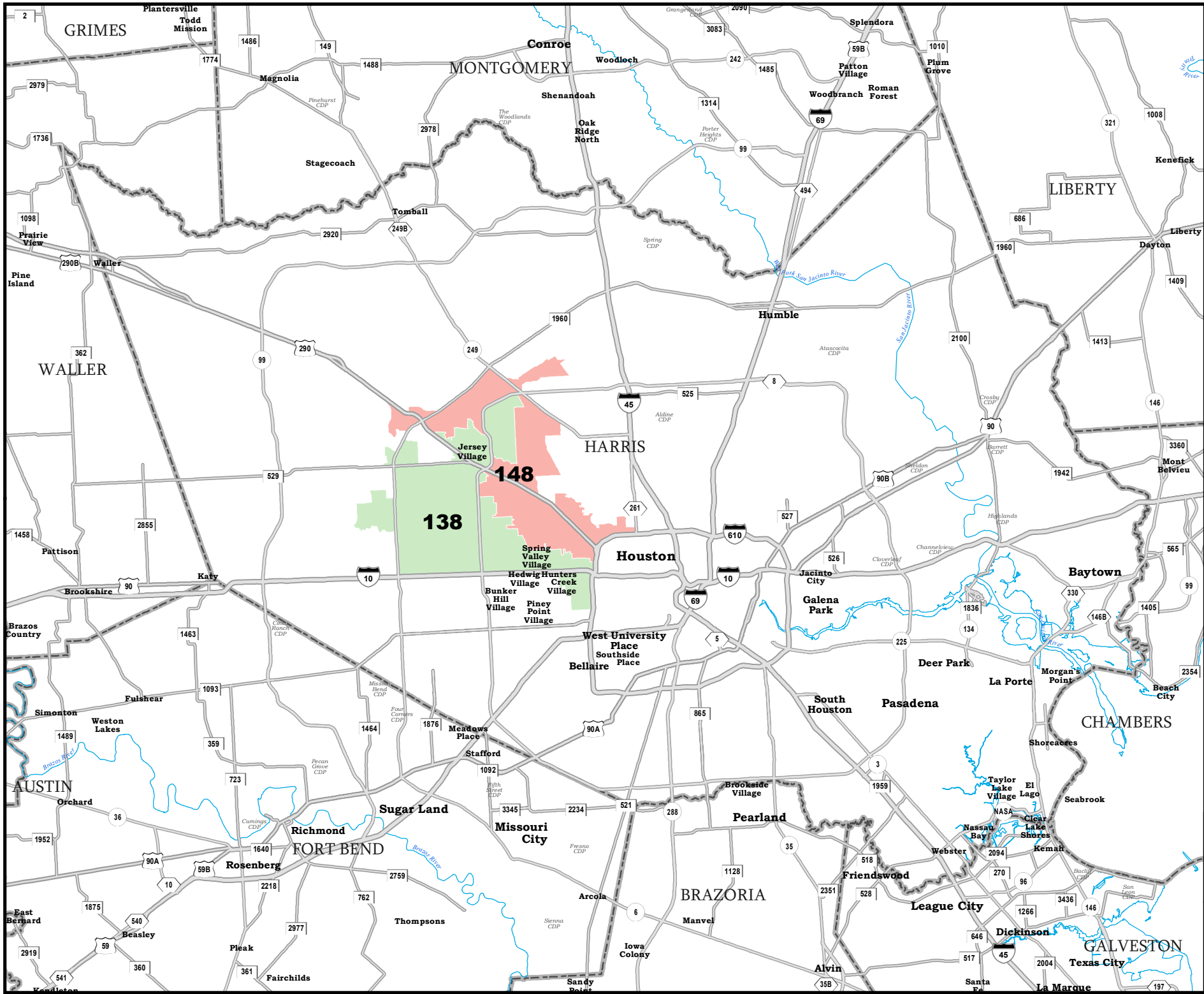


**COUNTIES**  
**PLANH2296**

Map ID 5900  
10/12/21 17:24:48



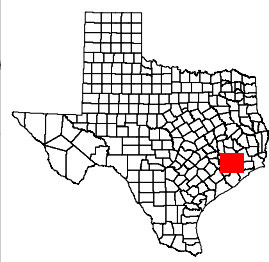
49784  
2020 Census  
PLANH2296 2021-10-12 17:19:54



# HARRIS COUNTY

## State House Districts Proposed Plan PLANH2296

 COUNTIES  
 PLANH2296



Map ID 5900  
10/12/21 17:24:48



49784  
2020 Census  
PLANH2296 2021-10-12 17:19:54