

District Population Analysis with County Subtotals

HOUSE DISTRICTS - PLANH2310

Total State Population	29,145,505
Total Districts Required	150
Ideal District Population	194,303
Unassigned Population	27,742,730
Districts in Plan	7
Unassigned Geography	Yes
Districts Contiguous	Yes

	Population	-----Deviation-----	
		Total	Percent
Plan Overall Range		11,011	5.67%
Smallest District (128)	192,949	-1,354	-0.70%
Largest District (144)	203,960	9,657	4.97%
Average (mean)	200,396	6,480	3.33%

PLANH2310

District Population Analysis with County Subtotals

HOUSE DISTRICTS - PLANH2310

	Deviation		Total	Anglo	Non-Anglo	Asian	Black	Hispanic	B+H	%Anglo	%Non-Anglo	%Asian	%Black	%Hispanic	%B+H
DISTRICT 128	-1,354	Total:	192,949	86,212	106,737	4,832	23,251	76,158	97,724	44.7	55.3	2.5	12.1	39.5	50.6
	-0.70 %	VAP:	142,045	69,774	72,271	3,583	15,883	50,065	65,196	49.1	50.9	2.5	11.2	35.2	45.9
Harris (4%)			192,949	86,212	106,737	4,832	23,251	76,158	97,724	44.7	55.3	2.5	12.1	39.5	50.6
DISTRICT 129	7,593	Total:	201,896	98,219	103,677	22,755	19,576	58,727	76,674	48.6	51.4	11.3	9.7	29.1	38.0
	3.91 %	VAP:	157,245	81,839	75,406	17,449	14,004	41,074	54,313	52.0	48.0	11.1	8.9	26.1	34.5
Harris (4%)			201,896	98,219	103,677	22,755	19,576	58,727	76,674	48.6	51.4	11.3	9.7	29.1	38.0
DISTRICT 135	8,869	Total:	203,172	40,604	162,568	20,108	48,527	94,791	140,209	20.0	80.0	9.9	23.9	46.7	69.0
	4.56 %	VAP:	144,609	32,346	112,263	15,143	32,064	64,709	95,232	22.4	77.6	10.5	22.2	44.7	65.9
Harris (4%)			203,172	40,604	162,568	20,108	48,527	94,791	140,209	20.0	80.0	9.9	23.9	46.7	69.0
DISTRICT 138	4,116	Total:	198,419	73,216	125,203	22,889	19,897	81,554	99,691	36.9	63.1	11.5	10.0	41.1	50.2
	2.12 %	VAP:	152,454	61,924	90,530	18,121	14,323	56,867	70,158	40.6	59.4	11.9	9.4	37.3	46.0
Harris (4%)			198,419	73,216	125,203	22,889	19,897	81,554	99,691	36.9	63.1	11.5	10.0	41.1	50.2
DISTRICT 144	9,657	Total:	203,960	27,741	176,219	6,820	15,572	154,151	167,926	13.6	86.4	3.3	7.6	75.6	82.3
	4.97 %	VAP:	146,211	23,873	122,338	5,195	10,526	106,248	115,895	16.3	83.7	3.6	7.2	72.7	79.3
Harris (4%)			203,960	27,741	176,219	6,820	15,572	154,151	167,926	13.6	86.4	3.3	7.6	75.6	82.3
DISTRICT 148	9,336	Total:	203,639	38,683	164,956	17,747	32,124	114,852	145,005	19.0	81.0	8.7	15.8	56.4	71.2
	4.80 %	VAP:	151,087	33,459	117,628	14,117	23,049	79,668	101,673	22.1	77.9	9.3	15.3	52.7	67.3
Harris (4%)			203,639	38,683	164,956	17,747	32,124	114,852	145,005	19.0	81.0	8.7	15.8	56.4	71.2
DISTRICT 149	4,437	Total:	198,740	26,274	172,466	38,185	53,800	81,049	132,279	13.2	86.8	19.2	27.1	40.8	66.6
	2.28 %	VAP:	149,180	22,048	127,132	31,181	37,737	58,099	94,302	14.8	85.2	20.9	25.3	38.9	63.2
Harris (4%)			198,740	26,274	172,466	38,185	53,800	81,049	132,279	13.2	86.8	19.2	27.1	40.8	66.6

**Population and Voter Data
 with Voter Registration Comparison
 HOUSE DISTRICTS - PLANH2310**

District	Deviation		Population							Total Voter Registration			Non-Suspense Voter Registration				
			Total	%Anglo	%Non-Anglo	%Asian	%Black	%Hispanic	%B+H	General Election	Turnout	Total	SSVR	TO/VR	Total	SSVR	TO/VR
128	-1,354	Total:	192,949	44.7	55.3	2.5	12.1	39.5	50.6	2020	68,867	103,757	22.9 %	66.4 %	95,827	23.2 %	71.9 %
	-0.70%	VAP:	142,045	49.1	50.9	2.5	11.2	35.2	45.9	2018	48,908	97,586	21.1 %	50.1 %	88,807	21.5 %	55.1 %
129	7,593	Total:	201,896	48.6	51.4	11.3	9.7	29.1	38.0	2020	91,064	126,555	17.0 %	72.0 %	116,196	17.1 %	78.4 %
	3.91%	VAP:	157,245	52.0	48.0	11.1	8.9	26.1	34.5	2018	68,032	119,189	15.8 %	57.1 %	107,279	16.1 %	63.4 %
135	8,869	Total:	203,172	20.0	80.0	9.9	23.9	46.7	69.0	2020	67,758	101,884	28.6 %	66.5 %	95,262	29.2 %	71.1 %
	4.56%	VAP:	144,609	22.4	77.6	10.5	22.2	44.7	65.9	2018	46,342	92,405	27.6 %	50.2 %	84,640	28.4 %	54.8 %
138	4,116	Total:	198,419	36.9	63.1	11.5	10.0	41.1	50.2	2020	80,764	112,271	19.7 %	71.9 %	104,398	19.8 %	77.4 %
	2.12%	VAP:	152,454	40.6	59.4	11.9	9.4	37.3	46.0	2018	62,089	105,899	18.9 %	58.6 %	96,607	19.1 %	64.3 %
144	9,657	Total:	203,960	13.6	86.4	3.3	7.6	75.6	82.3	2020	46,657	85,062	57.6 %	54.9 %	78,291	58.8 %	59.6 %
	4.97%	VAP:	146,211	16.3	83.7	3.6	7.2	72.7	79.3	2018	34,152	81,527	56.0 %	41.9 %	73,811	57.4 %	46.3 %
148	9,336	Total:	203,639	19.0	81.0	8.7	15.8	56.4	71.2	2020	59,529	93,893	32.4 %	63.4 %	86,542	32.9 %	68.8 %
	4.80%	VAP:	151,087	22.1	77.9	9.3	15.3	52.7	67.3	2018	43,535	88,845	31.6 %	49.0 %	80,449	32.3 %	54.1 %
149	4,437	Total:	198,740	13.2	86.8	19.2	27.1	40.8	66.6	2020	58,226	94,725	24.0 %	61.5 %	87,350	24.5 %	66.7 %
	2.28%	VAP:	149,180	14.8	85.2	20.9	25.3	38.9	63.2	2018	39,635	89,675	23.3 %	44.2 %	80,705	24.2 %	49.1 %

For technical reasons, election results in Texas Legislative Council reports may vary slightly from the official election results. Complete official results for all elections are maintained by the Office of the Texas Secretary of State.
 SSVR = Spanish surname voter registration

Plan Fit Verification
HOUSE DISTRICTS
PLANH2310 Compared with PLANH2187

The amendment DOES NOT FIT into the base plan.

The amendment affects districts in the base plan that are not in the amendment.

WARNING: The amendment unassigns 6669 blocks that were assigned in the base plan.

Incumbents by District

HOUSE DISTRICTS - PLANH2310

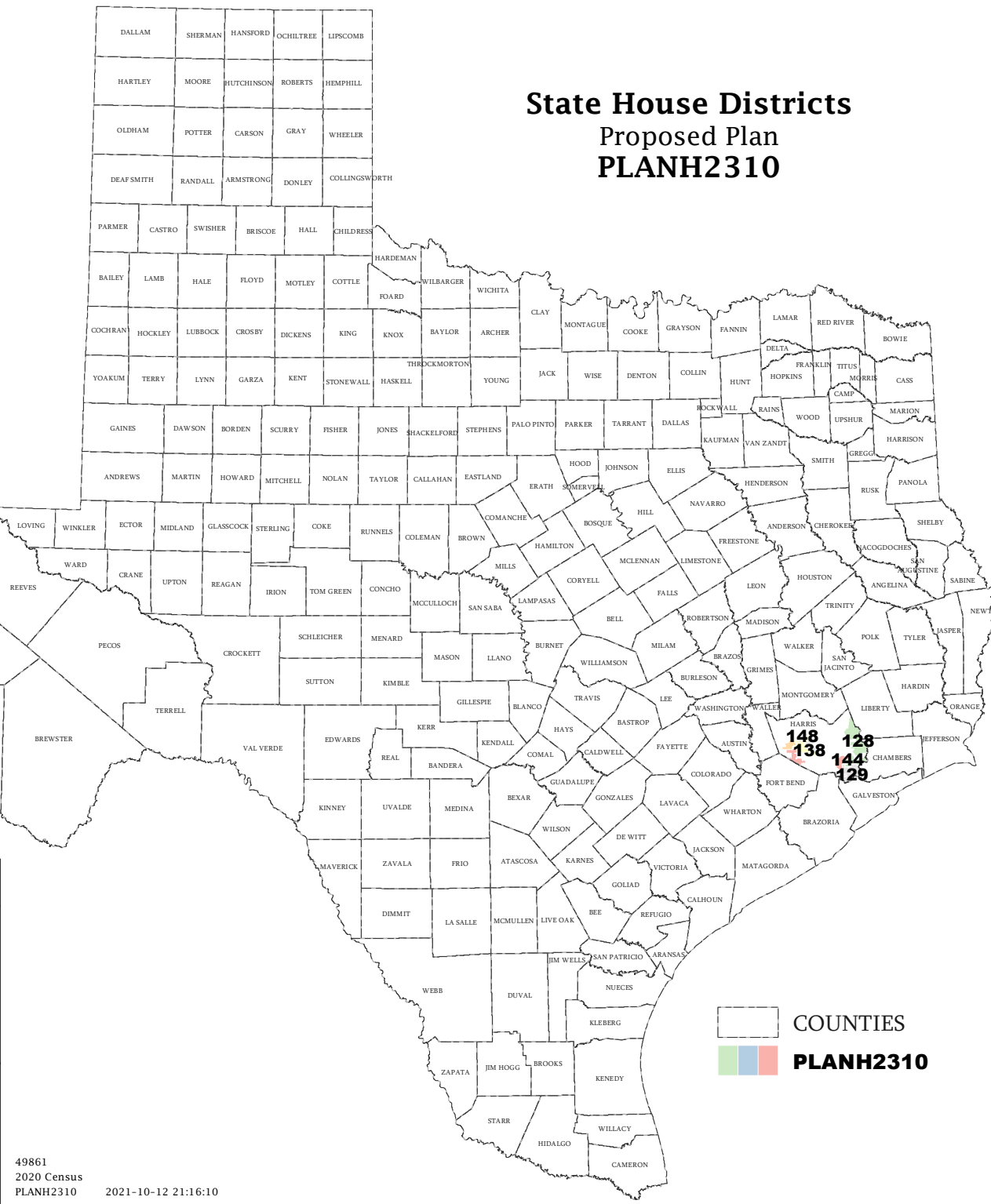
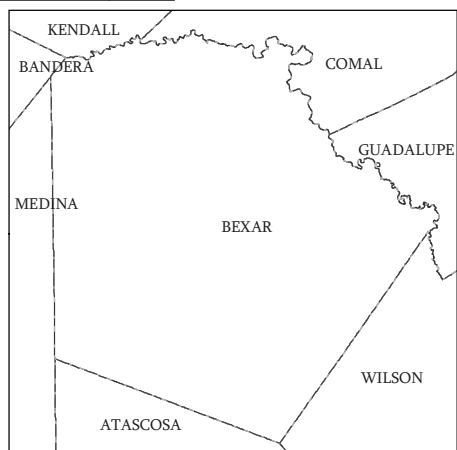
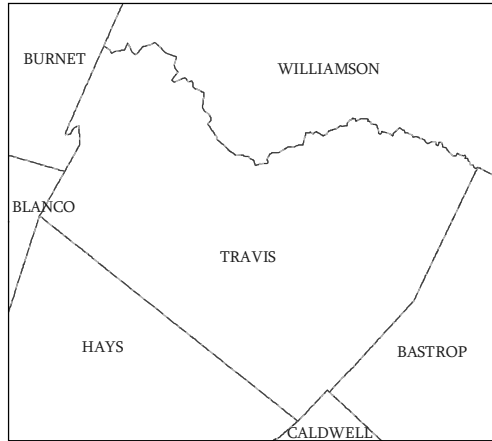
District	Incumbents
128	Cain - R
129	Paul - R
135	Rosenthal - D
138	Hull - R
144	Perez - D
148	Morales Shaw - D
149	Vo - D

**American Community Survey Special Tabulation
 Using Census and American Community Survey Data
 HOUSE DISTRICTS - PLANH2310**

Special Tabulation of Citizen Voting Age Population (CVAP) from the 2015-2019 American Community Survey with Margins of Error														
2020 Census			Hispanic CVAP	Not Hispanic or Latino Citizen Voting Age Population (CVAP)										
District	Total	VAP		CVAP	% Hispanic	% Black Alone	% Black + White	% Black + American Indian	% White Alone	% American Indian Alone	% Asian Alone	% Native Hawaiian Alone	% American Indian + White	% Asian + White
128	192,949	142,045	118,840 (±3,233)	28.9 (±1.7)	10.2 (±1.1)	0.3 (±0.2)	0.0(±0.1)	58.0 (±1.2)	0.3 (±0.2)	1.5 (±0.4)	0.0 (±0.1)	0.4 (±0.2)	0.1 (±0.1)	0.2 (±0.1)
129	201,896	157,245	136,765 (±3,016)	23.0 (±1.4)	7.4 (±0.9)	0.5 (±0.2)	0.1(±0.1)	59.1 (±0.9)	0.2 (±0.1)	8.0 (±0.7)	0.0 (±0.1)	0.6 (±0.2)	0.5 (±0.2)	0.4 (±0.3)
135	203,172	144,609	100,300 (±3,714)	34.9 (±2.4)	23.6 (±2.0)	0.4 (±0.3)	0.1(±0.1)	30.1 (±1.7)	0.2 (±0.2)	9.4 (±1.2)	0.1 (±0.2)	0.2 (±0.2)	0.6 (±0.3)	0.3 (±0.2)
138	198,419	152,454	112,070 (±2,717)	25.5 (±1.5)	9.0 (±1.1)	0.3 (±0.2)	0.0(±0.1)	54.9 (±0.9)	0.2 (±0.2)	9.3 (±0.9)	0.0 (±0.1)	0.3 (±0.2)	0.3 (±0.1)	0.3 (±0.2)
144	203,960	146,211	107,960 (±3,248)	64.8 (±1.8)	8.6 (±1.1)	0.2 (±0.2)	0.2(±0.3)	22.8 (±1.1)	0.1 (±0.2)	2.8 (±0.5)	0.0 (±0.1)	0.3 (±0.2)	0.1 (±0.2)	0.0 (±0.1)
148	203,639	151,087	114,430 (±3,323)	37.7 (±1.8)	18.7 (±1.6)	0.3 (±0.2)	0.0(±0.1)	32.7 (±1.2)	0.2 (±0.2)	9.5 (±1.0)	0.1 (±0.2)	0.4 (±0.2)	0.2 (±0.1)	0.2 (±0.2)
149	198,740	149,180	116,320 (±3,621)	31.4 (±1.9)	24.3 (±1.7)	0.3 (±0.2)	0.1(±0.2)	22.1 (±1.2)	0.3 (±0.2)	20.7 (±1.3)	0.0 (±0.1)	0.2 (±0.2)	0.5 (±0.3)	0.1 (±0.1)

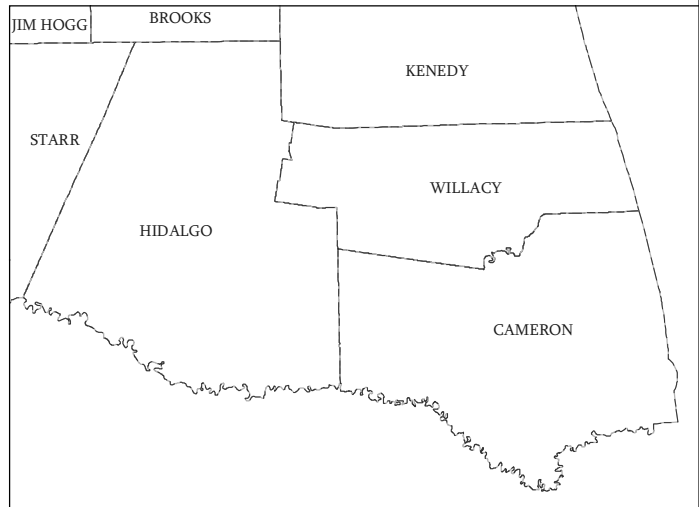
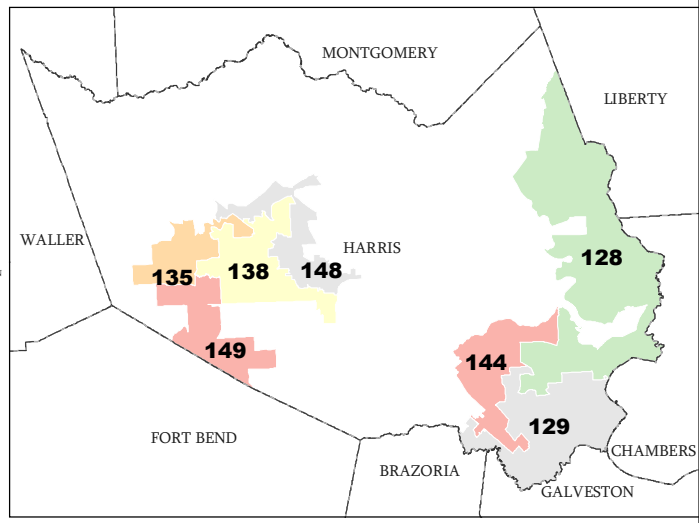
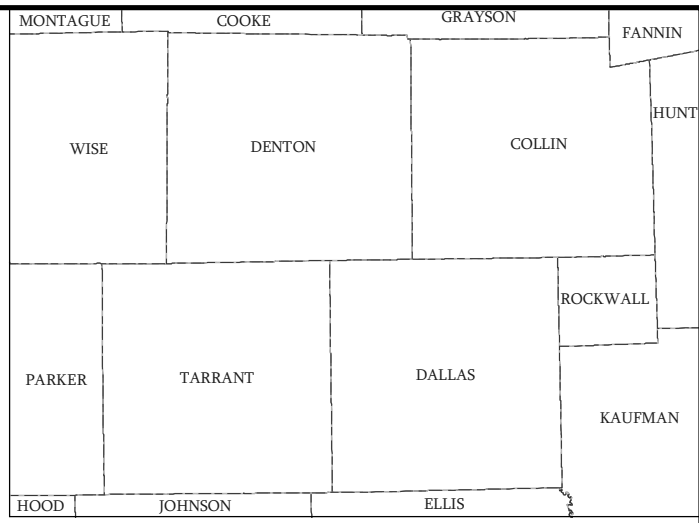
The American Community Survey provided estimated citizen voting age population (CVAP) data at the block group level in a Special Tabulation. Because the MOE can only be calculated using whole block groups, all block groups with more than 50% of the population in a district are included in the analysis. The Red-118 report provides a summary of the block groups used in the analysis.
 The percent for each CVAP population category is that group's CVAP divided by the CVAP total.
 Numbers in parentheses are margins of error at 90% confidence level.

State House Districts Proposed Plan PLANH2310



COUNTIES

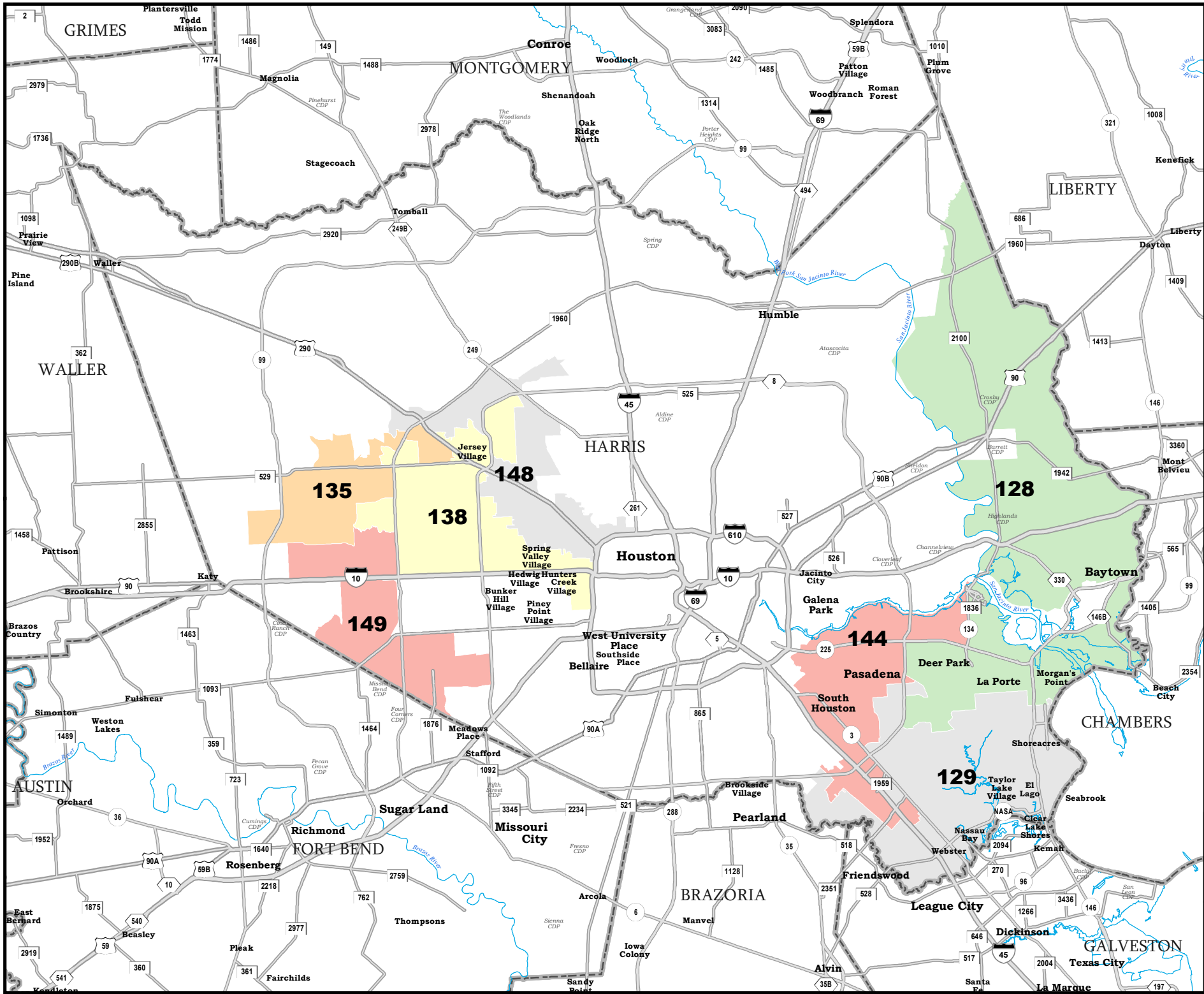
PLANH2310



Map ID 5900
10/12/21 22:15:31



49861
2020 Census
PLANH2310 2021-10-12 21:16:10



HARRIS COUNTY

State House Districts Proposed Plan PLANH2310

 COUNTIES
 PLANH2310

