

District Population Analysis with County Subtotals
SENATE DISTRICTS - PLANS2141

| | |
|---------------------------|------------|
| Total State Population | 29,145,505 |
| Total Districts Required | 31 |
| Ideal District Population | 940,178 |
| Unassigned Population | 25,400,887 |
| Districts in Plan | 4 |
| Unassigned Geography | Yes |
| Districts Contiguous | Yes |

| | Population | -----Deviation----- | |
|------------------------|-------------------|----------------------------|----------------|
| | | Total | Percent |
| Plan Overall Range | | 45,561 | 4.85% |
| Smallest District (17) | 914,054 | -26,124 | -2.78% |
| Largest District (4) | 959,615 | 19,437 | 2.07% |
| Average (mean) | 936,155 | 15,405 | 1.64% |

PLANS2141

District Population Analysis with County Subtotals

SENATE DISTRICTS - PLANS2141

| | Deviation | | Total | Anglo | Non-Anglo | Asian | Black | Hispanic | B+H | %Anglo | %Non-Anglo | %Asian | %Black | %Hispanic | %B+H |
|--------------------|-----------|--------|---------|---------|-----------|---------|---------|----------|---------|--------|------------|--------|--------|-----------|------|
| DISTRICT 4 | 19,437 | Total: | 959,615 | 496,471 | 463,144 | 43,055 | 129,243 | 273,480 | 396,144 | 51.7 | 48.3 | 4.5 | 13.5 | 28.5 | 41.3 |
| | 2.07 % | VAP: | 708,861 | 393,542 | 315,319 | 30,936 | 89,788 | 179,294 | 265,990 | 55.5 | 44.5 | 4.4 | 12.7 | 25.3 | 37.5 |
| Chambers (100%) | | | 46,571 | 29,858 | 16,713 | 879 | 3,763 | 10,952 | 14,512 | 64.1 | 35.9 | 1.9 | 8.1 | 23.5 | 31.2 |
| Galveston (1%) | | | 2,770 | 2,289 | 481 | 38 | 37 | 321 | 349 | 82.6 | 17.4 | 1.4 | 1.3 | 11.6 | 12.6 |
| Harris (7%) | | | 327,530 | 140,266 | 187,264 | 15,183 | 67,803 | 100,264 | 164,830 | 42.8 | 57.2 | 4.6 | 20.7 | 30.6 | 50.3 |
| Jefferson (24%) | | | 61,123 | 19,599 | 41,524 | 2,153 | 18,769 | 20,120 | 38,513 | 32.1 | 67.9 | 3.5 | 30.7 | 32.9 | 63.0 |
| Montgomery (84%) | | | 521,621 | 304,459 | 217,162 | 24,802 | 38,871 | 141,823 | 177,940 | 58.4 | 41.6 | 4.8 | 7.5 | 27.2 | 34.1 |
| DISTRICT 5 | -12,732 | Total: | 927,446 | 505,469 | 421,977 | 50,212 | 106,136 | 251,718 | 350,384 | 54.5 | 45.5 | 5.4 | 11.4 | 27.1 | 37.8 |
| | -1.35 % | VAP: | 715,688 | 416,175 | 299,513 | 36,572 | 76,906 | 172,344 | 245,617 | 58.2 | 41.8 | 5.1 | 10.7 | 24.1 | 34.3 |
| Bastrop (100%) | | | 97,216 | 45,751 | 51,465 | 1,287 | 6,873 | 41,484 | 47,762 | 47.1 | 52.9 | 1.3 | 7.1 | 42.7 | 49.1 |
| Brazos (100%) | | | 233,849 | 123,035 | 110,814 | 16,856 | 27,910 | 63,067 | 88,787 | 52.6 | 47.4 | 7.2 | 11.9 | 27.0 | 38.0 |
| Freestone (100%) | | | 19,435 | 12,817 | 6,618 | 143 | 3,038 | 3,155 | 6,112 | 65.9 | 34.1 | 0.7 | 15.6 | 16.2 | 31.4 |
| Leon (100%) | | | 15,719 | 11,659 | 4,060 | 153 | 1,059 | 2,446 | 3,469 | 74.2 | 25.8 | 1.0 | 6.7 | 15.6 | 22.1 |
| Limestone (100%) | | | 22,146 | 12,530 | 9,616 | 245 | 4,117 | 5,013 | 8,945 | 56.6 | 43.4 | 1.1 | 18.6 | 22.6 | 40.4 |
| Madison (100%) | | | 13,455 | 6,984 | 6,471 | 131 | 2,724 | 3,415 | 6,099 | 51.9 | 48.1 | 1.0 | 20.2 | 25.4 | 45.3 |
| Milam (100%) | | | 24,754 | 15,367 | 9,387 | 193 | 2,520 | 6,264 | 8,582 | 62.1 | 37.9 | 0.8 | 10.2 | 25.3 | 34.7 |
| Robertson (100%) | | | 16,757 | 9,505 | 7,252 | 145 | 3,381 | 3,528 | 6,789 | 56.7 | 43.3 | 0.9 | 20.2 | 21.1 | 40.5 |
| San Jacinto (100%) | | | 27,402 | 19,170 | 8,232 | 176 | 2,412 | 4,822 | 7,143 | 70.0 | 30.0 | 0.6 | 8.8 | 17.6 | 26.1 |
| Walker (94%) | | | 71,922 | 36,864 | 35,058 | 1,309 | 16,403 | 16,161 | 32,228 | 51.3 | 48.7 | 1.8 | 22.8 | 22.5 | 44.8 |
| Williamson (63%) | | | 384,791 | 211,787 | 173,004 | 29,574 | 35,699 | 102,363 | 134,468 | 55.0 | 45.0 | 7.7 | 9.3 | 26.6 | 34.9 |
| DISTRICT 17 | -26,124 | Total: | 914,054 | 409,344 | 504,710 | 123,582 | 119,412 | 253,057 | 364,987 | 44.8 | 55.2 | 13.5 | 13.1 | 27.7 | 39.9 |
| | -2.78 % | VAP: | 685,345 | 326,536 | 358,809 | 89,569 | 84,916 | 175,444 | 256,515 | 47.6 | 52.4 | 13.1 | 12.4 | 25.6 | 37.4 |
| Brazoria (32%) | | | 119,236 | 64,023 | 55,213 | 2,184 | 11,229 | 39,831 | 50,038 | 53.7 | 46.3 | 1.8 | 9.4 | 33.4 | 42.0 |
| Colorado (34%) | | | 7,073 | 3,558 | 3,515 | 31 | 988 | 2,466 | 3,379 | 50.3 | 49.7 | 0.4 | 14.0 | 34.9 | 47.8 |
| Fort Bend (34%) | | | 276,888 | 128,191 | 148,697 | 63,504 | 28,280 | 53,372 | 80,176 | 46.3 | 53.7 | 22.9 | 10.2 | 19.3 | 29.0 |
| Harris (9%) | | | 402,820 | 163,376 | 239,444 | 55,779 | 66,186 | 115,281 | 177,484 | 40.6 | 59.4 | 13.8 | 16.4 | 28.6 | 44.1 |
| Jackson (100%) | | | 14,988 | 8,510 | 6,478 | 228 | 1,186 | 4,829 | 5,877 | 56.8 | 43.2 | 1.5 | 7.9 | 32.2 | 39.2 |
| Matagorda (100%) | | | 36,255 | 15,355 | 20,900 | 856 | 4,330 | 15,455 | 19,466 | 42.4 | 57.6 | 2.4 | 11.9 | 42.6 | 53.7 |
| Waller (27%) | | | 15,224 | 8,201 | 7,023 | 736 | 1,175 | 4,856 | 5,935 | 53.9 | 46.1 | 4.8 | 7.7 | 31.9 | 39.0 |
| Wharton (100%) | | | 41,570 | 18,130 | 23,440 | 264 | 6,038 | 16,967 | 22,632 | 43.6 | 56.4 | 0.6 | 14.5 | 40.8 | 54.4 |
| DISTRICT 18 | 3,325 | Total: | 943,503 | 376,130 | 567,373 | 120,367 | 152,476 | 287,527 | 432,071 | 39.9 | 60.1 | 12.8 | 16.2 | 30.5 | 45.8 |
| | 0.35 % | VAP: | 706,103 | 305,590 | 400,513 | 88,079 | 107,223 | 196,470 | 300,177 | 43.3 | 56.7 | 12.5 | 15.2 | 27.8 | 42.5 |
| Aransas (100%) | | | 23,830 | 15,816 | 8,014 | 655 | 394 | 6,158 | 6,486 | 66.4 | 33.6 | 2.7 | 1.7 | 25.8 | 27.2 |
| Austin (100%) | | | 30,167 | 18,480 | 11,687 | 304 | 2,791 | 8,052 | 10,630 | 61.3 | 38.7 | 1.0 | 9.3 | 26.7 | 35.2 |
| Burleson (100%) | | | 17,642 | 11,258 | 6,384 | 118 | 2,145 | 3,712 | 5,737 | 63.8 | 36.2 | 0.7 | 12.2 | 21.0 | 32.5 |
| Calhoun (100%) | | | 20,106 | 8,374 | 11,732 | 1,169 | 534 | 9,858 | 10,271 | 41.6 | 58.4 | 5.8 | 2.7 | 49.0 | 51.1 |
| Colorado (66%) | | | 13,484 | 8,203 | 5,281 | 101 | 1,547 | 3,524 | 4,957 | 60.8 | 39.2 | 0.7 | 11.5 | 26.1 | 36.8 |

District Population Analysis with County Subtotals

SENATE DISTRICTS - PLANS2141

| | Deviation | | Total | Anglo | Non-Anglo | Asian | Black | Hispanic | B+H | %Anglo | %Non-Anglo | %Asian | %Black | %Hispanic | %B+H |
|--------------------|-----------|--------|---------|---------|-----------|---------|---------|----------|---------|--------|------------|--------|--------|-----------|------|
| DISTRICT 18 | 3,325 | Total: | 943,503 | 376,130 | 567,373 | 120,367 | 152,476 | 287,527 | 432,071 | 39.9 | 60.1 | 12.8 | 16.2 | 30.5 | 45.8 |
| | 0.35 % | VAP: | 706,103 | 305,590 | 400,513 | 88,079 | 107,223 | 196,470 | 300,177 | 43.3 | 56.7 | 12.5 | 15.2 | 27.8 | 42.5 |
| De Witt (100%) | | | 19,824 | 10,854 | 8,970 | 105 | 1,867 | 6,890 | 8,564 | 54.8 | 45.2 | 0.5 | 9.4 | 34.8 | 43.2 |
| Fayette (100%) | | | 24,435 | 17,041 | 7,394 | 129 | 1,722 | 5,216 | 6,785 | 69.7 | 30.3 | 0.5 | 7.0 | 21.3 | 27.8 |
| Fort Bend (43%) | | | 351,572 | 88,108 | 263,464 | 93,633 | 73,766 | 95,893 | 166,604 | 25.1 | 74.9 | 26.6 | 21.0 | 27.3 | 47.4 |
| Goliad (100%) | | | 7,012 | 4,246 | 2,766 | 60 | 349 | 2,288 | 2,569 | 60.6 | 39.4 | 0.9 | 5.0 | 32.6 | 36.6 |
| Gonzales (100%) | | | 19,653 | 8,159 | 11,494 | 122 | 1,391 | 9,897 | 11,074 | 41.5 | 58.5 | 0.6 | 7.1 | 50.4 | 56.3 |
| Grimes (100%) | | | 29,268 | 16,910 | 12,358 | 195 | 4,217 | 7,361 | 11,400 | 57.8 | 42.2 | 0.7 | 14.4 | 25.2 | 39.0 |
| Harris (3%) | | | 135,242 | 36,643 | 98,599 | 20,206 | 30,954 | 47,284 | 76,729 | 27.1 | 72.9 | 14.9 | 22.9 | 35.0 | 56.7 |
| Lavaca (100%) | | | 20,337 | 14,564 | 5,773 | 114 | 1,497 | 3,936 | 5,316 | 71.6 | 28.4 | 0.6 | 7.4 | 19.4 | 26.1 |
| Lee (100%) | | | 17,478 | 10,612 | 6,866 | 123 | 1,945 | 4,479 | 6,287 | 60.7 | 39.3 | 0.7 | 11.1 | 25.6 | 36.0 |
| Montgomery (5%) | | | 33,540 | 24,393 | 9,147 | 467 | 1,328 | 6,270 | 7,486 | 72.7 | 27.3 | 1.4 | 4.0 | 18.7 | 22.3 |
| Refugio (100%) | | | 6,741 | 2,864 | 3,877 | 61 | 534 | 3,306 | 3,735 | 42.5 | 57.5 | 0.9 | 7.9 | 49.0 | 55.4 |
| Victoria (100%) | | | 91,319 | 39,330 | 51,989 | 1,758 | 6,843 | 42,931 | 48,751 | 43.1 | 56.9 | 1.9 | 7.5 | 47.0 | 53.4 |
| Walker (6%) | | | 4,478 | 2,959 | 1,519 | 26 | 956 | 417 | 1,352 | 66.1 | 33.9 | 0.6 | 21.3 | 9.3 | 30.2 |
| Waller (73%) | | | 41,570 | 15,293 | 26,277 | 327 | 11,652 | 13,630 | 25,050 | 36.8 | 63.2 | 0.8 | 28.0 | 32.8 | 60.3 |
| Washington (100%) | | | 35,805 | 22,023 | 13,782 | 694 | 6,044 | 6,425 | 12,288 | 61.5 | 38.5 | 1.9 | 16.9 | 17.9 | 34.3 |

**Population and Voter Data
 with Voter Registration Comparison
 SENATE DISTRICTS - PLANS2141**

| District | Deviation | | Total | Population | | | | | | General Election | Turnout | Total Voter Registration | | | Non-Suspense Voter Registration | | |
|----------|-----------|--------|---------|------------|------------|--------|--------|-----------|------|------------------|---------|--------------------------|--------|--------|---------------------------------|--------|--------|
| | | | | %Anglo | %Non-Anglo | %Asian | %Black | %Hispanic | %B+H | | | Total | SSVR | TO/VR | Total | SSVR | TO/VR |
| 4 | 19,437 | Total: | 959,615 | 51.7 | 48.3 | 4.5 | 13.5 | 28.5 | 41.3 | 2020 | 405,782 | 575,106 | 13.2 % | 70.6 % | 522,298 | 13.4 % | 77.7 % |
| | 2.07% | VAP: | 708,861 | 55.5 | 44.5 | 4.4 | 12.7 | 25.3 | 37.5 | 2018 | 291,714 | 528,164 | 12.4 % | 55.2 % | 469,908 | 12.6 % | 62.1 % |
| 5 | -12,732 | Total: | 927,446 | 54.5 | 45.5 | 5.4 | 11.4 | 27.1 | 37.8 | 2020 | 390,308 | 541,921 | 13.7 % | 72.0 % | 490,419 | 13.6 % | 79.6 % |
| | -1.35% | VAP: | 715,688 | 58.2 | 41.8 | 5.1 | 10.7 | 24.1 | 34.3 | 2018 | 287,314 | 486,746 | 13.2 % | 59.0 % | 436,451 | 13.1 % | 65.8 % |
| 17 | -26,124 | Total: | 914,054 | 44.8 | 55.2 | 13.5 | 13.1 | 27.7 | 39.9 | 2020 | 394,538 | 544,369 | 14.8 % | 72.5 % | 499,319 | 14.8 % | 79.0 % |
| | -2.78% | VAP: | 685,345 | 47.6 | 52.4 | 13.1 | 12.4 | 25.6 | 37.4 | 2018 | 293,157 | 503,531 | 14.5 % | 58.2 % | 455,920 | 14.5 % | 64.3 % |
| 18 | 3,325 | Total: | 943,503 | 39.9 | 60.1 | 12.8 | 16.2 | 30.5 | 45.8 | 2020 | 391,572 | 562,110 | 18.8 % | 69.7 % | 518,595 | 18.8 % | 75.5 % |
| | 0.35% | VAP: | 706,103 | 43.3 | 56.7 | 12.5 | 15.2 | 27.8 | 42.5 | 2018 | 280,223 | 516,074 | 18.8 % | 54.3 % | 470,437 | 18.8 % | 59.6 % |

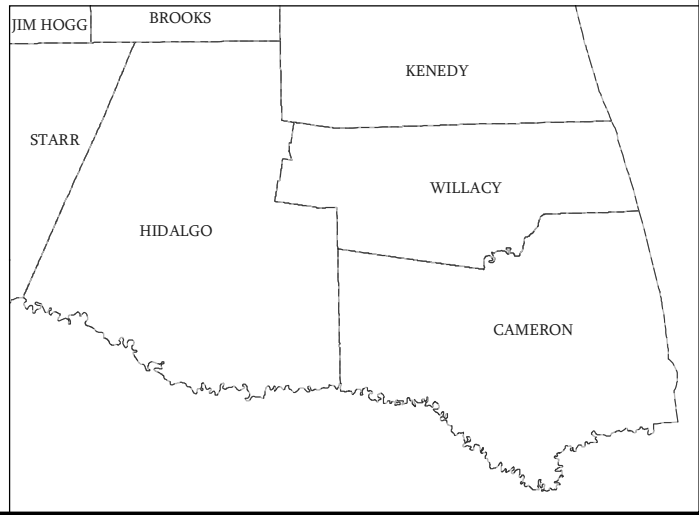
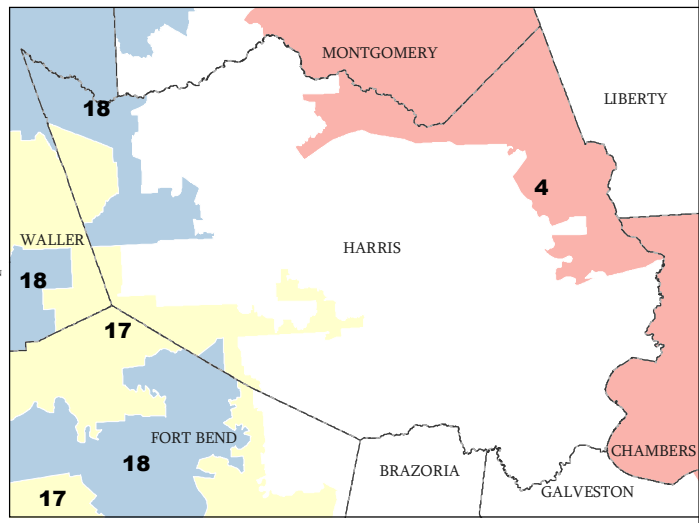
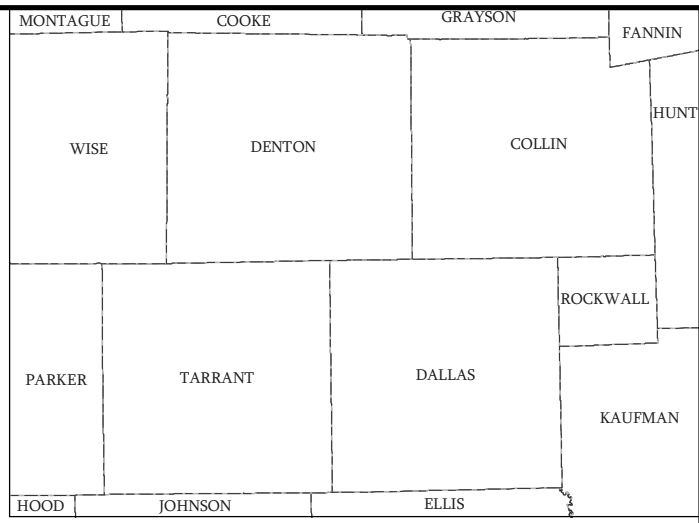
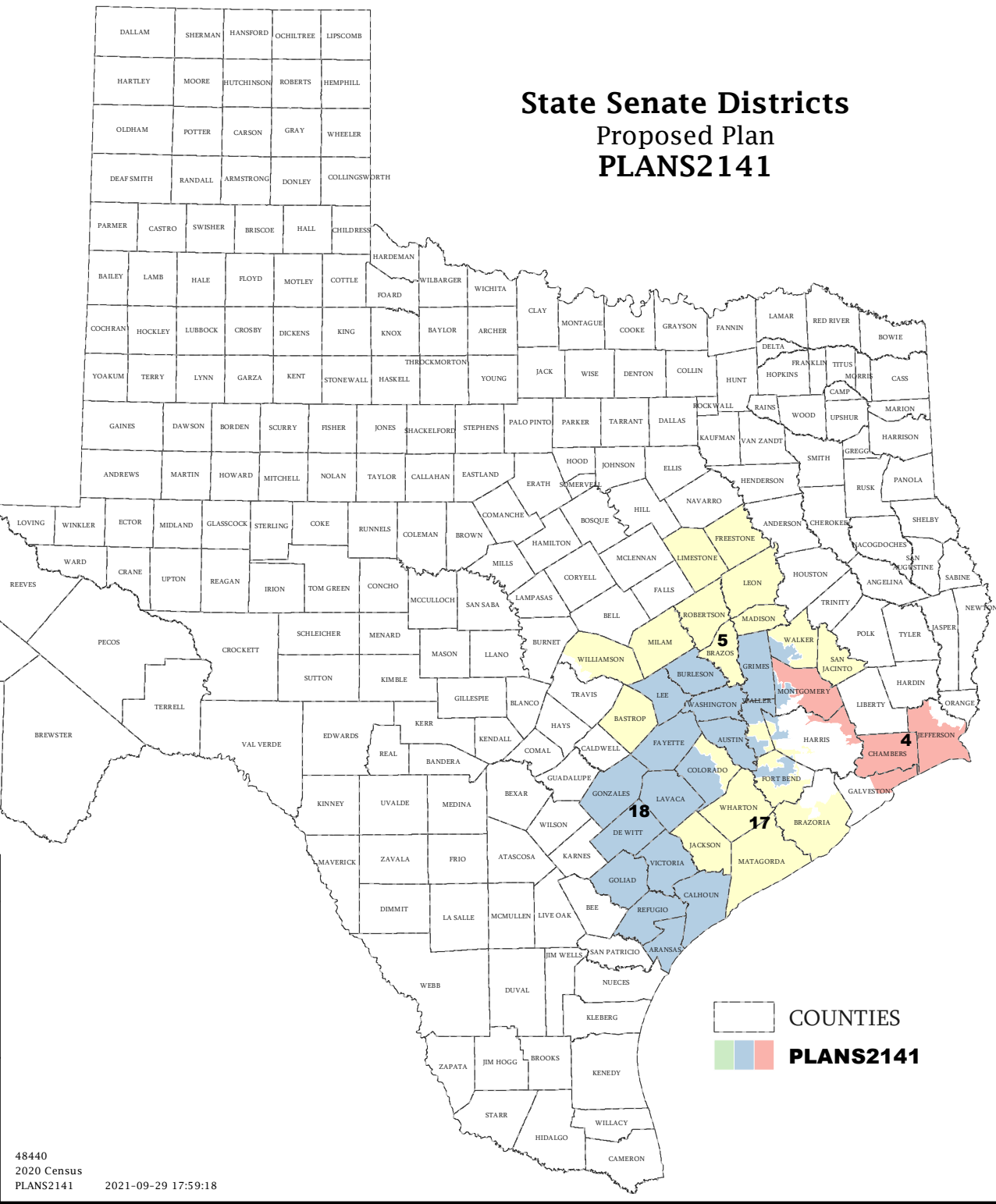
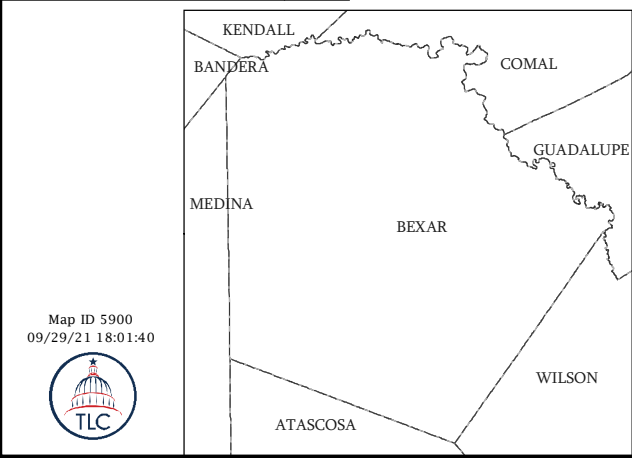
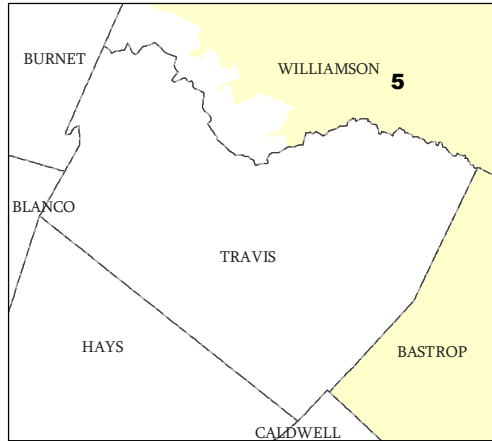
For technical reasons, election results in Texas Legislative Council reports may vary slightly from the official election results. Complete official results for all elections are maintained by the Office of the Texas Secretary of State.
 SSVR = Spanish surname voter registration

Incumbents by District

SENATE DISTRICTS - PLANS2141

| District | Incumbents |
|----------|----------------|
| 4 | Creighton - R |
| 5 | Schwertner - R |
| 17 | Huffman - R |
| 18 | Kolkhorst - R |

State Senate Districts Proposed Plan PLANS2141



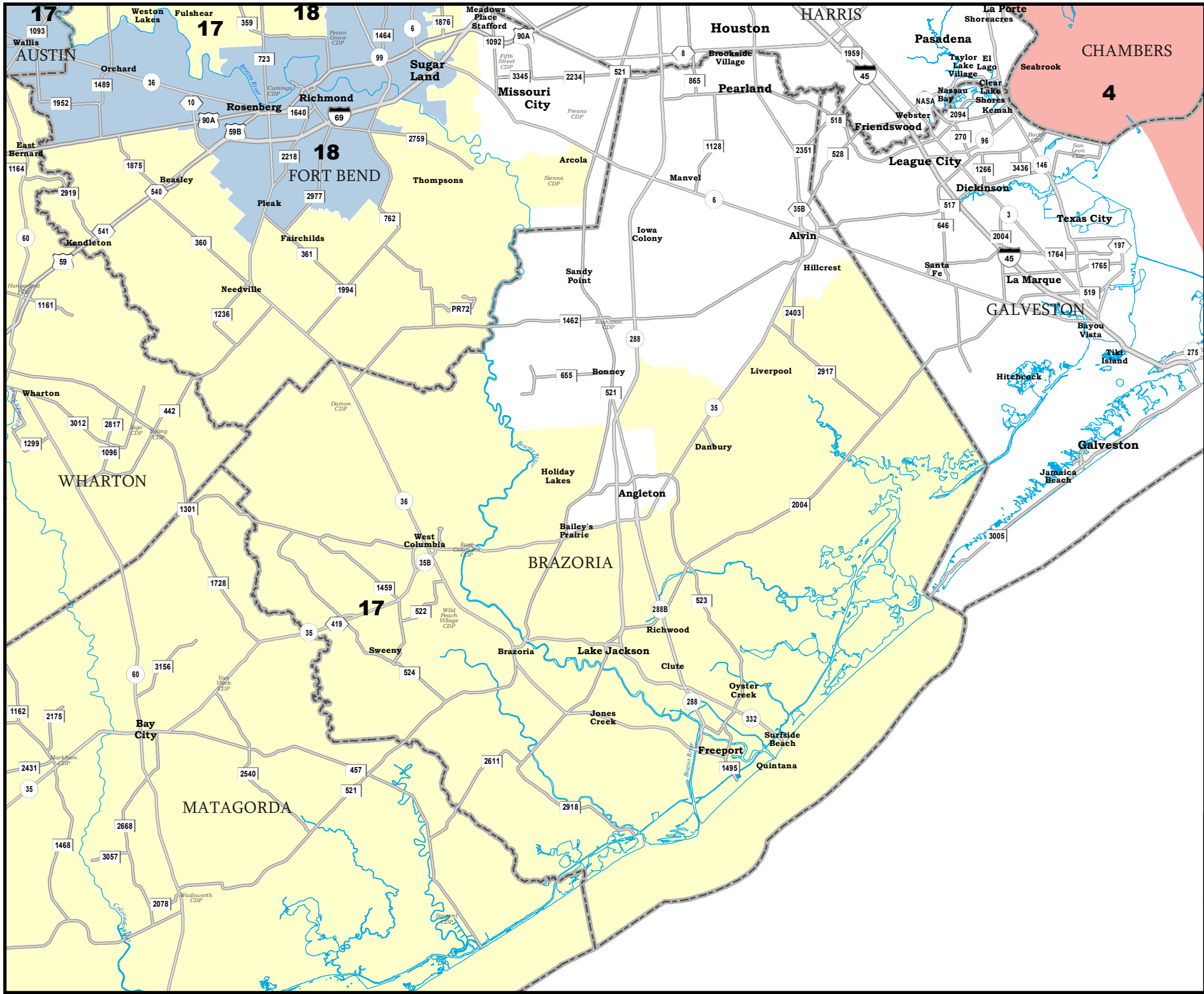
COUNTRIES

 PLANS2141

Map ID 5900
09/29/21 18:01:40



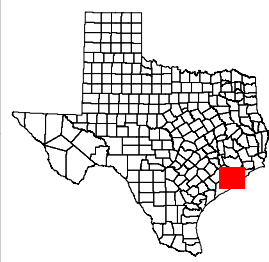
48440
2020 Census
PLANS2141 2021-09-29 17:59:18



BRAZORIA COUNTY

State Senate Districts
Proposed Plan
PLANS2141

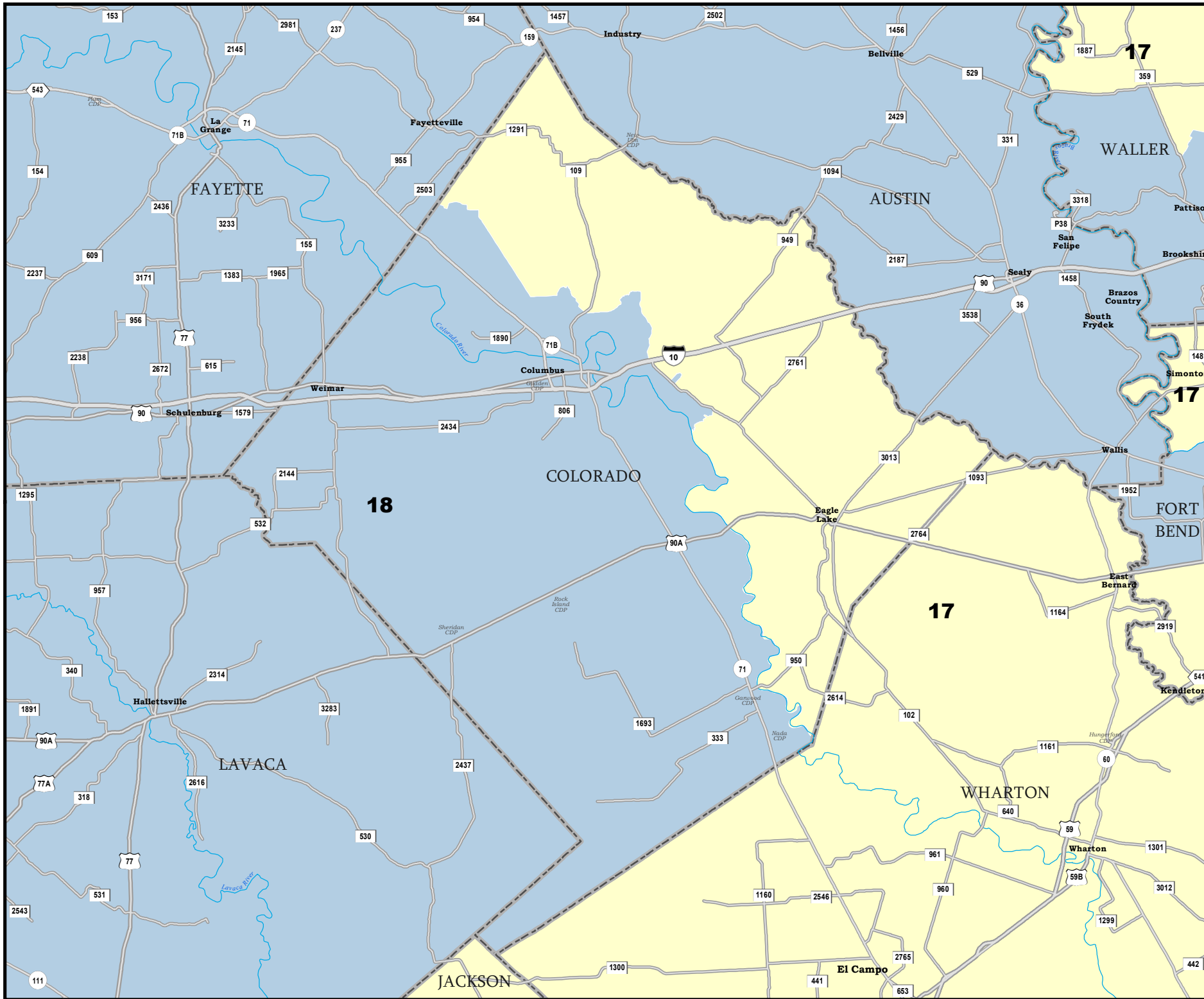
 COUNTIES
 **PLANS2141**



48440
2020 Census
PLANS2141 2021-09-29 17:59:18

Map ID 5900
09/29/21 18:01:40



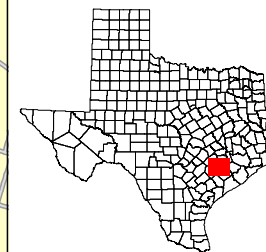


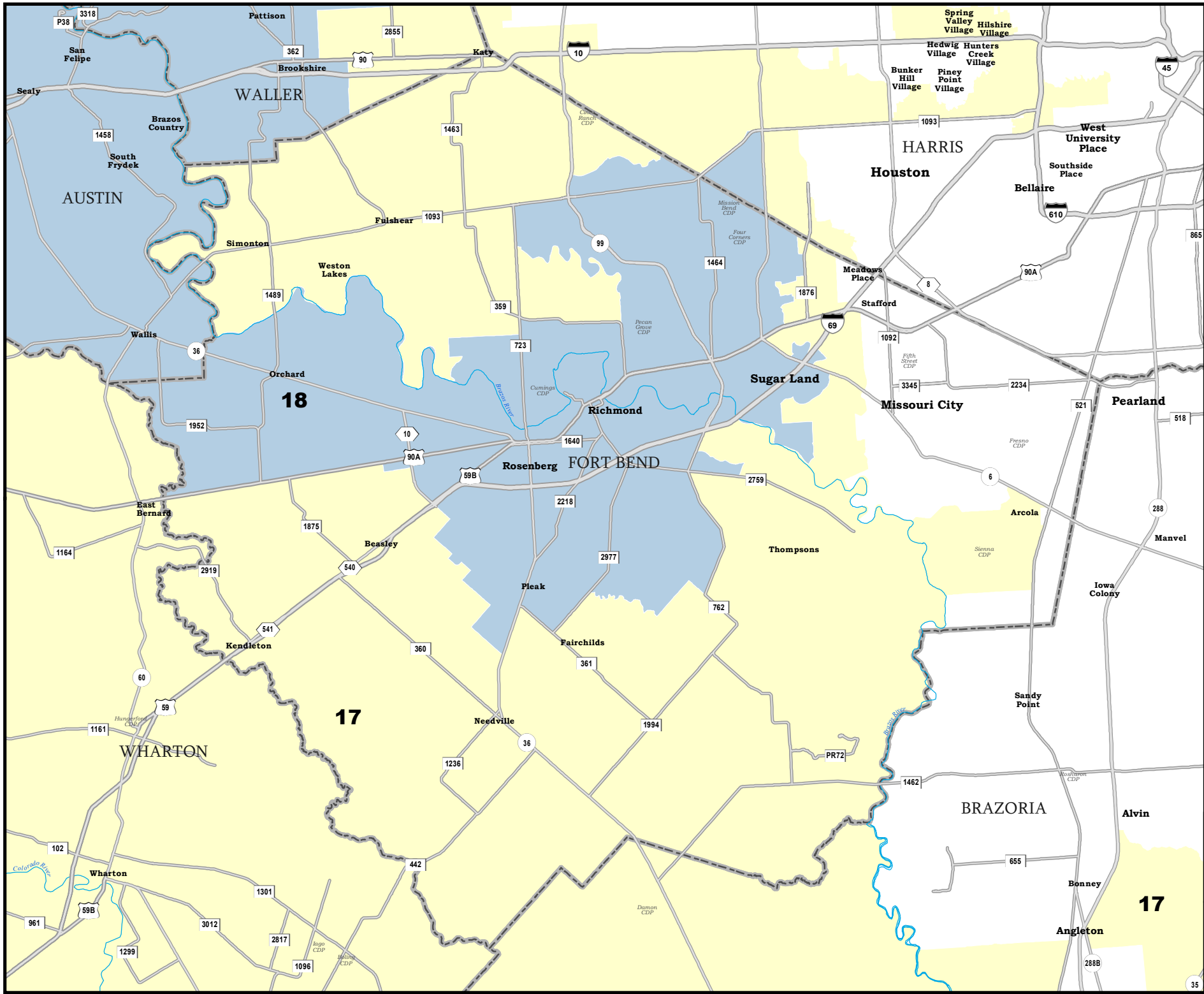
COLORADO COUNTY

State Senate Districts Proposed Plan PLANS2141

 COUNTIES

 **PLANS2141**

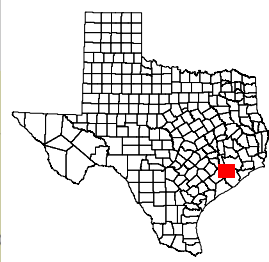


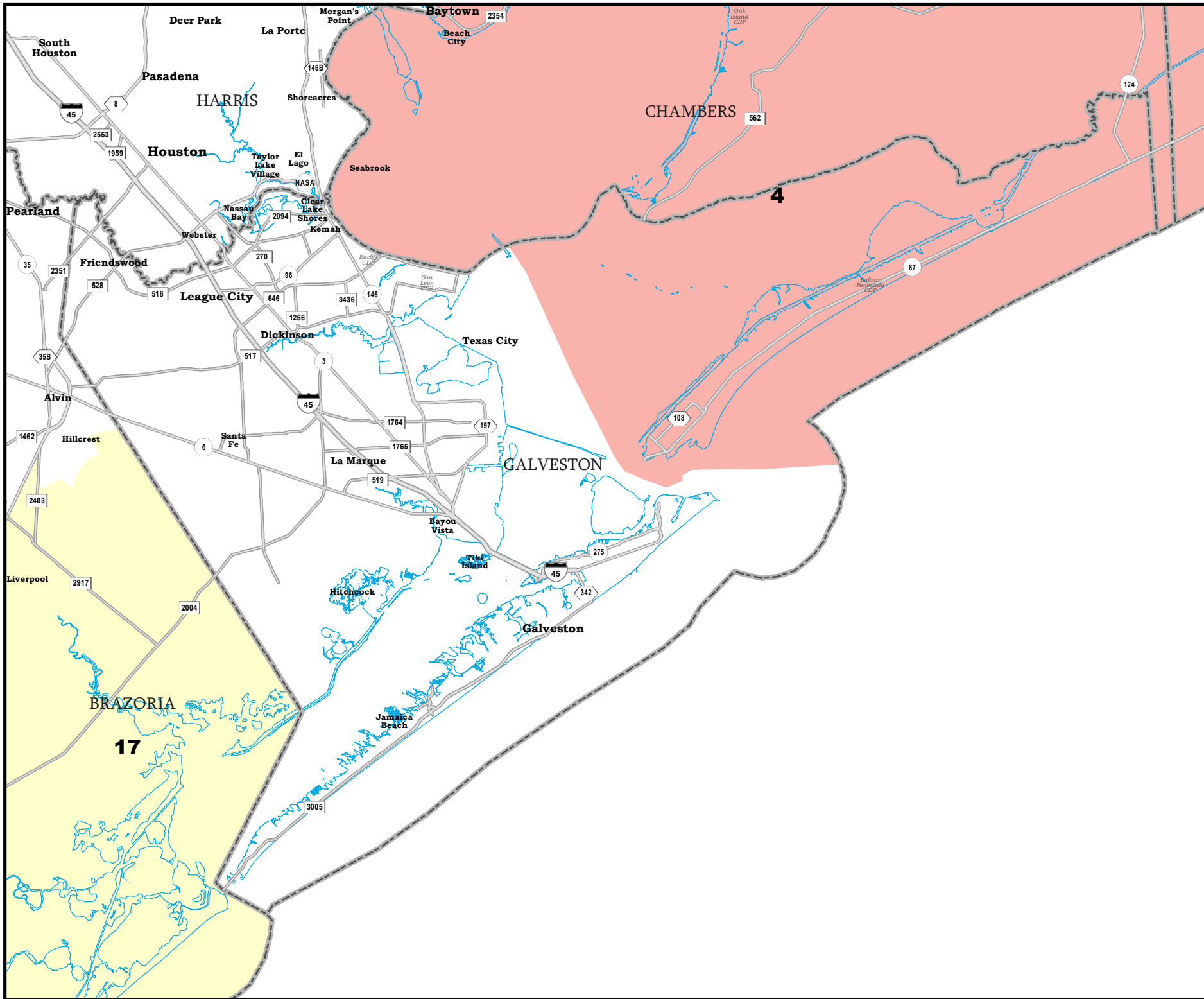


FORT BEND COUNTY

State Senate Districts Proposed Plan PLANS2141

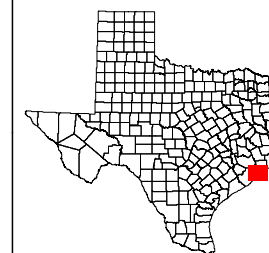
 COUNTIES
 **PLANS2141**

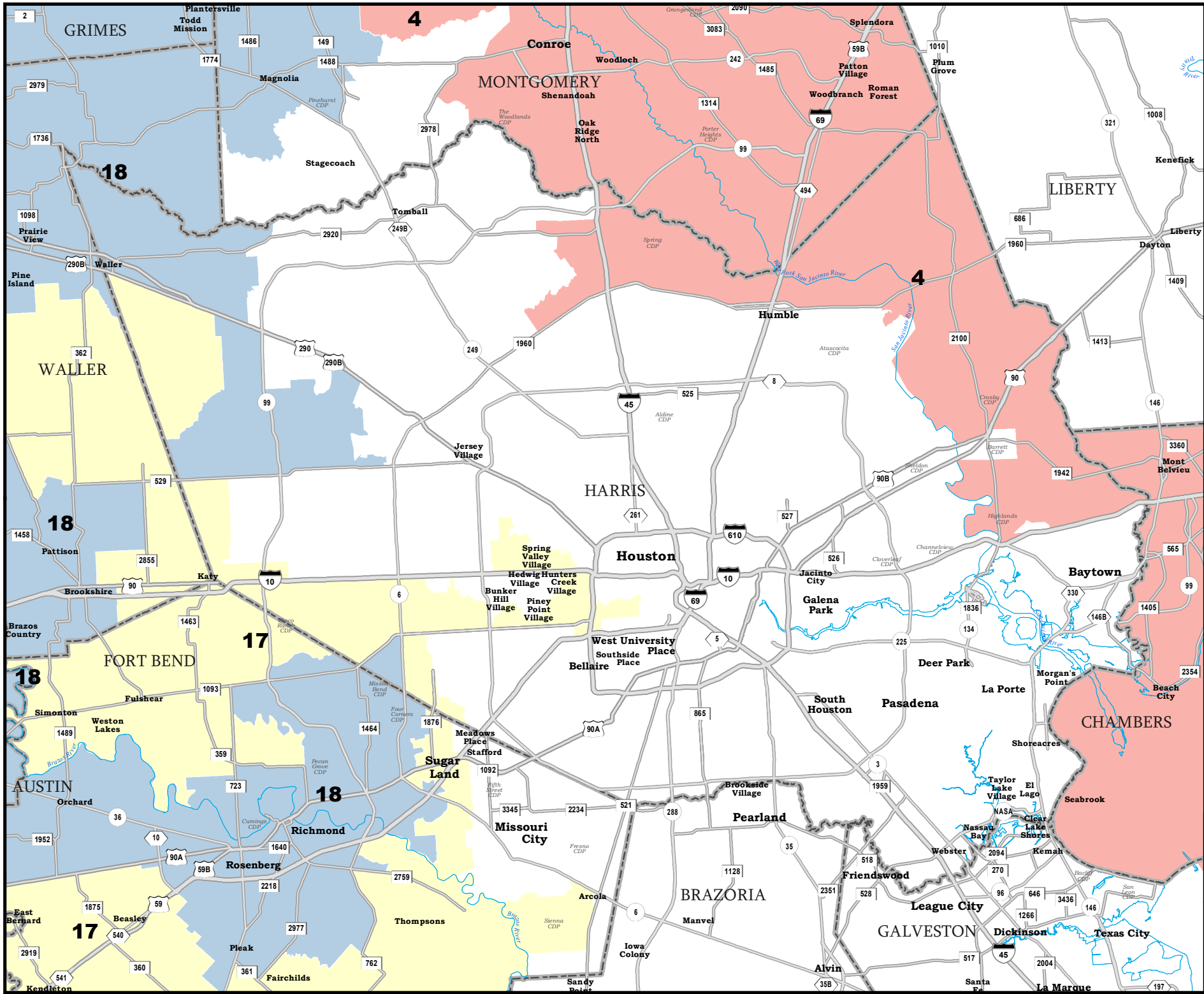




GALVESTON COUNTY

State Senate Districts Proposed Plan PLANS2141

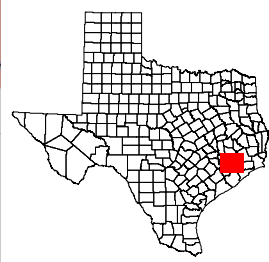




HARRIS COUNTY

State Senate Districts Proposed Plan PLANS2141

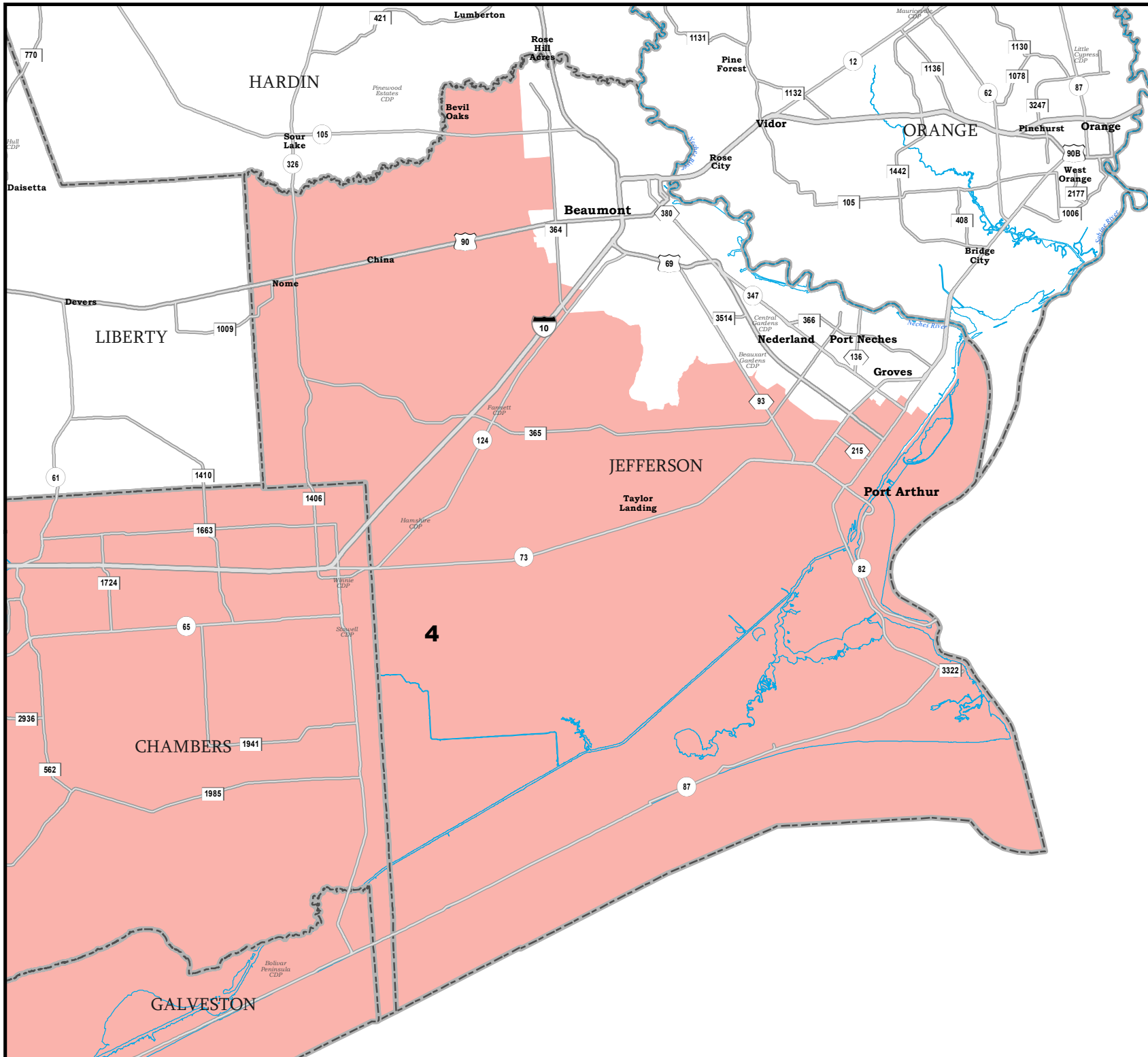
 COUNTIES
 **PLANS2141**



Map ID 5900
09/29/21 18:01:40



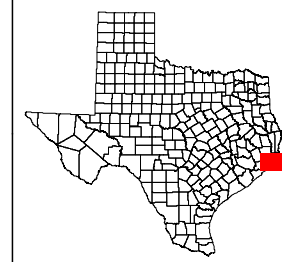
48440
2020 Census
PLANS2141 2021-09-29 17:59:18




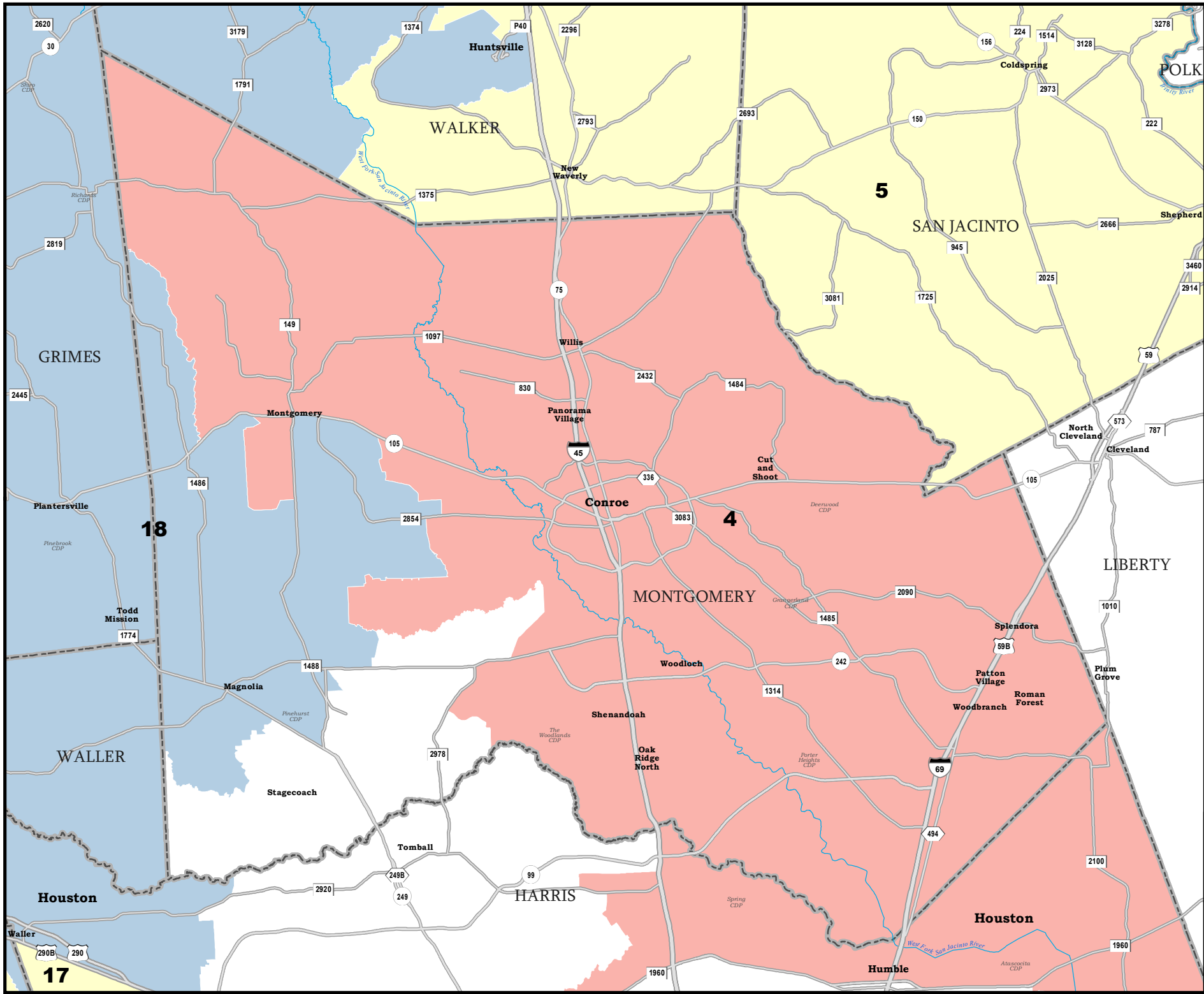
JEFFERSON COUNTY

State Senate Districts Proposed Plan PLANS2141

 COUNTIES
 **PLANS2141**



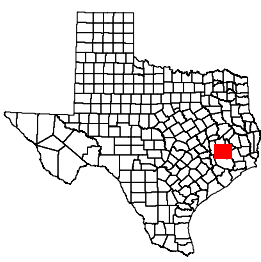
Map ID 5900
 09/29/21 18:01:40
 48440
 2020 Census
 PLANS2141 2021-09-29 17:59:18




MONTGOMERY COUNTY

State Senate Districts Proposed Plan PLANS2141

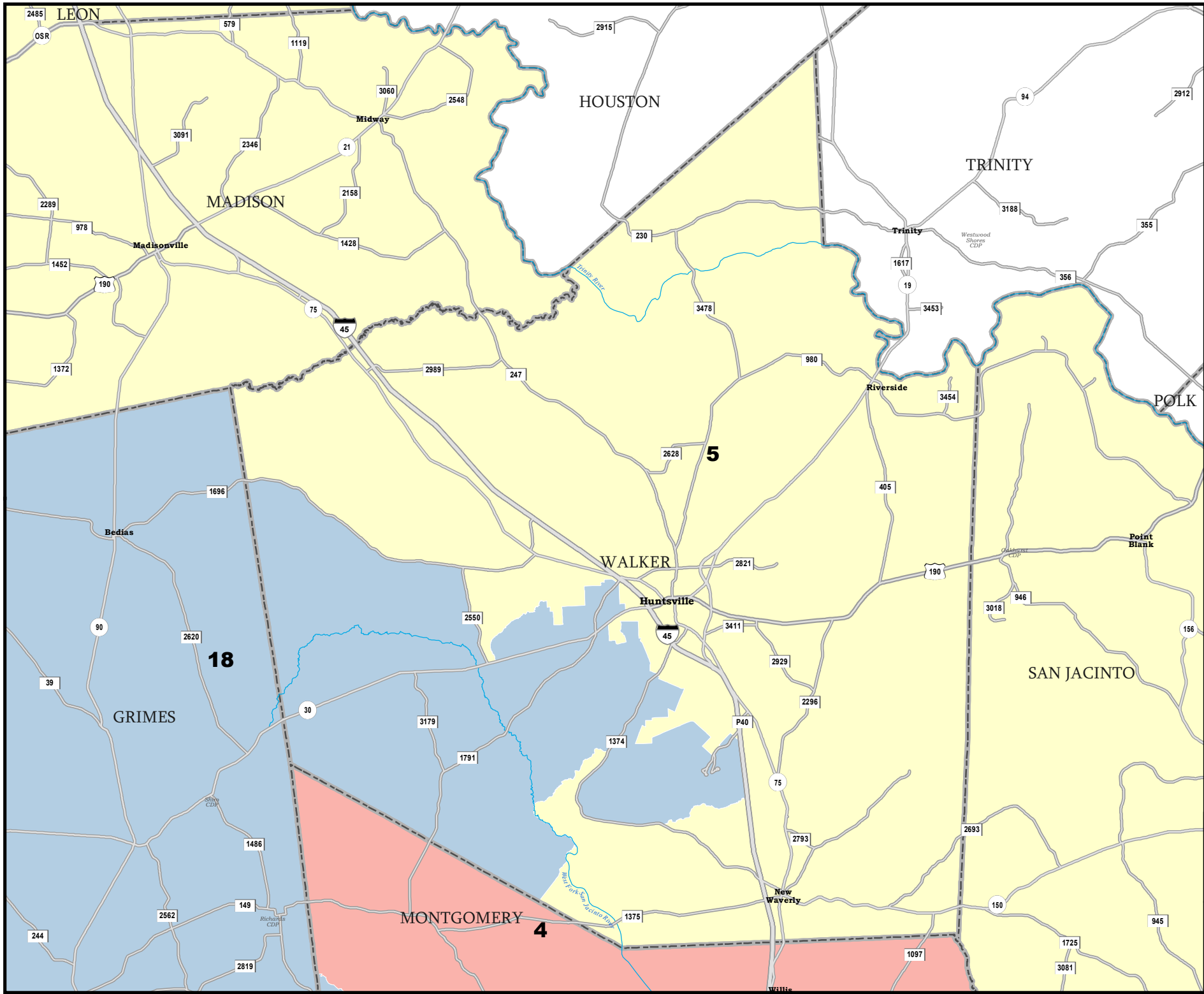
 COUNTIES
 **PLANS2141**



Map ID 5900
09/29/21 18:01:40



48440
2020 Census
PLANS2141 2021-09-29 17:59:18

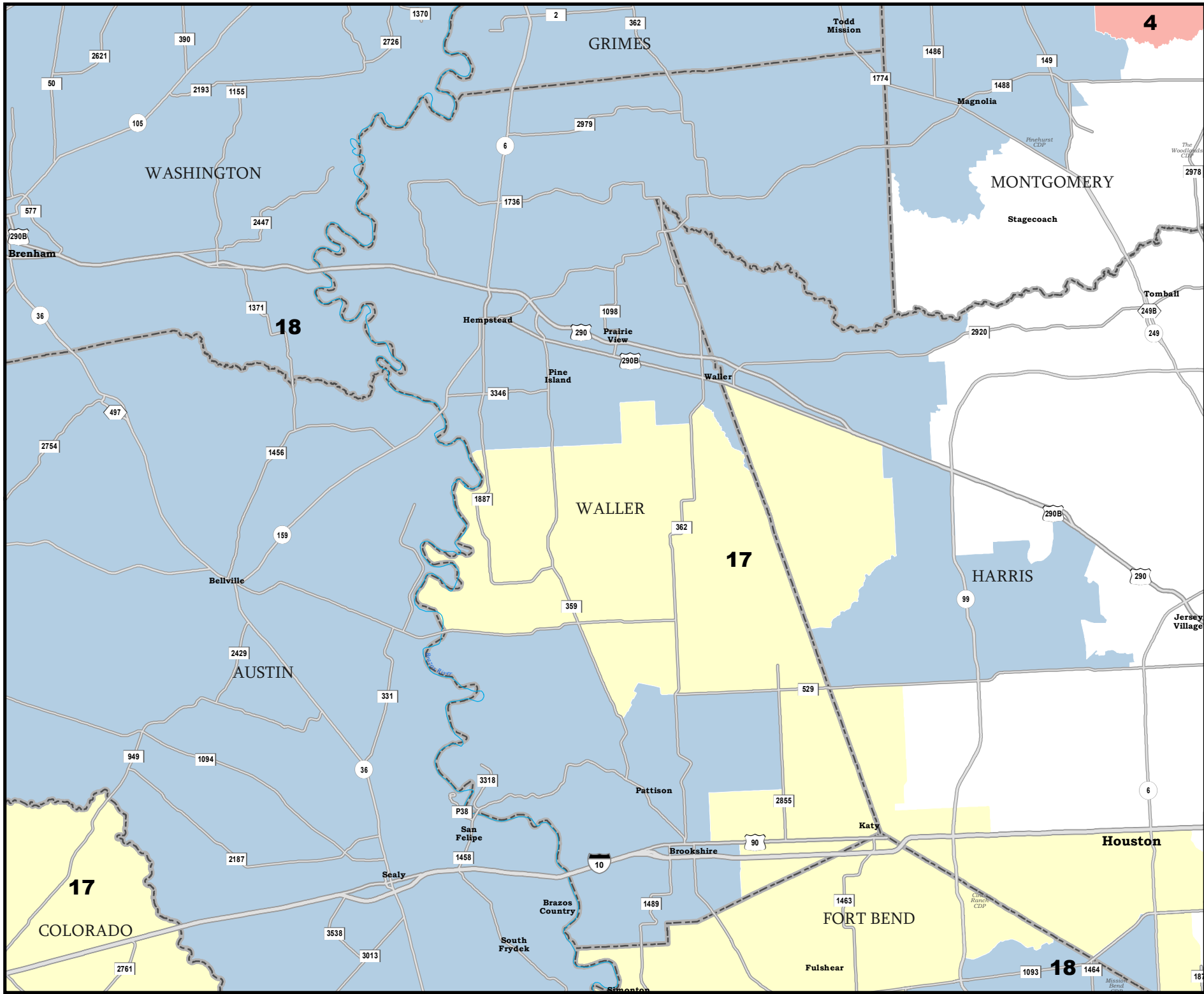


WALKER COUNTY

State Senate Districts Proposed Plan PLANS2141

 COUNTIES
 **PLANS2141**

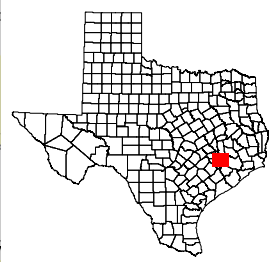




WALLER COUNTY

State Senate Districts Proposed Plan PLANS2141

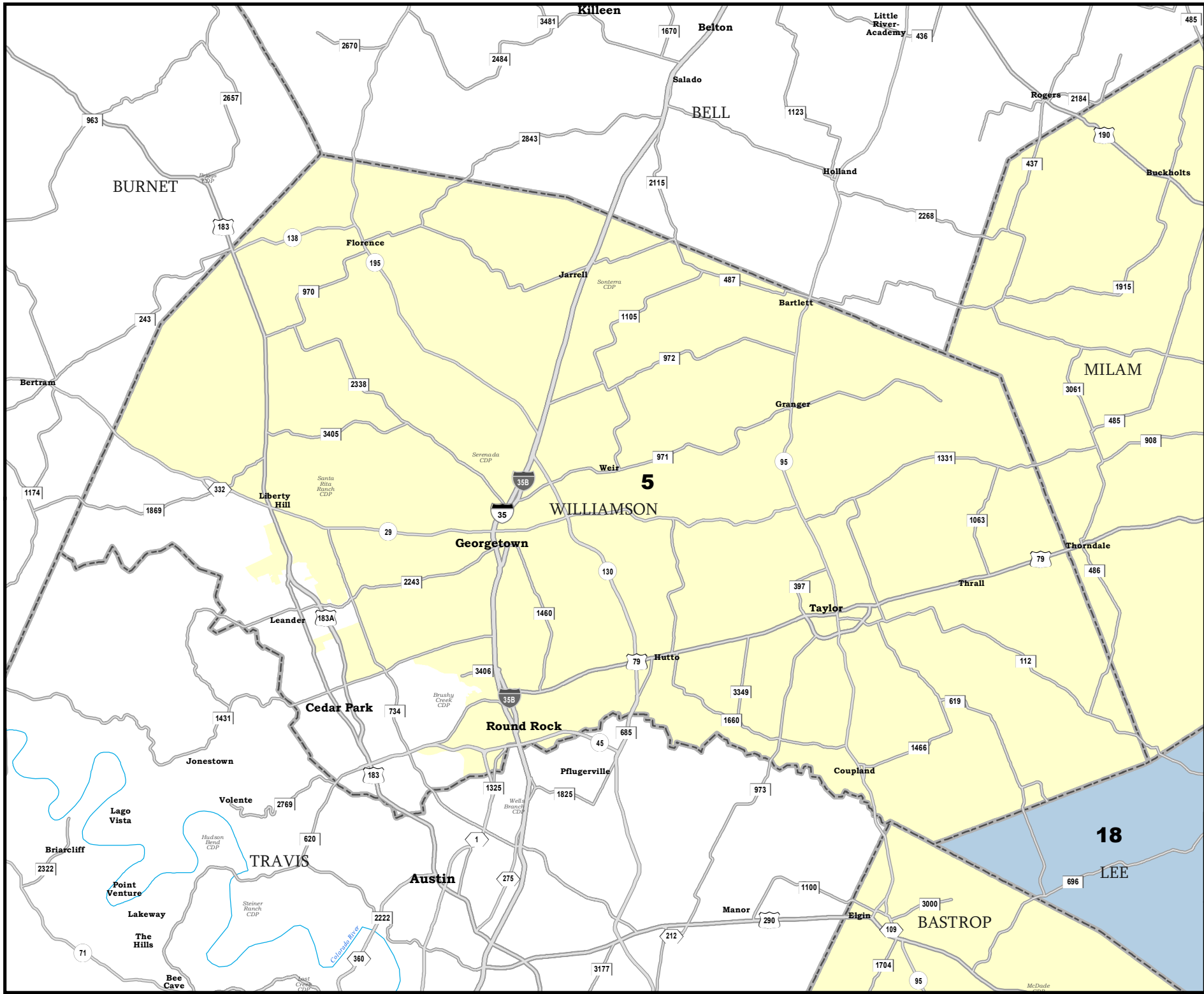
 COUNTIES
 **PLANS2141**



Map ID 5900
09/29/21 18:01:40



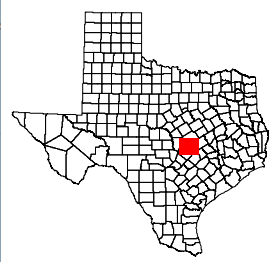
48440
2020 Census
PLANS2141 2021-09-29 17:59:18



WILLIAMSON COUNTY

State Senate Districts Proposed Plan PLANS2141

 COUNTIES
 **PLANS2141**



Map ID 5900
 09/29/21 18:01:40
 48440
 2020 Census
 PLANS2141 2021-09-29 17:59:18
