

District Population Analysis with County Subtotals
SBOE DISTRICTS - PLANE2106

Total State Population	29,145,505
Total Districts Required	15
Ideal District Population	1,943,034
Unassigned Population	0
Districts in Plan	15
Unassigned Geography	No
Districts Contiguous	Yes

	Population	-----Deviation-----	
		Total	Percent
Plan Overall Range		16,565	0.86%
Smallest District (3)	1,935,905	-7,129	-0.37%
Largest District (4)	1,952,470	9,436	0.49%
Average (mean)	1,943,034	4,395	0.23%

PLANE2106

District Population Analysis with County Subtotals

SBOE DISTRICTS - PLANE2106

	Deviation		Total	Anglo	Non-Anglo	Asian	Black	Hispanic	B+H	%Anglo	%Non-Anglo	%Asian	%Black	%Hispanic	%B+H
DISTRICT 1	1,939	Total:	1,944,973	359,643	1,585,330	60,457	87,940	1,439,591	1,509,258	18.5	81.5	3.1	4.5	74.0	77.6
	0.10 %	VAP:	1,442,188	296,334	1,145,854	43,366	60,460	1,036,744	1,088,562	20.5	79.5	3.0	4.2	71.9	75.5
Atascosa (100%)			48,981	16,066	32,915	396	736	31,178	31,684	32.8	67.2	0.8	1.5	63.7	64.7
Bandera (100%)			20,851	15,595	5,256	219	270	4,010	4,247	74.8	25.2	1.1	1.3	19.2	20.4
Bexar (21%)			428,120	149,054	279,066	36,627	40,723	203,485	238,102	34.8	65.2	8.6	9.5	47.5	55.6
Brewster (100%)			9,546	4,948	4,598	164	287	3,963	4,176	51.8	48.2	1.7	3.0	41.5	43.7
Crockett (100%)			3,098	1,080	2,018	23	36	1,920	1,945	34.9	65.1	0.7	1.2	62.0	62.8
Culberson (100%)			2,188	445	1,743	50	48	1,645	1,673	20.3	79.7	2.3	2.2	75.2	76.5
Dimmit (100%)			8,615	898	7,717	94	129	7,487	7,570	10.4	89.6	1.1	1.5	86.9	87.9
Edwards (100%)			1,422	651	771	26	17	718	725	45.8	54.2	1.8	1.2	50.5	51.0
El Paso (100%)			865,657	98,219	767,438	18,392	38,200	715,351	743,885	11.3	88.7	2.1	4.4	82.6	85.9
Frio (100%)			18,385	3,053	15,332	218	767	14,171	14,897	16.6	83.4	1.2	4.2	77.1	81.0
Hudspeth (100%)			3,202	1,094	2,108	22	29	2,036	2,049	34.2	65.8	0.7	0.9	63.6	64.0
Jeff Davis (100%)			1,996	1,282	714	39	28	613	627	64.2	35.8	2.0	1.4	30.7	31.4
Kimble (100%)			4,286	3,136	1,150	60	37	986	1,013	73.2	26.8	1.4	0.9	23.0	23.6
Kinney (100%)			3,129	1,489	1,640	46	66	1,470	1,517	47.6	52.4	1.5	2.1	47.0	48.5
La Salle (100%)			6,664	1,467	5,197	28	259	4,908	5,132	22.0	78.0	0.4	3.9	73.6	77.0
Maverick (100%)			57,887	1,574	56,313	295	307	54,936	55,107	2.7	97.3	0.5	0.5	94.9	95.2
Medina (100%)			50,748	22,324	28,424	528	1,762	25,455	26,930	44.0	56.0	1.0	3.5	50.2	53.1
Menard (100%)			1,962	1,231	731	10	33	662	690	62.7	37.3	0.5	1.7	33.7	35.2
Pecos (100%)			15,193	3,473	11,720	183	630	10,845	11,376	22.9	77.1	1.2	4.1	71.4	74.9
Presidio (100%)			6,131	961	5,170	102	47	4,991	5,032	15.7	84.3	1.7	0.8	81.4	82.1
Real (100%)			2,758	1,940	818	28	50	692	731	70.3	29.7	1.0	1.8	25.1	26.5
Reeves (100%)			14,748	1,697	13,051	205	332	12,510	12,748	11.5	88.5	1.4	2.3	84.8	86.4
Schleicher (100%)			2,451	1,102	1,349	28	44	1,275	1,296	45.0	55.0	1.1	1.8	52.0	52.9
Sutton (100%)			3,372	1,200	2,172	24	32	2,093	2,111	35.6	64.4	0.7	0.9	62.1	62.6
Terrell (100%)			760	352	408	13	22	370	384	46.3	53.7	1.7	2.9	48.7	50.5
Uvalde (100%)			24,564	6,613	17,951	206	268	17,317	17,462	26.9	73.1	0.8	1.1	70.5	71.1
Val Verde (100%)			47,586	7,836	39,750	574	962	38,207	38,861	16.5	83.5	1.2	2.0	80.3	81.7
Webb (100%)			267,114	9,495	257,619	1,774	1,647	254,354	255,249	3.6	96.4	0.7	0.6	95.2	95.6
Zapata (100%)			13,889	796	13,093	41	39	12,999	13,017	5.7	94.3	0.3	0.3	93.6	93.7
Zavala (100%)			9,670	572	9,098	42	133	8,944	9,022	5.9	94.1	0.4	1.4	92.5	93.3
DISTRICT 2	3,186	Total:	1,946,220	337,859	1,608,361	32,294	51,543	1,519,991	1,560,604	17.4	82.6	1.7	2.6	78.1	80.2
	0.16 %	VAP:	1,414,721	283,070	1,131,651	24,123	35,602	1,063,867	1,094,636	20.0	80.0	1.7	2.5	75.2	77.4
Aransas (100%)			23,830	15,816	8,014	655	394	6,158	6,486	66.4	33.6	2.7	1.7	25.8	27.2
Calhoun (100%)			20,106	8,374	11,732	1,169	534	9,858	10,271	41.6	58.4	5.8	2.7	49.0	51.1
Cameron (100%)			421,017	37,107	383,910	3,637	3,410	376,680	378,477	8.8	91.2	0.9	0.8	89.5	89.9
Hidalgo (94%)			816,907	50,989	765,918	10,569	6,939	748,743	752,594	6.2	93.8	1.3	0.8	91.7	92.1

District Population Analysis with County Subtotals

SBOE DISTRICTS - PLANE2106

	Deviation		Total	Anglo	Non-Anglo	Asian	Black	Hispanic	B+H	%Anglo	%Non-Anglo	%Asian	%Black	%Hispanic	%B+H
DISTRICT 2	3,186	Total:	1,946,220	337,859	1,608,361	32,294	51,543	1,519,991	1,560,604	17.4	82.6	1.7	2.6	78.1	80.2
	0.16 %	VAP:	1,414,721	283,070	1,131,651	24,123	35,602	1,063,867	1,094,636	20.0	80.0	1.7	2.5	75.2	77.4
Jackson (100%)			14,988	8,510	6,478	228	1,186	4,829	5,877	56.8	43.2	1.5	7.9	32.2	39.2
Kenedy (100%)			350	73	277	10	12	261	264	20.9	79.1	2.9	3.4	74.6	75.4
Kleberg (100%)			31,040	6,728	24,312	973	1,361	21,920	23,006	21.7	78.3	3.1	4.4	70.6	74.1
Matagorda (100%)			36,255	15,355	20,900	856	4,330	15,455	19,466	42.4	57.6	2.4	11.9	42.6	53.7
Nueces (100%)			353,178	106,165	247,013	10,625	17,679	217,052	231,480	30.1	69.9	3.0	5.0	61.5	65.5
Refugio (100%)			6,741	2,864	3,877	61	534	3,306	3,735	42.5	57.5	0.9	7.9	49.0	55.4
San Patricio (100%)			68,755	26,613	42,142	1,278	1,725	38,220	39,491	38.7	61.3	1.9	2.5	55.6	57.4
Victoria (100%)			91,319	39,330	51,989	1,758	6,843	42,931	48,751	43.1	56.9	1.9	7.5	47.0	53.4
Wharton (100%)			41,570	18,130	23,440	264	6,038	16,967	22,632	43.6	56.4	0.6	14.5	40.8	54.4
Willacy (100%)			20,164	1,805	18,359	211	558	17,611	18,074	9.0	91.0	1.0	2.8	87.3	89.6
DISTRICT 3	-7,129	Total:	1,935,905	485,245	1,450,660	60,108	166,799	1,226,827	1,369,832	25.1	74.9	3.1	8.6	63.4	70.8
	-0.37 %	VAP:	1,452,283	406,018	1,046,265	43,508	118,710	876,193	983,838	28.0	72.0	3.0	8.2	60.3	67.7
Bee (100%)			31,047	8,600	22,447	307	2,558	19,392	21,804	27.7	72.3	1.0	8.2	62.5	70.2
Bexar (79%)			1,581,204	386,678	1,194,526	57,935	155,474	987,473	1,120,663	24.5	75.5	3.7	9.8	62.5	70.9
Brooks (100%)			7,076	724	6,352	48	47	6,242	6,271	10.2	89.8	0.7	0.7	88.2	88.6
De Witt (100%)			19,824	10,854	8,970	105	1,867	6,890	8,564	54.8	45.2	0.5	9.4	34.8	43.2
Duval (100%)			9,831	937	8,894	66	208	7,962	8,133	9.5	90.5	0.7	2.1	81.0	82.7
Goliad (100%)			7,012	4,246	2,766	60	349	2,288	2,569	60.6	39.4	0.9	5.0	32.6	36.6
Gonzales (100%)			19,653	8,159	11,494	122	1,391	9,897	11,074	41.5	58.5	0.6	7.1	50.4	56.3
Hidalgo (6%)			53,874	2,349	51,525	127	163	51,258	51,303	4.4	95.6	0.2	0.3	95.1	95.2
Jim Hogg (100%)			4,838	414	4,424	36	11	4,281	4,287	8.6	91.4	0.7	0.2	88.5	88.6
Jim Wells (100%)			38,891	6,963	31,928	216	414	30,835	31,082	17.9	82.1	0.6	1.1	79.3	79.9
Karnes (100%)			14,710	5,388	9,322	196	1,265	7,734	8,910	36.6	63.4	1.3	8.6	52.6	60.6
Lavaca (100%)			20,337	14,564	5,773	114	1,497	3,936	5,316	71.6	28.4	0.6	7.4	19.4	26.1
Live Oak (100%)			11,335	5,968	5,367	66	275	4,790	5,031	52.7	47.3	0.6	2.4	42.3	44.4
McMullen (100%)			600	353	247	13	17	224	231	58.8	41.2	2.2	2.8	37.3	38.5
Starr (100%)			65,920	1,171	64,749	152	162	64,393	64,454	1.8	98.2	0.2	0.2	97.7	97.8
Wilson (100%)			49,753	27,877	21,876	545	1,101	19,232	20,140	56.0	44.0	1.1	2.2	38.7	40.5
DISTRICT 4	9,436	Total:	1,952,470	265,416	1,687,054	108,336	537,313	1,047,657	1,563,550	13.6	86.4	5.5	27.5	53.7	80.1
	0.49 %	VAP:	1,434,845	225,329	1,209,516	86,469	399,549	723,024	1,111,062	15.7	84.3	6.0	27.8	50.4	77.4
Galveston (4%)			12,997	9,728	3,269	667	358	1,972	2,306	74.8	25.2	5.1	2.8	15.2	17.7
Harris (41%)			1,939,473	255,688	1,683,785	107,669	536,955	1,045,685	1,561,244	13.2	86.8	5.6	27.7	53.9	80.5
DISTRICT 5	-6,610	Total:	1,936,424	928,590	1,007,834	156,074	166,117	663,309	812,652	48.0	52.0	8.1	8.6	34.3	42.0
	-0.34 %	VAP:	1,507,527	774,685	732,842	117,927	123,098	468,071	582,315	51.4	48.6	7.8	8.2	31.0	38.6
Bastrop (100%)			97,216	45,751	51,465	1,287	6,873	41,484	47,762	47.1	52.9	1.3	7.1	42.7	49.1

District Population Analysis with County Subtotals

SBOE DISTRICTS - PLANE2106

	Deviation		Total	Anglo	Non-Anglo	Asian	Black	Hispanic	B+H	%Anglo	%Non-Anglo	%Asian	%Black	%Hispanic	%B+H
DISTRICT 5	-6,610	Total:	1,936,424	928,590	1,007,834	156,074	166,117	663,309	812,652	48.0	52.0	8.1	8.6	34.3	42.0
	-0.34 %	VAP:	1,507,527	774,685	732,842	117,927	123,098	468,071	582,315	51.4	48.6	7.8	8.2	31.0	38.6
Blanco (100%)			11,374	8,707	2,667	100	123	2,092	2,196	76.6	23.4	0.9	1.1	18.4	19.3
Caldwell (100%)			45,883	16,560	29,323	444	2,932	25,468	28,025	36.1	63.9	1.0	6.4	55.5	61.1
Guadalupe (100%)			172,706	84,063	88,643	5,607	16,066	65,233	79,288	48.7	51.3	3.2	9.3	37.8	45.9
Hays (100%)			241,067	121,568	119,499	10,226	13,050	92,871	103,966	50.4	49.6	4.2	5.4	38.5	43.1
Travis (100%)			1,290,188	612,824	677,364	122,447	120,370	421,110	530,292	47.5	52.5	9.5	9.3	32.6	41.1
Williamson (13%)			77,990	39,117	38,873	15,963	6,703	15,051	21,123	50.2	49.8	20.5	8.6	19.3	27.1
DISTRICT 6	-771	Total:	1,942,263	901,510	1,040,753	191,875	253,287	573,591	811,310	46.4	53.6	9.9	13.0	29.5	41.8
	-0.04 %	VAP:	1,466,682	728,398	738,284	142,677	177,862	395,805	565,591	49.7	50.3	9.7	12.1	27.0	38.6
Harris (32%)			1,492,460	625,690	866,770	168,479	220,396	466,275	673,379	41.9	58.1	11.3	14.8	31.2	45.1
Montgomery (72%)			449,803	275,820	173,983	23,396	32,891	107,316	137,931	61.3	38.7	5.2	7.3	23.9	30.7
DISTRICT 7	-778	Total:	1,942,256	878,850	1,063,406	186,109	377,498	477,351	841,034	45.2	54.8	9.6	19.4	24.6	43.3
	-0.04 %	VAP:	1,445,582	697,012	748,570	133,228	272,008	320,580	586,248	48.2	51.8	9.2	18.8	22.2	40.6
Brazoria (100%)			372,031	161,833	210,198	29,997	61,118	115,202	173,026	43.5	56.5	8.1	16.4	31.0	46.5
Chambers (100%)			46,571	29,858	16,713	879	3,763	10,952	14,512	64.1	35.9	1.9	8.1	23.5	31.2
Fort Bend (76%)			622,416	203,525	418,891	124,301	137,084	154,810	286,703	32.7	67.3	20.0	22.0	24.9	46.1
Galveston (94%)			328,800	175,314	153,486	14,538	48,146	85,401	131,070	53.3	46.7	4.4	14.6	26.0	39.9
Hardin (100%)			56,231	46,934	9,297	608	3,559	3,417	6,891	83.5	16.5	1.1	6.3	6.1	12.3
Harris (0%)			18,250	2,014	16,236	1,956	7,846	6,530	14,146	11.0	89.0	10.7	43.0	35.8	77.5
Jasper (100%)			32,980	23,795	9,185	193	5,950	2,198	8,107	72.1	27.9	0.6	18.0	6.7	24.6
Jefferson (100%)			256,526	96,047	160,479	11,256	88,504	58,915	145,686	37.4	62.6	4.4	34.5	23.0	56.8
Liberty (100%)			91,628	50,044	41,584	734	8,052	30,797	38,563	54.6	45.4	0.8	8.8	33.6	42.1
Newton (100%)			12,217	9,249	2,968	50	2,253	344	2,571	75.7	24.3	0.4	18.4	2.8	21.0
Orange (100%)			84,808	64,935	19,873	1,451	8,941	7,265	15,988	76.6	23.4	1.7	10.5	8.6	18.9
Tyler (100%)			19,798	15,302	4,496	146	2,282	1,520	3,771	77.3	22.7	0.7	11.5	7.7	19.0
DISTRICT 8	-6,529	Total:	1,936,505	725,996	1,210,509	192,587	322,510	677,002	981,720	37.5	62.5	9.9	16.7	35.0	50.7
	-0.34 %	VAP:	1,447,882	588,987	858,895	145,588	229,776	463,534	683,929	40.7	59.3	10.1	15.9	32.0	47.2
Fort Bend (24%)			200,363	40,201	160,162	69,975	46,702	43,770	88,782	20.1	79.9	34.9	23.3	21.8	44.3
Galveston (3%)			8,885	6,316	2,569	431	670	1,263	1,887	71.1	28.9	4.9	7.5	14.2	21.2
Grimes (100%)			29,268	16,910	12,358	195	4,217	7,361	11,400	57.8	42.2	0.7	14.4	25.2	39.0
Harris (27%)			1,280,962	426,201	854,761	114,331	216,287	516,219	718,499	33.3	66.7	8.9	16.9	40.3	56.1
Houston (100%)			22,066	12,957	9,109	186	5,462	3,071	8,439	58.7	41.3	0.8	24.8	13.9	38.2
Montgomery (28%)			170,640	95,583	75,057	4,305	9,883	56,773	65,827	56.0	44.0	2.5	5.8	33.3	38.6
Polk (100%)			50,123	34,808	15,315	490	5,422	7,345	12,617	69.4	30.6	1.0	10.8	14.7	25.2
San Jacinto (100%)			27,402	19,170	8,232	176	2,412	4,822	7,143	70.0	30.0	0.6	8.8	17.6	26.1
Trinity (100%)			13,602	10,533	3,069	100	1,269	1,314	2,561	77.4	22.6	0.7	9.3	9.7	18.8

District Population Analysis with County Subtotals

SBOE DISTRICTS - PLANE2106

	Deviation		Total	Anglo	Non-Anglo	Asian	Black	Hispanic	B+H	%Anglo	%Non-Anglo	%Asian	%Black	%Hispanic	%B+H
DISTRICT 8	-6,529	Total:	1,936,505	725,996	1,210,509	192,587	322,510	677,002	981,720	37.5	62.5	9.9	16.7	35.0	50.7
	-0.34 %	VAP:	1,447,882	588,987	858,895	145,588	229,776	463,534	683,929	40.7	59.3	10.1	15.9	32.0	47.2
Walker (100%)			76,400	39,823	36,577	1,335	17,359	16,578	33,580	52.1	47.9	1.7	22.7	21.7	44.0
Waller (100%)			56,794	23,494	33,300	1,063	12,827	18,486	30,985	41.4	58.6	1.9	22.6	32.5	54.6
DISTRICT 9	4,119	Total:	1,947,153	1,007,277	939,876	87,199	339,729	477,712	806,807	51.7	48.3	4.5	17.4	24.5	41.4
	0.21 %	VAP:	1,466,445	816,152	650,293	64,737	242,225	311,437	549,047	55.7	44.3	4.4	16.5	21.2	37.4
Angelina (100%)			86,395	49,970	36,425	1,169	14,115	19,732	33,448	57.8	42.2	1.4	16.3	22.8	38.7
Camp (100%)			12,464	6,734	5,730	154	2,092	3,222	5,262	54.0	46.0	1.2	16.8	25.9	42.2
Cass (100%)			28,454	21,028	7,426	199	4,941	1,336	6,224	73.9	26.1	0.7	17.4	4.7	21.9
Cherokee (100%)			50,412	30,095	20,317	418	7,069	11,797	18,714	59.7	40.3	0.8	14.0	23.4	37.1
Dallas (26%)			687,806	231,634	456,172	65,349	145,724	238,891	379,522	33.7	66.3	9.5	21.2	34.7	55.2
Franklin (100%)			10,359	7,876	2,483	104	534	1,455	1,943	76.0	24.0	1.0	5.2	14.0	18.8
Gregg (100%)			124,239	68,050	56,189	2,137	27,498	24,040	50,879	54.8	45.2	1.7	22.1	19.3	41.0
Harrison (100%)			68,839	42,039	26,800	718	14,553	9,839	24,107	61.1	38.9	1.0	21.1	14.3	35.0
Kaufman (100%)			145,310	78,626	66,684	3,026	24,448	36,165	59,668	54.1	45.9	2.1	16.8	24.9	41.1
Marion (100%)			9,725	6,869	2,856	96	2,026	389	2,380	70.6	29.4	1.0	20.8	4.0	24.5
Morris (100%)			11,973	7,716	4,257	98	2,705	1,182	3,850	64.4	35.6	0.8	22.6	9.9	32.2
Nacogdoches (100%)			64,653	37,158	27,495	1,066	11,610	13,597	24,950	57.5	42.5	1.6	18.0	21.0	38.6
Panola (100%)			22,491	16,098	6,393	178	3,509	2,190	5,633	71.6	28.4	0.8	15.6	9.7	25.0
Rains (100%)			12,164	10,130	2,034	103	360	1,109	1,446	83.3	16.7	0.8	3.0	9.1	11.9
Rockwall (100%)			107,819	70,198	37,621	4,533	9,772	20,560	29,811	65.1	34.9	4.2	9.1	19.1	27.6
Rusk (100%)			52,214	32,022	20,192	349	9,032	9,579	18,445	61.3	38.7	0.7	17.3	18.3	35.3
Sabine (100%)			9,894	8,307	1,587	82	852	393	1,200	84.0	16.0	0.8	8.6	4.0	12.1
San Augustine (100%)			7,918	5,270	2,648	64	1,897	639	2,487	66.6	33.4	0.8	24.0	8.1	31.4
Shelby (100%)			24,022	14,416	9,606	458	4,095	4,685	8,702	60.0	40.0	1.9	17.0	19.5	36.2
Smith (100%)			233,479	134,452	99,027	5,402	41,819	47,281	87,936	57.6	42.4	2.3	17.9	20.3	37.7
Titus (100%)			31,247	13,410	17,837	329	3,347	13,680	16,829	42.9	57.1	1.1	10.7	43.8	53.9
Upshur (100%)			40,892	31,287	9,605	319	3,592	3,986	7,462	76.5	23.5	0.8	8.8	9.7	18.2
Van Zandt (100%)			59,541	47,986	11,555	481	2,018	7,071	9,001	80.6	19.4	0.8	3.4	11.9	15.1
Wood (100%)			44,843	35,906	8,937	367	2,121	4,894	6,908	80.1	19.9	0.8	4.7	10.9	15.4
DISTRICT 10	-5,335	Total:	1,937,699	1,107,606	830,093	94,646	238,915	466,085	685,216	57.2	42.8	4.9	12.3	24.1	35.4
	-0.27 %	VAP:	1,485,031	906,622	578,409	66,759	166,077	314,338	471,186	61.1	38.9	4.5	11.2	21.2	31.7
Anderson (100%)			57,922	33,098	24,824	543	12,253	11,111	23,107	57.1	42.9	0.9	21.2	19.2	39.9
Austin (100%)			30,167	18,480	11,687	304	2,791	8,052	10,630	61.3	38.7	1.0	9.3	26.7	35.2
Bell (100%)			370,647	156,780	213,867	18,271	100,605	93,467	184,933	42.3	57.7	4.9	27.1	25.2	49.9
Brazos (100%)			233,849	123,035	110,814	16,856	27,910	63,067	88,787	52.6	47.4	7.2	11.9	27.0	38.0
Burleson (100%)			17,642	11,258	6,384	118	2,145	3,712	5,737	63.8	36.2	0.7	12.2	21.0	32.5

District Population Analysis with County Subtotals

SBOE DISTRICTS - PLANE2106

	Deviation		Total	Anglo	Non-Anglo	Asian	Black	Hispanic	B+H	%Anglo	%Non-Anglo	%Asian	%Black	%Hispanic	%B+H
DISTRICT 10	-5,335	Total:	1,937,699	1,107,606	830,093	94,646	238,915	466,085	685,216	57.2	42.8	4.9	12.3	24.1	35.4
	-0.27 %	VAP:	1,485,031	906,622	578,409	66,759	166,077	314,338	471,186	61.1	38.9	4.5	11.2	21.2	31.7
Burnet (100%)			49,130	34,810	14,320	629	1,011	11,199	12,068	70.9	29.1	1.3	2.1	22.8	24.6
Colorado (100%)			20,557	11,761	8,796	132	2,535	5,990	8,336	57.2	42.8	0.6	12.3	29.1	40.6
Comal (100%)			161,501	105,250	56,251	3,517	5,409	43,590	48,172	65.2	34.8	2.2	3.3	27.0	29.8
Falls (100%)			16,968	8,707	8,261	106	4,023	3,965	7,845	51.3	48.7	0.6	23.7	23.4	46.2
Fayette (100%)			24,435	17,041	7,394	129	1,722	5,216	6,785	69.7	30.3	0.5	7.0	21.3	27.8
Freestone (100%)			19,435	12,817	6,618	143	3,038	3,155	6,112	65.9	34.1	0.7	15.6	16.2	31.4
Gillespie (100%)			26,725	19,884	6,841	213	245	5,766	5,941	74.4	25.6	0.8	0.9	21.6	22.2
Henderson (100%)			82,150	61,854	20,296	794	5,694	11,242	16,696	75.3	24.7	1.0	6.9	13.7	20.3
Kendall (100%)			44,279	31,767	12,512	743	603	10,029	10,509	71.7	28.3	1.7	1.4	22.6	23.7
Kerr (100%)			52,598	35,791	16,807	851	1,127	13,598	14,502	68.0	32.0	1.6	2.1	25.9	27.6
Lampasas (100%)			21,627	15,132	6,495	512	1,079	4,179	5,135	70.0	30.0	2.4	5.0	19.3	23.7
Lee (100%)			17,478	10,612	6,866	123	1,945	4,479	6,287	60.7	39.3	0.7	11.1	25.6	36.0
Leon (100%)			15,719	11,659	4,060	153	1,059	2,446	3,469	74.2	25.8	1.0	6.7	15.6	22.1
Limestone (100%)			22,146	12,530	9,616	245	4,117	5,013	8,945	56.6	43.4	1.1	18.6	22.6	40.4
Llano (100%)			21,243	17,530	3,713	194	233	2,508	2,687	82.5	17.5	0.9	1.1	11.8	12.6
Madison (100%)			13,455	6,984	6,471	131	2,724	3,415	6,099	51.9	48.1	1.0	20.2	25.4	45.3
Mason (100%)			3,953	2,948	1,005	21	40	883	909	74.6	25.4	0.5	1.0	22.3	23.0
Milam (100%)			24,754	15,367	9,387	193	2,520	6,264	8,582	62.1	37.9	0.8	10.2	25.3	34.7
Robertson (100%)			16,757	9,505	7,252	145	3,381	3,528	6,789	56.7	43.3	0.9	20.2	21.1	40.5
San Saba (100%)			5,730	3,690	2,040	53	150	1,749	1,879	64.4	35.6	0.9	2.6	30.5	32.8
Washington (100%)			35,805	22,023	13,782	694	6,044	6,425	12,288	61.5	38.5	1.9	16.9	17.9	34.3
Williamson (87%)			531,027	297,293	233,734	48,833	44,512	132,037	171,987	56.0	44.0	9.2	8.4	24.9	32.4
DISTRICT 11	3,817	Total:	1,946,851	1,046,101	900,750	152,439	260,032	448,069	694,306	53.7	46.3	7.8	13.4	23.0	35.7
	0.20 %	VAP:	1,467,520	844,312	623,208	110,021	178,307	298,760	470,714	57.5	42.5	7.5	12.2	20.4	32.1
Dallas (5%)			136,703	31,125	105,578	36,385	23,493	44,835	67,217	22.8	77.2	26.6	17.2	32.8	49.2
Hood (100%)			61,598	49,815	11,783	755	931	7,958	8,774	80.9	19.1	1.2	1.5	12.9	14.2
Johnson (52%)			93,579	63,091	30,488	1,017	3,530	22,080	25,194	67.4	32.6	1.1	3.8	23.6	26.9
Parker (100%)			148,222	117,747	30,475	1,990	2,929	19,819	22,473	79.4	20.6	1.3	2.0	13.4	15.2
Somervell (100%)			9,205	7,011	2,194	93	115	1,687	1,773	76.2	23.8	1.0	1.2	18.3	19.3
Tarrant (71%)			1,497,544	777,312	720,232	112,199	229,034	351,690	568,875	51.9	48.1	7.5	15.3	23.5	38.0
DISTRICT 12	7,998	Total:	1,951,032	1,108,778	842,254	242,712	228,673	324,118	543,459	56.8	43.2	12.4	11.7	16.6	27.9
	0.41 %	VAP:	1,470,767	883,948	586,819	172,083	160,558	215,745	371,897	60.1	39.9	11.7	10.9	14.7	25.3
Bowie (100%)			92,893	55,855	37,038	1,506	25,188	7,602	32,451	60.1	39.9	1.6	27.1	8.2	34.9
Collin (100%)			1,064,465	542,472	521,993	206,884	126,186	169,158	289,913	51.0	49.0	19.4	11.9	15.9	27.2
Cooke (100%)			41,668	29,404	12,264	446	1,687	8,519	10,062	70.6	29.4	1.1	4.0	20.4	24.1
Dallas (12%)			312,199	178,989	133,210	24,917	33,618	70,105	102,065	57.3	42.7	8.0	10.8	22.5	32.7

District Population Analysis with County Subtotals

SBOE DISTRICTS - PLANE2106

	Deviation		Total	Anglo	Non-Anglo	Asian	Black	Hispanic	B+H	%Anglo	%Non-Anglo	%Asian	%Black	%Hispanic	%B+H
DISTRICT 12	7,998	Total:	1,951,032	1,108,778	842,254	242,712	228,673	324,118	543,459	56.8	43.2	12.4	11.7	16.6	27.9
	0.41 %	VAP:	1,470,767	883,948	586,819	172,083	160,558	215,745	371,897	60.1	39.9	11.7	10.9	14.7	25.3
Delta (100%)			5,230	4,189	1,041	63	402	394	765	80.1	19.9	1.2	7.7	7.5	14.6
Denton (7%)			64,954	40,189	24,765	3,177	7,682	11,919	19,190	61.9	38.1	4.9	11.8	18.3	29.5
Fannin (100%)			35,662	27,042	8,620	319	2,628	4,218	6,760	75.8	24.2	0.9	7.4	11.8	19.0
Grayson (100%)			135,543	95,211	40,332	2,686	9,856	20,868	30,196	70.2	29.8	2.0	7.3	15.4	22.3
Hopkins (100%)			36,787	25,976	10,811	420	2,847	6,484	9,237	70.6	29.4	1.1	7.7	17.6	25.1
Hunt (100%)			99,956	65,598	34,358	1,552	9,374	19,673	28,642	65.6	34.4	1.6	9.4	19.7	28.7
Lamar (100%)			50,088	35,354	14,734	645	7,310	4,412	11,570	70.6	29.4	1.3	14.6	8.8	23.1
Red River (100%)			11,587	8,499	3,088	97	1,895	766	2,608	73.3	26.7	0.8	16.4	6.6	22.5
DISTRICT 13	2,468	Total:	1,945,502	362,068	1,583,434	78,789	571,368	929,553	1,483,726	18.6	81.4	4.0	29.4	47.8	76.3
	0.13 %	VAP:	1,444,563	320,876	1,123,687	62,321	421,222	630,545	1,043,398	22.2	77.8	4.3	29.2	43.6	72.2
Dallas (51%)			1,332,406	234,496	1,097,910	38,960	395,998	660,336	1,045,091	17.6	82.4	2.9	29.7	49.6	78.4
Tarrant (29%)			613,096	127,572	485,524	39,829	175,370	269,217	438,635	20.8	79.2	6.5	28.6	43.9	71.5
DISTRICT 14	-5,695	Total:	1,937,339	1,073,549	863,790	158,139	223,768	441,074	651,902	55.4	44.6	8.2	11.6	22.8	33.6
	-0.29 %	VAP:	1,461,228	862,105	599,123	112,149	156,467	294,253	444,945	59.0	41.0	7.7	10.7	20.1	30.5
Bosque (100%)			18,235	13,621	4,614	148	503	3,321	3,737	74.7	25.3	0.8	2.8	18.2	20.5
Clay (100%)			10,218	8,941	1,277	87	121	641	745	87.5	12.5	0.9	1.2	6.3	7.3
Comanche (100%)			13,594	9,197	4,397	62	127	3,867	3,949	67.7	32.3	0.5	0.9	28.4	29.0
Coryell (100%)			83,093	46,213	36,880	3,238	15,290	16,482	30,436	55.6	44.4	3.9	18.4	19.8	36.6
Dallas (6%)			144,425	48,743	95,682	37,474	12,902	43,668	55,794	33.7	66.3	25.9	8.9	30.2	38.6
Denton (93%)			841,468	445,457	396,011	103,083	105,956	170,859	271,268	52.9	47.1	12.3	12.6	20.3	32.2
Eastland (100%)			17,725	13,653	4,072	169	497	2,934	3,380	77.0	23.0	1.0	2.8	16.6	19.1
Ellis (100%)			192,455	106,495	85,960	2,639	27,000	52,032	77,843	55.3	44.7	1.4	14.0	27.0	40.4
Erath (100%)			42,545	30,006	12,539	557	1,646	9,254	10,774	70.5	29.5	1.3	3.9	21.8	25.3
Hamilton (100%)			8,222	6,805	1,417	63	68	1,045	1,104	82.8	17.2	0.8	0.8	12.7	13.4
Hill (100%)			35,874	24,123	11,751	278	2,527	7,884	10,291	67.2	32.8	0.8	7.0	22.0	28.7
Jack (100%)			8,472	6,358	2,114	72	350	1,521	1,836	75.0	25.0	0.8	4.1	18.0	21.7
Johnson (48%)			86,348	56,135	30,213	1,835	5,358	20,533	25,490	65.0	35.0	2.1	6.2	23.8	29.5
McLennan (100%)			260,579	139,693	120,886	6,704	41,799	68,587	107,816	53.6	46.4	2.6	16.0	26.3	41.4
Mills (100%)			4,456	3,498	958	26	52	728	770	78.5	21.5	0.6	1.2	16.3	17.3
Montague (100%)			19,965	16,342	3,623	129	206	2,361	2,543	81.9	18.1	0.6	1.0	11.8	12.7
Navarro (100%)			52,624	26,996	25,628	586	7,248	16,049	22,992	51.3	48.7	1.1	13.8	30.5	43.7
Palo Pinto (100%)			28,409	20,778	7,631	345	857	5,614	6,367	73.1	26.9	1.2	3.0	19.8	22.4
Wise (100%)			68,632	50,495	18,137	644	1,261	13,694	14,767	73.6	26.4	0.9	1.8	20.0	21.5

District Population Analysis with County Subtotals

SBOE DISTRICTS - PLANE2106

	Deviation		Total	Anglo	Non-Anglo	Asian	Black	Hispanic	B+H	%Anglo	%Non-Anglo	%Asian	%Black	%Hispanic	%B+H
DISTRICT 15	-121	Total:	1,942,913	996,109	946,804	47,462	139,208	729,787	854,062	51.3	48.7	2.4	7.2	37.6	44.0
	-0.01 %	VAP:	1,459,436	804,145	655,291	33,966	95,920	494,423	584,641	55.1	44.9	2.3	6.6	33.9	40.1
Andrews (100%)			18,610	7,405	11,205	153	376	10,400	10,683	39.8	60.2	0.8	2.0	55.9	57.4
Archer (100%)			8,560	7,356	1,204	74	106	742	831	85.9	14.1	0.9	1.2	8.7	9.7
Armstrong (100%)			1,848	1,593	255	28	34	144	162	86.2	13.8	1.5	1.8	7.8	8.8
Bailey (100%)			6,904	2,190	4,714	19	91	4,540	4,600	31.7	68.3	0.3	1.3	65.8	66.6
Baylor (100%)			3,465	2,797	668	22	113	439	534	80.7	19.3	0.6	3.3	12.7	15.4
Borden (100%)			631	528	103	14	16	86	95	83.7	16.3	2.2	2.5	13.6	15.1
Briscoe (100%)			1,435	1,008	427	13	30	368	391	70.2	29.8	0.9	2.1	25.6	27.2
Brown (100%)			38,095	26,672	11,423	382	1,881	8,211	9,884	70.0	30.0	1.0	4.9	21.6	25.9
Callahan (100%)			13,708	11,555	2,153	109	269	1,306	1,545	84.3	15.7	0.8	2.0	9.5	11.3
Carson (100%)			5,807	4,873	934	33	91	558	636	83.9	16.1	0.6	1.6	9.6	11.0
Castro (100%)			7,371	2,328	5,043	49	155	4,784	4,905	31.6	68.4	0.7	2.1	64.9	66.5
Childress (100%)			6,664	3,852	2,812	93	672	1,942	2,585	57.8	42.2	1.4	10.1	29.1	38.8
Cochran (100%)			2,547	912	1,635	16	94	1,527	1,594	35.8	64.2	0.6	3.7	60.0	62.6
Coke (100%)			3,285	2,473	812	17	23	661	671	75.3	24.7	0.5	0.7	20.1	20.4
Coleman (100%)			7,684	6,013	1,671	58	236	1,192	1,396	78.3	21.7	0.8	3.1	15.5	18.2
Collingsworth (100%)			2,652	1,617	1,035	32	148	832	955	61.0	39.0	1.2	5.6	31.4	36.0
Concho (100%)			3,303	2,097	1,206	47	105	1,033	1,121	63.5	36.5	1.4	3.2	31.3	33.9
Cottle (100%)			1,380	902	478	18	128	327	440	65.4	34.6	1.3	9.3	23.7	31.9
Crane (100%)			4,675	1,342	3,333	39	102	3,158	3,237	28.7	71.3	0.8	2.2	67.6	69.2
Crosby (100%)			5,133	2,076	3,057	41	203	2,829	2,965	40.4	59.6	0.8	4.0	55.1	57.8
Dallam (100%)			7,115	3,119	3,996	33	142	3,707	3,837	43.8	56.2	0.5	2.0	52.1	53.9
Dawson (100%)			12,456	4,590	7,866	86	1,004	6,767	7,665	36.8	63.2	0.7	8.1	54.3	61.5
Deaf Smith (100%)			18,583	4,233	14,350	78	290	13,925	14,080	22.8	77.2	0.4	1.6	74.9	75.8
Dickens (100%)			1,770	1,178	592	21	64	512	548	66.6	33.4	1.2	3.6	28.9	31.0
Donley (100%)			3,258	2,537	721	42	227	356	561	77.9	22.1	1.3	7.0	10.9	17.2
Ector (100%)			165,171	51,023	114,148	2,940	9,522	100,051	108,362	30.9	69.1	1.8	5.8	60.6	65.6
Fisher (100%)			3,672	2,496	1,176	27	149	973	1,088	68.0	32.0	0.7	4.1	26.5	29.6
Floyd (100%)			5,402	2,079	3,323	39	207	3,067	3,228	38.5	61.5	0.7	3.8	56.8	59.8
Foard (100%)			1,095	845	250	12	33	197	220	77.2	22.8	1.1	3.0	18.0	20.1
Gaines (100%)			21,598	12,554	9,044	139	356	8,401	8,676	58.1	41.9	0.6	1.6	38.9	40.2
Garza (100%)			5,816	2,162	3,654	56	381	3,272	3,554	37.2	62.8	1.0	6.6	56.3	61.1
Glasscock (100%)			1,116	710	406	2	27	387	399	63.6	36.4	0.2	2.4	34.7	35.8
Gray (100%)			21,227	13,025	8,202	192	1,039	6,347	7,313	61.4	38.6	0.9	4.9	29.9	34.5
Hale (100%)			32,522	10,693	21,829	243	1,807	19,489	21,052	32.9	67.1	0.7	5.6	59.9	64.7
Hall (100%)			2,825	1,589	1,236	30	237	950	1,159	56.2	43.8	1.1	8.4	33.6	41.0
Hansford (100%)			5,285	2,552	2,733	15	43	2,615	2,643	48.3	51.7	0.3	0.8	49.5	50.0

District Population Analysis with County Subtotals

SBOE DISTRICTS - PLANE2106

	Deviation		Total	Anglo	Non-Anglo	Asian	Black	Hispanic	B+H	%Anglo	%Non-Anglo	%Asian	%Black	%Hispanic	%B+H
DISTRICT 15	-121	Total:	1,942,913	996,109	946,804	47,462	139,208	729,787	854,062	51.3	48.7	2.4	7.2	37.6	44.0
	-0.01 %	VAP:	1,459,436	804,145	655,291	33,966	95,920	494,423	584,641	55.1	44.9	2.3	6.6	33.9	40.1
Hardeman (100%)			3,549	2,441	1,108	30	195	818	983	68.8	31.2	0.8	5.5	23.0	27.7
Hartley (100%)			5,382	3,403	1,979	39	249	1,631	1,861	63.2	36.8	0.7	4.6	30.3	34.6
Haskell (100%)			5,416	3,628	1,788	43	268	1,377	1,599	67.0	33.0	0.8	4.9	25.4	29.5
Hemphill (100%)			3,382	2,090	1,292	39	29	1,137	1,156	61.8	38.2	1.2	0.9	33.6	34.2
Hockley (100%)			21,537	9,752	11,785	97	803	10,624	11,295	45.3	54.7	0.5	3.7	49.3	52.4
Howard (100%)			34,860	15,672	19,188	561	2,113	16,174	17,929	45.0	55.0	1.6	6.1	46.4	51.4
Hutchinson (100%)			20,617	13,783	6,834	200	757	4,961	5,589	66.9	33.1	1.0	3.7	24.1	27.1
Irion (100%)			1,513	1,112	401	23	30	349	369	73.5	26.5	1.5	2.0	23.1	24.4
Jones (100%)			19,663	11,485	8,178	158	2,187	5,504	7,599	58.4	41.6	0.8	11.1	28.0	38.6
Kent (100%)			753	657	96	9	11	81	86	87.3	12.7	1.2	1.5	10.8	11.4
King (100%)			265	230	35	4	8	25	31	86.8	13.2	1.5	3.0	9.4	11.7
Knox (100%)			3,353	1,935	1,418	34	210	1,130	1,309	57.7	42.3	1.0	6.3	33.7	39.0
Lamb (100%)			13,045	4,981	8,064	41	544	7,449	7,904	38.2	61.8	0.3	4.2	57.1	60.6
Lipscomb (100%)			3,059	1,786	1,273	18	22	1,123	1,140	58.4	41.6	0.6	0.7	36.7	37.3
Loving (100%)			64	56	8	3	3	1	3	87.5	12.5	4.7	4.7	1.6	4.7
Lubbock (100%)			310,639	154,994	155,645	11,533	31,107	109,170	137,329	49.9	50.1	3.7	10.0	35.1	44.2
Lynn (100%)			5,596	2,960	2,636	34	151	2,352	2,482	52.9	47.1	0.6	2.7	42.0	44.4
Martin (100%)			5,237	2,780	2,457	34	128	2,255	2,359	53.1	46.9	0.6	2.4	43.1	45.0
McCulloch (100%)			7,630	4,904	2,726	65	197	2,369	2,517	64.3	35.7	0.9	2.6	31.0	33.0
Midland (100%)			169,983	76,487	93,496	4,798	12,731	73,331	84,887	45.0	55.0	2.8	7.5	43.1	49.9
Mitchell (100%)			8,990	4,328	4,662	71	1,072	3,454	4,457	48.1	51.9	0.8	11.9	38.4	49.6
Moore (100%)			21,358	6,499	14,859	1,071	832	12,647	13,398	30.4	69.6	5.0	3.9	59.2	62.7
Motley (100%)			1,063	858	205	18	18	153	166	80.7	19.3	1.7	1.7	14.4	15.6
Nolan (100%)			14,738	8,138	6,600	150	953	5,354	6,120	55.2	44.8	1.0	6.5	36.3	41.5
Ochiltree (100%)			10,015	4,245	5,770	58	66	5,470	5,510	42.4	57.6	0.6	0.7	54.6	55.0
Oldham (100%)			1,758	1,325	433	31	77	313	372	75.4	24.6	1.8	4.4	17.8	21.2
Parmer (100%)			9,869	3,187	6,682	36	137	6,504	6,575	32.3	67.7	0.4	1.4	65.9	66.6
Potter (100%)			118,525	50,153	68,372	6,757	14,438	45,193	58,528	42.3	57.7	5.7	12.2	38.1	49.4
Randall (100%)			140,753	95,457	45,296	3,550	6,592	31,583	37,395	67.8	32.2	2.5	4.7	22.4	26.6
Reagan (100%)			3,385	968	2,417	44	78	2,283	2,339	28.6	71.4	1.3	2.3	67.4	69.1
Roberts (100%)			827	717	110	15	21	50	65	86.7	13.3	1.8	2.5	6.0	7.9
Runnels (100%)			9,900	6,062	3,838	65	252	3,354	3,560	61.2	38.8	0.7	2.5	33.9	36.0
Scurry (100%)			16,932	8,637	8,295	140	812	7,139	7,853	51.0	49.0	0.8	4.8	42.2	46.4
Shackelford (100%)			3,105	2,612	493	33	46	363	394	84.1	15.9	1.1	1.5	11.7	12.7
Sherman (100%)			2,782	1,362	1,420	24	60	1,315	1,354	49.0	51.0	0.9	2.2	47.3	48.7
Stephens (100%)			9,101	6,256	2,845	89	327	2,204	2,503	68.7	31.3	1.0	3.6	24.2	27.5

District Population Analysis with County Subtotals

SBOE DISTRICTS - PLANE2106

	Deviation		Total	Anglo	Non-Anglo	Asian	Black	Hispanic	B+H	%Anglo	%Non-Anglo	%Asian	%Black	%Hispanic	%B+H
DISTRICT 15	-121	Total:	1,942,913	996,109	946,804	47,462	139,208	729,787	854,062	51.3	48.7	2.4	7.2	37.6	44.0
	-0.01 %	VAP:	1,459,436	804,145	655,291	33,966	95,920	494,423	584,641	55.1	44.9	2.3	6.6	33.9	40.1
Sterling (100%)			1,372	867	505	29	22	449	465	63.2	36.8	2.1	1.6	32.7	33.9
Stonewall (100%)			1,245	958	287	9	41	226	256	76.9	23.1	0.7	3.3	18.2	20.6
Swisher (100%)			6,971	3,219	3,752	44	524	3,147	3,597	46.2	53.8	0.6	7.5	45.1	51.6
Taylor (100%)			143,208	87,316	55,892	4,299	14,655	34,756	47,874	61.0	39.0	3.0	10.2	24.3	33.4
Terry (100%)			11,831	4,599	7,232	78	540	6,569	7,009	38.9	61.1	0.7	4.6	55.5	59.2
Throckmorton (100%)			1,440	1,248	192	8	17	145	156	86.7	13.3	0.6	1.2	10.1	10.8
Tom Green (100%)			120,003	62,390	57,613	2,752	6,070	47,066	52,091	52.0	48.0	2.3	5.1	39.2	43.4
Upton (100%)			3,308	1,318	1,990	32	120	1,797	1,886	39.8	60.2	1.0	3.6	54.3	57.0
Ward (100%)			11,644	4,506	7,138	113	666	6,325	6,847	38.7	61.3	1.0	5.7	54.3	58.8
Wheeler (100%)			4,990	3,469	1,521	53	137	1,227	1,345	69.5	30.5	1.1	2.7	24.6	27.0
Wichita (100%)			129,350	79,694	49,656	3,968	16,588	25,803	41,265	61.6	38.4	3.1	12.8	19.9	31.9
Wilbarger (100%)			12,887	7,012	5,875	632	1,259	3,734	4,910	54.4	45.6	4.9	9.8	29.0	38.1
Winkler (100%)			7,791	2,702	5,089	114	210	4,732	4,883	34.7	65.3	1.5	2.7	60.7	62.7
Yoakum (100%)			7,694	2,488	5,206	72	110	4,968	5,057	32.3	67.7	0.9	1.4	64.6	65.7
Young (100%)			17,867	13,409	4,458	132	324	3,508	3,790	75.0	25.0	0.7	1.8	19.6	21.2

**Population and Voter Data
 with Voter Registration Comparison
 SBOE DISTRICTS - PLANE2106**

District	Deviation	Population								Total Voter Registration			Non-Suspense Voter Registration				
		Total	%Anglo	%Non-Anglo	%Asian	%Black	%Hispanic	%B+H	General Election	Turnout	Total	SSVR	TO/VR	Total	SSVR	TO/VR	
1	1,939 0.10%	Total:	1,944,973	18.5	81.5	3.1	4.5	74.0	77.6	2020	676,624	1,142,029	60.0 %	59.2 %	1,026,587	61.1 %	65.9 %
		VAP:	1,442,188	20.5	79.5	3.0	4.2	71.9	75.5	2018	493,261	1,062,959	60.7 %	46.4 %	957,914	62.0 %	51.5 %
2	3,186 0.16%	Total:	1,946,220	17.4	82.6	1.7	2.6	78.1	80.2	2020	593,654	1,027,867	64.7 %	57.8 %	934,602	65.6 %	63.5 %
		VAP:	1,414,721	20.0	80.0	1.7	2.5	75.2	77.4	2018	424,917	974,989	64.8 %	43.6 %	882,155	65.9 %	48.2 %
3	-7,129 -0.37%	Total:	1,935,905	25.1	74.9	3.1	8.6	63.4	70.8	2020	708,830	1,127,998	48.8 %	62.8 %	1,003,431	49.7 %	70.6 %
		VAP:	1,452,283	28.0	72.0	3.0	8.2	60.3	67.7	2018	509,121	1,068,239	48.8 %	47.7 %	942,914	49.8 %	54.0 %
4	9,436 0.49%	Total:	1,952,470	13.6	86.4	5.5	27.5	53.7	80.1	2020	558,950	932,395	31.6 %	59.9 %	855,827	32.7 %	65.3 %
		VAP:	1,434,845	15.7	84.3	6.0	27.8	50.4	77.4	2018	417,479	890,919	30.6 %	46.9 %	806,639	31.8 %	51.8 %
5	-6,610 -0.34%	Total:	1,936,424	48.0	52.0	8.1	8.6	34.3	42.0	2020	893,953	1,258,627	18.1 %	71.0 %	1,137,027	18.1 %	78.6 %
		VAP:	1,507,527	51.4	48.6	7.8	8.2	31.0	38.6	2018	690,693	1,143,625	17.9 %	60.4 %	999,847	18.1 %	69.1 %
6	-771 -0.04%	Total:	1,942,263	46.4	53.6	9.9	13.0	29.5	41.8	2020	847,690	1,165,280	14.9 %	72.7 %	1,068,015	15.1 %	79.4 %
		VAP:	1,466,682	49.7	50.3	9.7	12.1	27.0	38.6	2018	622,947	1,071,271	14.4 %	58.2 %	961,395	14.7 %	64.8 %
7	-778 -0.04%	Total:	1,942,256	45.2	54.8	9.6	19.4	24.6	43.3	2020	826,705	1,188,967	13.2 %	69.5 %	1,087,091	13.4 %	76.0 %
		VAP:	1,445,582	48.2	51.8	9.2	18.8	22.2	40.6	2018	605,552	1,104,872	12.7 %	54.8 %	1,002,098	12.8 %	60.4 %
8	-6,529 -0.34%	Total:	1,936,505	37.5	62.5	9.9	16.7	35.0	50.7	2020	703,579	1,038,489	17.7 %	67.8 %	952,861	18.0 %	73.8 %
		VAP:	1,447,882	40.7	59.3	10.1	15.9	32.0	47.2	2018	499,711	961,136	16.9 %	52.0 %	865,786	17.3 %	57.7 %
9	4,119 0.21%	Total:	1,947,153	51.7	48.3	4.5	17.4	24.5	41.4	2020	791,127	1,160,647	10.1 %	68.2 %	1,054,923	10.2 %	75.0 %
		VAP:	1,466,445	55.7	44.3	4.4	16.5	21.2	37.4	2018	600,564	1,093,264	9.4 %	54.9 %	987,096	9.5 %	60.8 %
10	-5,335 -0.27%	Total:	1,937,699	57.2	42.8	4.9	12.3	24.1	35.4	2020	863,821	1,221,514	12.5 %	70.7 %	1,096,554	12.5 %	78.8 %
		VAP:	1,485,031	61.1	38.9	4.5	11.2	21.2	31.7	2018	631,896	1,106,171	12.1 %	57.1 %	981,369	12.0 %	64.4 %
11	3,817 0.20%	Total:	1,946,851	53.7	46.3	7.8	13.4	23.0	35.7	2020	847,697	1,190,971	11.7 %	71.2 %	1,062,713	11.7 %	79.8 %
		VAP:	1,467,520	57.5	42.5	7.5	12.2	20.4	32.1	2018	633,111	1,095,218	11.1 %	57.8 %	956,319	11.2 %	66.2 %
12	7,998 0.41%	Total:	1,951,032	56.8	43.2	12.4	11.7	16.6	27.9	2020	894,868	1,214,090	7.1 %	73.7 %	1,097,134	7.1 %	81.6 %
		VAP:	1,470,767	60.1	39.9	11.7	10.9	14.7	25.3	2018	662,608	1,107,830	6.7 %	59.8 %	989,237	6.7 %	67.0 %
13	2,468 0.13%	Total:	1,945,502	18.6	81.4	4.0	29.4	47.8	76.3	2020	604,307	987,910	24.2 %	61.2 %	882,860	25.1 %	68.4 %
		VAP:	1,444,563	22.2	77.8	4.3	29.2	43.6	72.2	2018	467,477	938,965	23.0 %	49.8 %	825,678	24.1 %	56.6 %
14	-5,695 -0.29%	Total:	1,937,339	55.4	44.6	8.2	11.6	22.8	33.6	2020	835,661	1,178,539	11.1 %	70.9 %	1,068,749	11.1 %	78.2 %
		VAP:	1,461,228	59.0	41.0	7.7	10.7	20.1	30.5	2018	612,314	1,088,891	10.6 %	56.2 %	968,817	10.7 %	63.2 %
15	-121 -0.01%	Total:	1,942,913	51.3	48.7	2.4	7.2	37.6	44.0	2020	707,873	1,124,784	24.3 %	62.9 %	993,727	24.3 %	71.2 %
		VAP:	1,459,436	55.1	44.9	2.3	6.6	33.9	40.1	2018	530,079	1,080,695	23.7 %	49.0 %	949,966	23.8 %	55.8 %

For technical reasons, election results in Texas Legislative Council reports may vary slightly from the official election results. Complete official results for all elections are maintained by the Office of the Texas Secretary of State.
 SSVR = Spanish surname voter registration

Incumbents by District

SBOE DISTRICTS - PLANE2106

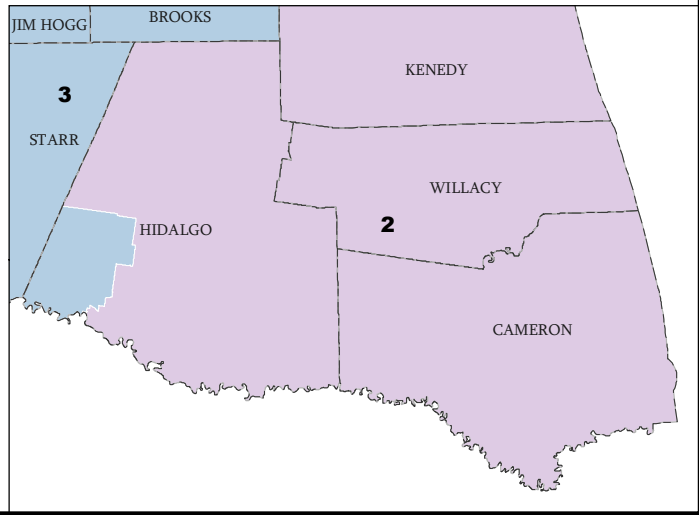
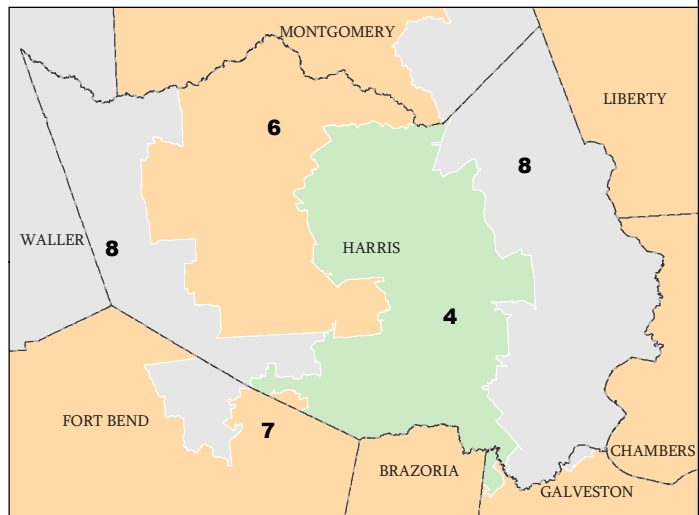
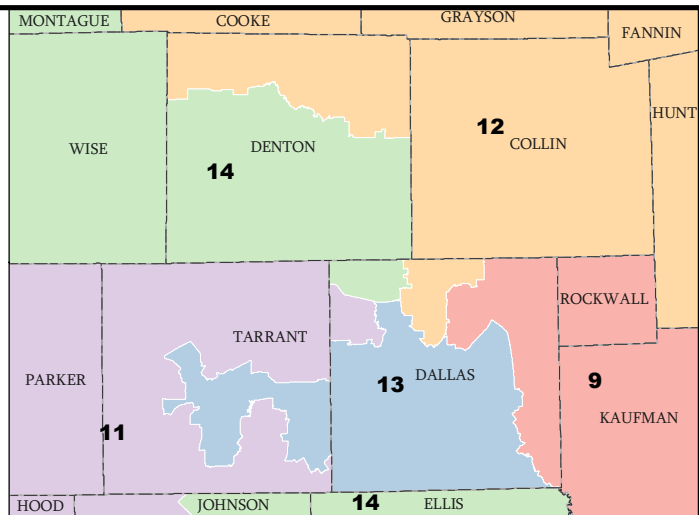
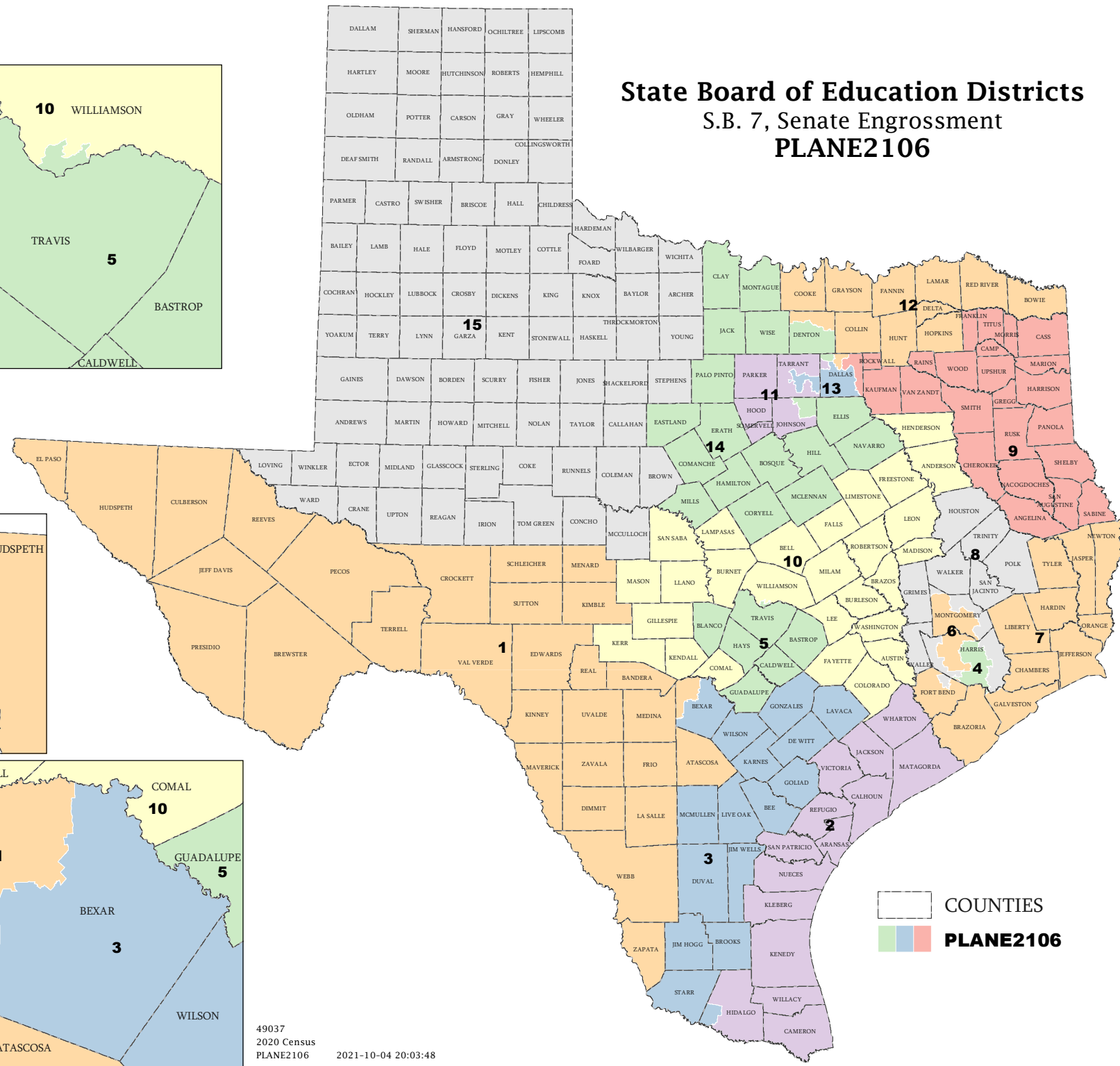
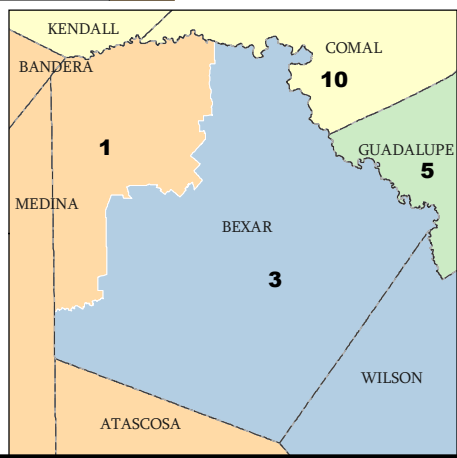
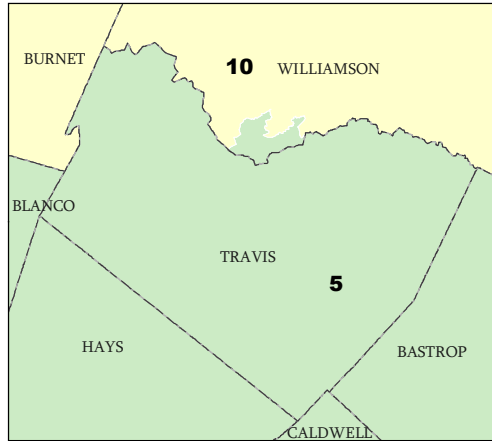
District	Incumbents
1	Pérez - D
2	Cortez, Jr. - D
3	Pérez-Díaz - D
4	*Allen, Jr. - D *Robinson - R
5	Bell-Metereau - D
6	Hickman - R
7	N/A
8	Young - R
9	Ellis - R
10	Maynard - R
11	Hardy - R
12	Little - R
13	Davis - D
14	Melton-Malone - R
15	Johnson - R

* Incumbents paired.

State Board of Education Districts

S.B. 7, Senate Enrossment

PLANE2106

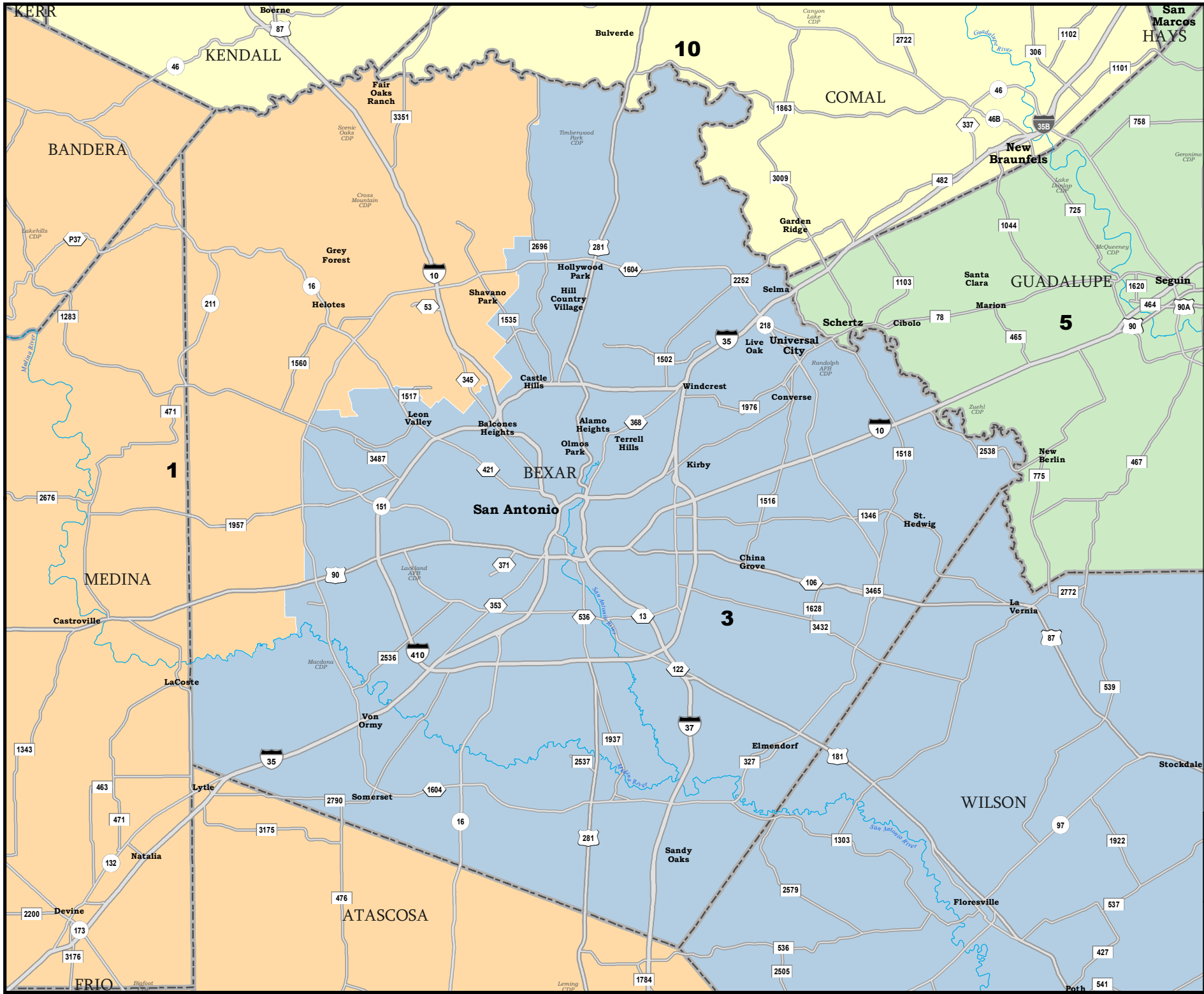


COUNTRIES
 PLANE2106

Map ID 5900
10/05/21 10:30:36



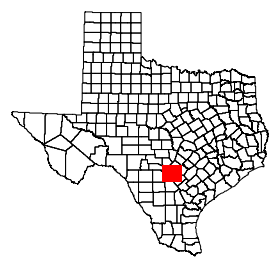
49037
2020 Census
PLANE2106 2021-10-04 20:03:48

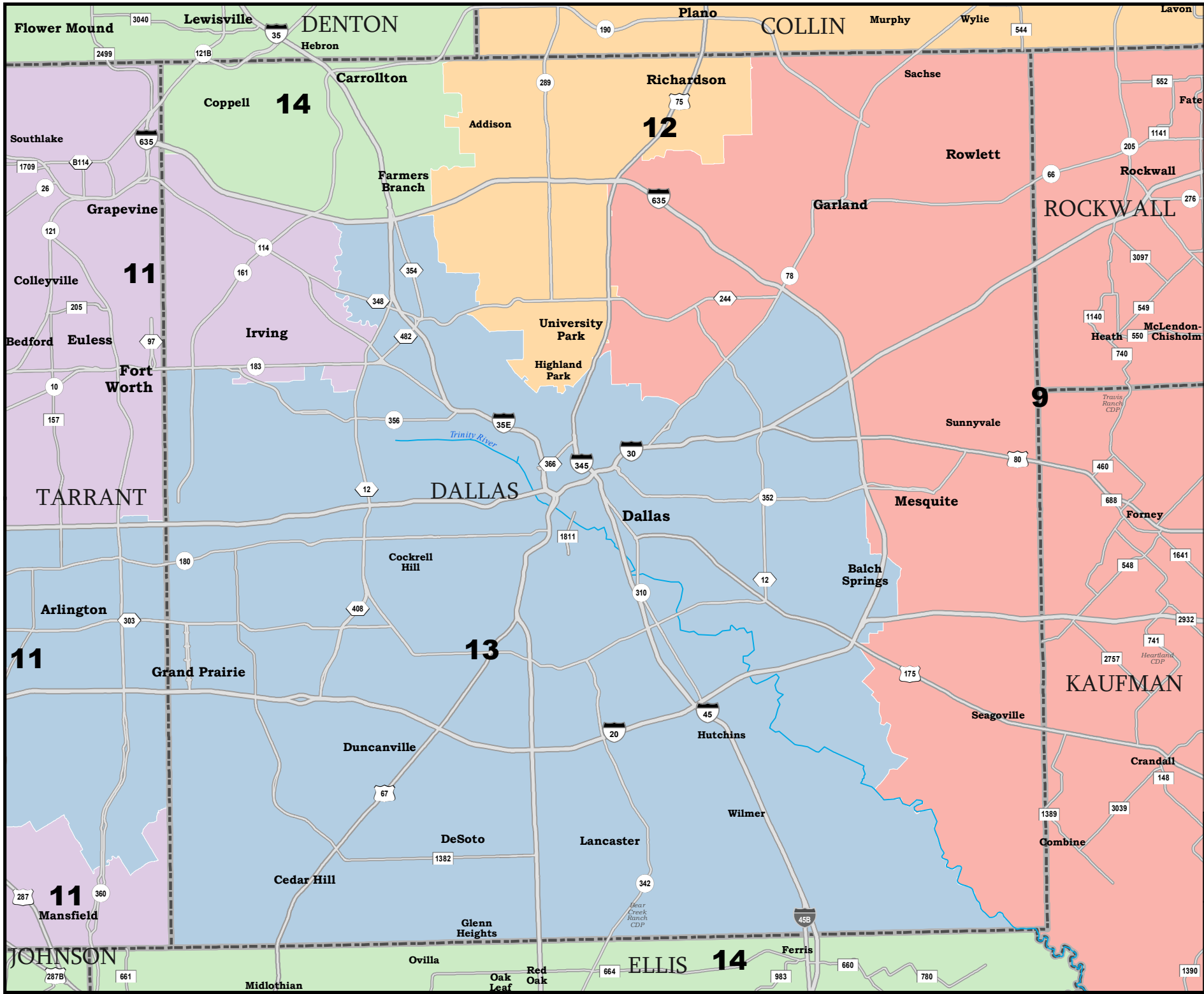


BEXAR COUNTY

State Board of Education Districts S.B. 7, Senate Enrossment PLANE2106

 COUNTIES
 **PLANE2106**

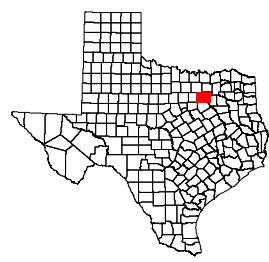


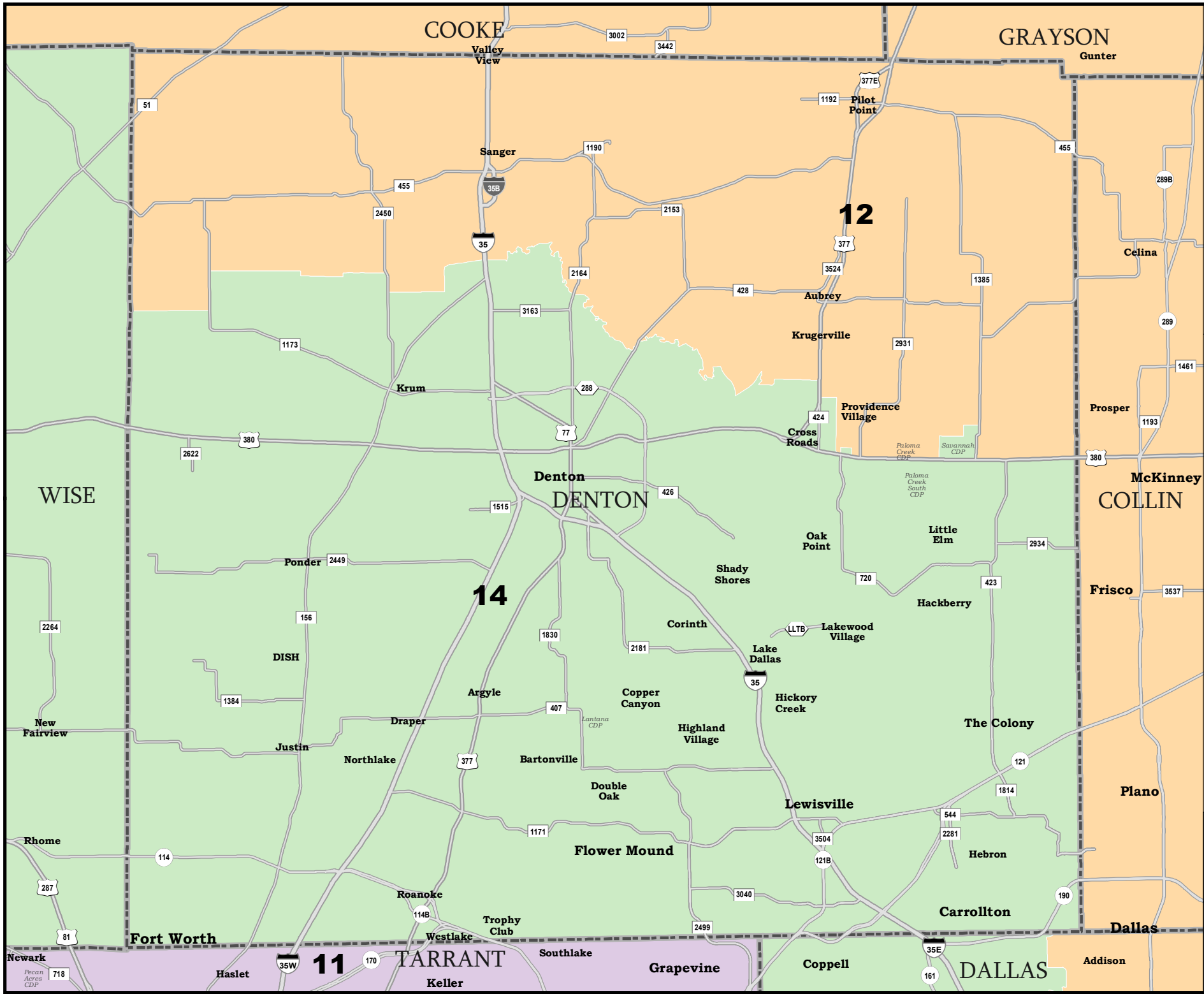


DALLAS COUNTY

State Board of Education Districts
S.B. 7, Senate Engrossment
PLANE2106

 COUNTIES
 **PLANE2106**

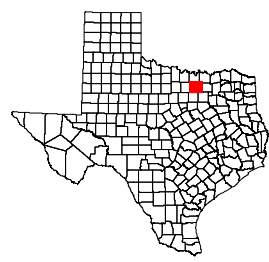





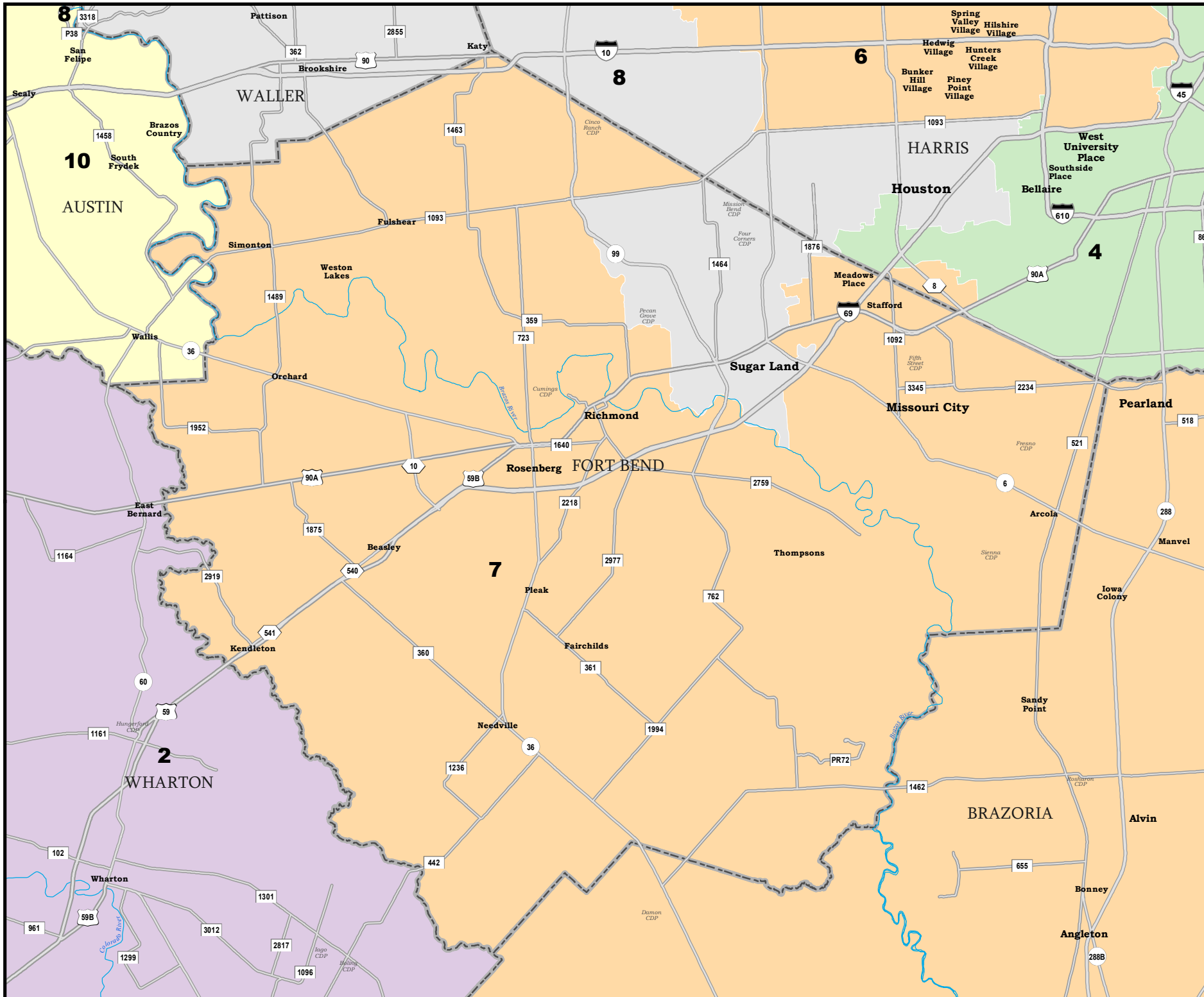
DENTON COUNTY

State Board of Education Districts
 S.B. 7, Senate Enrossment
PLANE2106

 COUNTIES
 **PLANE2106**



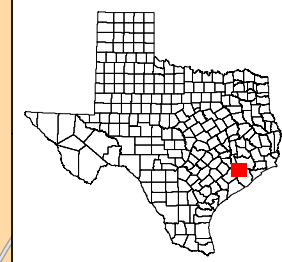
Map ID 5900
 10/05/21 10:30:36
 49037
 2020 Census
 PLANE2106 2021-10-04 20:03:48


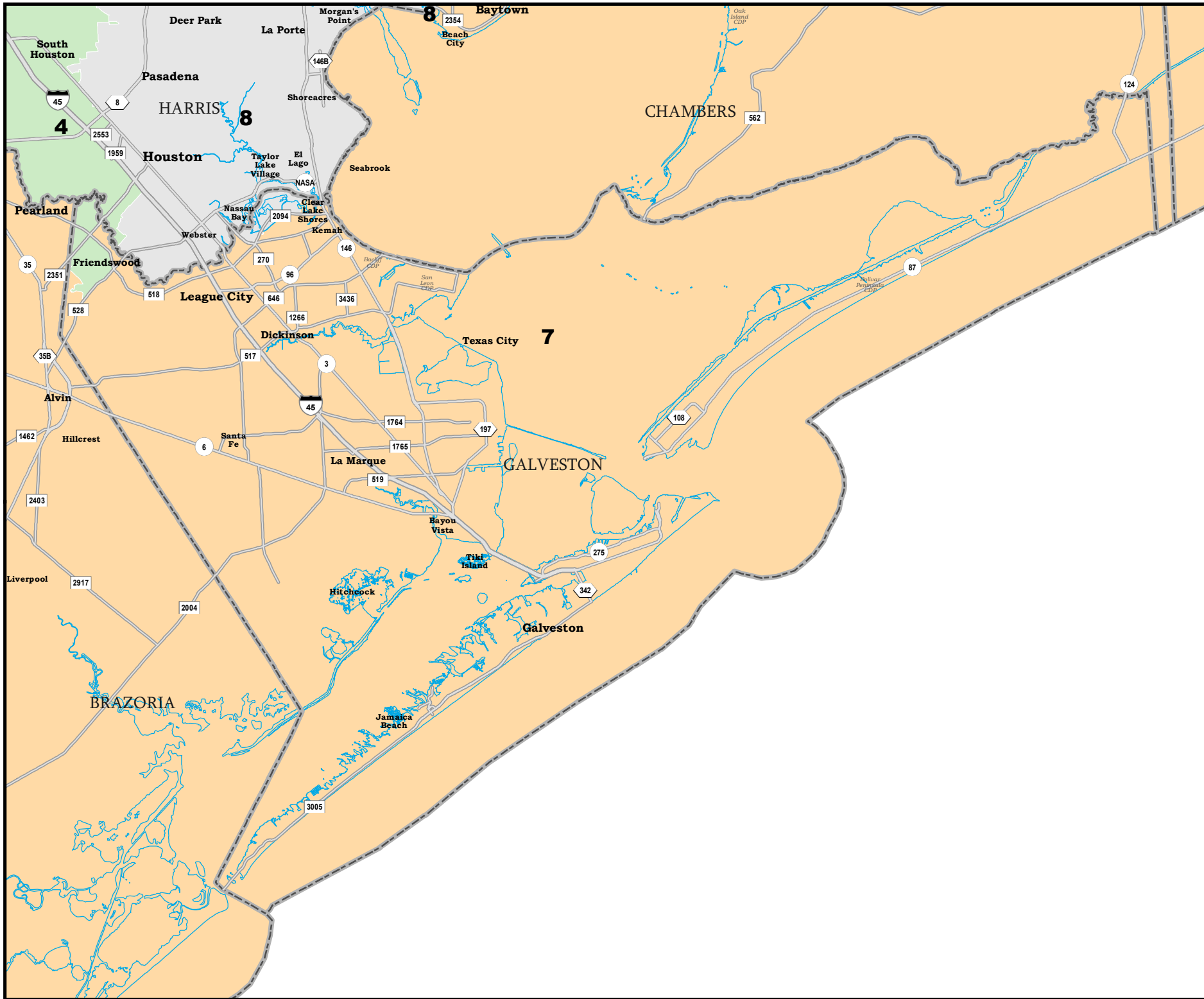


FORT BEND COUNTY

State Board of Education Districts
 S.B. 7, Senate Engrssment
PLANE2106

 COUNTIES
 **PLANE2106**



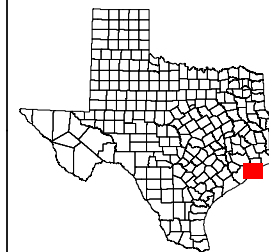


GALVESTON COUNTY

State Board of Education Districts
 S.B. 7, Senate Enrossment
PLANE2106

 COUNTIES

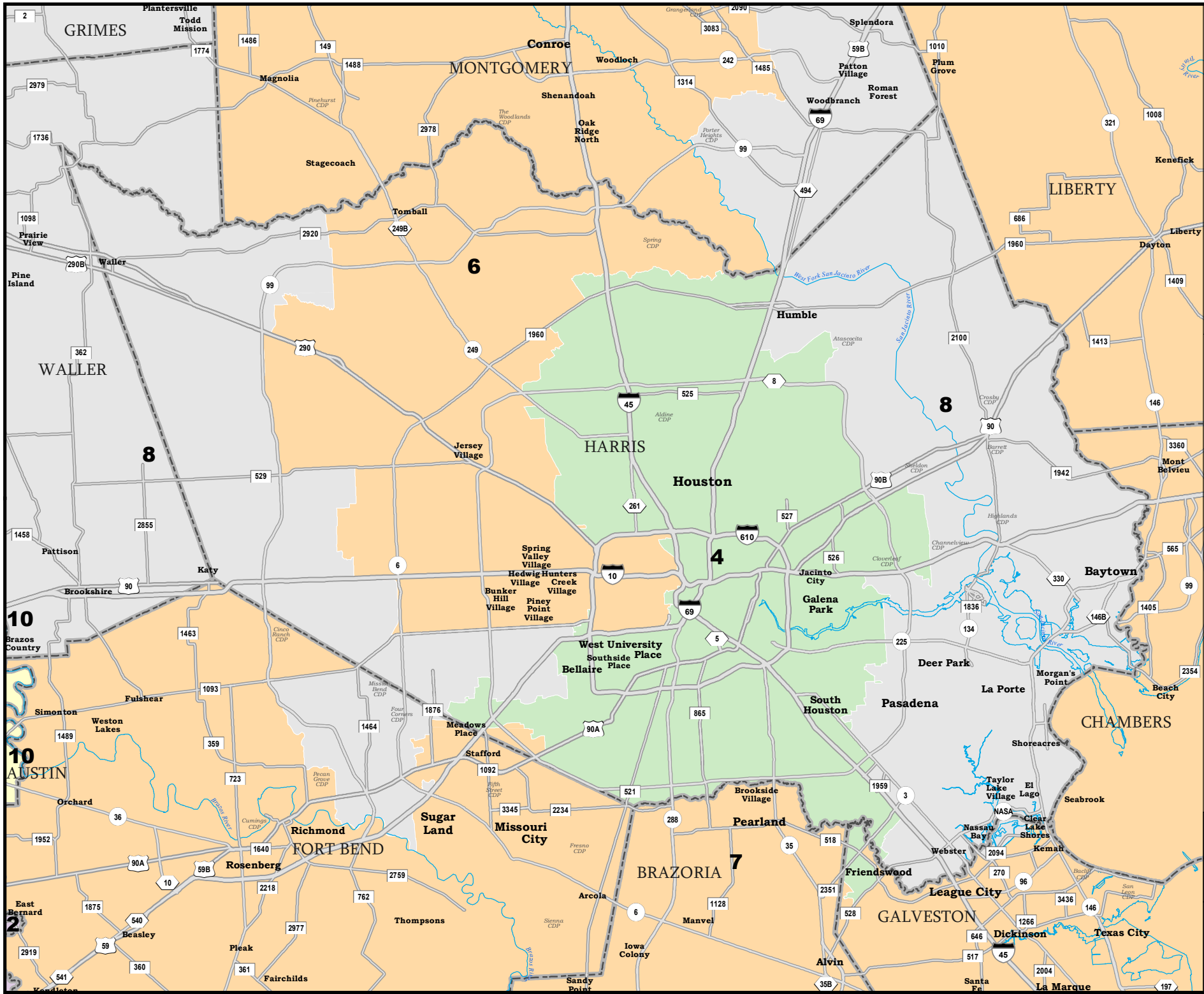
 **PLANE2106**



49037
 2020 Census
 PLANE2106 2021-10-04 20:03:48

Map ID 5900
 10/05/21 10:30:36

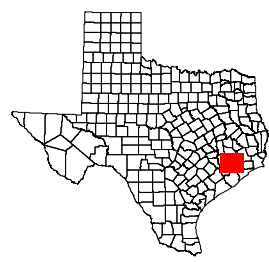


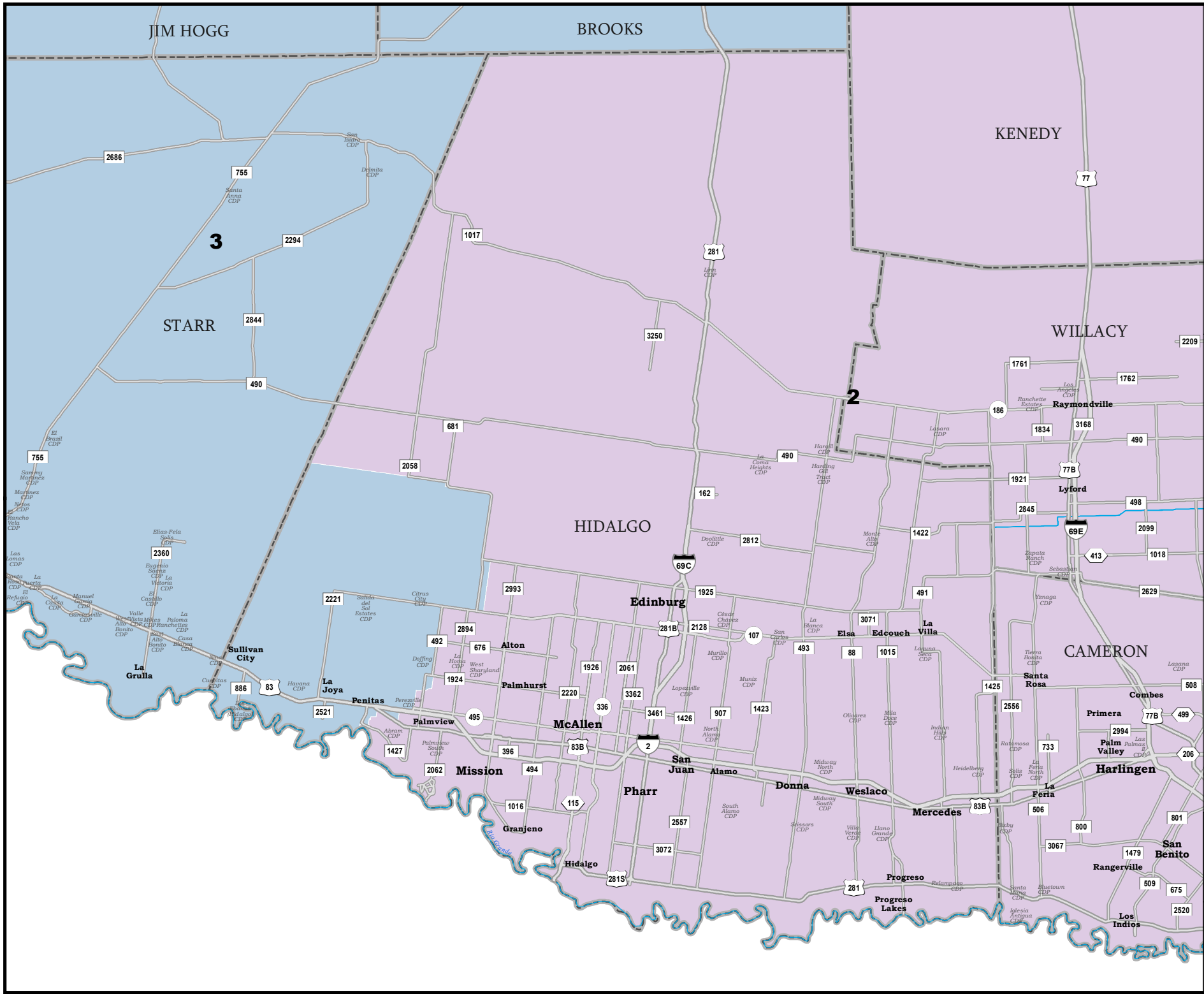


HARRIS COUNTY

State Board of Education Districts
S.B. 7, Senate Enrossment
PLANE2106

 COUNTIES
 **PLANE2106**

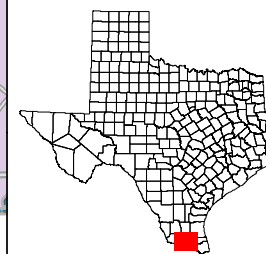




HIDALGO COUNTY

State Board of Education Districts
S.B. 7, Senate Enrollments
PLANE2106

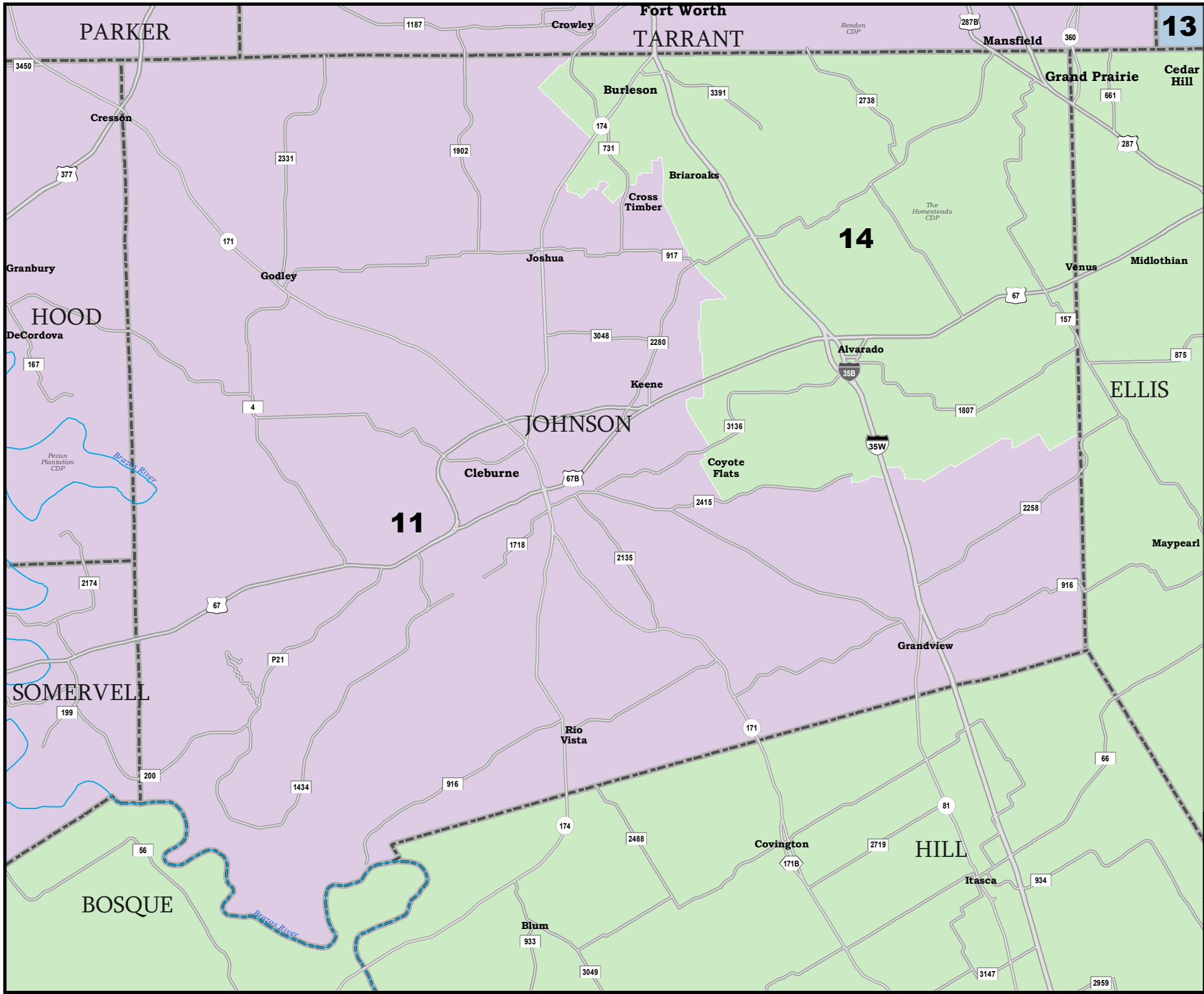
 COUNTIES
 **PLANE2106**



Map ID 5900
10/05/21 10:30:36

49037
2020 Census
PLANE2106 2021-10-04 20:03:48

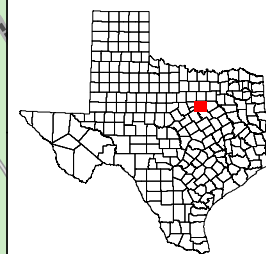


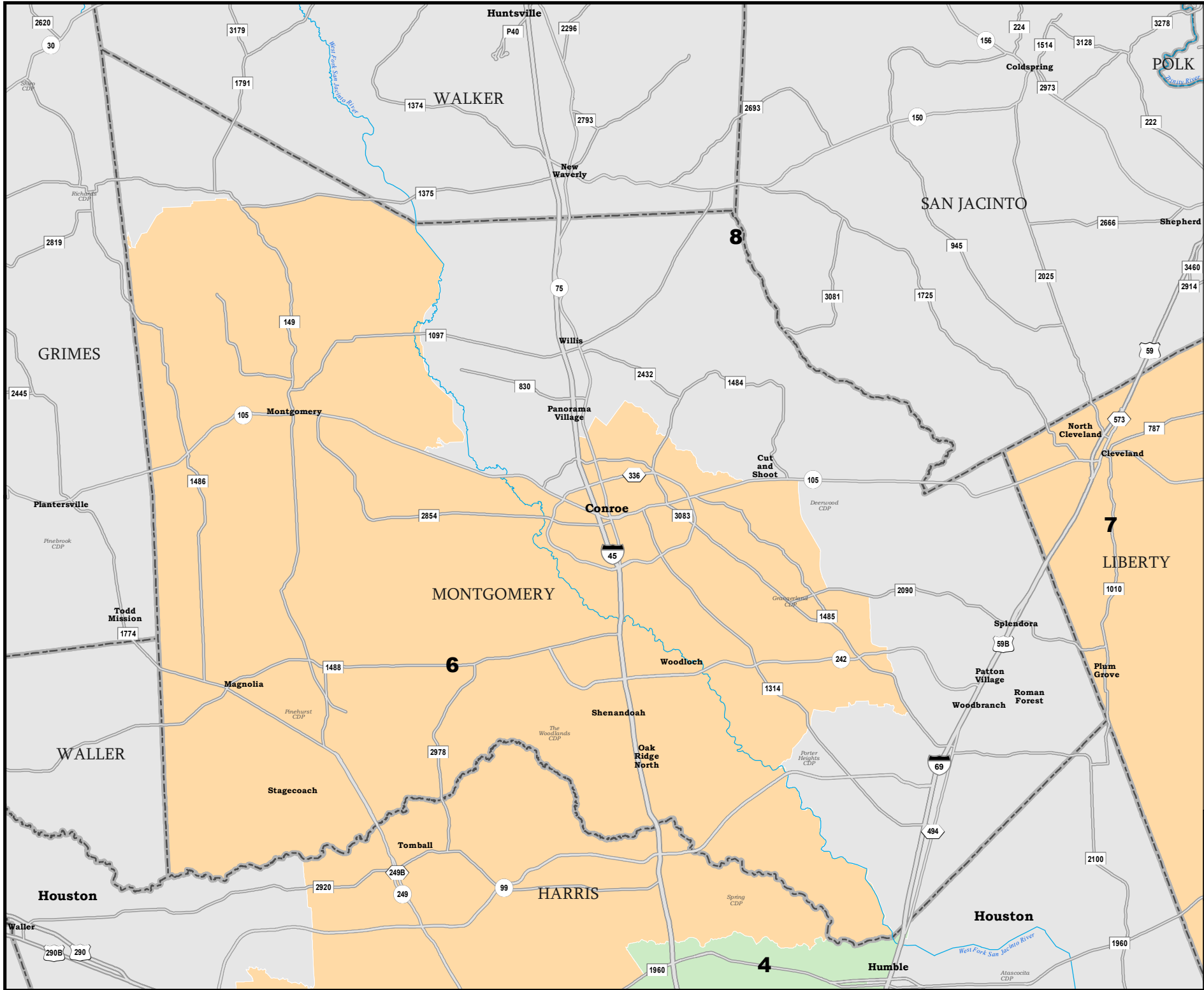


JOHNSON COUNTY

State Board of Education Districts
S.B. 7, Senate Engrossment
PLANE2106

 COUNTIES
 **PLANE2106**



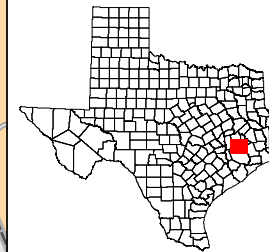


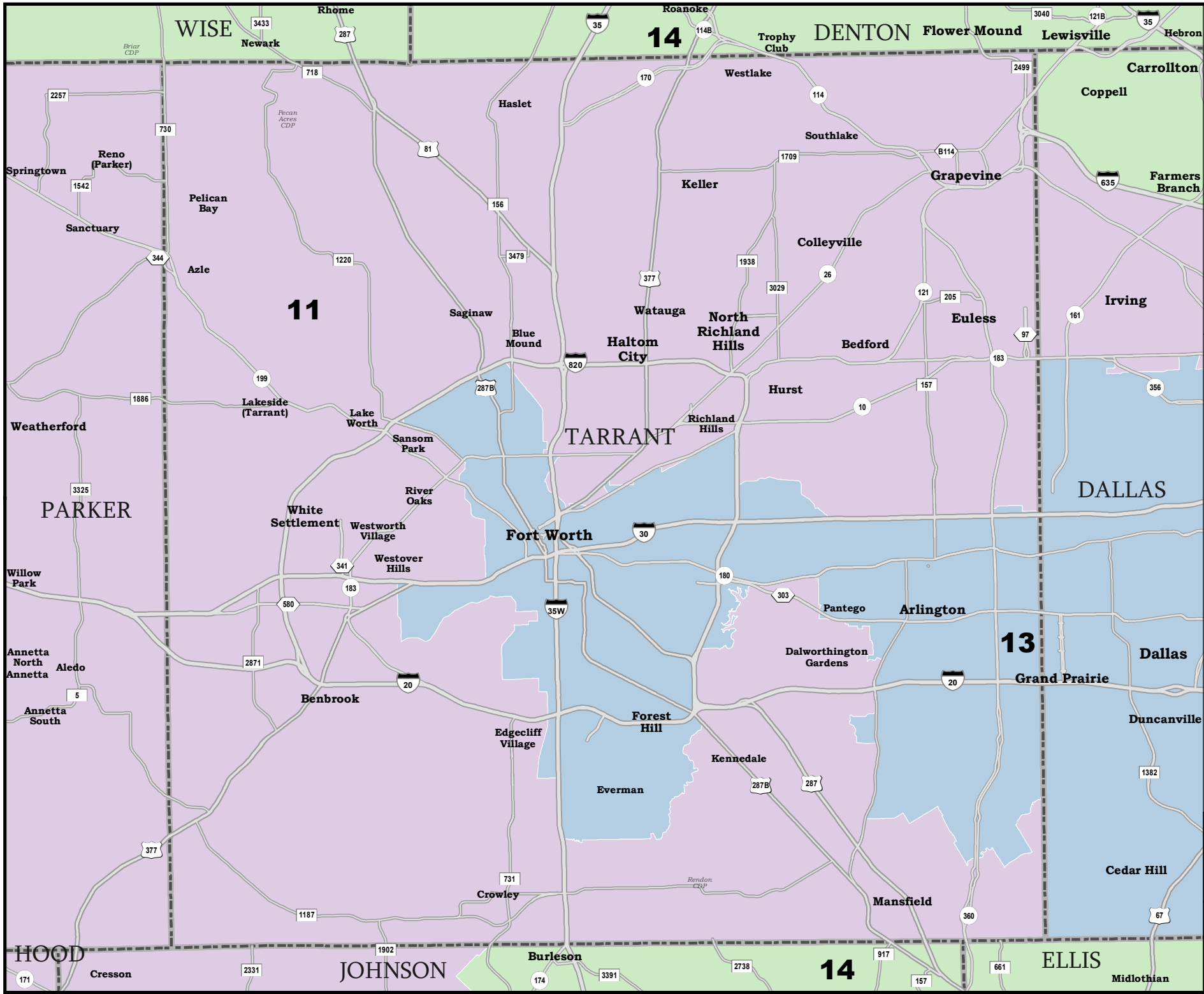
MONTGOMERY COUNTY

State Board of Education Districts
 S.B. 7, Senate Enrossment
PLANE2106

 COUNTIES

 **PLANE2106**

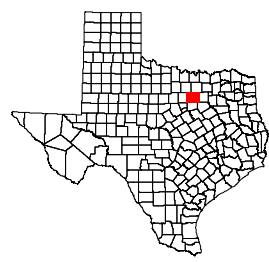


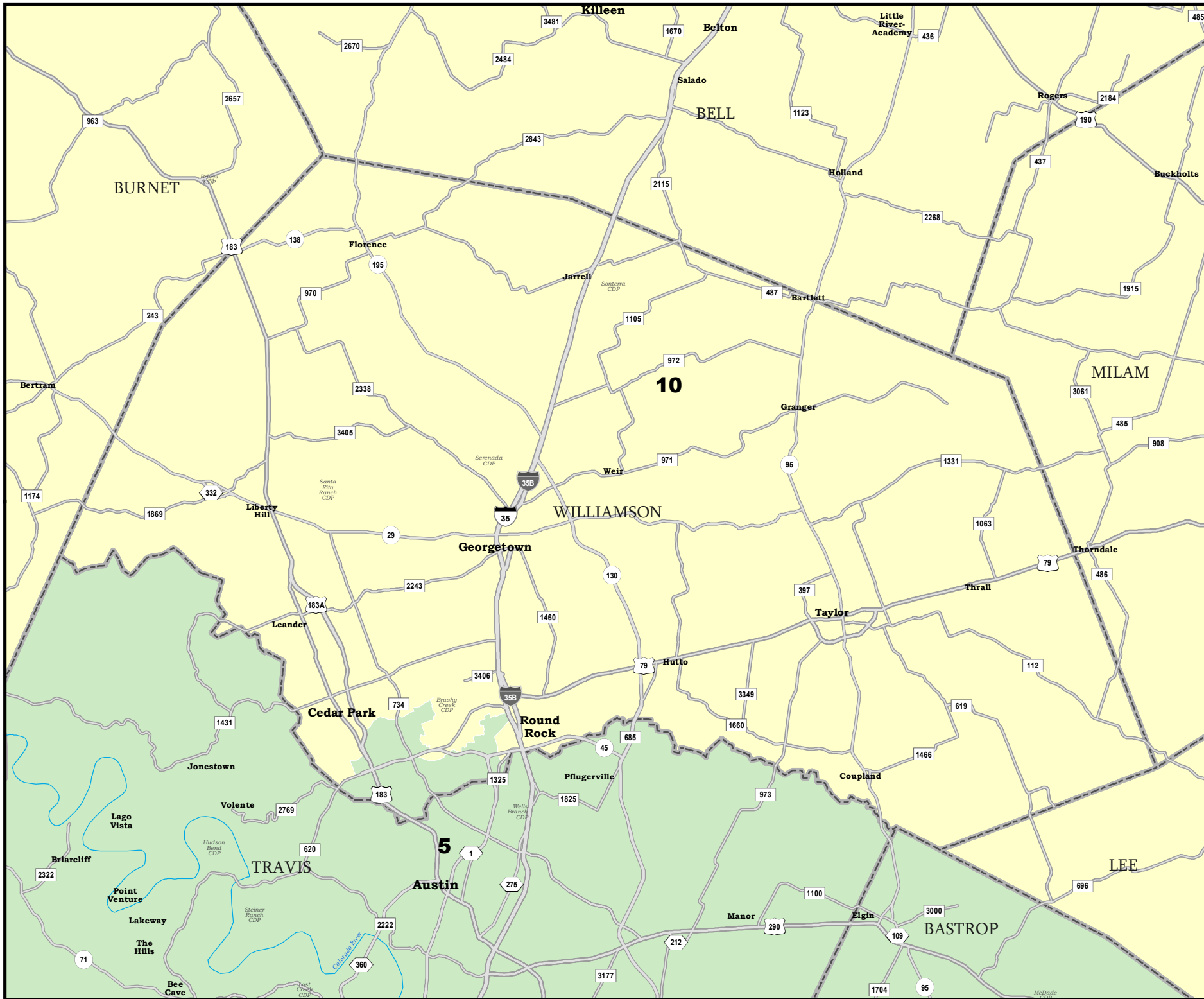


TARRANT COUNTY

State Board of Education Districts
 S.B. 7, Senate Engrossment
PLANE2106

 COUNTIES
 **PLANE2106**





WILLIAMSON COUNTY

State Board of Education Districts
 S.B. 7, Senate Enrossment
PLANE2106

 COUNTIES
 **PLANE2106**

