

Population Change and Redistricting in Texas

Texas House Redistricting Committee
September 8, 2021





Redistricting Dates

- Apportionment File sent to POTUS on April 26, 2021
- Redistricting Data File (Public Law 94-171 File) received by the Governor September 12, 2021
- PL 94-171 File to includes:
 - Race, Hispanic origin, 18 and older, occupancy status, and group quarters by type.
- Data available at WWW.CENSUS.GOV/RDO



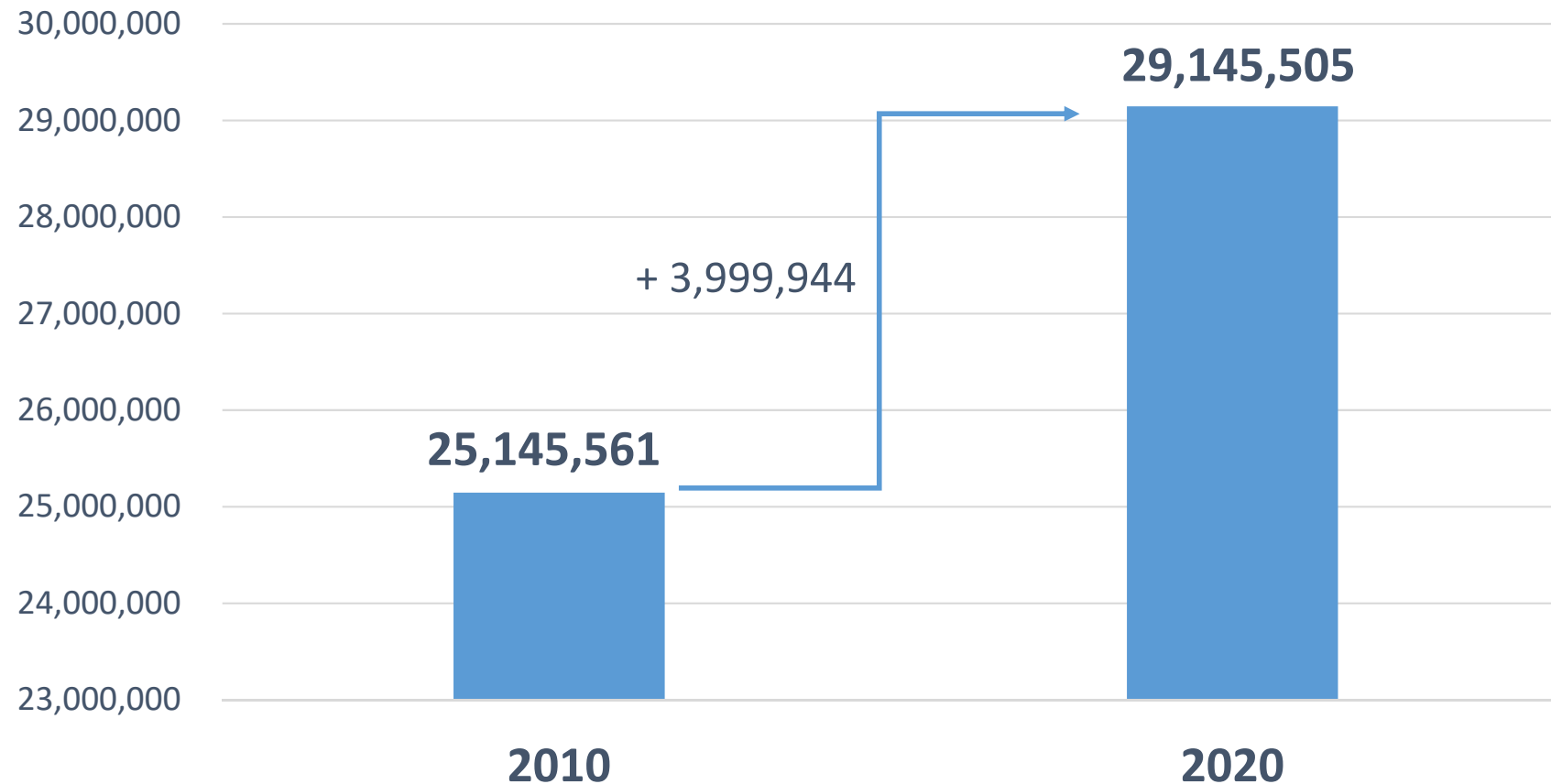
Population Growth and Congressional Seat Change

	2010 Population	2020 Population	Numeric Change 2010-2020	Percent Change 2010-2020	Congressional Seat Change
United States	308,745,538	331,449,281	22,703,743	7.4%	
Texas	25,145,561	29,145,505	3,999,944	15.90%	2
Florida	18,801,310	21,538,187	2,736,877	14.60%	1
North Carolina	9,535,483	10,439,388	903,905	9.50%	1
Colorado	5,029,196	5,773,714	744,518	14.80%	1
Oregon	3,831,074	4,237,256	406,182	10.60%	1
Montana	989,415	1,084,225	94,810	9.60%	1
California	37,253,956	39,538,223	2,284,267	6.10%	-1
New York	19,378,102	20,201,249	823,147	4.20%	-1
Pennsylvania	12,702,379	13,002,700	300,321	2.40%	-1
Ohio	11,536,504	11,799,448	262,944	2.30%	-1
Michigan	9,883,640	10,077,331	193,691	2.00%	-1
Illinois	12,830,632	12,812,508	-18,124	-0.10%	-1
West Virginia	1,852,994	1,793,716	-59,278	-3.20%	-1



Ideal Size of Texas Senate, House, and U.S. Congressional Districts

Texas Senate District Size (31 seats) = 940,178 (811,147 in 2010)
Texas House District Size (150 seats) = 194,303 (167,637 in 2010)
U.S. House Seat District Size (38 seats) = 766,987 (698,488 in 2010 – 36 seats)



Source: Census Bureau 2010 and 2020 Census Counts

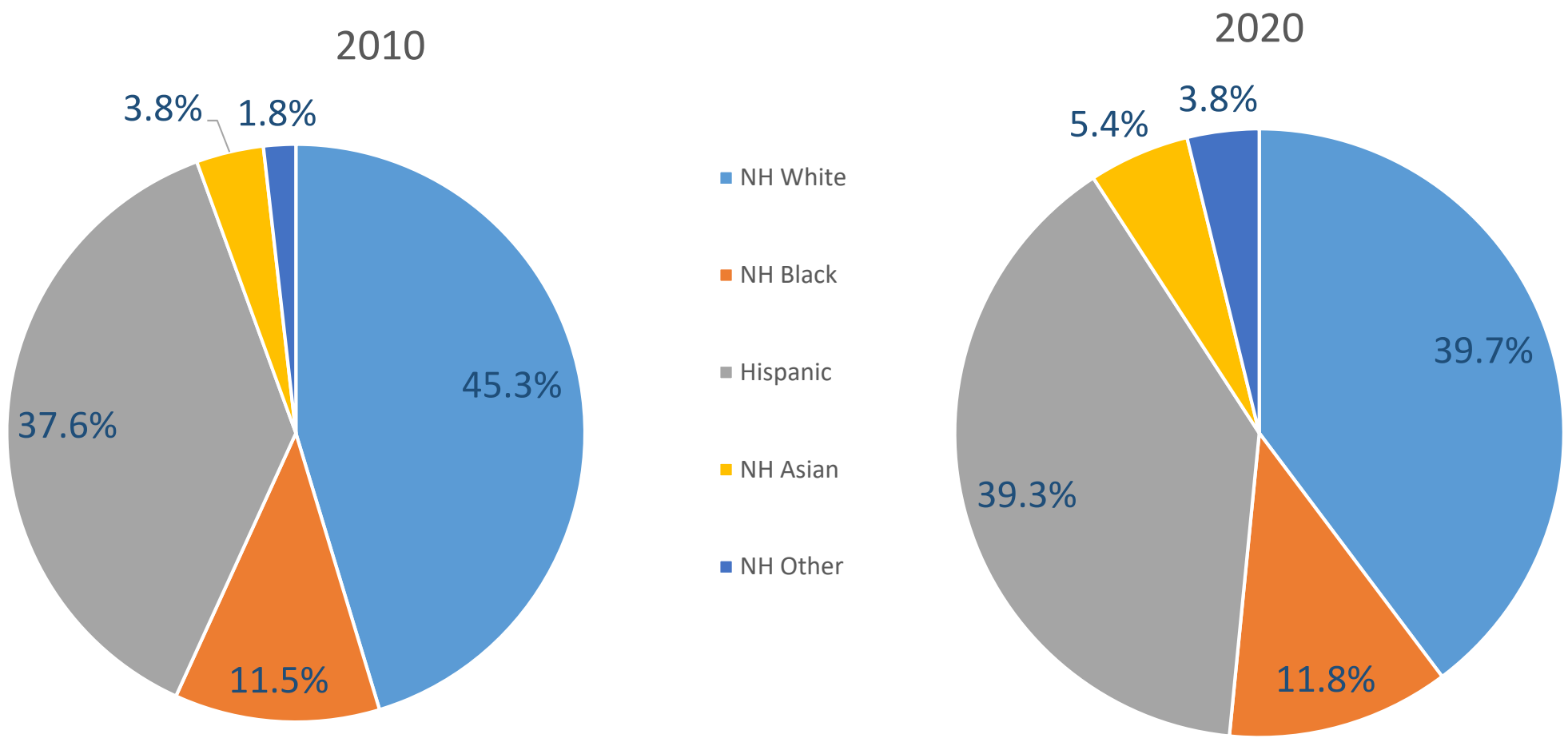


Population and population change for the total and race/ethnic groups, Texas, 2010-2020

Population	Total	NH White	NH Black	Hispanic	NH Asian	NH Other
2010	25,145,561	11,397,345	2,886,825	9,460,921	948,426	452,044
2020	29,145,505	11,584,597	3,444,712	11,441,717	1,561,518	1,112,961
Numeric Change	3,999,944	187,252	557,887	1,980,796	613,092	660,917
Percent Change of Group	15.9%	1.6%	19.3%	20.9%	64.6%	146.2%
Percent Contribution to Total Change 10-20		4.7%	13.9%	49.5%	15.3%	16.5%
Percent of the Total Population 2020	100%	39.7%	11.8%	39.3%	5.4%	3.8%

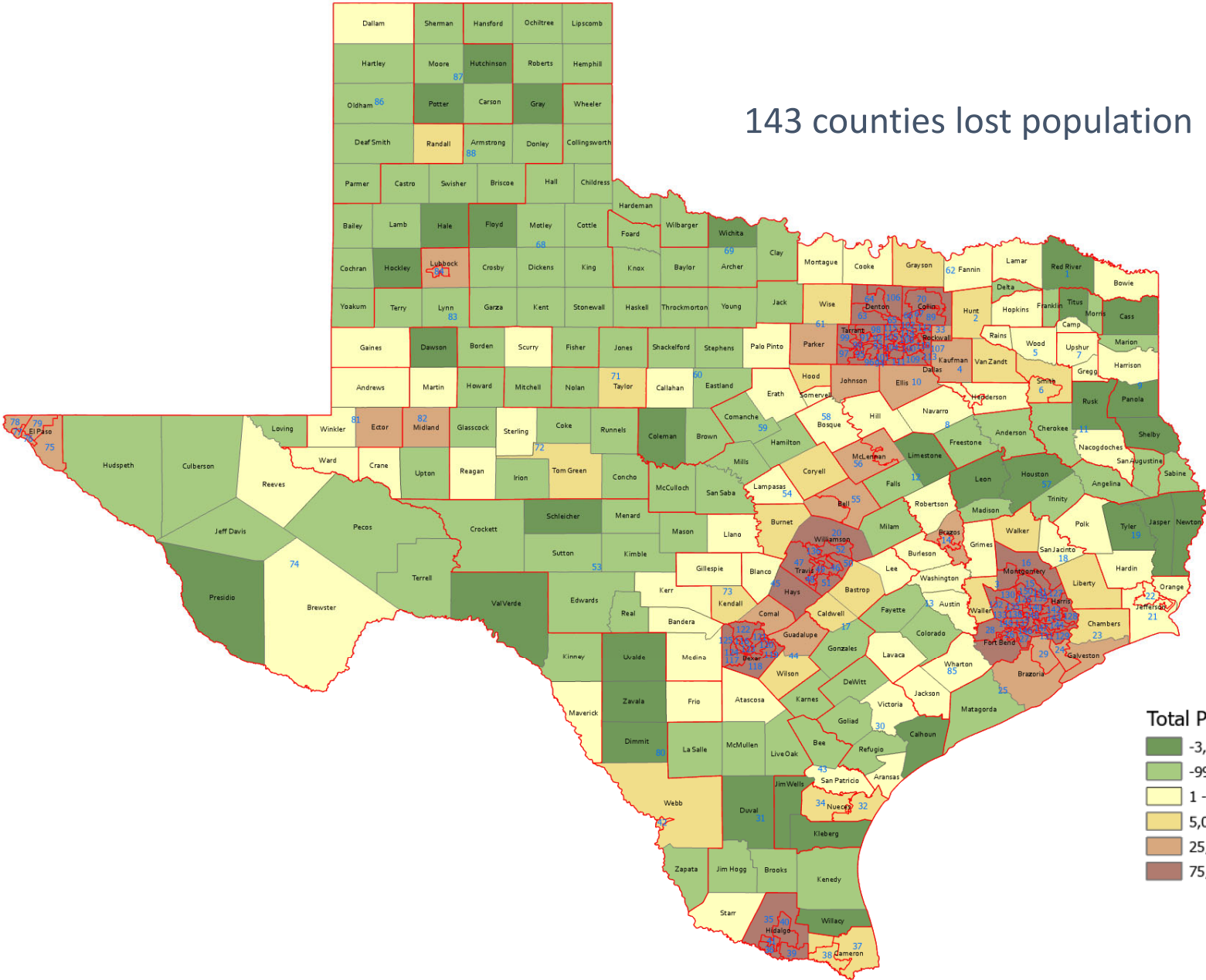


Percent distribution of race/ethnic groups in Texas, 2010 and 2020



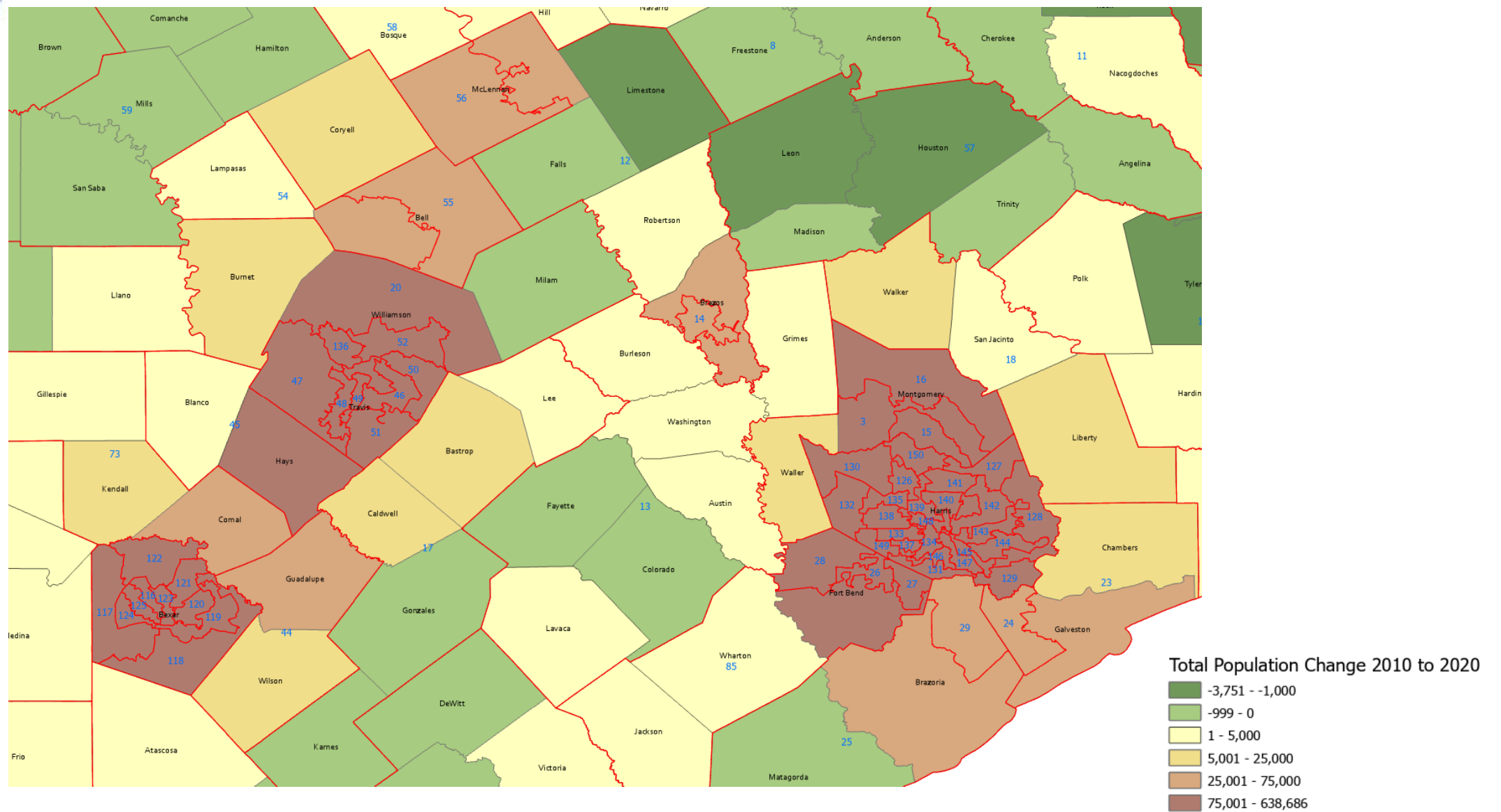


Numeric Change, Texas Counties, 2010-2020



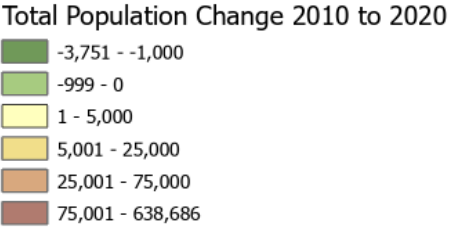
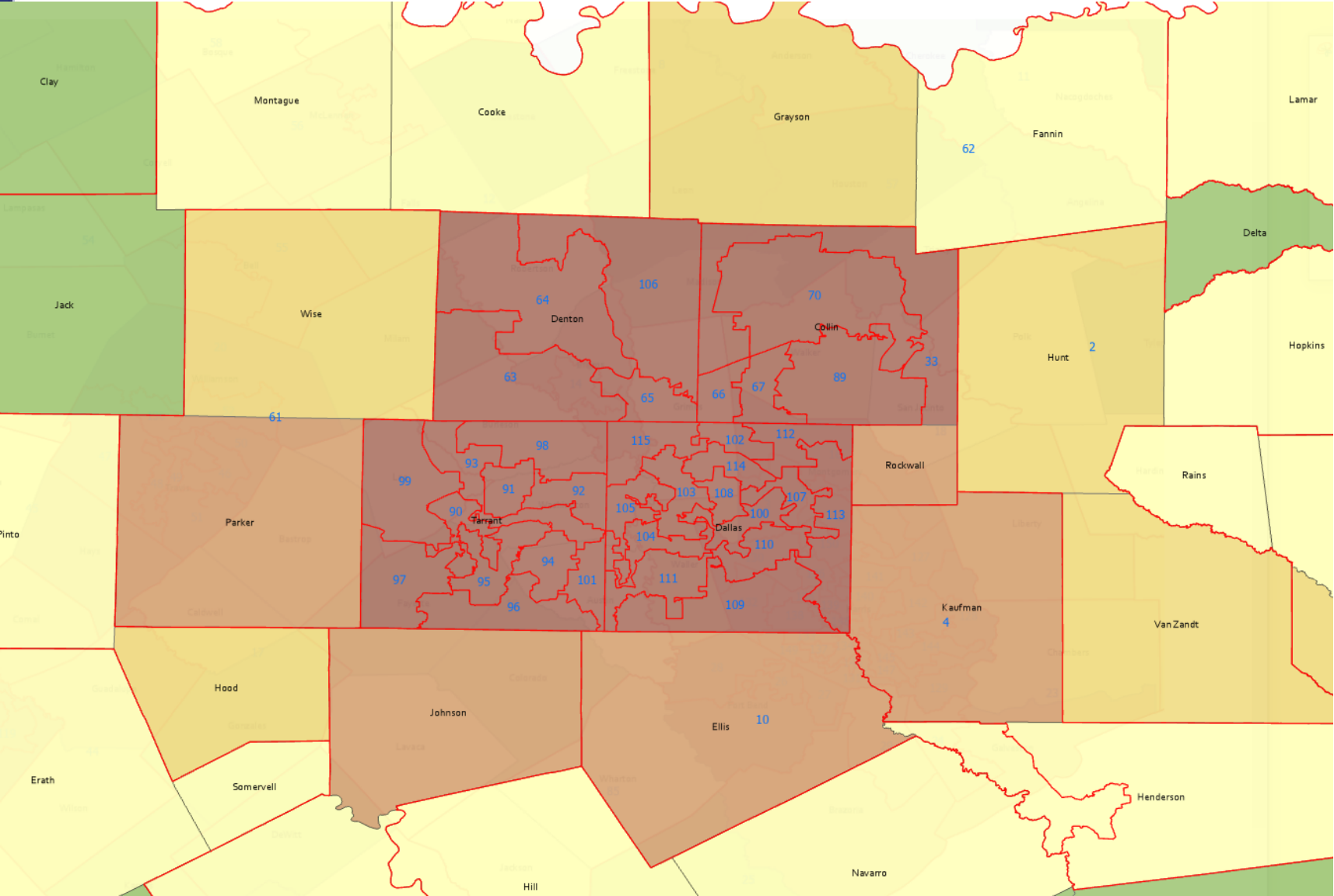


Numeric Change, Texas Counties, San Antonio, Austin, Houston, 2010-2020





Numeric Change, Texas Counties, DFW Area 2010-2020



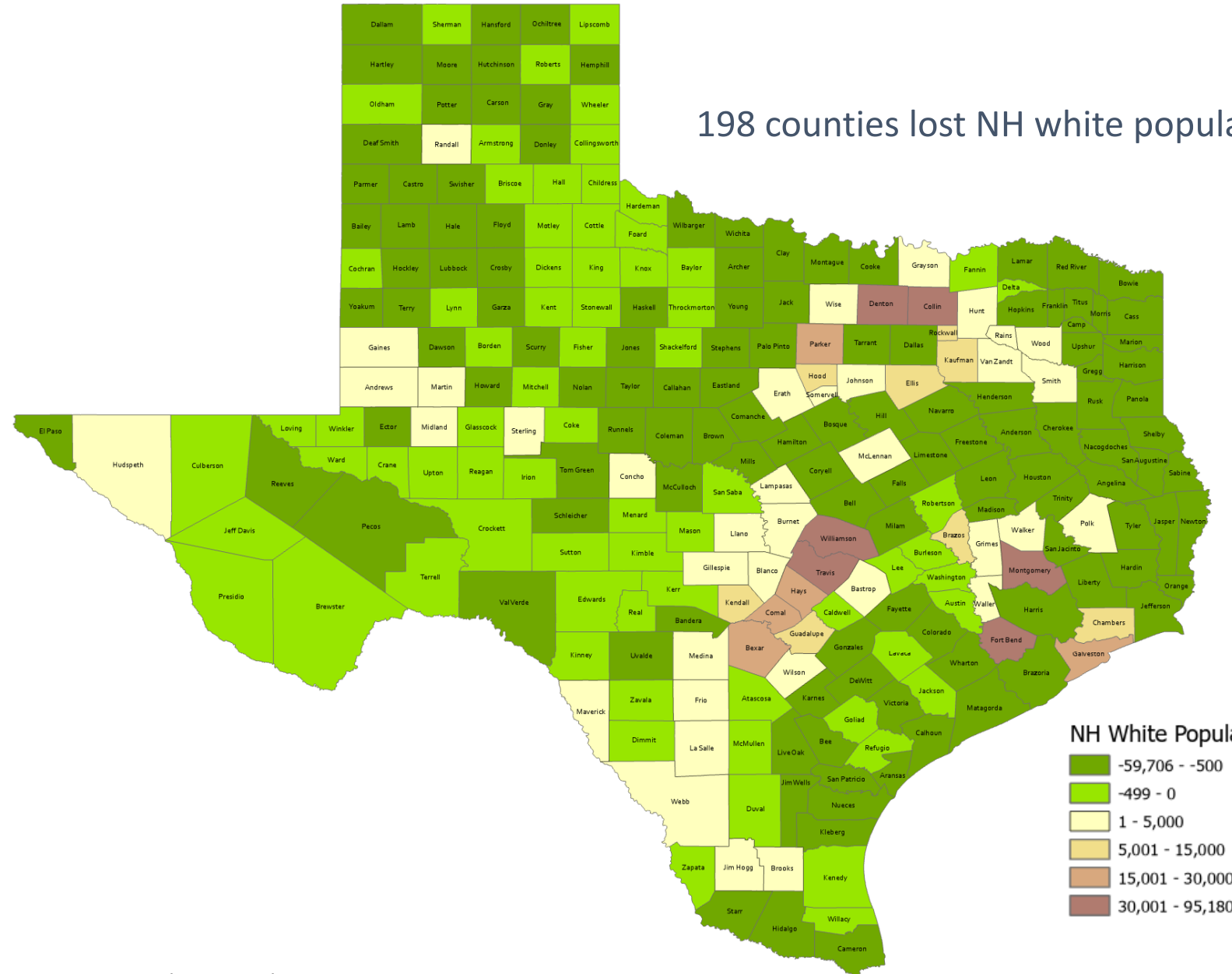


Number and percent of Texas counties that had population declines for total and for race/ethnic groups between 2010 and 2020

Total	NH White	NH Black	Hispanic	NH Asian	NH Other
143	198	158	63	49	-
56%	78%	62%	25%	19%	0%

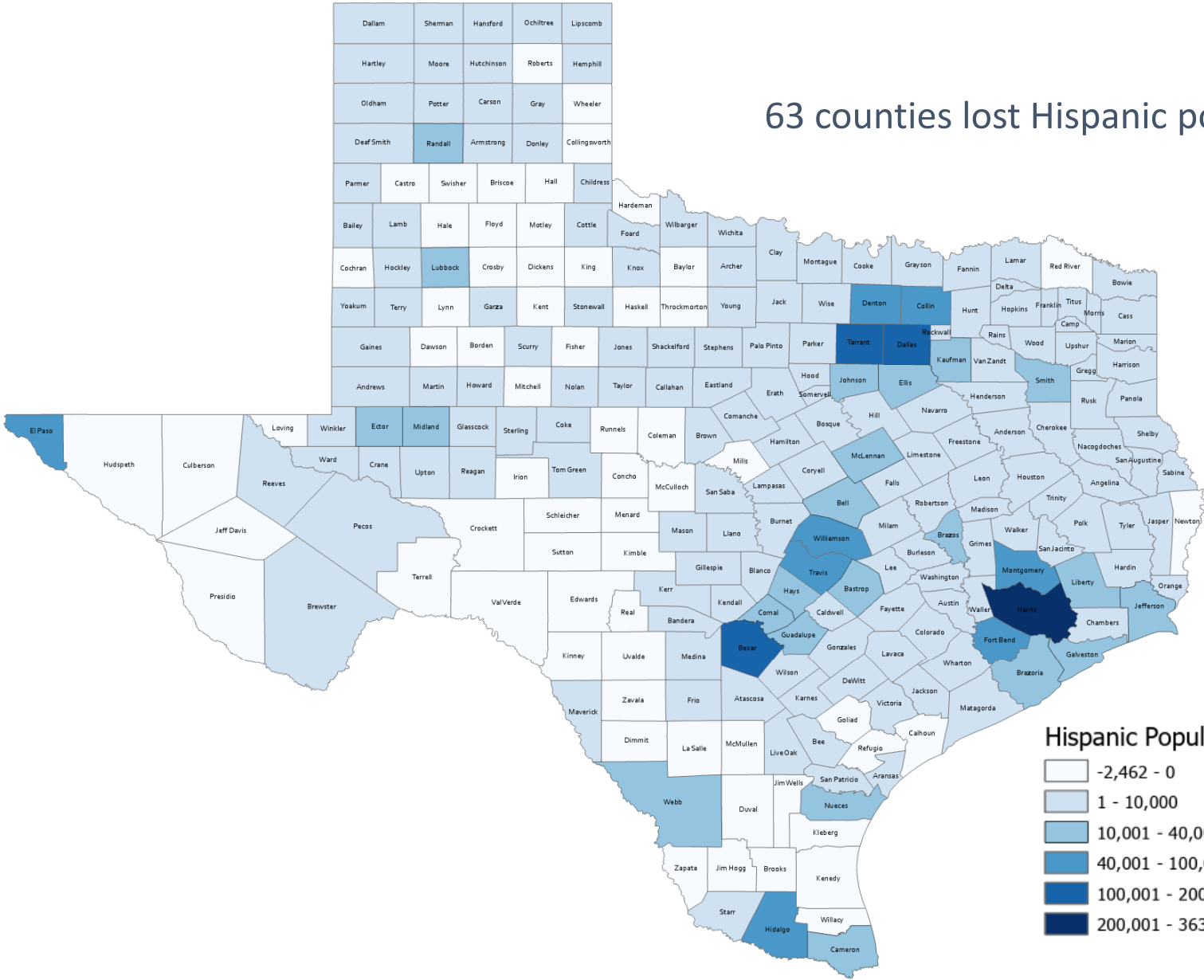


Numeric Change, Texas Counties, Non-Hispanic White, 2010-2020



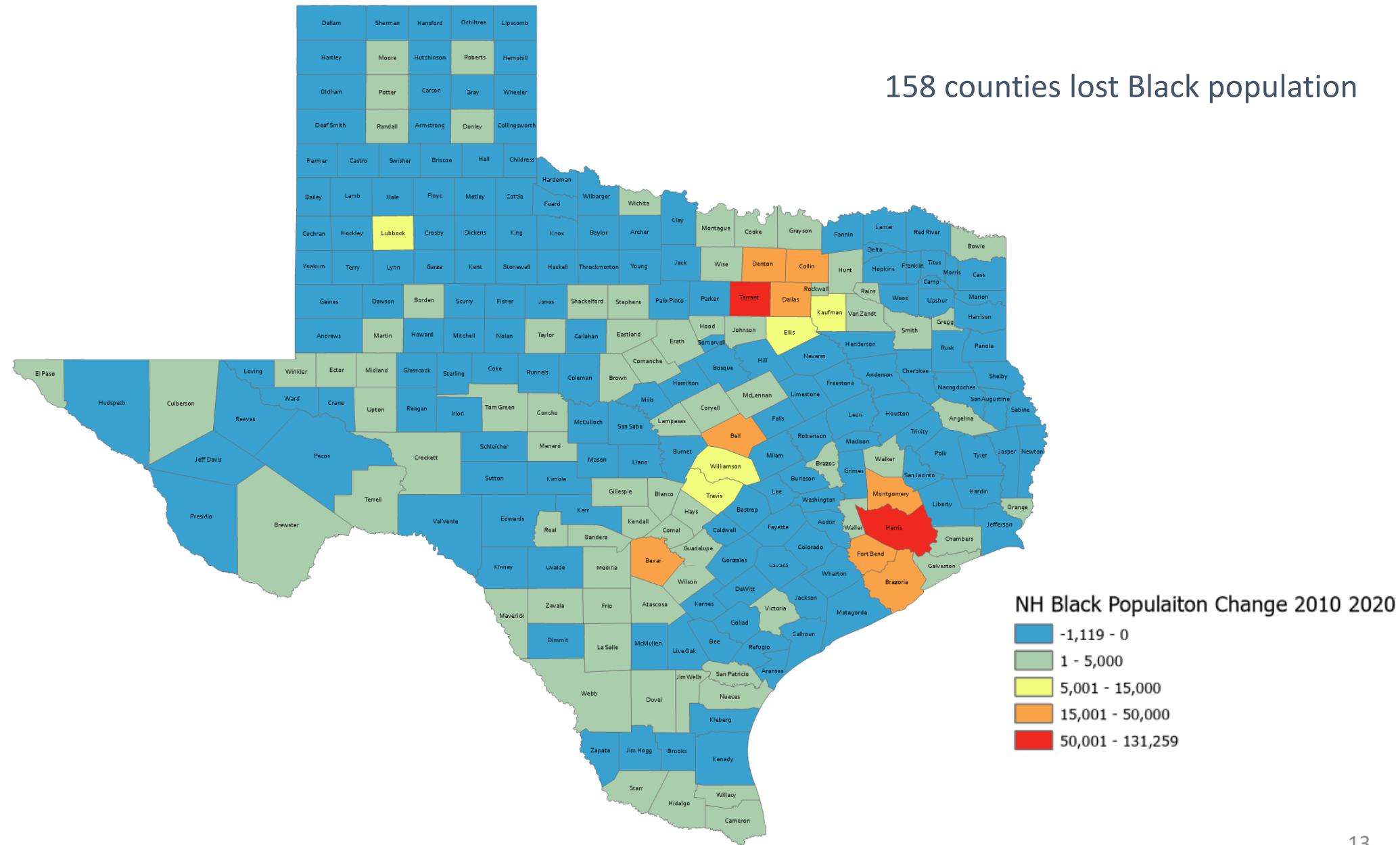


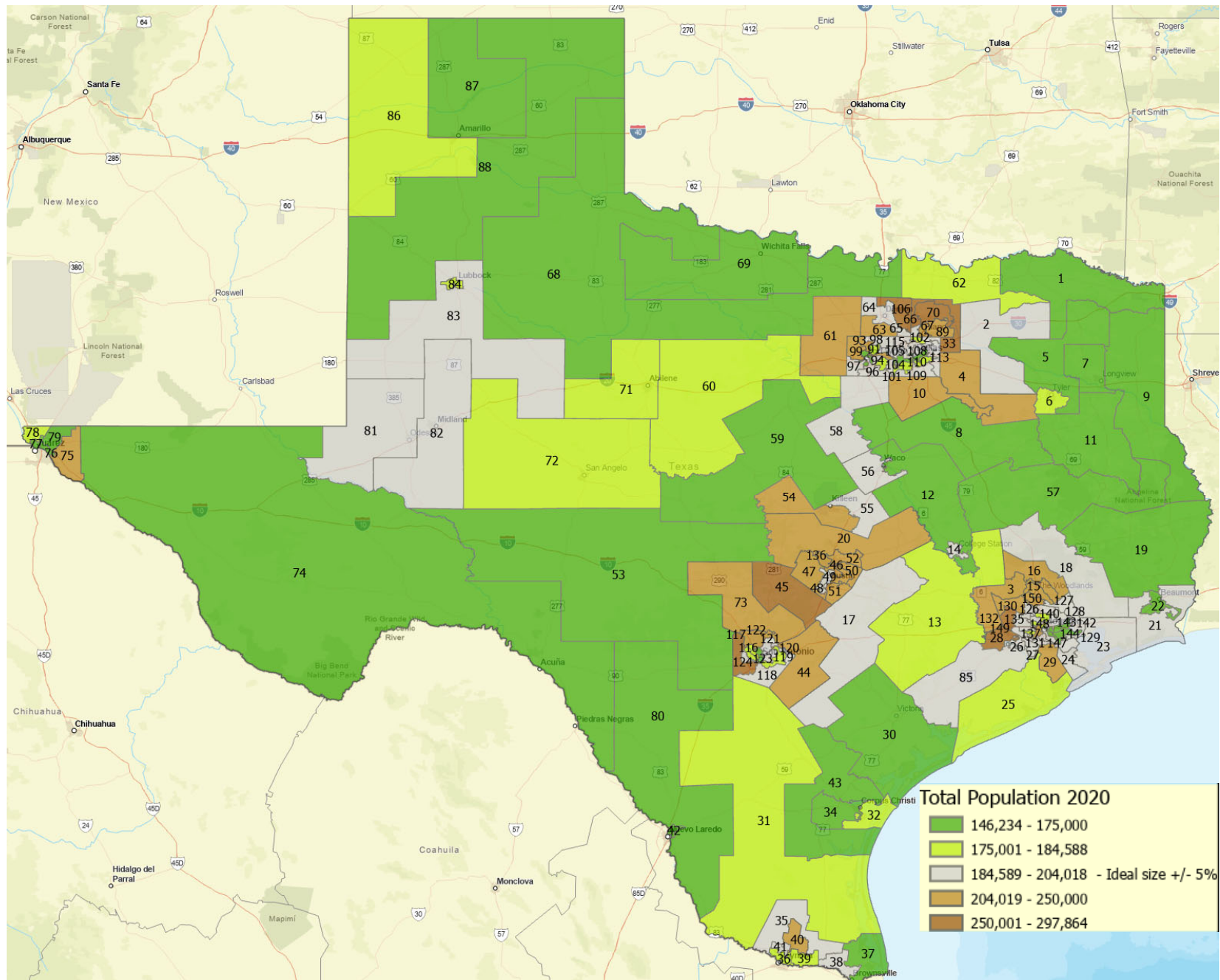
Numeric Change, Texas Counties, Hispanic, 2010-2020





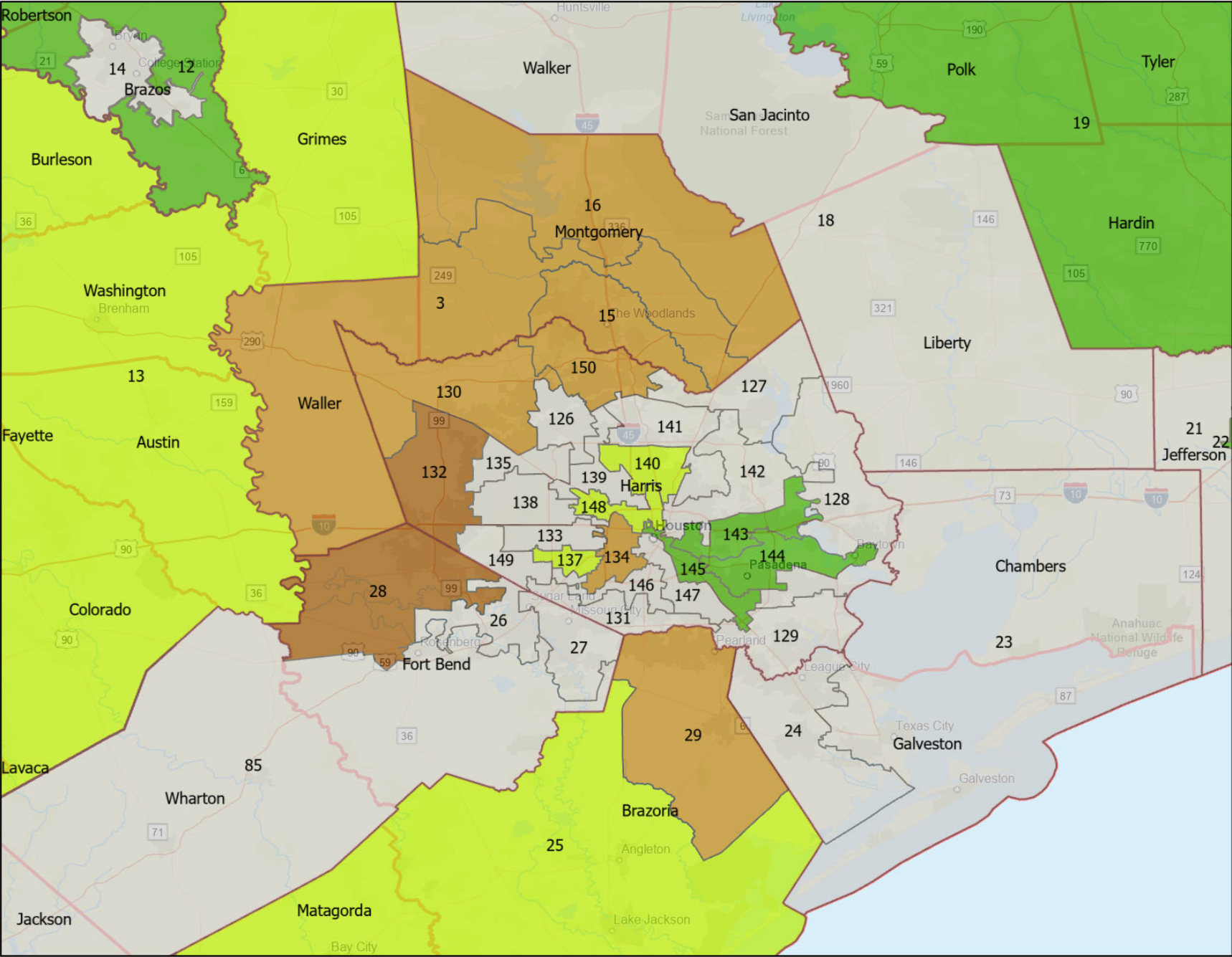
Numeric Change, Texas Counties, Non-Hispanic Black, 2010-2020







2020 Census Population for Current Texas House Districts, Houston Area



Total Population 2020

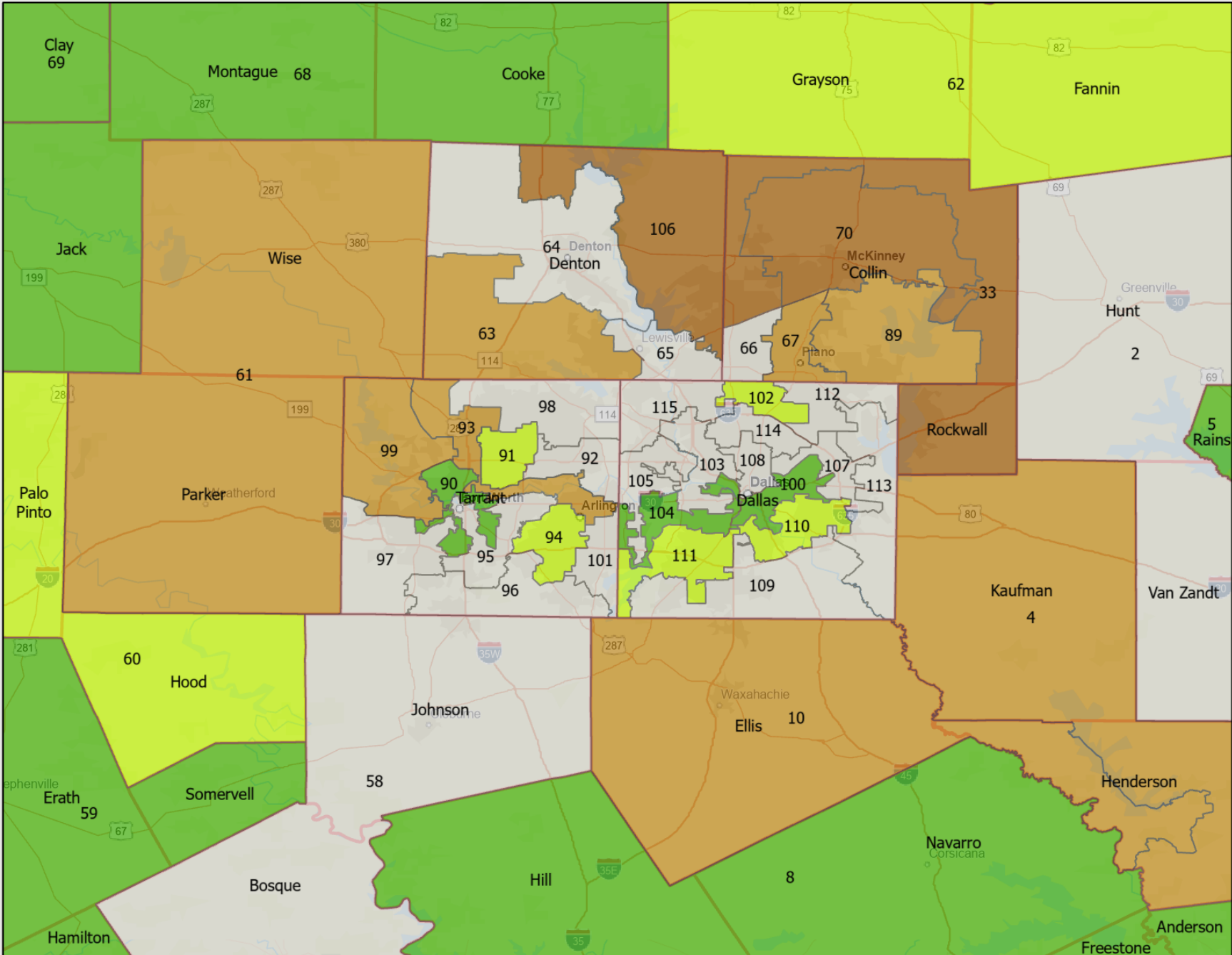
- 146,234 - 175,000
- 175,001 - 184,588
- 184,589 - 204,018 - Ideal size +/- 5%
- 204,019 - 250,000
- 250,001 - 297,864
- County

House district populations were constructed by intersecting 2020 census blocks with current house district boundaries. Population of census blocks split by house district boundaries were divided and distributed evenly between districts splitting a block. The result is that the true census population of each district may vary slightly from that estimated using this method.

Source: 2020 U.S. Census, PL 94-171 (Redistricting) File.



2020 Census Population for Current Texas House Districts, Dallas – Fort Worth Area



Total Population 2020

- 146,234 - 175,000
- 175,001 - 184,588
- 184,589 - 204,018 - Ideal size +/- 5%
- 204,019 - 250,000
- 250,001 - 297,864
- County

House district populations were constructed by intersecting 2020 census blocks with current house district boundaries. Population of census blocks split by house district boundaries were divided and distributed evenly between districts splitting a block. The result is that the true census population of each district may vary slightly from that estimated using this method.

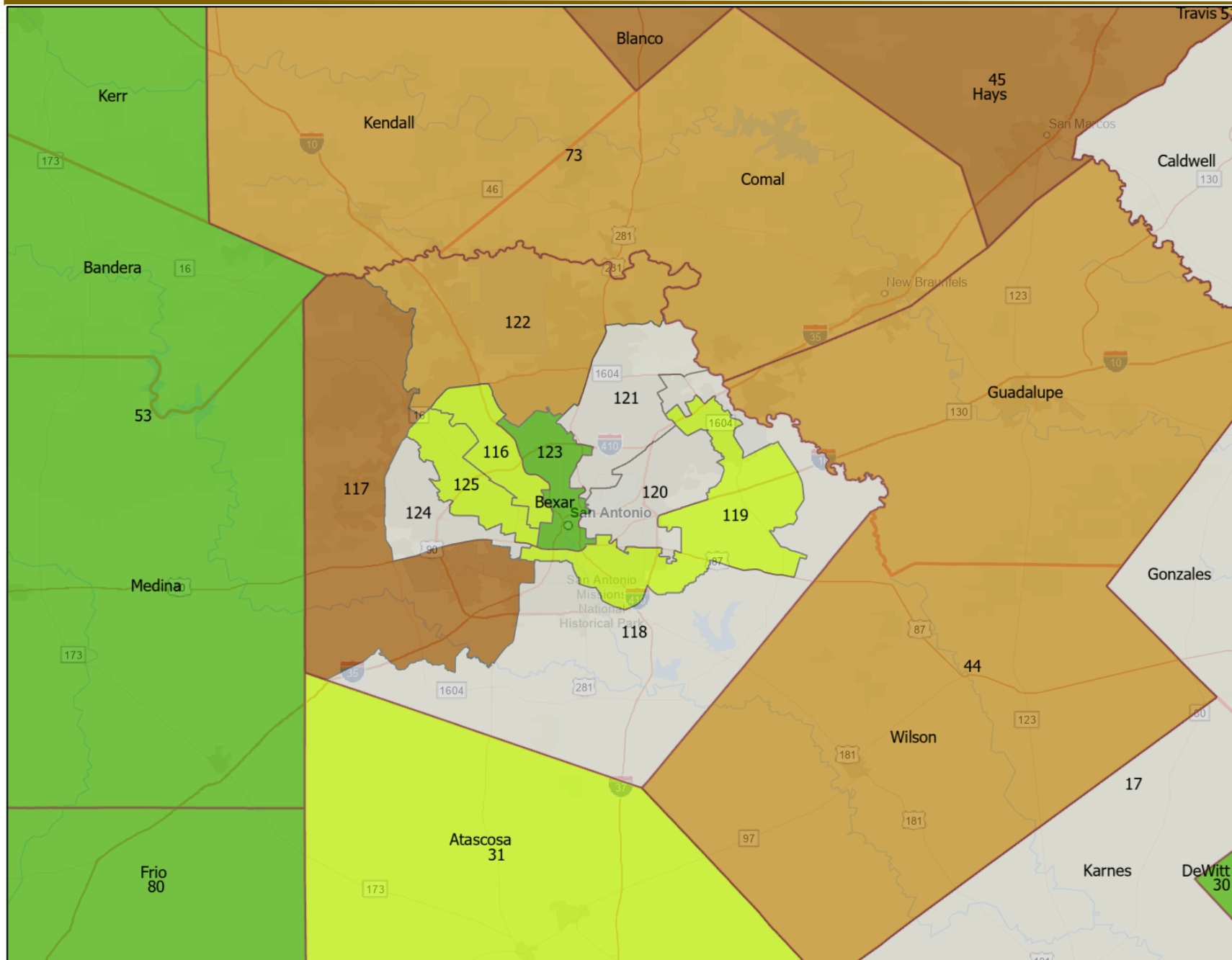
Source: 2020 U.S. Census, PL 94-171 (Redistricting) File.



House district populations were constructed by intersecting 2020 census blocks with current house district boundaries. Population of census blocks split by house district boundaries were divided and distributed evenly between districts splitting a block. The result is that the true census population of each district may vary slightly from that estimated using this method.



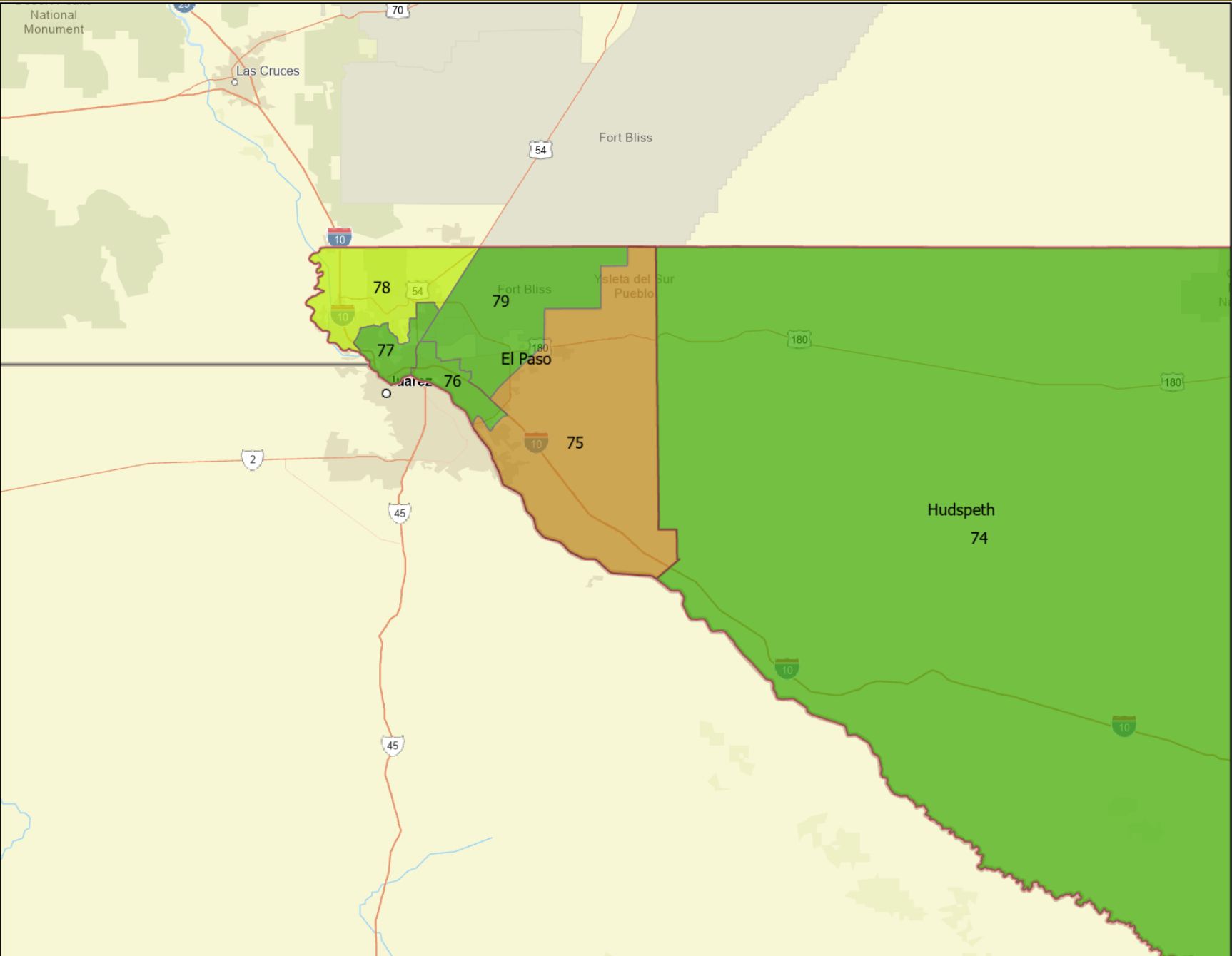
2020 Census Population for Current Texas House Districts, San Antonio Area



House district populations were constructed by intersecting 2020 census blocks with current house district boundaries. Population of census blocks split by house district boundaries were divided and distributed evenly between districts splitting a block. The result is that the true census population of each district may vary slightly from that estimated using this method.



2020 Census Population for Current Texas House Districts, El Paso Area

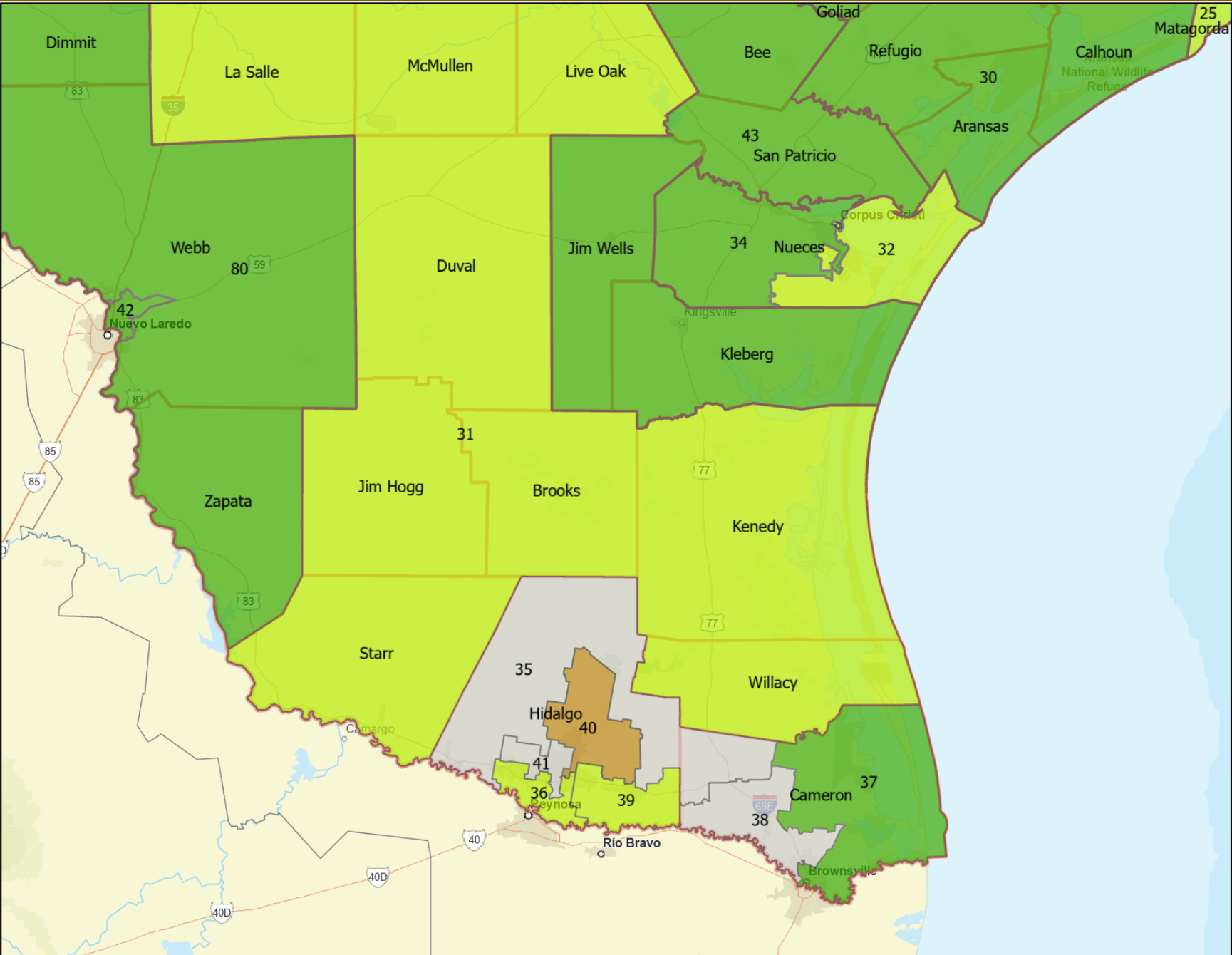


Total Population 2020	
	146,234 - 175,000
	175,001 - 184,588
	184,589 - 204,018 - Ideal size +/- 5%
	204,019 - 250,000
	250,001 - 297,864
	County

House district populations were constructed by intersecting 2020 census blocks with current house district boundaries. Population of census blocks split by house district boundaries were divided and distributed evenly between districts splitting a block. The result is that the true census population of each district may vary slightly from that estimated using this method.



2020 Census Population for Current Texas House Districts, Edinburg Area



Total Population 2020

146,234 - 175,000
175,001 - 184,588
184,589 - 204,018 - Ideal size +/- 5%
204,019 - 250,000
250,001 - 297,864
County

House district populations were constructed by intersecting 2020 census blocks with current house district boundaries. Population of census blocks split by house district boundaries were divided and distributed evenly between districts splitting a block. The result is that the true census population of each district may vary slightly from that estimated using this method.

Source: 2020 U.S. Census, PL 94-171 (Redistricting) File.



<https://demographics.texas.gov/>

<https://demographics.texas.gov/Data/Decennial/2020/#redistricting-tile>

P.L. 94-171 Redistricting Data Summary

Public Law (P.L.) 94-171, enacted by Congress in December 1975, requires the Census Bureau to provide states the opportunity to identify the small area geography for which they need data in order to conduct legislative redistricting. The law also requires the U.S. Census Bureau to furnish tabulations of population to each state, including for those small areas the states have identified, within one year of Census day.

United States
Census 2020 U.S. Census

Quick Links

- [Legacy Format Summary Files](#)
- [Technical Documentation - State](#)
- [Technical Documentation - National](#)
- [Data Maps \(pdf format\)](#)
- [more...](#)

TEXAS
DEMOGRAPHIC CENTER Tx Demographic Center

Texas Area Data Files

Total Population, Housing Unit, and Group Quarter Data by Area

Select File

Voting Population Data by Area

Select File

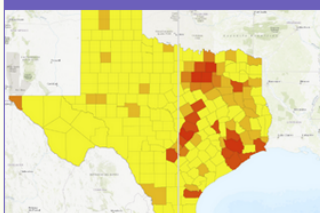
Visualizations

Interactive Data Tool



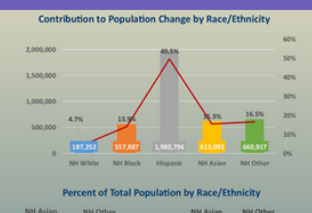
Redistricting Data for Texas
Places, 2000-2020

Interactive Map



Redistricting Data for Texas,
2010-2020 Swipe Maps

Infographic



Who Contributed to Texas'
Population Growth?
2010-2020

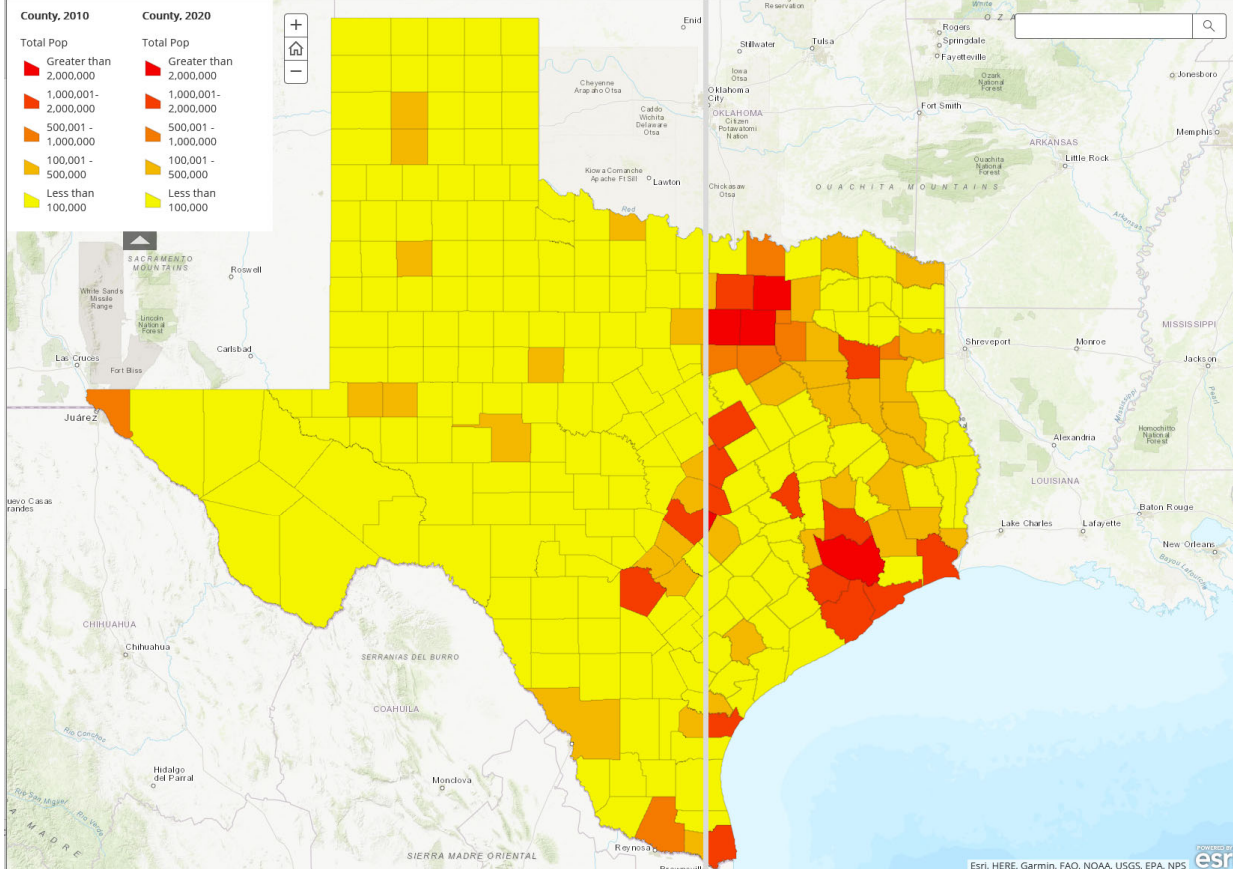
Redistricting Data for Texas, 2010-2020

Source: U.S. Census Bureau, Decennial Census P.L. 94-171 Redistricting Data.
Note: Swipe from left to right to highlight changes in population from 2010-2020.
Zoom in to see county, tract, block group and block level data. Click on the map to learn more.

Total Population Percent Hispanic Percent NH Black Percent NH White Percent NH Asian Percent NH Other Race

Total Population, 2010-2020

Texas Counties, Census Tracts, Block Groups and Blocks



Esri, HERE, Garmin, FAO, NOAA, USGS, EPA, NPS



United States[®]
Census
Bureau

Q

Search

BROWSE BY TOPIC

EXPLORE DATA

LIBRARY

SURVEYS/ PROGRAMS

INFORMATION FOR...

FIND A CODE

ABOUT US

2020 Census Redistricting Data Now Available.

// Census.gov > Our Surveys & Programs > Decennial Census of Population and Housing > About the Decennial Census > Redistricting Data Program

DECENNIAL CENSUS OF
POPULATION AND
HOUSING

Why a Census?

History of the Census

Census in the
Constitution

Decennial and the
American Community
Survey (ACS)

Coverage Measurement

Local Update of Census
Addresses Operation
(LUCA)

New Construction
Program

Participant Statistical
Areas Program (PSAP)

Redistricting

Voting Rights

Related Sites

< Back to About the
Decennial Census

f

Redistricting Data Program

REDISTRICTING & VOTING RIGHTS DATA OFFICE (RDO@CENSUS.GOV OR 301-763-4039)

tw

in

Data

May 05, 2017 | CRVRDO

Redistricting Data Program Congressional Districts

Guidance and access to information about congressional districts and congressional district products.

May 08, 2017 | CRVRDO

Redistricting Data Program State Legislative Districts

Guidance and access to information about state legislative districts and state legislative district products.

August 12, 2021 | CRVRDO

Decennial Census P.L. 94-171 Redistricting Data Summary Files

Includes the official data, documentation, and support materials to assist in accessing P.L. 94-171 Redistricting Data.

March 16, 2021 | Redistricting & Voting Rights Data Office (Rdo@census.gov Or 301-763-4039)

Redistricting Data Program Management

Guidance about and for participation in the Redistricting Data Program for the current and past Decennial Censuses.

EXPAND ALL | COLLAPSE ALL

▼ About the 2020 Redistricting Data Product

▼ America Counts Stories

Related Information

[Redistricting Data Datasets](#)

[Redistricting Data Mapping Files](#)

You May Be Interested In

MOST POPULAR

2020 Census

https://www.census.gov/programs-surveys/decennial-census/about/rdo.html

22



2020 Census Detailed Operational Plan for: 24. Count Question Resolution Operation (CQR)

MARCH 31, 2020

VERSION: 1.0

PREPARED BY: DECENNIAL CENSUS MANAGEMENT DIVISION

Operation Purpose

The purpose of the 2020 Census CQR is to provide a mechanism for governmental units (GUs) to request a review of their official 2020 Census results. The 2020 Census CQR is the final operation by which updates to the 2020 Census data can be made. Tribal chairpersons and the highest elected officials (or their representative) from state and local governments in the United States and Puerto Rico can submit a CQR case to request review of the official 2020 Census counts of population and housing, and to correct boundary, geocoding, and certain coverage issues.



[Download Count Question Resolution Operation \(CQR\) \[PDF - 1.6 MB\]](#)

<https://www.census.gov/programs-surveys/decennial-census/2020-census/planning-management/planning-docs/CQR-detailed-op-plan.html>

Information on 2010 CQR process:

<https://www.census.gov/programs-surveys/decennial-census/decade/2010/program-management/cqr.html>



Lloyd Potter, Ph.D.



(210) 458-6530



TDC@UTSA.edu



Demographics.Texas.gov



@TexasDemography